



Property summary

0

Garages

4

Bedrooms

3

Bathrooms

1

Half baths

3

Floors

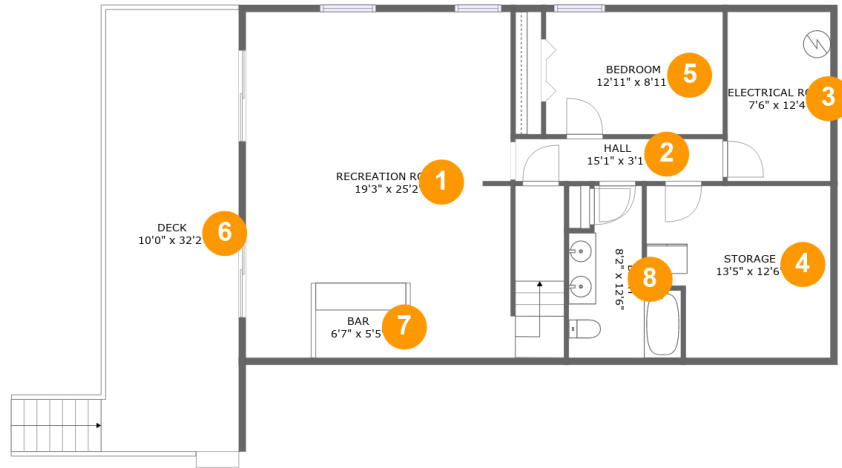
2,925

Gross living area sqft

4,274

Total sqft

120 Pebble Brook Lane, Moneta, Bedford County, Virginia, United States, 24121



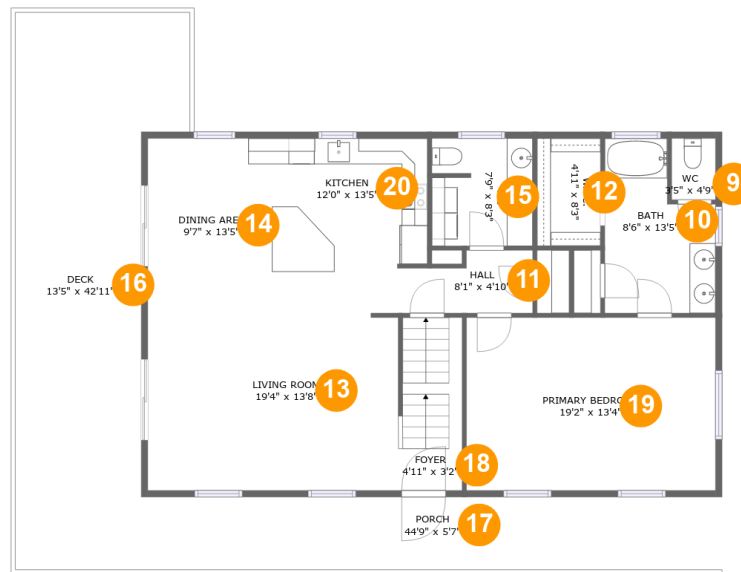
Room dimensions

Floor 1

Total sqft: 1483 Living area: 875

#		Dimensions	sqft	Counted as living area
1	Recreation Room	19'3" x 25'2"	494 sq. ft	Yes
2	Hall	15'1" x 3'1"	47 sq. ft	Yes
3	Electrical Room	7'6" x 12'4"	93 sq. ft	No
4	Storage	13'5" x 12'6"	153 sq. ft	No
5	Bedroom	12'11" x 8'11"	115 sq. ft	Yes
6	Deck	10'0" x 32'2"	338 sq. ft	No
7	Bar	6'7" x 5'5"	38 sq. ft	Yes
8	Bath	8'2" x 12'6"	74 sq. ft	Yes

120 Pebble Brook Lane, Moneta, Bedford County, Virginia, United States, 24121



Room dimensions

Floor 2

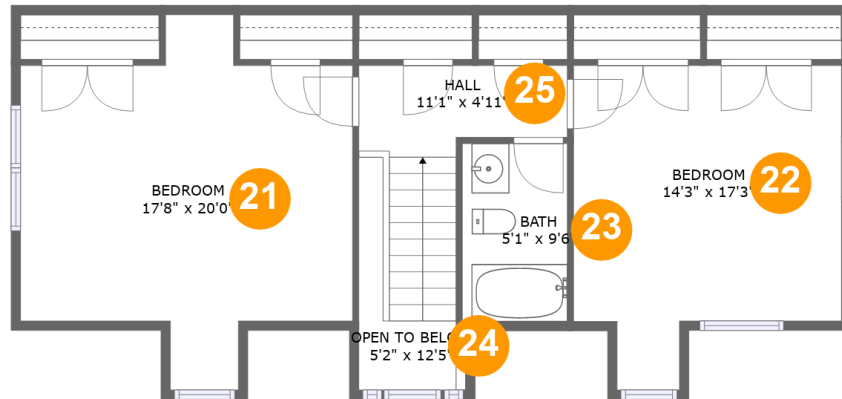
Total sqft: 1959 Living area: 1257

#		Dimensions	sqft	Counted as living area
9	WC	3'5" x 4'9"	16 sq. ft	Yes
10	Bath	8'6" x 13'5"	96 sq. ft	Yes
11	Hall	8'1" x 4'10"	35 sq. ft	Yes
12	W.I.C.	4'11" x 8'3"	40 sq. ft	Yes
13	Living Room	19'4" x 13'8"	263 sq. ft	Yes
14	Dining Area	9'7" x 13'5"	129 sq. ft	Yes
15	WC	7'9" x 8'3"	63 sq. ft	Yes
16	Deck	13'5" x 42'11"	451 sq. ft	No
17	Porch	44'9" x 5'7"	251 sq. ft	No
18	Foyer	4'11" x 3'2"	63 sq. ft	Yes
19	Primary Bedroom	19'2" x 13'4"	255 sq. ft	Yes

**120 Pebble Brook Lane, Moneta, Bedford County,
Virginia, United States, 24121**

#		Dimensions	sqft	Counted as living area
20	Kitchen	12'0" x 13'5"	160 sq. ft	Yes

120 Pebble Brook Lane, Moneta, Bedford County,
Virginia, United States, 24121



Room dimensions

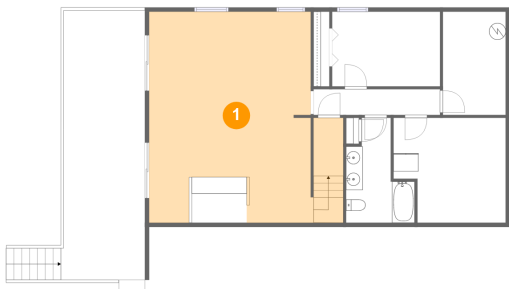
Floor 3

Total sqft: 832 Living area: 793

#		Dimensions	sqft	Counted as living area
21	Bedroom	17'8" x 20'0"	264 sq. ft	Yes
22	Bedroom	14'3" x 17'3"	206 sq. ft	Yes
23	Bath	5'1" x 9'6"	53 sq. ft	Yes
24	Open To Below	5'2" x 12'5"	32 sq. ft	No
25	Hall	11'1" x 4'11"	82 sq. ft	Yes

120 Pebble Brook Lane, Moneta, Bedford County,
Virginia, United States, 24121

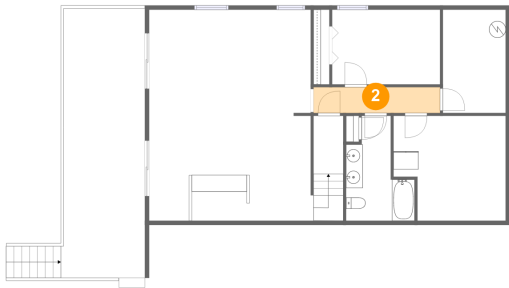
1 Floor 1 - Recreation Room



Dimensions: 19'3" x 25'2"
Area: 494 sq. ft
Counted as living area: Yes

Heated: Yes
Finished: Yes
Enclosed: Yes
Contiguous: Yes
Permitted: Yes
Wet space: No
Addition: No
Conversion: No

2 Floor 1 - Hall

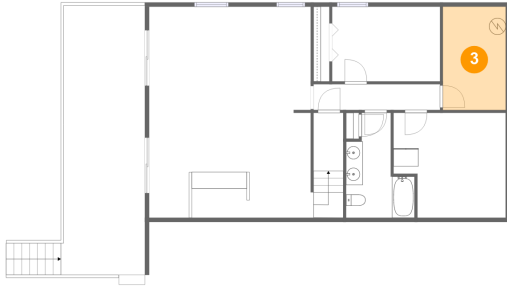


Dimensions: 15'1" x 3'1"
Area: 47 sq. ft
Counted as living area: Yes

Heated: Yes
Finished: Yes
Enclosed: Yes
Contiguous: Yes
Permitted: Yes
Wet space: No
Addition: No
Conversion: No

120 Pebble Brook Lane, Moneta, Bedford County,
Virginia, United States, 24121

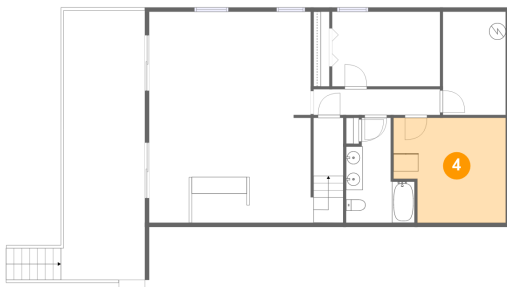
3 Floor 1 - Electrical Room



Dimensions: 7'6" x 12'4"
Area: 93 sq. ft
Counted as living area: No

Heated: No
Finished: No
Enclosed: Yes
Contiguous: Yes
Permitted: Yes
Wet space: No
Addition: No
Conversion: No

4 Floor 1 - Storage



Dimensions: 13'5" x 12'6"
Area: 153 sq. ft
Counted as living area: No

Heated: No
Finished: No
Enclosed: No
Contiguous: Yes
Permitted: Yes
Wet space: No
Addition: No
Conversion: No

5 Floor 1 - Bedroom

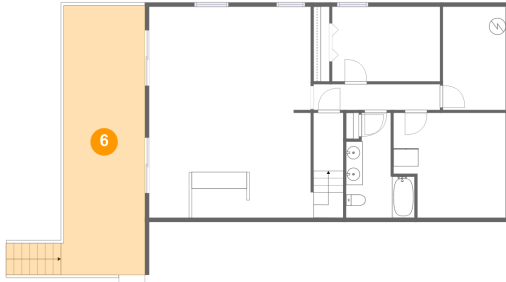


Dimensions: 12'11" x 8'11"
Area: 115 sq. ft
Counted as living area: Yes

Heated: Yes
Finished: Yes
Enclosed: Yes
Contiguous: Yes
Permitted: Yes
Wet space: No
Addition: No
Conversion: No

120 Pebble Brook Lane, Moneta, Bedford County,
Virginia, United States, 24121

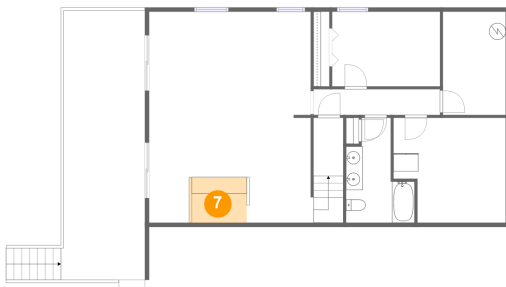
6 Floor 1 - Deck



Dimensions: 10'0" x 32'2"
Area: 338 sq. ft
Counted as living area: No

Heated: No
Finished: Yes
Enclosed: No
Contiguous: Yes
Permitted: Yes
Wet space: No
Addition: No
Conversion: No

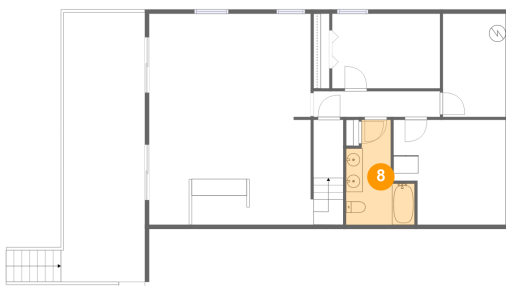
7 Floor 1 - Bar



Dimensions: 6'7" x 5'5"
Area: 38 sq. ft
Counted as living area: Yes

Heated: Yes
Finished: Yes
Enclosed: Yes
Contiguous: Yes
Permitted: Yes
Wet space: No
Addition: No
Conversion: No

8 Floor 1 - Bath

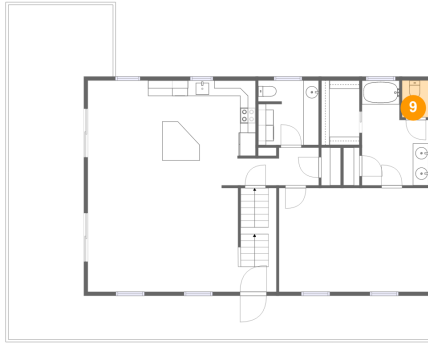


Dimensions: 8'2" x 12'6"
Area: 74 sq. ft
Counted as living area: Yes

Heated: Yes
Finished: Yes
Enclosed: Yes
Contiguous: Yes
Permitted: Yes
Wet space: Yes
Addition: No
Conversion: No

120 Pebble Brook Lane, Moneta, Bedford County,
Virginia, United States, 24121

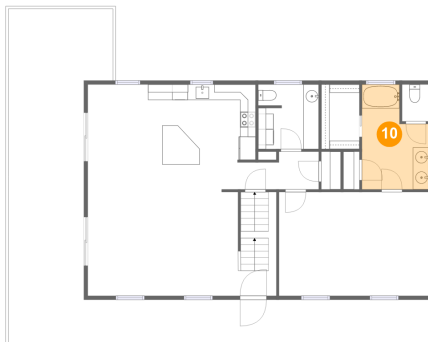
9 Floor 2 - WC



Dimensions: 3'5" x 4'9"
Area: 16 sq. ft
Counted as living area: Yes

Heated: Yes
Finished: Yes
Enclosed: Yes
Contiguous: Yes
Permitted: Yes
Wet space: Yes
Addition: No
Conversion: No

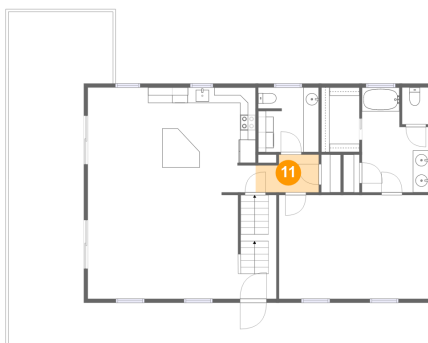
10 Floor 2 - Bath



Dimensions: 8'6" x 13'5"
Area: 96 sq. ft
Counted as living area: Yes

Heated: Yes
Finished: Yes
Enclosed: Yes
Contiguous: Yes
Permitted: Yes
Wet space: Yes
Addition: No
Conversion: No

11 Floor 2 - Hall

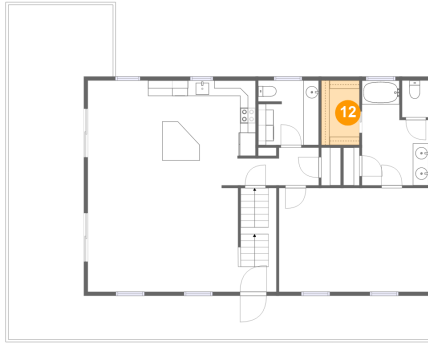


Dimensions: 8'1" x 4'10"
Area: 35 sq. ft
Counted as living area: Yes

Heated: Yes
Finished: Yes
Enclosed: Yes
Contiguous: Yes
Permitted: Yes
Wet space: No
Addition: No
Conversion: No

120 Pebble Brook Lane, Moneta, Bedford County,
Virginia, United States, 24121

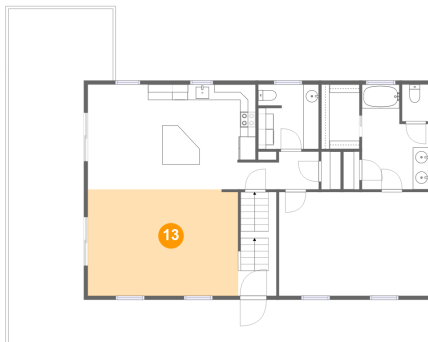
12 Floor 2 - W.I.C.



Dimensions: 4'11" x 8'3"
Area: 40 sq. ft
Counted as living area: Yes

Heated: Yes
Finished: Yes
Enclosed: Yes
Contiguous: Yes
Permitted: Yes
Wet space: No
Addition: No
Conversion: No

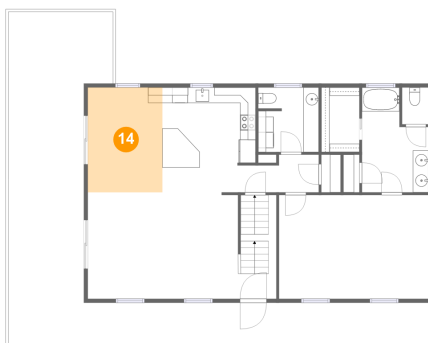
13 Floor 2 - Living Room



Dimensions: 19'4" x 13'8"
Area: 263 sq. ft
Counted as living area: Yes

Heated: Yes
Finished: Yes
Enclosed: Yes
Contiguous: Yes
Permitted: Yes
Wet space: No
Addition: No
Conversion: No

14 Floor 2 - Dining Area

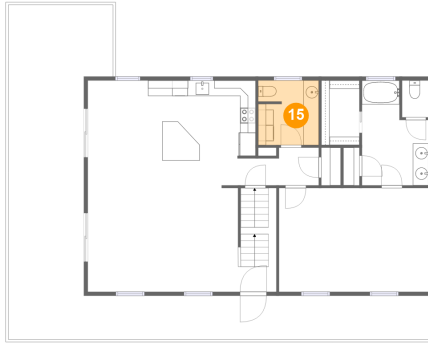


Dimensions: 9'7" x 13'5"
Area: 129 sq. ft
Counted as living area: Yes

Heated: Yes
Finished: Yes
Enclosed: Yes
Contiguous: Yes
Permitted: Yes
Wet space: No
Addition: No
Conversion: No

120 Pebble Brook Lane, Moneta, Bedford County,
Virginia, United States, 24121

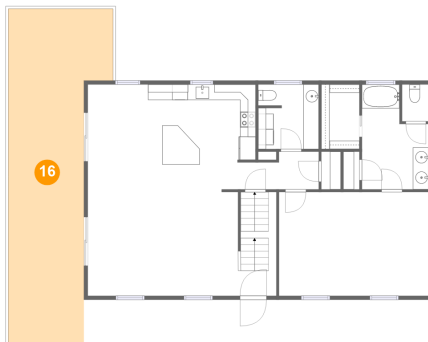
15 Floor 2 - WC



Dimensions: 7'9" x 8'3"
Area: 63 sq. ft
Counted as living area: Yes

Heated: Yes
Finished: Yes
Enclosed: Yes
Contiguous: Yes
Permitted: Yes
Wet space: Yes
Addition: No
Conversion: No

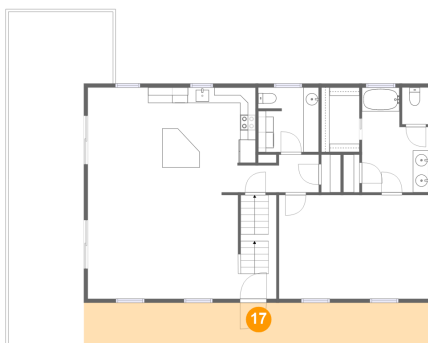
16 Floor 2 - Deck



Dimensions: 13'5" x 42'11"
Area: 451 sq. ft
Counted as living area: No

Heated: No
Finished: Yes
Enclosed: No
Contiguous: Yes
Permitted: Yes
Wet space: No
Addition: No
Conversion: No

17 Floor 2 - Porch

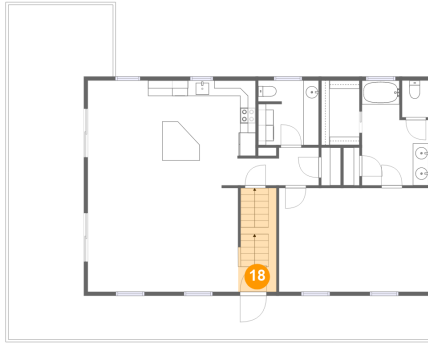


Dimensions: 44'9" x 5'7"
Area: 251 sq. ft
Counted as living area: No

Heated: No
Finished: Yes
Enclosed: No
Contiguous: Yes
Permitted: Yes
Wet space: No
Addition: No
Conversion: No

120 Pebble Brook Lane, Moneta, Bedford County,
Virginia, United States, 24121

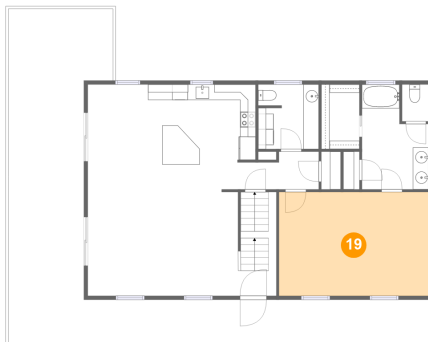
18 Floor 2 - Foyer



Dimensions: 4'11" x 3'2"
Area: 63 sq. ft
Counted as living area: Yes

Heated: Yes
Finished: Yes
Enclosed: Yes
Contiguous: Yes
Permitted: Yes
Wet space: No
Addition: No
Conversion: No

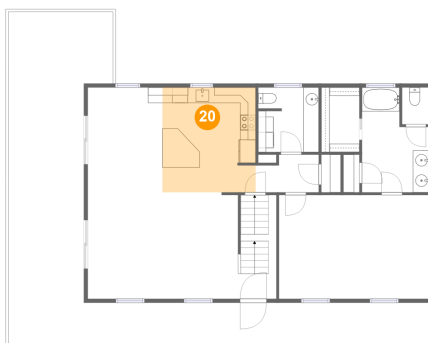
19 Floor 2 - Primary Bedroom



Dimensions: 19'2" x 13'4"
Area: 255 sq. ft
Counted as living area: Yes

Heated: Yes
Finished: Yes
Enclosed: Yes
Contiguous: Yes
Permitted: Yes
Wet space: No
Addition: No
Conversion: No

20 Floor 2 - Kitchen

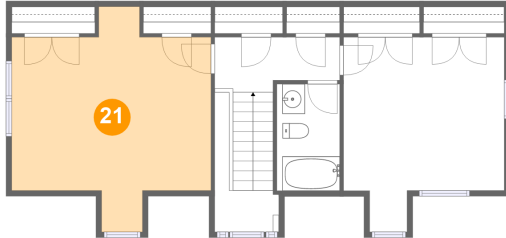


Dimensions: 12'0" x 13'5"
Area: 160 sq. ft
Counted as living area: Yes

Heated: Yes
Finished: Yes
Enclosed: Yes
Contiguous: Yes
Permitted: Yes
Wet space: No
Addition: No
Conversion: No

120 Pebble Brook Lane, Moneta, Bedford County,
Virginia, United States, 24121

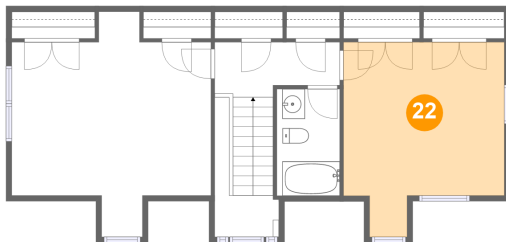
21 Floor 3 - Bedroom



Dimensions: 17'8" x 20'0"
Area: 264 sq. ft
Counted as living area: Yes

Heated: Yes
Finished: Yes
Enclosed: Yes
Contiguous: Yes
Permitted: Yes
Wet space: No
Addition: No
Conversion: No

22 Floor 3 - Bedroom



Dimensions: 14'3" x 17'3"
Area: 206 sq. ft
Counted as living area: Yes

Heated: Yes
Finished: Yes
Enclosed: Yes
Contiguous: Yes
Permitted: Yes
Wet space: No
Addition: No
Conversion: No

23 Floor 3 - Bath

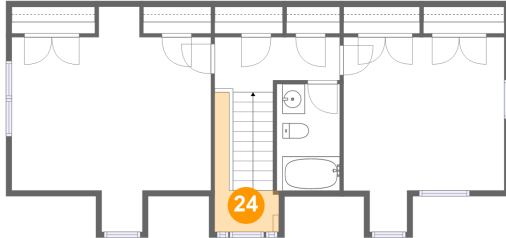


Dimensions: 5'1" x 9'6"
Area: 53 sq. ft
Counted as living area: Yes

Heated: Yes
Finished: Yes
Enclosed: Yes
Contiguous: Yes
Permitted: Yes
Wet space: Yes
Addition: No
Conversion: No

120 Pebble Brook Lane, Moneta, Bedford County,
Virginia, United States, 24121

24 Floor 3 - Open To Below



Dimensions: 5'2" x 12'5"
Area: 32 sq. ft
Counted as living area: No

Heated: No
Finished: No
Enclosed: No
Contiguous: Yes
Permitted: No
Wet space: No
Addition: No
Conversion: No

25 Floor 3 - Hall



Dimensions: 11'1" x 4'11"
Area: 82 sq. ft
Counted as living area: Yes

Heated: Yes
Finished: Yes
Enclosed: Yes
Contiguous: Yes
Permitted: Yes
Wet space: No
Addition: No
Conversion: No