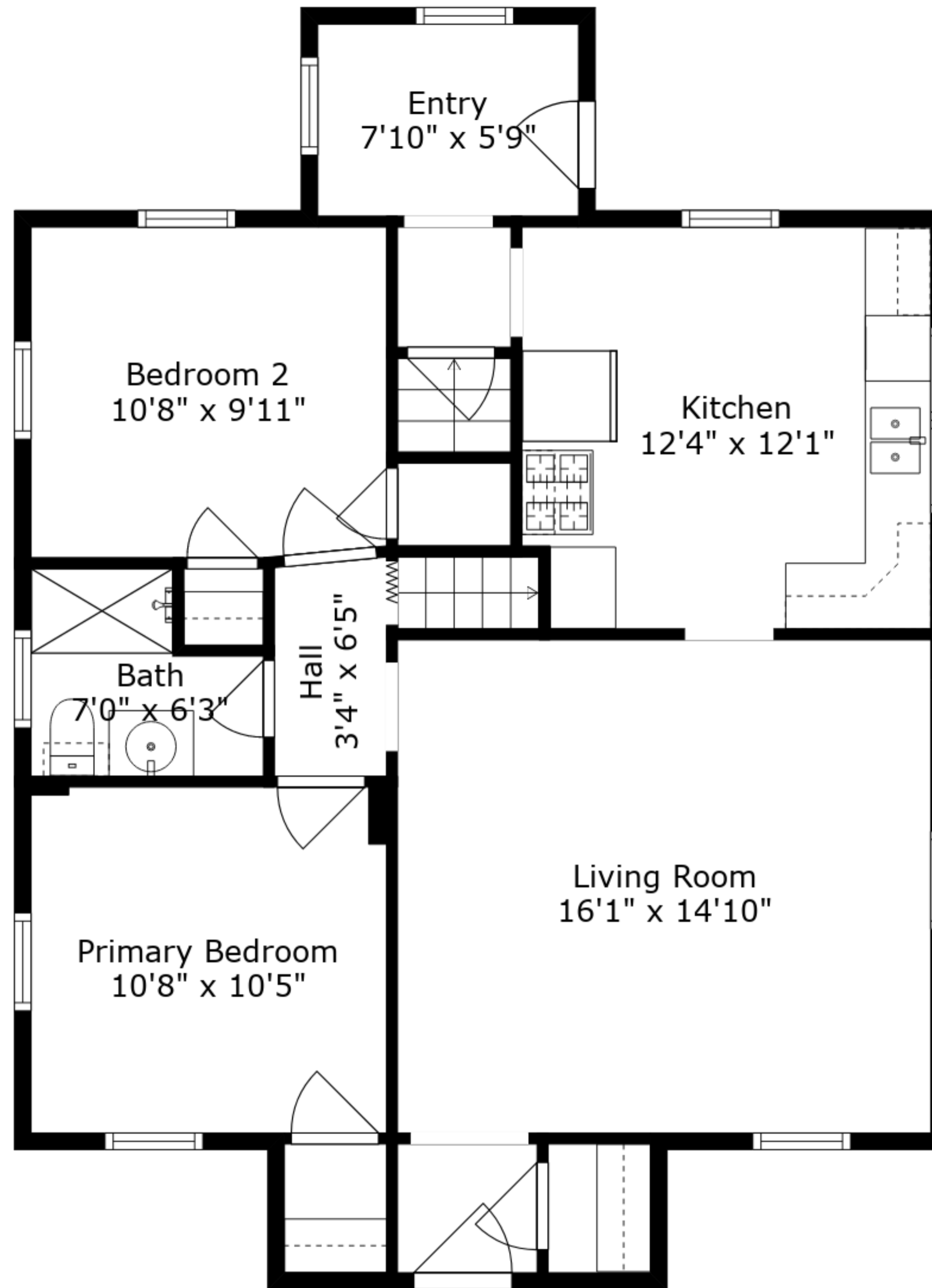


Total GLA: 1231 sq. ft | Total: 2074 sq. ft
Floor 1 - Below grade: (Excluded areas 843 sq. ft)
Main floor: 897 sq. ft
Upper floor: 334 sq. ft

Sizes And Dimensions Are Approximate. Actual May Vary.



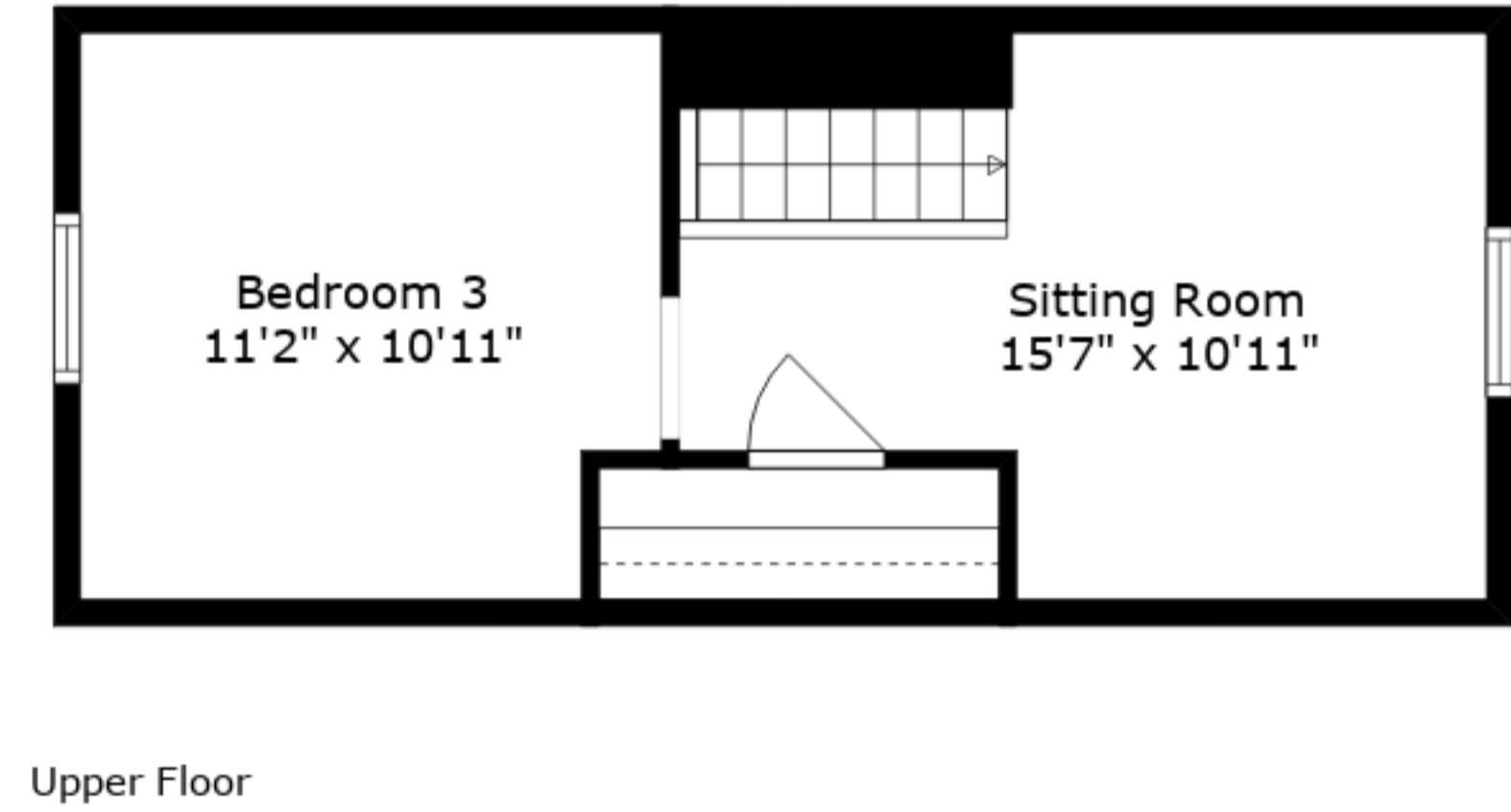
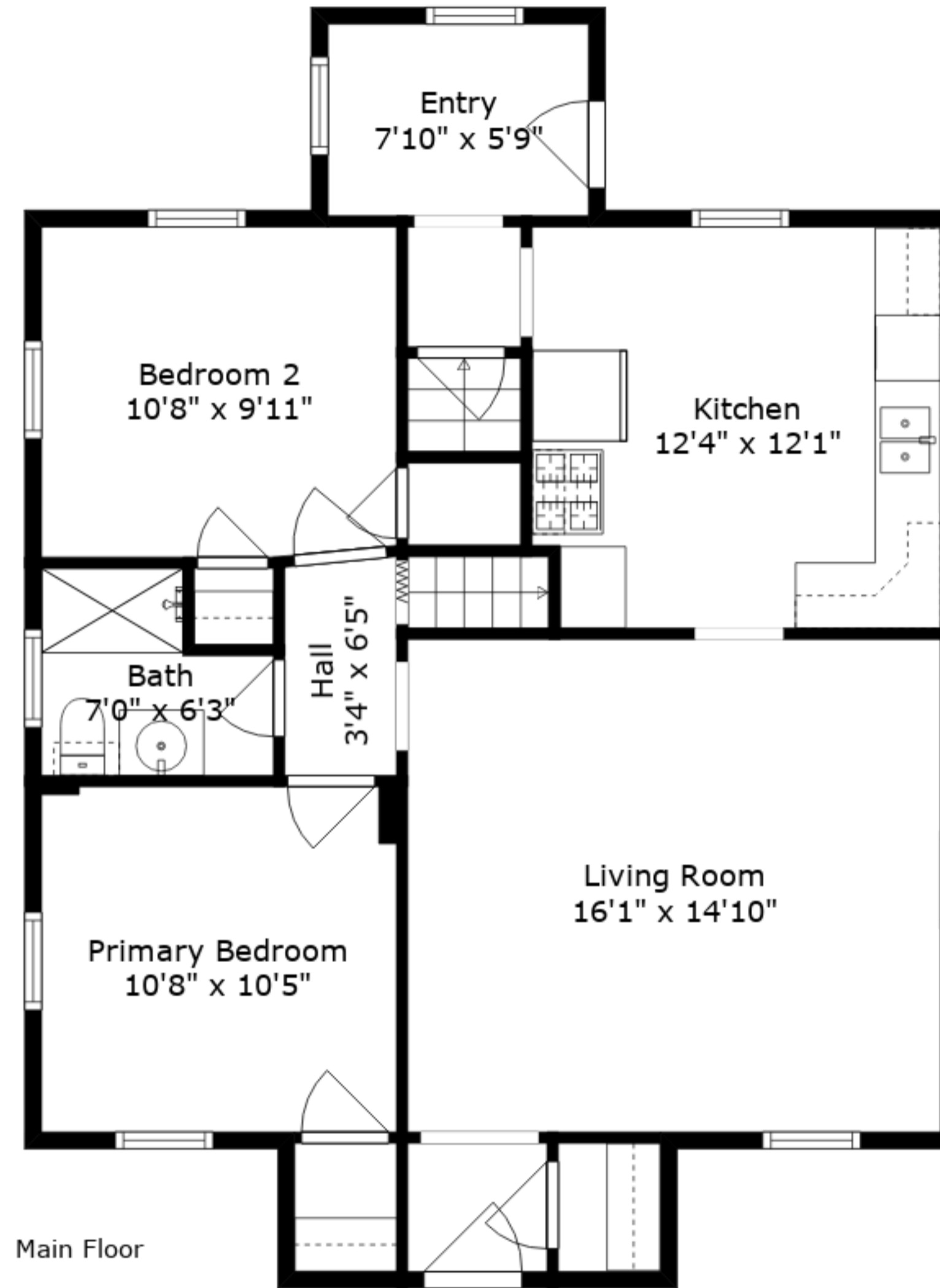
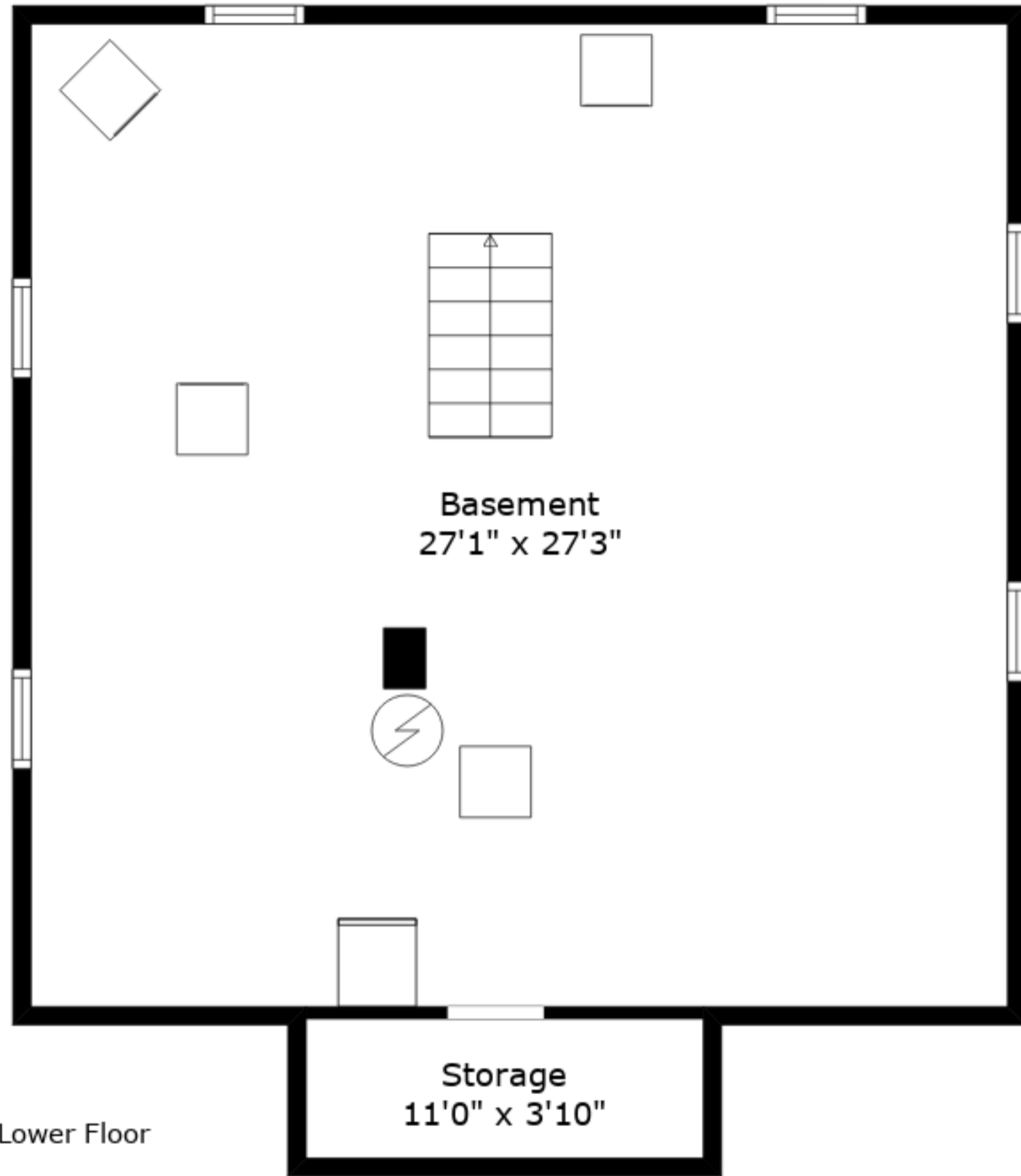
Total GLA: 1231 sq. ft | Total: 2074 sq. ft
 Floor 1 - Below grade: (Excluded areas 843 sq. ft)
 Main floor: 897 sq. ft
 Upper floor: 334 sq. ft

Sizes And Dimensions Are Approximate. Actual May Vary.

Bedroom 3
11'2" x 10'11"

The floor plan shows a central hallway with a door opening into Bedroom 3 on the left and a door opening into the Sitting Room on the right. The Sitting Room features a fireplace on the bottom wall and a window with a grid pattern on the top wall. A dashed line indicates a wall or partition in the lower part of the Sitting Room.

Sitting Room
15'7" x 10'11"



Total GLA: 1231 sq. ft | Total: 2074 sq. ft
 Floor 1 - Below grade: (Excluded areas 843 sq. ft)
 Main floor: 897 sq. ft
 Upper floor: 334 sq. ft

Sizes And Dimensions Are Approximate. Actual May Vary.