

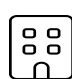
Home report

14115 Northwest 68th Street, Parkville, Platte County, Missouri,  
United States, 64152




**Total Area: 2499 sq. ft**  
Floor 1: 284 sq. ft, Floor 2: 635 sq. ft, Floor 3: 324 sq. ft, Floor 4: 1256 sq. ft  
Excluded: Garage 575 sq. ft, Utility 44 sq. ft, Opentobelow 297 sq. ft, Walls: 239 sq. ft

Property summary

 **4** Floors

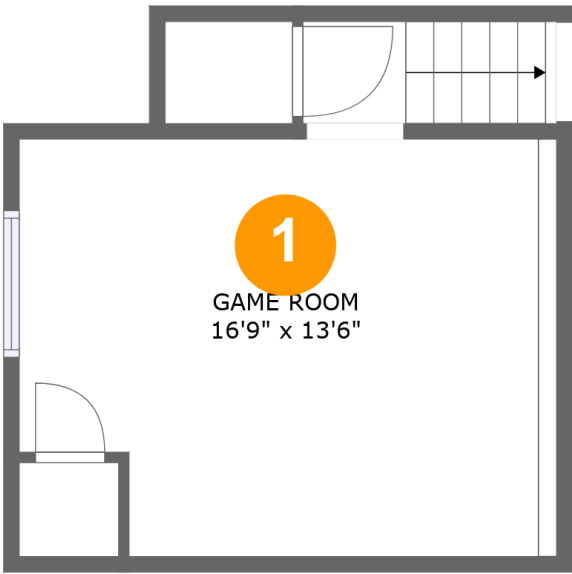
 **4** Bedrooms

 **3** Bathrooms

 **1** Garages

Home report

14115 Northwest 68th Street, Parkville, Platte County, Missouri,  
United States, 64152



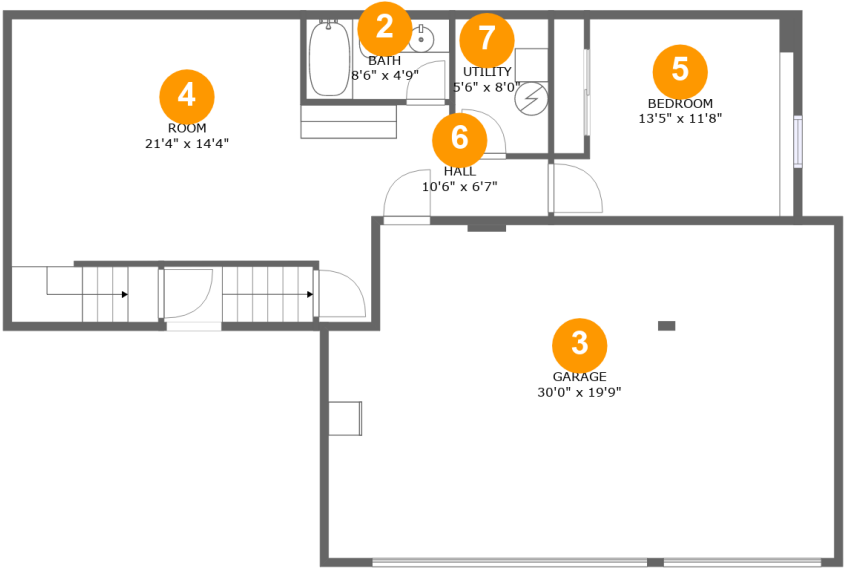
Room dimensions

Floor 1 Total:284sqft   Excluded: 0sqft

#		Max Dimensions	sqft	Included
1	Game Room	16'9" x 13'6"	223 sq. ft	Yes

Home report

14115 Northwest 68th Street, Parkville, Platte County, Missouri,  
United States, 64152



Room dimensions

Floor 2 Total:635sqft Excluded: 619sqft

#		Max Dimensions	sqft	Included
2	Bath	8'6" x 4'9"	41 sq. ft	Yes
3	Garage	30'0" x 19'9"	575 sq. ft	No
4	Room	21'4" x 14'4"	327 sq. ft	Yes
5	Bedroom	13'5" x 11'8"	149 sq. ft	Yes
6	Hall	10'6" x 6'7"	51 sq. ft	Yes
7	Utility	5'6" x 8'0"	44 sq. ft	No

Home report

14115 Northwest 68th Street, Parkville, Platte County, Missouri,  
United States, 64152



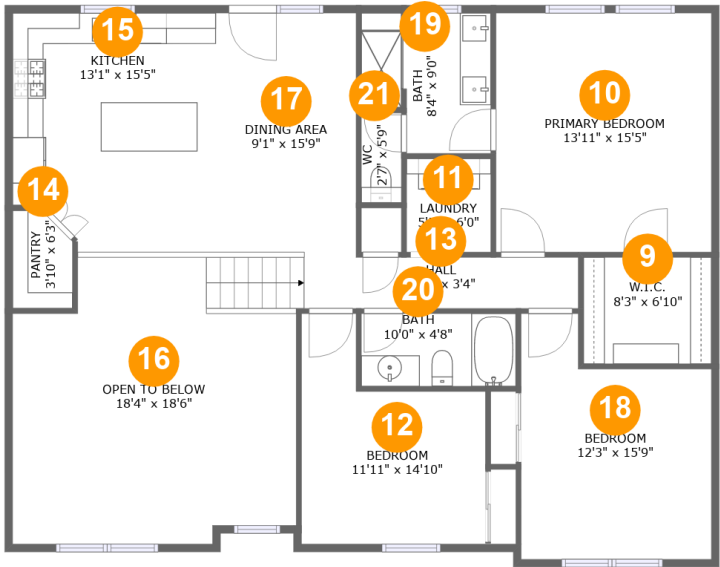
Room dimensions

Floor 3 Total:324sqft   Excluded: 0sqft

#		Max Dimensions	sqft	Included
8	Living Room	18'3" x 14'10"	324 sq. ft	Yes

Home report

14115 Northwest 68th Street, Parkville, Platte County, Missouri,  
United States, 64152



Room dimensions

Floor 4 Total:1257sqft    Excluded: 297sqft

#		Max Dimensions	sqft	Included
9	W.I.C.	8'3" x 6'10"	57 sq. ft	Yes
10	Primary Bedroom	13'11" x 15'5"	214 sq. ft	Yes
11	Laundry	5'5" x 6'0"	33 sq. ft	Yes
12	Bedroom	11'11" x 14'10"	143 sq. ft	Yes
13	Hall	17'8" x 3'4"	79 sq. ft	Yes
14	Pantry	3'10" x 6'3"	22 sq. ft	Yes
15	Kitchen	13'1" x 15'5"	197 sq. ft	Yes
16	Open To Below	18'4" x 18'6"	296 sq. ft	No
17	Dining Area	9'1" x 15'9"	143 sq. ft	Yes
18	Bedroom	12'3" x 15'9"	164 sq. ft	Yes
19	Bath	8'4" x 9'0"	66 sq. ft	Yes

Home report

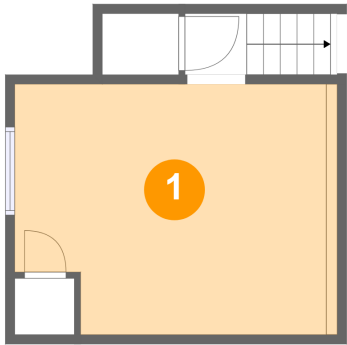
14115 Northwest 68th Street, Parkville, Platte County, Missouri,  
United States, 64152

#		Max Dimensions	sqft	Included
20	Bath	10'0" x 4'8"	47 sq. ft	Yes
21	WC	2'7" x 5'9"	15 sq. ft	Yes

Home report

14115 Northwest 68th Street, Parkville, Platte County, Missouri,  
United States, 64152

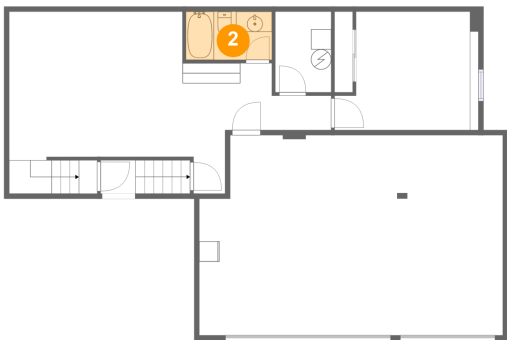
1 Floor 1 - Game Room



Max Dimensions: 16'9" x 13'6"  
Calculated Area: 223 sq. ft  
Included: Yes

Heated: Yes  
Finished: Yes  
Enclosed: Yes  
Contiguous: Yes  
Permitted: Yes  
Wet space: No  
Addition: No  
Conversion: No

2 Floor 2 - Bath

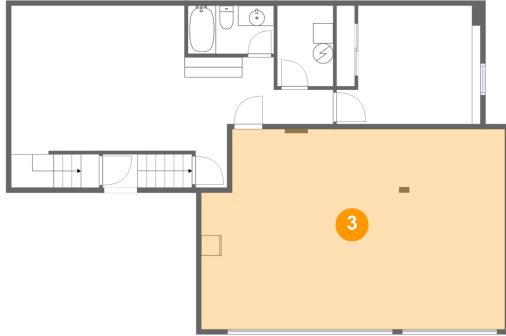


Max Dimensions: 8'6" x 4'9"  
Calculated Area: 41 sq. ft  
Included: Yes

Heated: Yes  
Finished: Yes  
Enclosed: Yes  
Contiguous: Yes  
Permitted: Yes  
Wet space: Yes  
Addition: No  
Conversion: No

14115 Northwest 68th Street, Parkville, Platte County, Missouri,  
United States, 64152

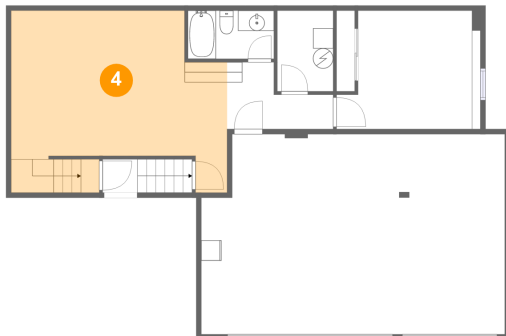
### 3 Floor 2 - Garage



Max Dimensions: 30'0" x 19'9"  
Calculated Area: 575 sq. ft  
Included: No

Heated: No  
Finished: No  
Enclosed: Yes  
Contiguous: Yes  
Permitted: Yes  
Wet space: No  
Addition: No  
Conversion: No

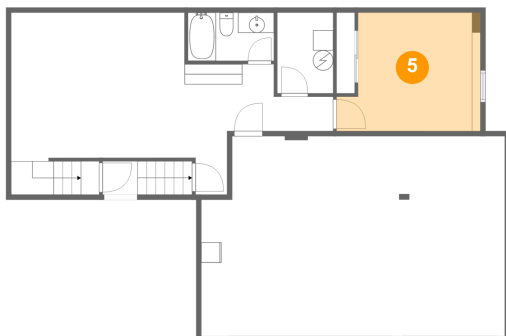
### 4 Floor 2 - Room



Max Dimensions: 21'4" x 14'4"  
Calculated Area: 327 sq. ft  
Included: Yes

Heated: Yes  
Finished: Yes  
Enclosed: Yes  
Contiguous: Yes  
Permitted: Yes  
Wet space: No  
Addition: No  
Conversion: No

### 5 Floor 2 - Bedroom

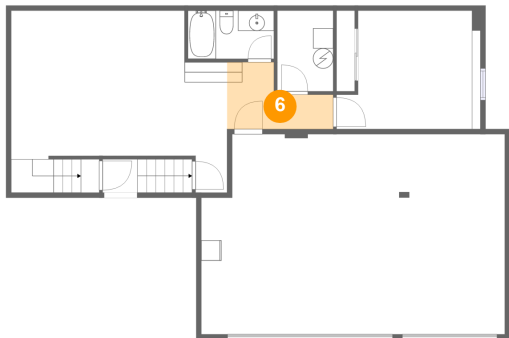


Max Dimensions: 13'5" x 11'8"  
Calculated Area: 149 sq. ft  
Included: Yes

Heated: Yes  
Finished: Yes  
Enclosed: Yes  
Contiguous: Yes  
Permitted: Yes  
Wet space: No  
Addition: No  
Conversion: No



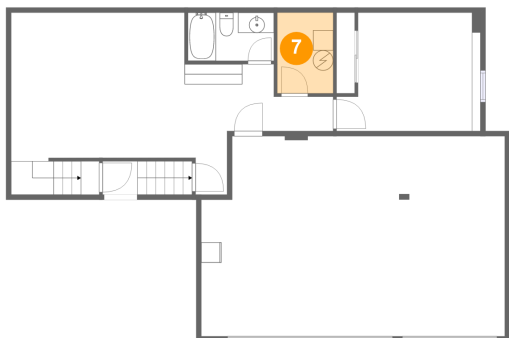
6 Floor 2 - Hall



Max Dimensions: 10'6" x 6'7"  
Calculated Area: 51 sq. ft  
Included: Yes

Heated: Yes  
Finished: Yes  
Enclosed: Yes  
Contiguous: Yes  
Permitted: Yes  
Wet space: No  
Addition: No  
Conversion: No

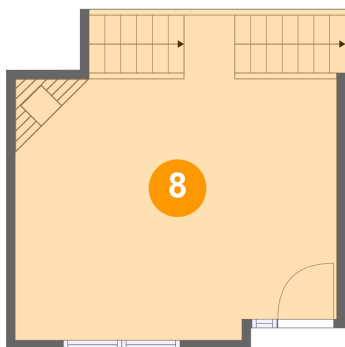
7 Floor 2 - Utility



Max Dimensions: 5'6" x 8'0"  
Calculated Area: 44 sq. ft  
Included: No

Heated: Yes  
Finished: No  
Enclosed: Yes  
Contiguous: Yes  
Permitted: Yes  
Wet space: No  
Addition: No  
Conversion: No

8 Floor 3 - Living Room



Max Dimensions: 18'3" x 14'10"  
Calculated Area: 324 sq. ft  
Included: Yes

Heated: Yes  
Finished: Yes  
Enclosed: Yes  
Contiguous: Yes  
Permitted: Yes  
Wet space: No  
Addition: No  
Conversion: No

## Home report

14115 Northwest 68th Street, Parkville, Platte County, Missouri,  
United States, 64152

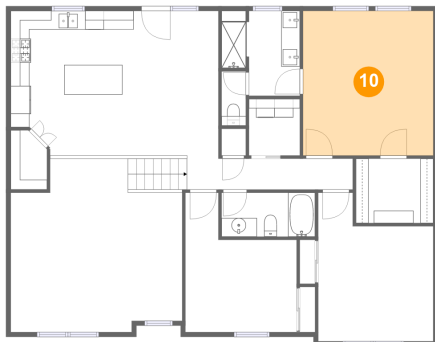
### 9 Floor 4 - W.I.C.



Max Dimensions: 8'3" x 6'10"  
Calculated Area: 57 sq. ft  
Included: Yes

Heated: Yes  
Finished: Yes  
Enclosed: Yes  
Contiguous: Yes  
Permitted: Yes  
Wet space: No  
Addition: No  
Conversion: No

### 10 Floor 4 - Primary Bedroom



Max Dimensions: 13'11" x 15'5"  
Calculated Area: 214 sq. ft  
Included: Yes

Heated: Yes  
Finished: Yes  
Enclosed: Yes  
Contiguous: Yes  
Permitted: Yes  
Wet space: No  
Addition: No  
Conversion: No

### 11 Floor 4 - Laundry

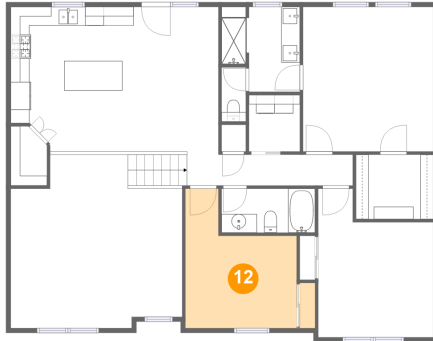


Max Dimensions: 5'5" x 6'0"  
Calculated Area: 33 sq. ft  
Included: Yes

Heated: Yes  
Finished: Yes  
Enclosed: Yes  
Contiguous: Yes  
Permitted: Yes  
Wet space: No  
Addition: No  
Conversion: No

14115 Northwest 68th Street, Parkville, Platte County, Missouri,  
United States, 64152

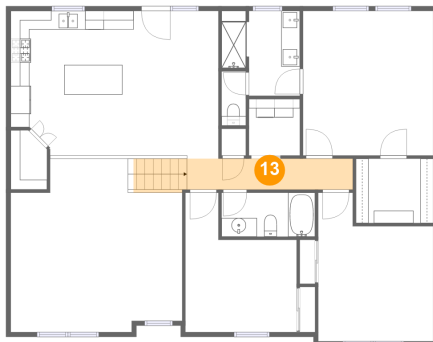
## 12 Floor 4 - Bedroom



Max Dimensions: 11'11" x 14'10"  
Calculated Area: 143 sq. ft  
Included: Yes

Heated: Yes  
Finished: Yes  
Enclosed: Yes  
Contiguous: Yes  
Permitted: Yes  
Wet space: No  
Addition: No  
Conversion: No

## 13 Floor 4 - Hall



Max Dimensions: 17'8" x 3'4"  
Calculated Area: 79 sq. ft  
Included: Yes

Heated: Yes  
Finished: Yes  
Enclosed: Yes  
Contiguous: Yes  
Permitted: Yes  
Wet space: No  
Addition: No  
Conversion: No

## 14 Floor 4 - Pantry

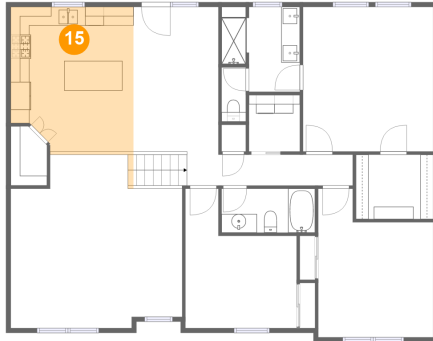


Max Dimensions: 3'10" x 6'3"  
Calculated Area: 22 sq. ft  
Included: Yes

Heated: Yes  
Finished: Yes  
Enclosed: Yes  
Contiguous: Yes  
Permitted: Yes  
Wet space: No  
Addition: No  
Conversion: No

14115 Northwest 68th Street, Parkville, Platte County, Missouri,  
United States, 64152

### 15 Floor 4 - Kitchen



Max Dimensions: 13'1" x 15'5"  
Calculated Area: 197 sq. ft  
Included: Yes

Heated: Yes  
Finished: Yes  
Enclosed: Yes  
Contiguous: Yes  
Permitted: Yes  
Wet space: No  
Addition: No  
Conversion: No

### 16 Floor 4 - Open To Below



Max Dimensions: 18'4" x 18'6"  
Calculated Area: 296 sq. ft  
Included: No

Heated: No  
Finished: No  
Enclosed: No  
Contiguous: Yes  
Permitted: No  
Wet space: No  
Addition: No  
Conversion: No

### 17 Floor 4 - Dining Area

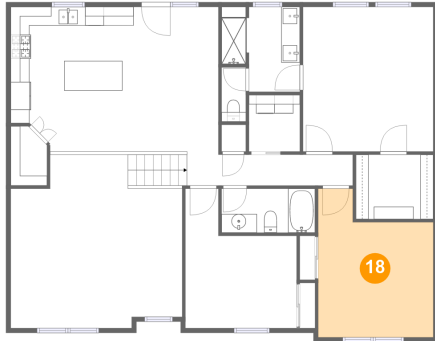


Max Dimensions: 9'1" x 15'9"  
Calculated Area: 143 sq. ft  
Included: Yes

Heated: Yes  
Finished: Yes  
Enclosed: Yes  
Contiguous: Yes  
Permitted: Yes  
Wet space: No  
Addition: No  
Conversion: No

14115 Northwest 68th Street, Parkville, Platte County, Missouri,  
United States, 64152

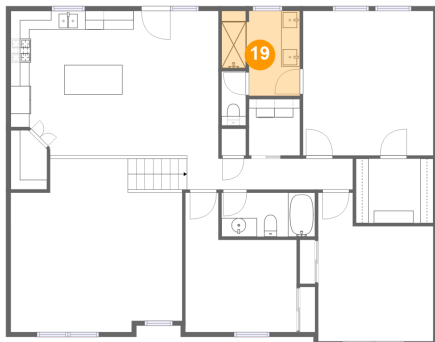
### 18 Floor 4 - Bedroom



Max Dimensions: 12'3" x 15'9"  
Calculated Area: 164 sq. ft  
Included: Yes

Heated: Yes  
Finished: Yes  
Enclosed: Yes  
Contiguous: Yes  
Permitted: Yes  
Wet space: No  
Addition: No  
Conversion: No

### 19 Floor 4 - Bath



Max Dimensions: 8'4" x 9'0"  
Calculated Area: 66 sq. ft  
Included: Yes

Heated: Yes  
Finished: Yes  
Enclosed: Yes  
Contiguous: Yes  
Permitted: Yes  
Wet space: Yes  
Addition: No  
Conversion: No

### 20 Floor 4 - Bath

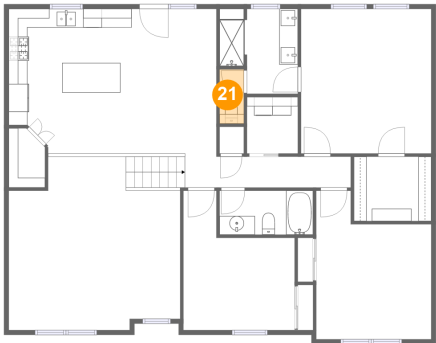


Max Dimensions: 10'0" x 4'8"  
Calculated Area: 47 sq. ft  
Included: Yes

Heated: Yes  
Finished: Yes  
Enclosed: Yes  
Contiguous: Yes  
Permitted: Yes  
Wet space: Yes  
Addition: No  
Conversion: No

14115 Northwest 68th Street, Parkville, Platte County, Missouri,  
United States, 64152

21 Floor 4 - WC



Max Dimensions: 2'7" x 5'9"  
Calculated Area: 15 sq. ft  
Included: Yes

Heated: Yes  
Finished: Yes  
Enclosed: Yes  
Contiguous: Yes  
Permitted: Yes  
Wet space: Yes  
Addition: No  
Conversion: No