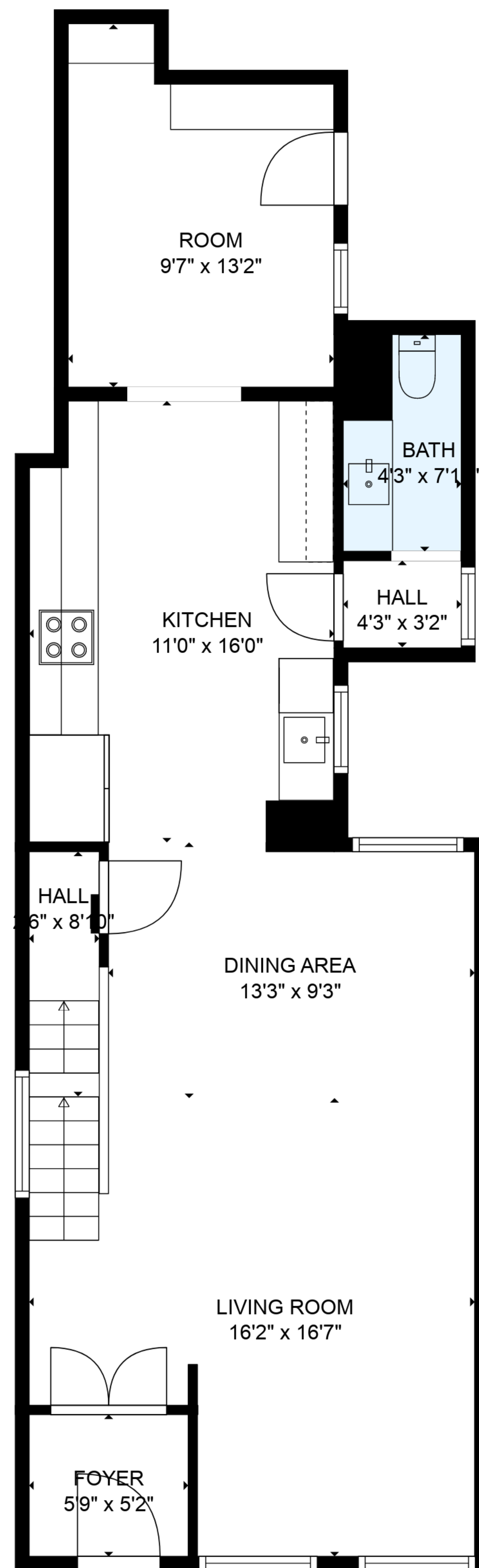


BASEMENT
16'1" x 24'8"

TOTAL: 1799 sq. ft

BELOW GROUND: 0 sq. ft, FLOOR 2: 758 sq. ft, FLOOR 3: 757 sq. ft, FLOOR 4: 284 sq. ft
EXCLUDED AREAS: BASEMENT: 397 sq. ft, LOW CEILING: 123 sq. ft

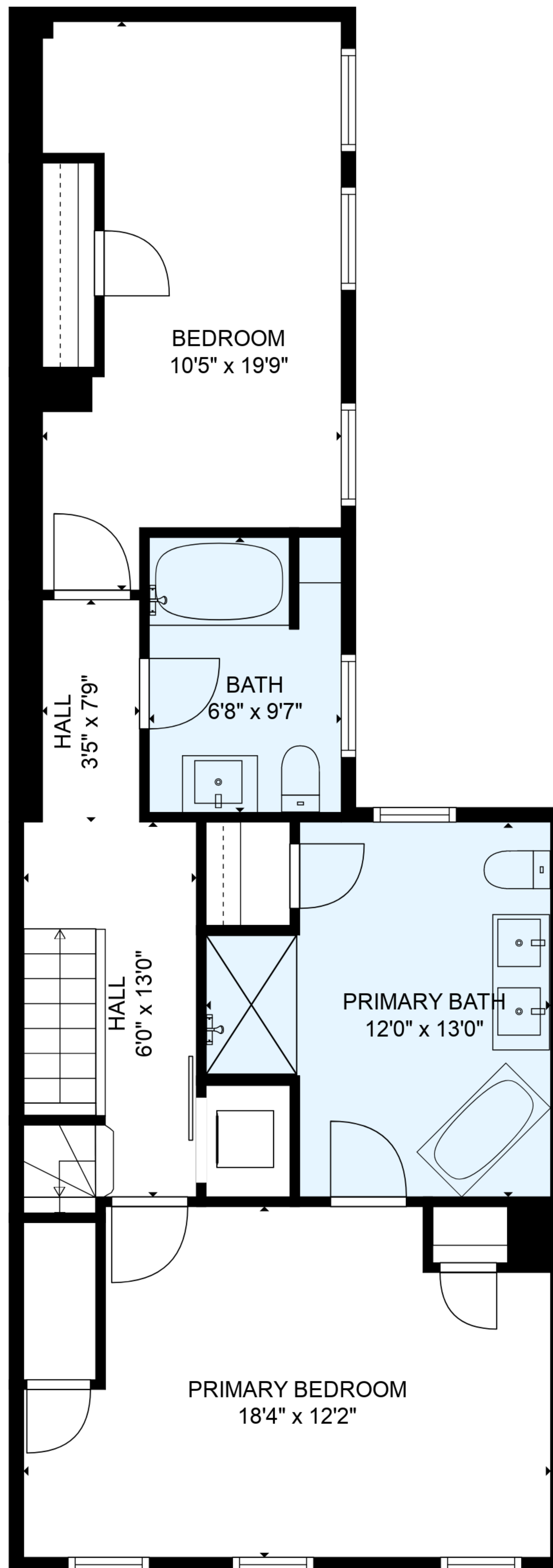
MEASUREMENTS ARE DEEMED RELIABLE BUT ARE NOT GUARANTEED.



TOTAL: 1799 sq. ft

BELOW GROUND: 0 sq. ft, FLOOR 2: 758 sq. ft, FLOOR 3: 757 sq. ft, FLOOR 4: 284 sq. ft
EXCLUDED AREAS: BASEMENT: 397 sq. ft, LOW CEILING: 123 sq. ft

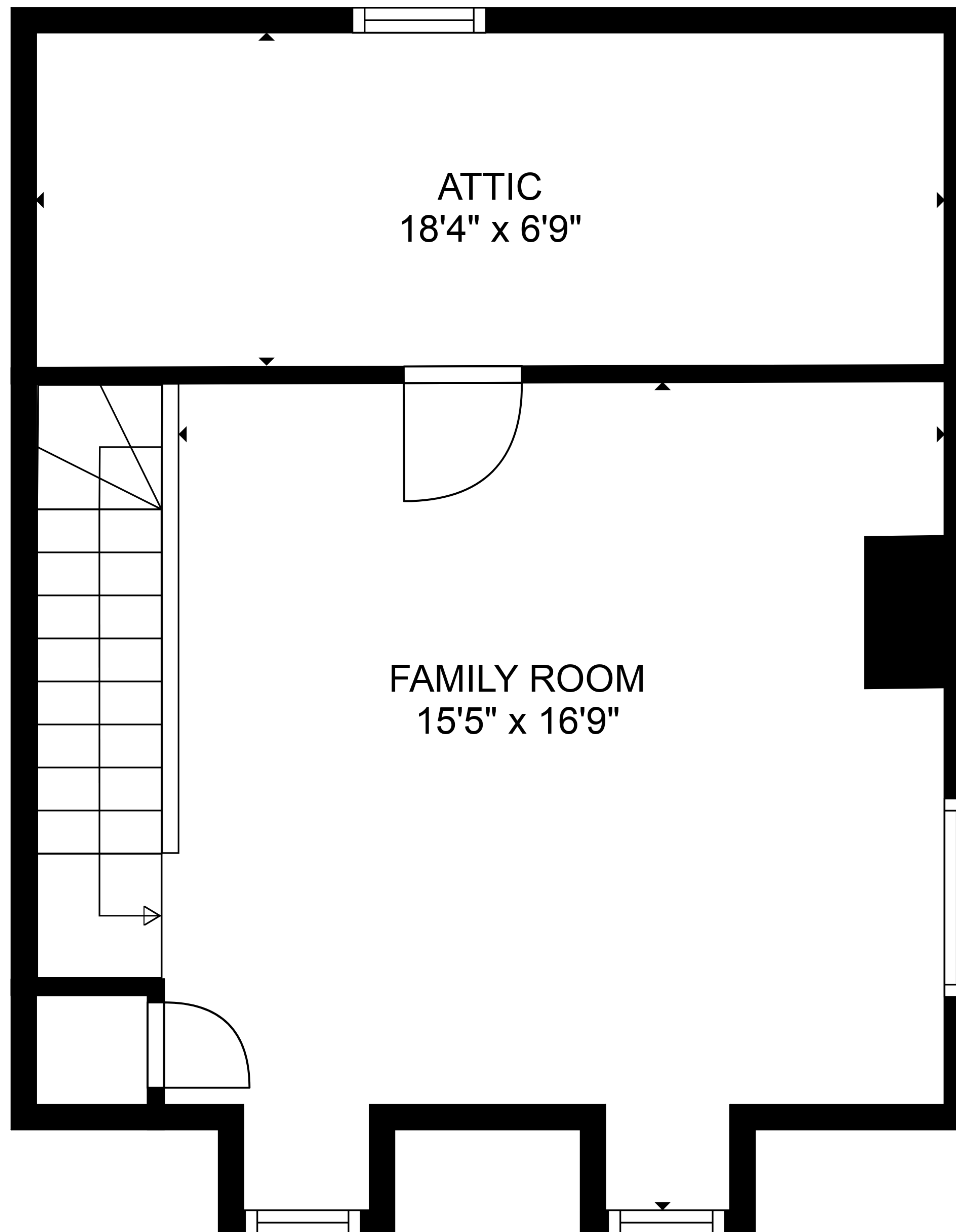
MEASUREMENTS ARE DEEMED RELIABLE BUT ARE NOT GUARANTEED.



TOTAL: 1799 sq. ft

BELOW GROUND: 0 sq. ft, FLOOR 2: 758 sq. ft, FLOOR 3: 757 sq. ft, FLOOR 4: 284 sq. ft
EXCLUDED AREAS: BASEMENT: 397 sq. ft, LOW CEILING: 123 sq. ft

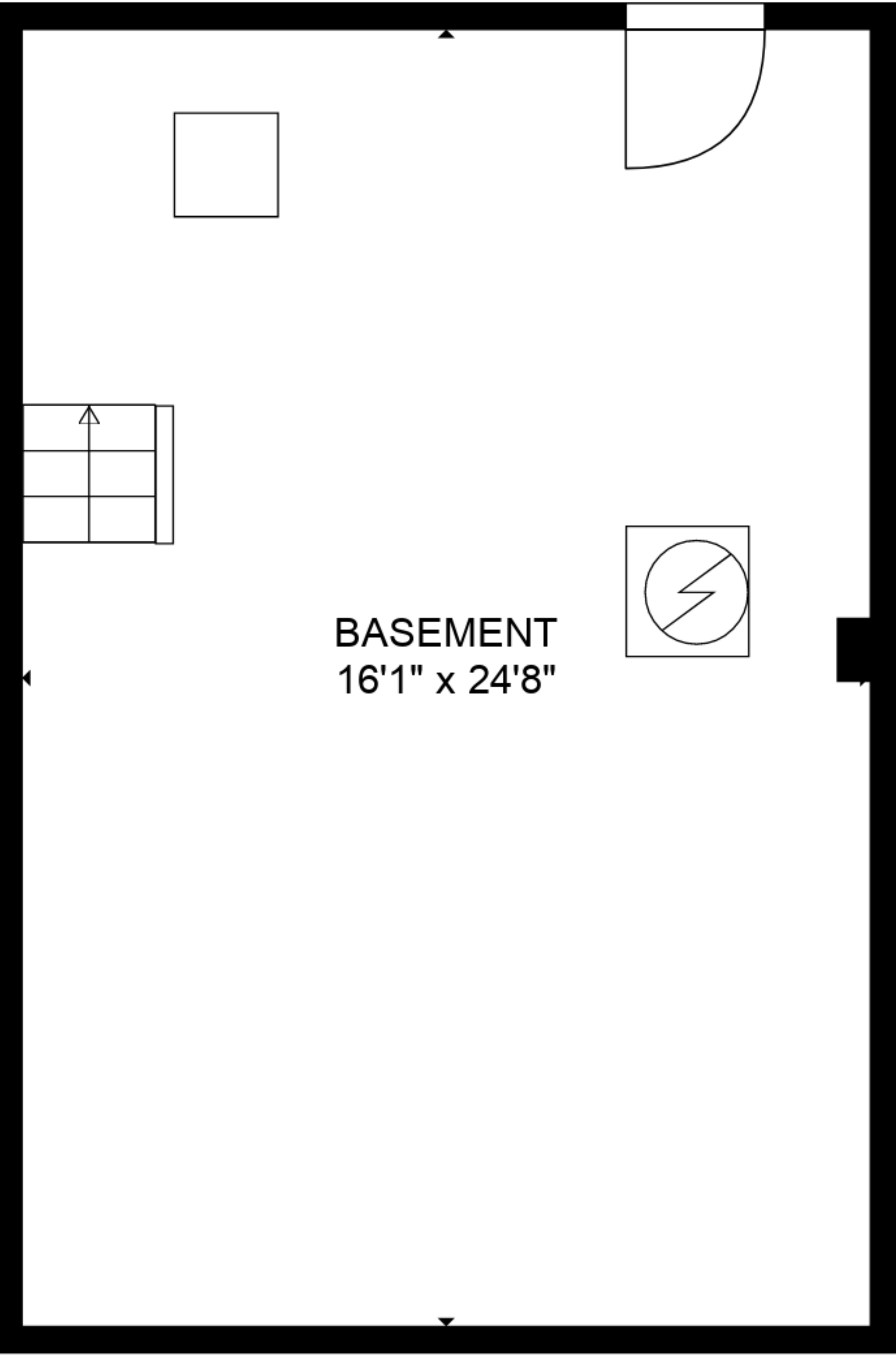
MEASUREMENTS ARE DEEMED RELIABLE BUT ARE NOT GUARANTEED.



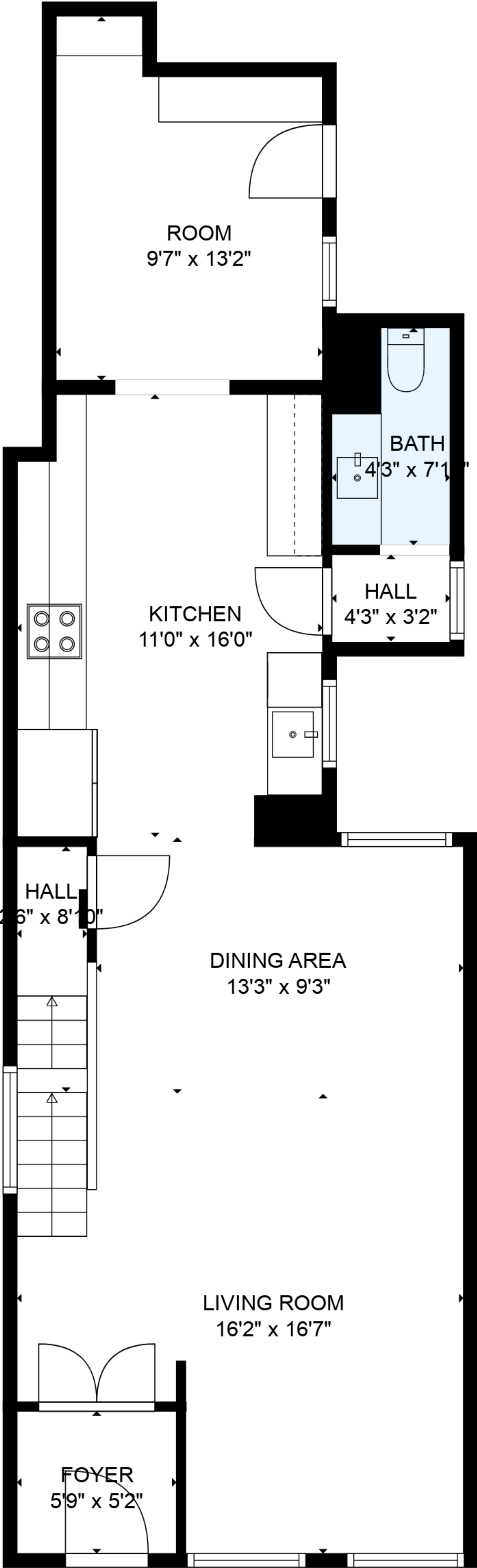
TOTAL: 1799 sq. ft

BELOW GROUND: 0 sq. ft, FLOOR 2: 758 sq. ft, FLOOR 3: 757 sq. ft, FLOOR 4: 284 sq. ft
EXCLUDED AREAS: BASEMENT: 397 sq. ft, LOW CEILING: 123 sq. ft

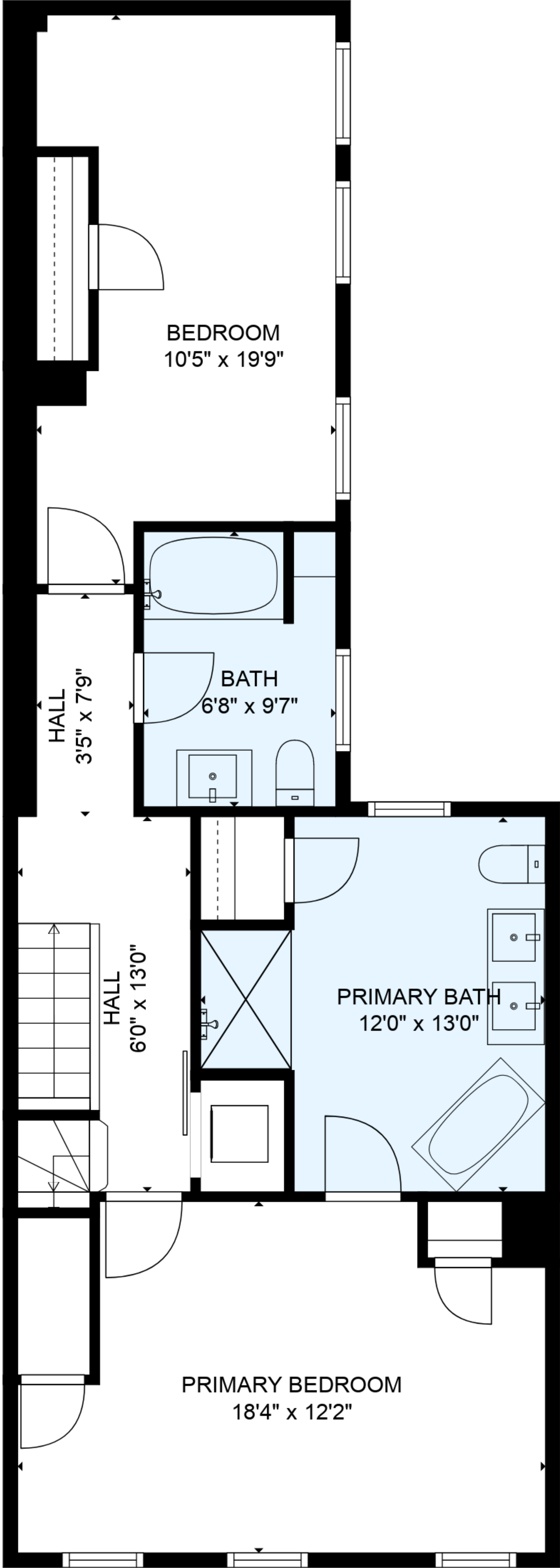
MEASUREMENTS ARE DEEMED RELIABLE BUT ARE NOT GUARANTEED.



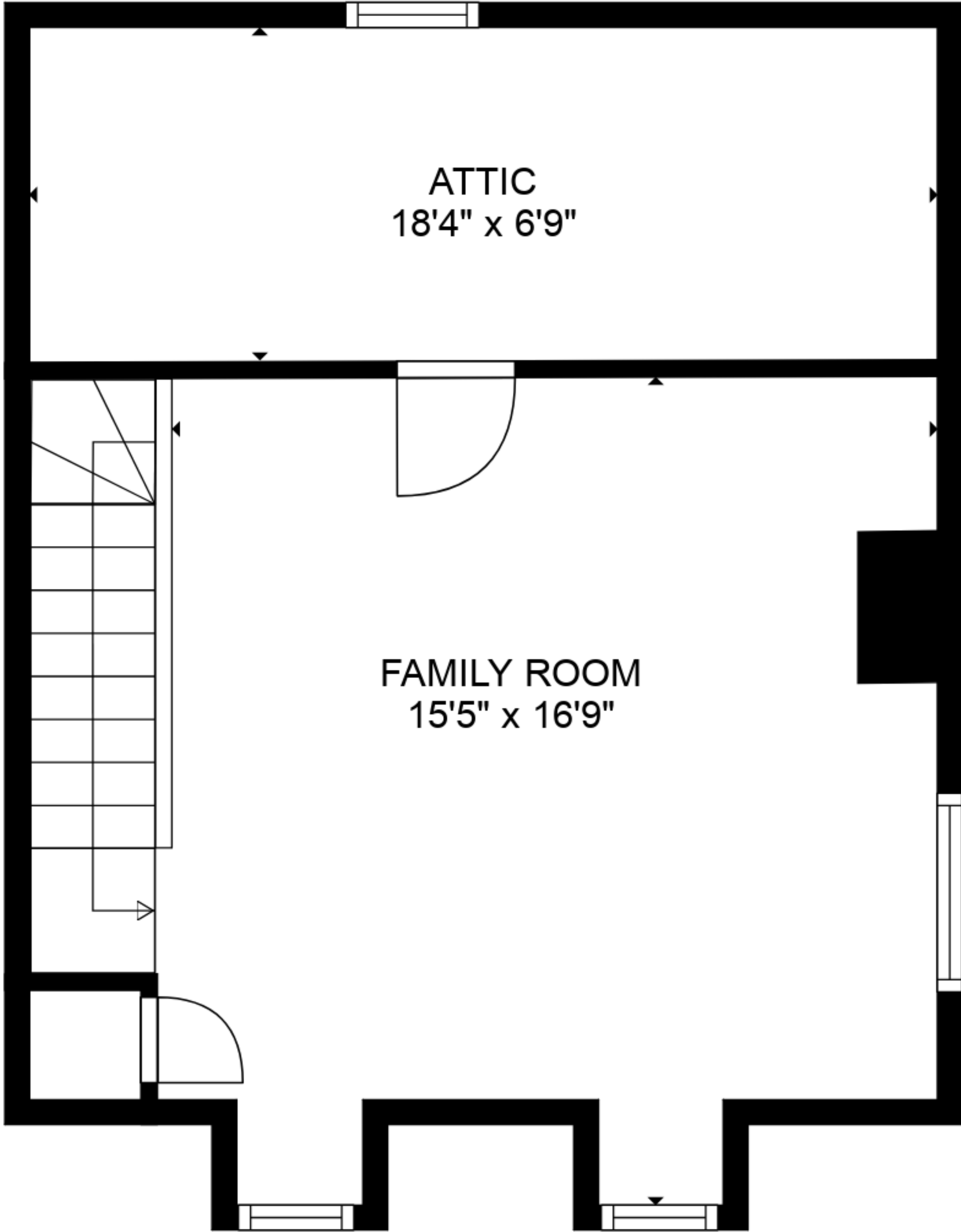
FLOOR 1



FLOOR 2



FLOOR 3



FLOOR 4

TOTAL: 1799 sq. ft
BELOW GROUND: 0 sq. ft, FLOOR 2: 758 sq. ft, FLOOR 3: 757 sq. ft, FLOOR 4: 284 sq. ft
EXCLUDED AREAS: BASEMENT: 397 sq. ft, LOW CEILING: 123 sq. ft

MEASUREMENTS ARE DEEMED RELIABLE BUT ARE NOT GUARANTEED.