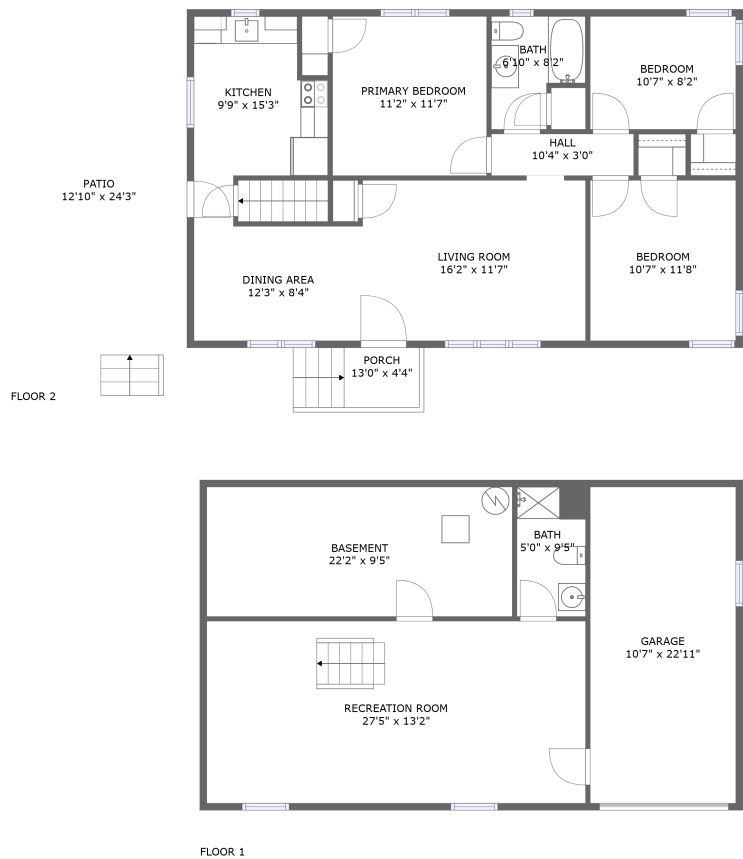


Home report

5851 Kings School Road, Bethel Park, Allegheny County,
Pennsylvania, United States, 15102

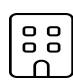


Total Area: 1344 sq. ft

Below Ground: 421 sq. ft, Floor 2: 923 sq. ft


Excluded: Garage 242 sq. ft, Basement 208 sq. ft, Porch 57 sq. ft, Patio 310 sq. ft, Walls: 134 sq. ft

Property summary

 **2** Floors

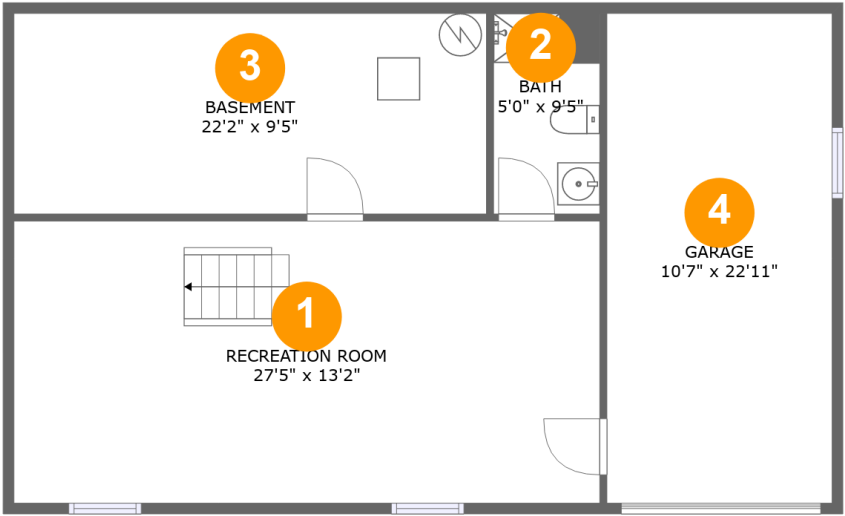
 **3** Bedrooms

 **2** Bathrooms

 **1** Garages

Home report

5851 Kings School Road, Bethel Park, Allegheny County,
Pennsylvania, United States, 15102

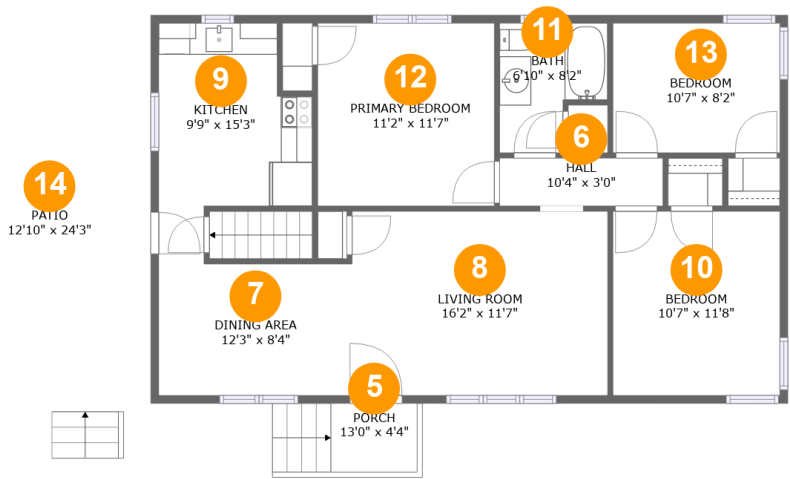


Room dimensions

Floor 1 Below ground Total:421sqft Excluded: 450sqft

#		Max Dimensions	sqft	Included
1	Recreation Room	27'5" x 13'2"	362 sq. ft	Yes
2	Bath	5'0" x 9'5"	47 sq. ft	Yes
3	Basement	22'2" x 9'5"	208 sq. ft	No
4	Garage	10'7" x 22'11"	242 sq. ft	No

5851 Kings School Road, Bethel Park, Allegheny County,
Pennsylvania, United States, 15102



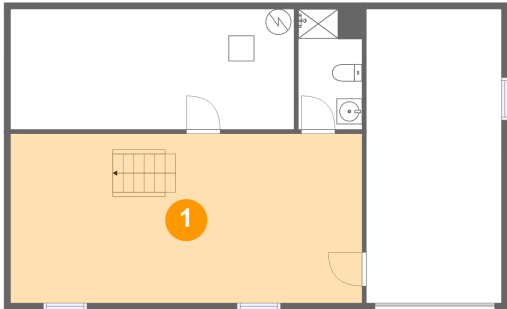
Room dimensions

Floor 2 Total:923sqft Excluded: 367sqft

#		Max Dimensions	sqft	Included
5	Porch	13'0" x 4'4"	57 sq. ft	No
6	Hall	10'4" x 3'0"	31 sq. ft	Yes
7	Dining Area	12'3" x 8'4"	101 sq. ft	Yes
8	Living Room	16'2" x 11'7"	188 sq. ft	Yes
9	Kitchen	9'9" x 15'3"	112 sq. ft	Yes
10	Bedroom	10'7" x 11'8"	123 sq. ft	Yes
11	Bath	6'10" x 8'2"	46 sq. ft	Yes
12	Primary Bedroom	11'2" x 11'7"	129 sq. ft	Yes
13	Bedroom	10'7" x 8'2"	86 sq. ft	Yes
14	Patio	12'10" x 24'3"	310 sq. ft	No

5851 Kings School Road, Bethel Park, Allegheny County,
Pennsylvania, United States, 15102

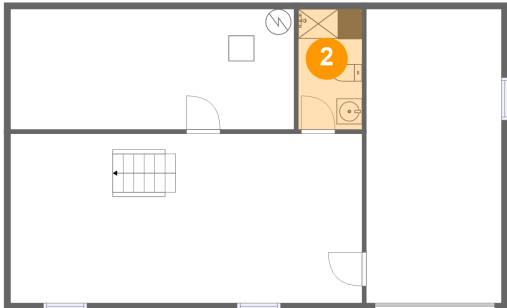
1 Floor 1 - Recreation Room



Max Dimensions: 27'5" x 13'2"
Calculated Area: 362 sq. ft
Included: No

Heated: Yes
Finished: Yes
Enclosed: Yes
Contiguous: No
Permitted: Yes
Wet space: No
Addition: No
Conversion: No

2 Floor 1 - Bath

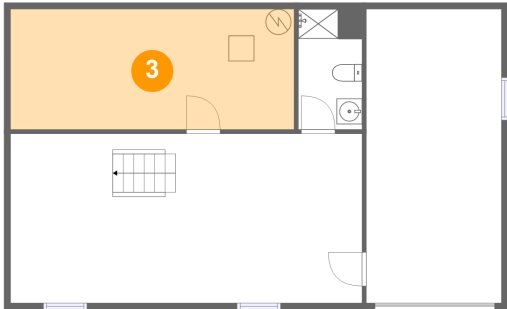


Max Dimensions: 5'0" x 9'5"
Calculated Area: 47 sq. ft
Included: No

Heated: Yes
Finished: Yes
Enclosed: Yes
Contiguous: No
Permitted: Yes
Wet space: Yes
Addition: No
Conversion: No

5851 Kings School Road, Bethel Park, Allegheny County,
Pennsylvania, United States, 15102

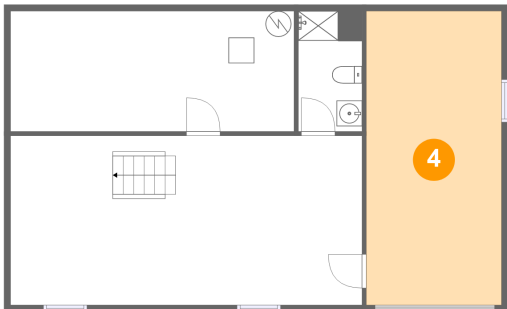
3 Floor 1 - Basement



Max Dimensions: 22'2" x 9'5"
Calculated Area: 208 sq. ft
Included: No

Heated: Yes
Finished: No
Enclosed: Yes
Contiguous: Yes
Permitted: Yes
Wet space: No
Addition: No
Conversion: No

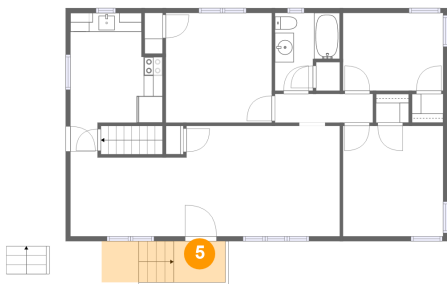
4 Floor 1 - Garage



Max Dimensions: 10'7" x 22'11"
Calculated Area: 242 sq. ft
Included: No

Heated: No
Finished: No
Enclosed: Yes
Contiguous: Yes
Permitted: Yes
Wet space: No
Addition: No
Conversion: No

5 Floor 2 - Porch

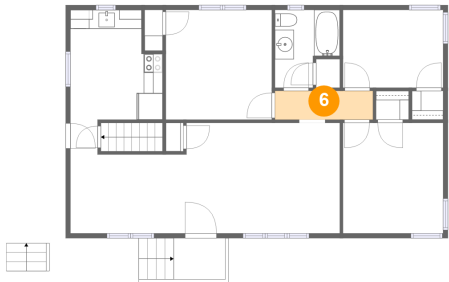


Max Dimensions: 13'0" x 4'4"
Calculated Area: 57 sq. ft
Included: No

Heated: No
Finished: Yes
Enclosed: No
Contiguous: Yes
Permitted: Yes
Wet space: No
Addition: No
Conversion: No

5851 Kings School Road, Bethel Park, Allegheny County,
Pennsylvania, United States, 15102

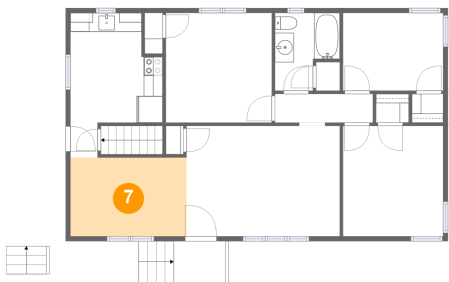
6 Floor 2 - Hall



Max Dimensions: 10'4" x 3'0"
Calculated Area: 31 sq. ft
Included: Yes

Heated: Yes
Finished: Yes
Enclosed: Yes
Contiguous: Yes
Permitted: Yes
Wet space: No
Addition: No
Conversion: No

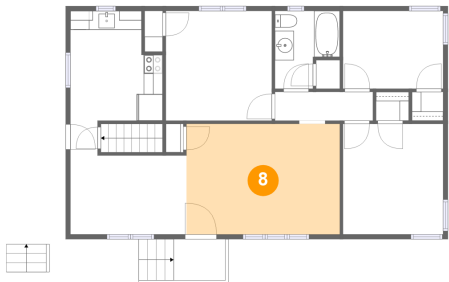
7 Floor 2 - Dining Area



Max Dimensions: 12'3" x 8'4"
Calculated Area: 101 sq. ft
Included: Yes

Heated: Yes
Finished: Yes
Enclosed: Yes
Contiguous: Yes
Permitted: Yes
Wet space: No
Addition: No
Conversion: No

8 Floor 2 - Living Room

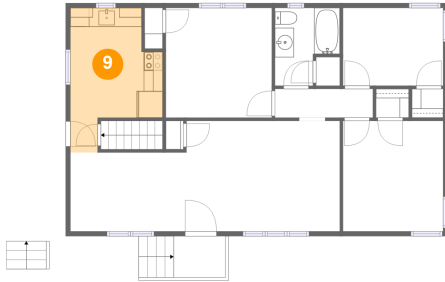


Max Dimensions: 16'2" x 11'7"
Calculated Area: 188 sq. ft
Included: Yes

Heated: Yes
Finished: Yes
Enclosed: Yes
Contiguous: Yes
Permitted: Yes
Wet space: No
Addition: No
Conversion: No

5851 Kings School Road, Bethel Park, Allegheny County,
Pennsylvania, United States, 15102

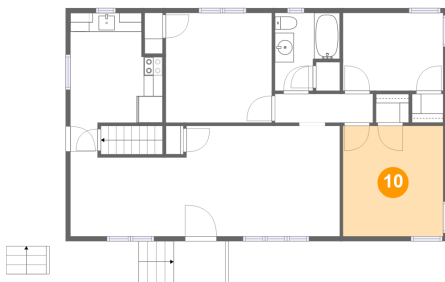
9 Floor 2 - Kitchen



Max Dimensions: 9'9" x 15'3"
Calculated Area: 112 sq. ft
Included: Yes

Heated: Yes
Finished: Yes
Enclosed: Yes
Contiguous: Yes
Permitted: Yes
Wet space: No
Addition: No
Conversion: No

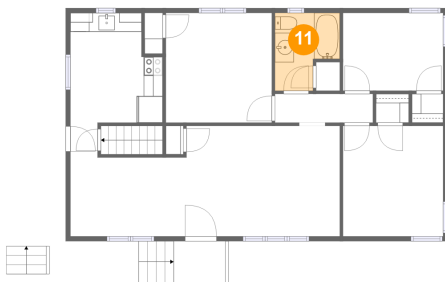
10 Floor 2 - Bedroom



Max Dimensions: 10'7" x 11'8"
Calculated Area: 123 sq. ft
Included: Yes

Heated: Yes
Finished: Yes
Enclosed: Yes
Contiguous: Yes
Permitted: Yes
Wet space: No
Addition: No
Conversion: No

11 Floor 2 - Bath

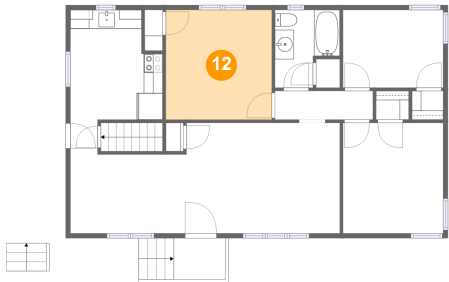


Max Dimensions: 6'10" x 8'2"
Calculated Area: 46 sq. ft
Included: Yes

Heated: Yes
Finished: Yes
Enclosed: Yes
Contiguous: Yes
Permitted: Yes
Wet space: Yes
Addition: No
Conversion: No

5851 Kings School Road, Bethel Park, Allegheny County,
Pennsylvania, United States, 15102

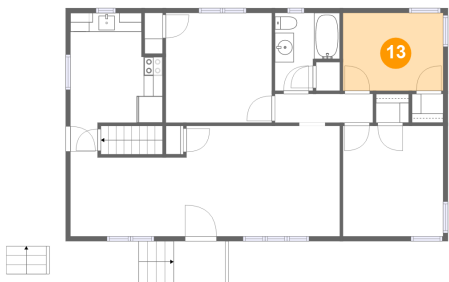
12 Floor 2 - Primary Bedroom



Max Dimensions: 11'2" x 11'7"
Calculated Area: 129 sq. ft
Included: Yes

Heated: Yes
Finished: Yes
Enclosed: Yes
Contiguous: Yes
Permitted: Yes
Wet space: No
Addition: No
Conversion: No

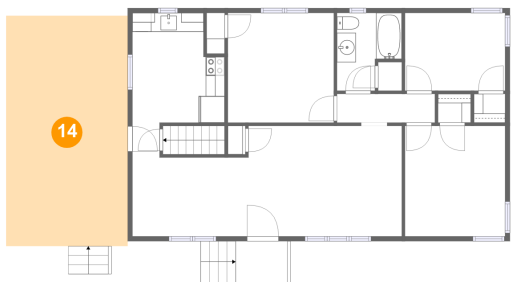
13 Floor 2 - Bedroom



Max Dimensions: 10'7" x 8'2"
Calculated Area: 86 sq. ft
Included: Yes

Heated: Yes
Finished: Yes
Enclosed: Yes
Contiguous: Yes
Permitted: Yes
Wet space: No
Addition: No
Conversion: No

14 Floor 2 - Patio



Max Dimensions: 12'10" x 24'3"
Calculated Area: 310 sq. ft
Included: No

Heated: No
Finished: Yes
Enclosed: No
Contiguous: Yes
Permitted: Yes
Wet space: No
Addition: No
Conversion: No