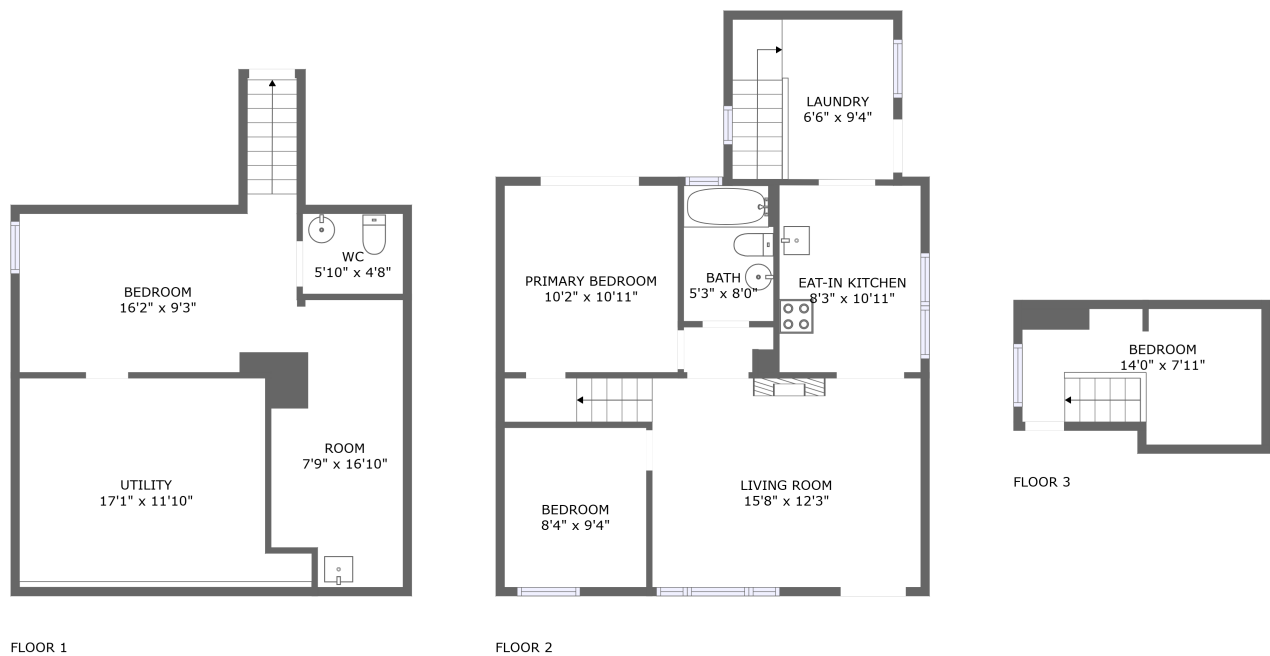
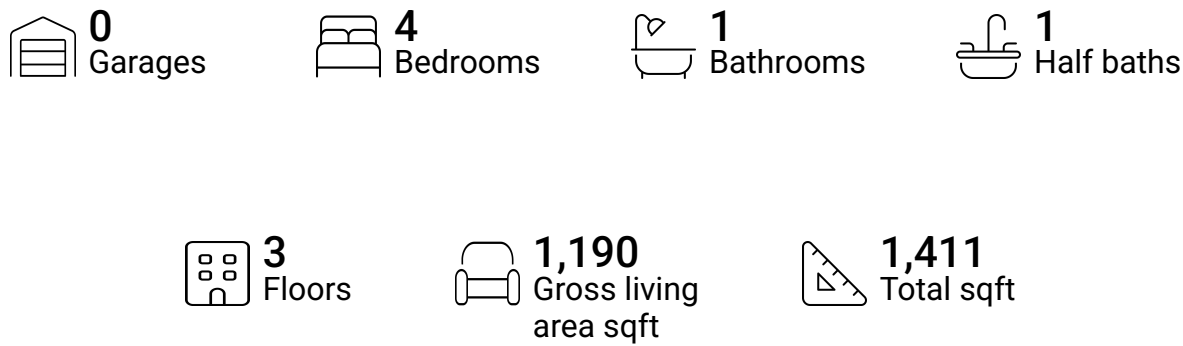


Home report

5 Vimy Street, Glenview, Cambridge, Waterloo County, Ontario,
Canada, N1R 4N5

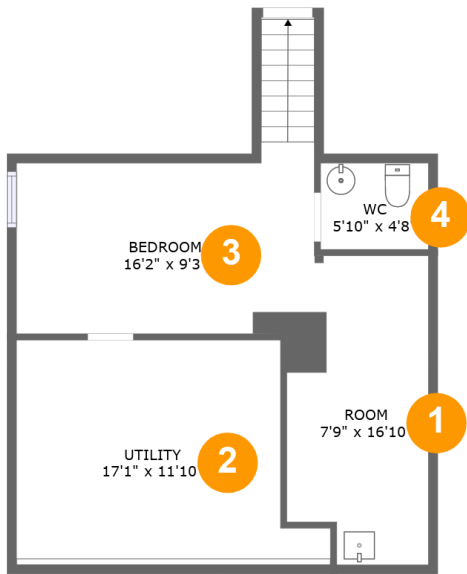


Property summary



Home report

5 Vimy Street, Glenview, Cambridge, Waterloo County, Ontario,
Canada, N1R 4N5



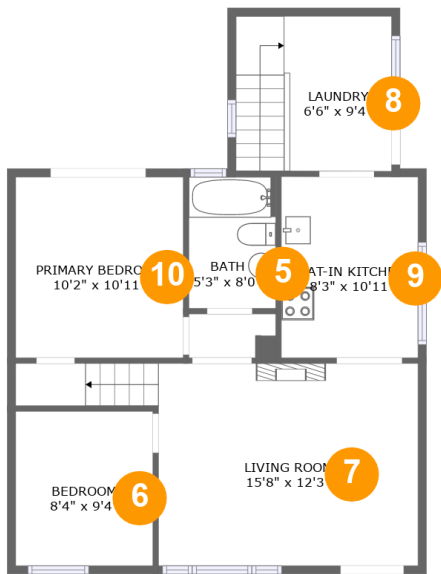
Room dimensions

Floor 1 Total sqft: 565 Living area: 369

#		Max Dimensions	sqft	Included
1	Room	7'9" x 16'10"	117 sq. ft	Yes
2	Utility	17'1" x 11'10"	181 sq. ft	No
3	Bedroom	16'2" x 9'3"	173 sq. ft	Yes
4	WC	5'10" x 4'8"	28 sq. ft	Yes

Home report

5 Vimy Street, Glenview, Cambridge, Waterloo County, Ontario,
Canada, N1R 4N5



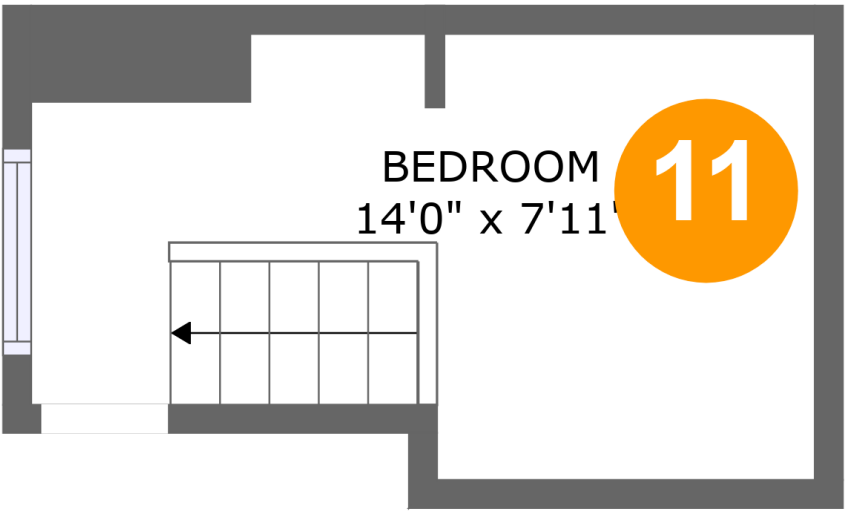
Room dimensions

Floor 2 Total sqft: 721 Living area: 721

#		Max Dimensions	sqft	Included
5	Bath	5'3" x 8'0"	42 sq. ft	Yes
6	Bedroom	8'4" x 9'4"	77 sq. ft	Yes
7	Living Room	15'8" x 12'3"	214 sq. ft	Yes
8	Laundry	6'6" x 9'4"	88 sq. ft	Yes
9	Eat-in Kitchen	8'3" x 10'11"	90 sq. ft	Yes
10	Primary Bedroom	10'2" x 10'11"	111 sq. ft	Yes

Home report

5 Vimy Street, Glenview, Cambridge, Waterloo County, Ontario,
Canada, N1R 4N5



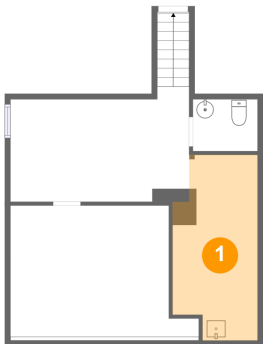
Room dimensions

Floor 3 Total sqft: 125 Living area: 100

#		Max Dimensions	sqft	Included
11	Bedroom	14'0" x 7'11"	88 sq. ft	Yes

5 Vimy Street, Glenview, Cambridge, Waterloo County, Ontario,
Canada, N1R 4N5

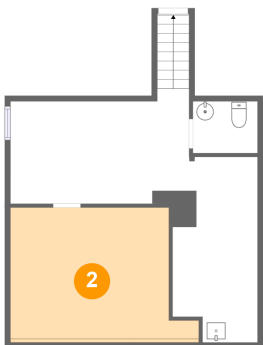
1 Floor 1 - Room



Max Dimensions: 7'9" x
16'10"
Calculated Area: 117 sq. ft
Included: Yes

Heated: Yes
Finished: Yes
Enclosed: Yes
Contiguous:
Yes
Permitted: Yes
Wet space: No
Addition: No
Conversion: No

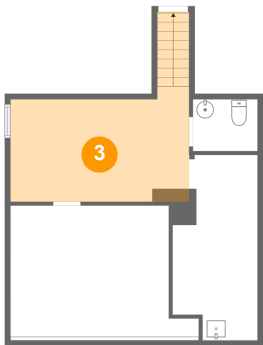
2 Floor 1 - Utility



Max Dimensions: 17'1" x
11'10"
Calculated Area: 181 sq. ft
Included: No

Heated: Yes
Finished: No
Enclosed: Yes
Contiguous:
Yes
Permitted: Yes
Wet space: No
Addition: No
Conversion: No

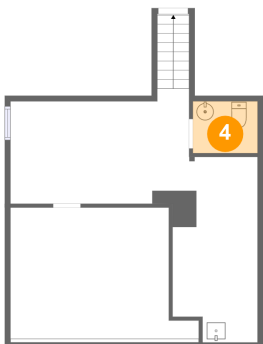
3 Floor 1 - Bedroom



Max Dimensions: 16'2" x 9'3"
Calculated Area: 173 sq. ft
Included: Yes

Heated: Yes
Finished: Yes
Enclosed: Yes
Contiguous: Yes
Permitted: Yes
Wet space: No
Addition: No
Conversion: No

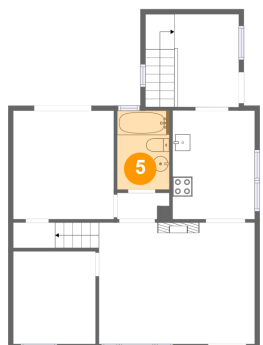
4 Floor 1 - WC



Max Dimensions: 5'10" x 4'8"
Calculated Area: 28 sq. ft
Included: Yes

Heated: Yes
Finished: Yes
Enclosed: Yes
Contiguous: Yes
Permitted: Yes
Wet space: Yes
Addition: No
Conversion: No

5 Floor 2 - Bath

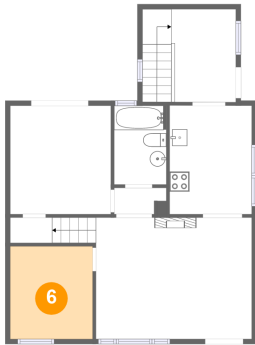


Max Dimensions: 5'3" x 8'0"
Calculated Area: 42 sq. ft
Included: Yes

Heated: Yes
Finished: Yes
Enclosed: Yes
Contiguous: Yes
Permitted: Yes
Wet space: Yes
Addition: No
Conversion: No

5 Vimy Street, Glenview, Cambridge, Waterloo County, Ontario,
Canada, N1R 4N5

6 Floor 2 - Bedroom



Max Dimensions: 8'4" x 9'4"
Calculated Area: 77 sq. ft
Included: Yes

Heated: Yes
Finished: Yes
Enclosed: Yes
Contiguous: Yes
Permitted: Yes
Wet space: No
Addition: No
Conversion: No

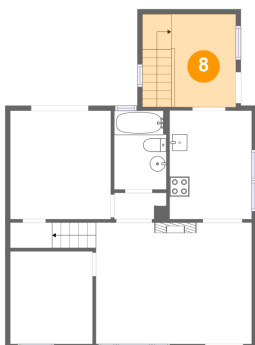
7 Floor 2 - Living Room



Max Dimensions: 15'8" x 12'3"
Calculated Area: 214 sq. ft
Included: Yes

Heated: Yes
Finished: Yes
Enclosed: Yes
Contiguous: Yes
Permitted: Yes
Wet space: No
Addition: No
Conversion: No

8 Floor 2 - Laundry

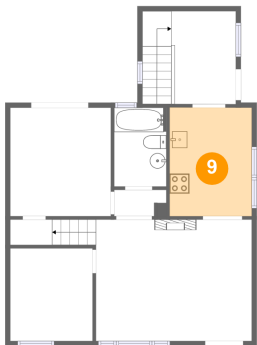


Max Dimensions: 6'6" x 9'4"
Calculated Area: 88 sq. ft
Included: Yes

Heated: Yes
Finished: Yes
Enclosed: Yes
Contiguous: Yes
Permitted: Yes
Wet space: No
Addition: No
Conversion: No

5 Vimy Street, Glenview, Cambridge, Waterloo County, Ontario,
Canada, N1R 4N5

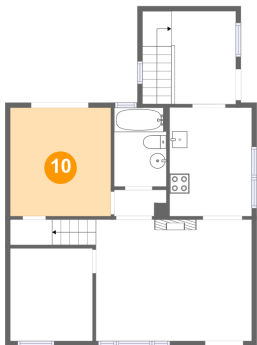
9 Floor 2 - Eat-in Kitchen



Max Dimensions: 8'3" x 10'11"
Calculated Area: 90 sq. ft
Included: Yes

Heated: Yes
Finished: Yes
Enclosed: Yes
Contiguous: Yes
Permitted: Yes
Wet space: No
Addition: No
Conversion: No

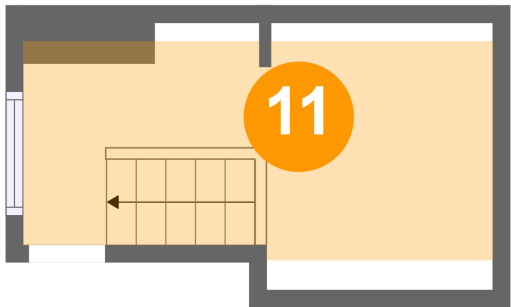
10 Floor 2 - Primary Bedroom



Max Dimensions: 10'2" x 10'11"
Calculated Area: 111 sq. ft
Included: Yes

Heated: Yes
Finished: Yes
Enclosed: Yes
Contiguous: Yes
Permitted: Yes
Wet space: No
Addition: No
Conversion: No

11 Floor 3 - Bedroom



Max Dimensions: 14'0" x 7'11"
Calculated Area: 88 sq. ft
Included: Yes

Heated: Yes
Finished: Yes
Enclosed: Yes
Contiguous: Yes
Permitted: Yes
Wet space: No
Addition: No
Conversion: No