

74 Misty Lane, Ephrata, Lancaster County, Pennsylvania, United States, 17522



Property summary

 **1** Garages

 **3** Bedrooms

 **2** Bathrooms

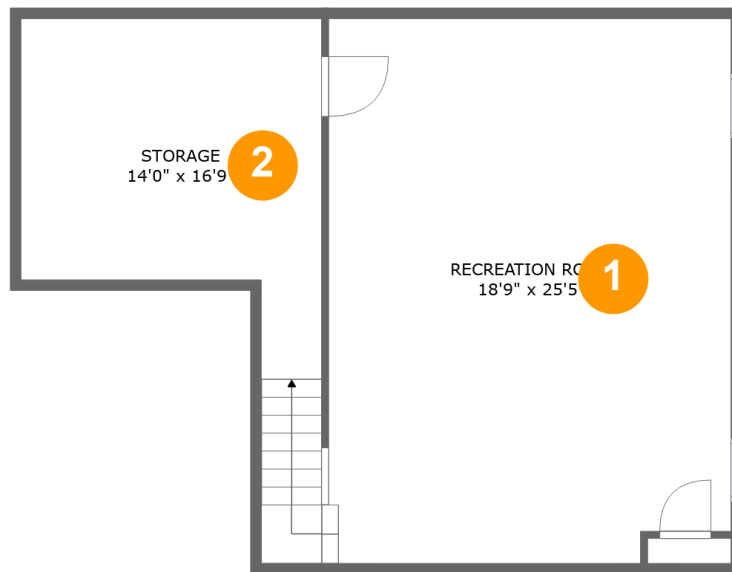
 **0** Half baths

 **3** Floors

 **1,502**
Gross living
area sqft

 **3,015**
Total sqft

74 Misty Lane, Ephrata, Lancaster County, Pennsylvania, United States, 17522



Room dimensions

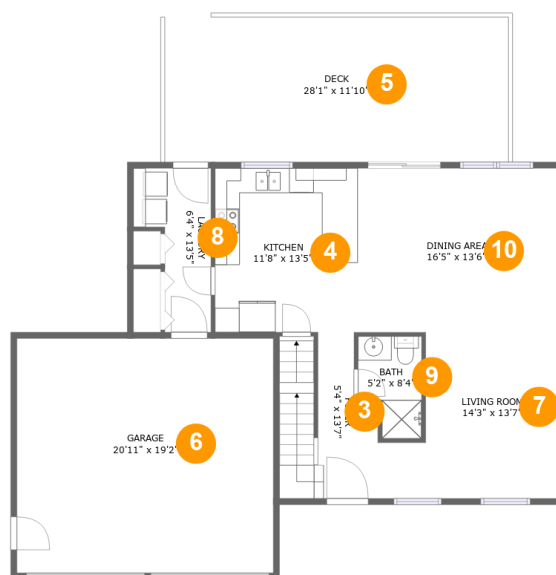
Floor 1

Total sqft: 753

Living area: 0

#		Dimensions	sqft	Counted as living area
1	Recreation Room	18'9" x 25'5"	497 sq. ft	No
2	Storage	14'0" x 16'9"	184 sq. ft	No

74 Misty Lane, Ephrata, Lancaster County, Pennsylvania, United States, 17522



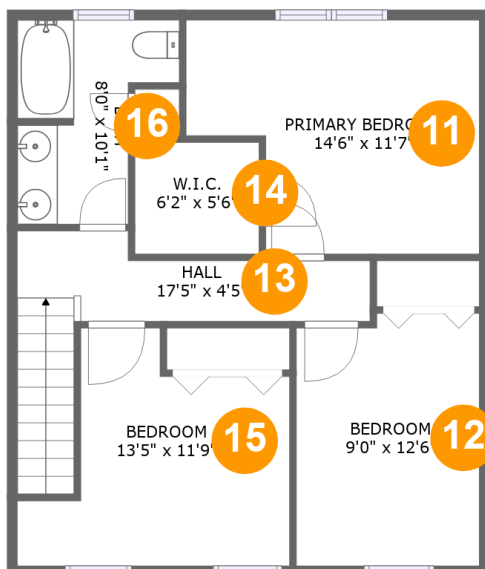
Room dimensions

Floor 2

Total sqft: 1597 Living area: 837

#		Dimensions	sqft	Counted as living area
3	Foyer	5'4" x 13'7"	93 sq. ft	Yes
4	Kitchen	11'8" x 13'5"	156 sq. ft	Yes
5	Deck	28'1" x 11'10"	332 sq. ft	No
6	Garage	20'11" x 19'2"	400 sq. ft	No
7	Living Room	14'3" x 13'7"	162 sq. ft	Yes
8	Laundry	6'4" x 13'5"	63 sq. ft	Yes
9	Bath	5'2" x 8'4"	40 sq. ft	Yes
10	Dining Area	16'5" x 13'6"	221 sq. ft	Yes

74 Misty Lane, Ephrata, Lancaster County, Pennsylvania, United States, 17522



Room dimensions

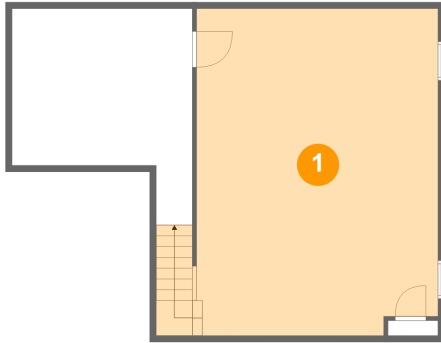
Floor 3

Total sqft: 665 Living area: 665

#		Dimensions	sqft	Counted as living area
11	Primary Bedroom	14'6" x 11'7"	144 sq. ft	Yes
12	Bedroom	9'0" x 12'6"	110 sq. ft	Yes
13	Hall	17'5" x 4'5"	84 sq. ft	Yes
14	W.I.C.	6'2" x 5'6"	34 sq. ft	Yes
15	Bedroom	13'5" x 11'9"	116 sq. ft	Yes
16	Bath	8'0" x 10'1"	62 sq. ft	Yes

**74 Misty Lane, Ephrata, Lancaster County,
Pennsylvania, United States, 17522**

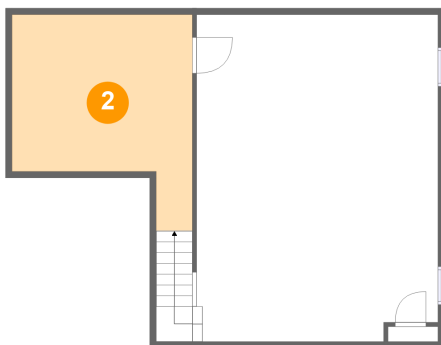
1 Floor 1 - Recreation Room



Dimensions: 18'9" x 25'5"
Area: 497 sq. ft
Counted as living area: No

Heated: Yes
Finished: Yes
Enclosed: Yes
Contiguous: No
Permitted: Yes
Wet space: No
Addition: No
Conversion: No

2 Floor 1 - Storage



Dimensions: 14'0" x 16'9"
Area: 184 sq. ft
Counted as living area: No

Heated: No
Finished: No
Enclosed: No
Contiguous: Yes
Permitted: Yes
Wet space: No
Addition: No
Conversion: No

74 Misty Lane, Ephrata, Lancaster County, Pennsylvania, United States, 17522

3 Floor 2 - Foyer



Dimensions: 5'4" x 13'7"
Area: 93 sq. ft
Counted as living area: Yes

Heated: Yes
Finished: Yes
Enclosed: Yes
Contiguous: Yes
Permitted: Yes
Wet space: No
Addition: No
Conversion: No

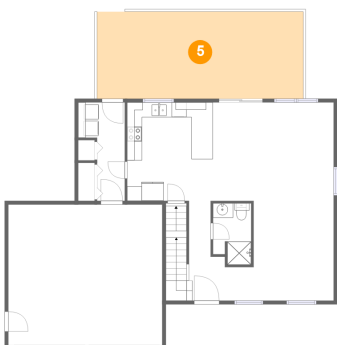
4 Floor 2 - Kitchen



Dimensions: 11'8" x 13'5"
Area: 156 sq. ft
Counted as living area: Yes

Heated: Yes
Finished: Yes
Enclosed: Yes
Contiguous: Yes
Permitted: Yes
Wet space: No
Addition: No
Conversion: No

5 Floor 2 - Deck



Dimensions: 28'1" x 11'10"
Area: 332 sq. ft
Counted as living area: No

Heated: No
Finished: Yes
Enclosed: No
Contiguous: Yes
Permitted: Yes
Wet space: No
Addition: No
Conversion: No

**74 Misty Lane, Ephrata, Lancaster County,
Pennsylvania, United States, 17522**

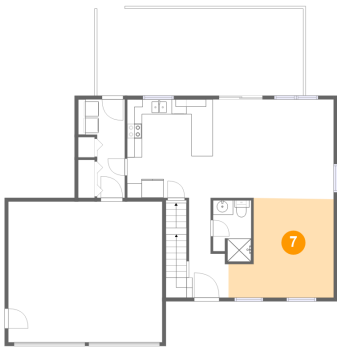
6 Floor 2 - Garage



Dimensions: 20'11" x 19'2"
Area: 400 sq. ft
Counted as living area: No

Heated: No
Finished: No
Enclosed: Yes
Contiguous: Yes
Permitted: Yes
Wet space: No
Addition: No
Conversion: No

7 Floor 2 - Living Room



Dimensions: 14'3" x 13'7"
Area: 162 sq. ft
Counted as living area: Yes

Heated: Yes
Finished: Yes
Enclosed: Yes
Contiguous: Yes
Permitted: Yes
Wet space: No
Addition: No
Conversion: No

8 Floor 2 - Laundry



Dimensions: 6'4" x 13'5"
Area: 63 sq. ft
Counted as living area: Yes

Heated: Yes
Finished: Yes
Enclosed: Yes
Contiguous: Yes
Permitted: Yes
Wet space: No
Addition: No
Conversion: No

**74 Misty Lane, Ephrata, Lancaster County,
Pennsylvania, United States, 17522**

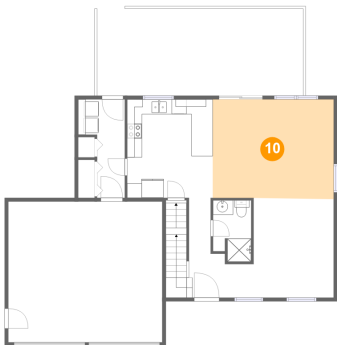
9 Floor 2 - Bath



Dimensions: 5'2" x 8'4"
Area: 40 sq. ft
Counted as living area: Yes

Heated: Yes
Finished: Yes
Enclosed: Yes
Contiguous: Yes
Permitted: Yes
Wet space: Yes
Addition: No
Conversion: No

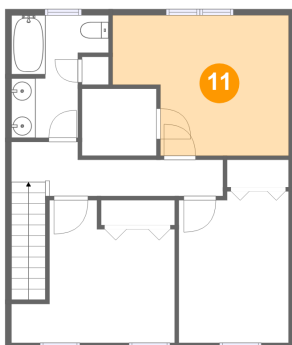
10 Floor 2 - Dining Area



Dimensions: 16'5" x 13'6"
Area: 221 sq. ft
Counted as living area: Yes

Heated: Yes
Finished: Yes
Enclosed: Yes
Contiguous: Yes
Permitted: Yes
Wet space: No
Addition: No
Conversion: No

11 Floor 3 - Primary Bedroom

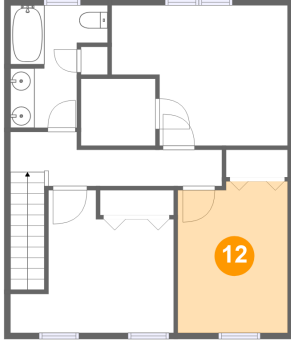


Dimensions: 14'6" x 11'7"
Area: 144 sq. ft
Counted as living area: Yes

Heated: Yes
Finished: Yes
Enclosed: Yes
Contiguous: Yes
Permitted: Yes
Wet space: No
Addition: No
Conversion: No

**74 Misty Lane, Ephrata, Lancaster County,
Pennsylvania, United States, 17522**

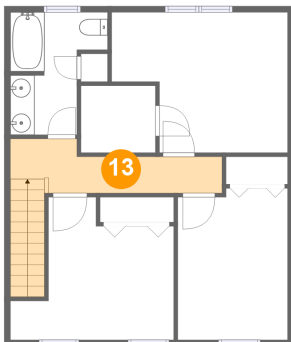
12 Floor 3 - Bedroom



Dimensions: 9'0" x 12'6"
Area: 110 sq. ft
Counted as living area: Yes

Heated: Yes
Finished: Yes
Enclosed: Yes
Contiguous: Yes
Permitted: Yes
Wet space: No
Addition: No
Conversion: No

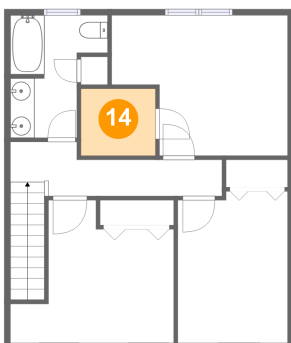
13 Floor 3 - Hall



Dimensions: 17'5" x 4'5"
Area: 84 sq. ft
Counted as living area: Yes

Heated: Yes
Finished: Yes
Enclosed: Yes
Contiguous: Yes
Permitted: Yes
Wet space: No
Addition: No
Conversion: No

14 Floor 3 - W.I.C.

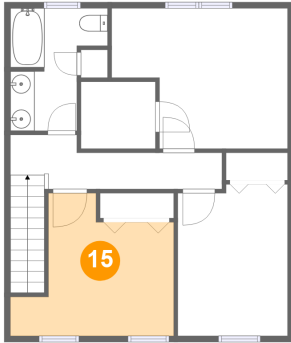


Dimensions: 6'2" x 5'6"
Area: 34 sq. ft
Counted as living area: Yes

Heated: Yes
Finished: Yes
Enclosed: Yes
Contiguous: Yes
Permitted: Yes
Wet space: No
Addition: No
Conversion: No

**74 Misty Lane, Ephrata, Lancaster County,
Pennsylvania, United States, 17522**

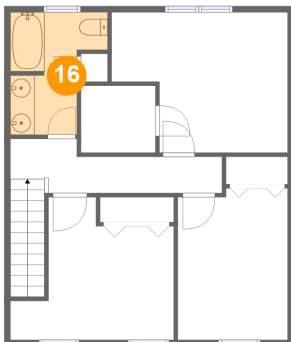
15 Floor 3 - Bedroom



Dimensions: 13'5" x 11'9"
Area: 116 sq. ft
Counted as living area: Yes

Heated: Yes
Finished: Yes
Enclosed: Yes
Contiguous: Yes
Permitted: Yes
Wet space: No
Addition: No
Conversion: No

16 Floor 3 - Bath



Dimensions: 8'0" x 10'1"
Area: 62 sq. ft
Counted as living area: Yes

Heated: Yes
Finished: Yes
Enclosed: Yes
Contiguous: Yes
Permitted: Yes
Wet space: Yes
Addition: No
Conversion: No