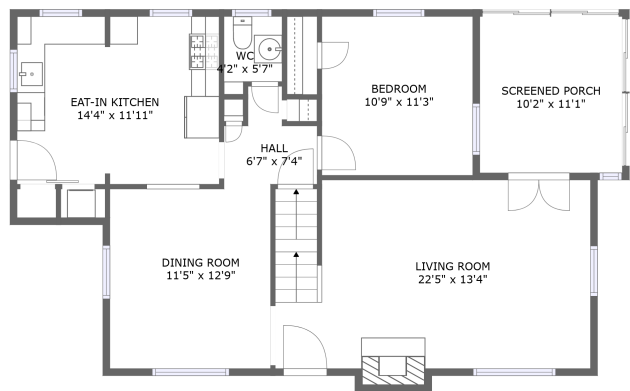
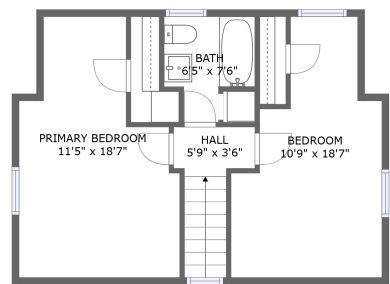


Home report

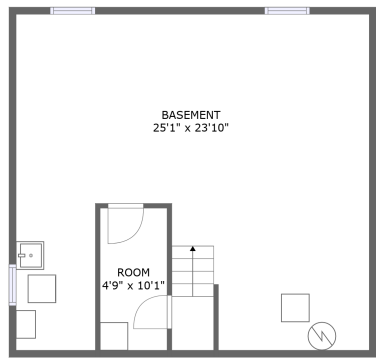
323 Embury Road, Rochester, Monroe County, New York, United States, 14625



FLOOR 2





FLOOR 3





FLOOR 1


Property summary


**0** Garages


**3** Bedrooms

**1** Bathrooms

**1** Half baths

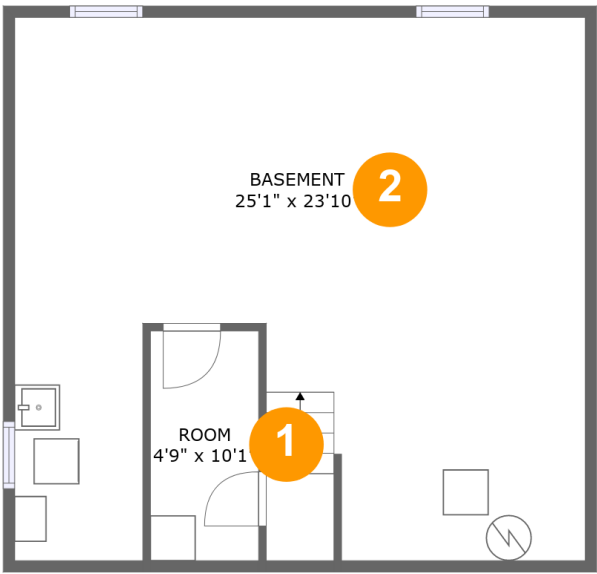
**3** Floors

**1,327** Gross living area sqft

**2,201** Total sqft

Home report

323 Embury Road, Rochester, Monroe County, New York, United States, 14625



Room dimensions

Floor 1 Total sqft: 649 Living area: 0

#		Dimensions	sqft	Counted as living area
1	Room	4'9" x 10'1"	48 sq. ft	No
2	Basement	25'1" x 23'10"	541 sq. ft	No

Home report

323 Embury Road, Rochester, Monroe County, New York, United States, 14625



Room dimensions

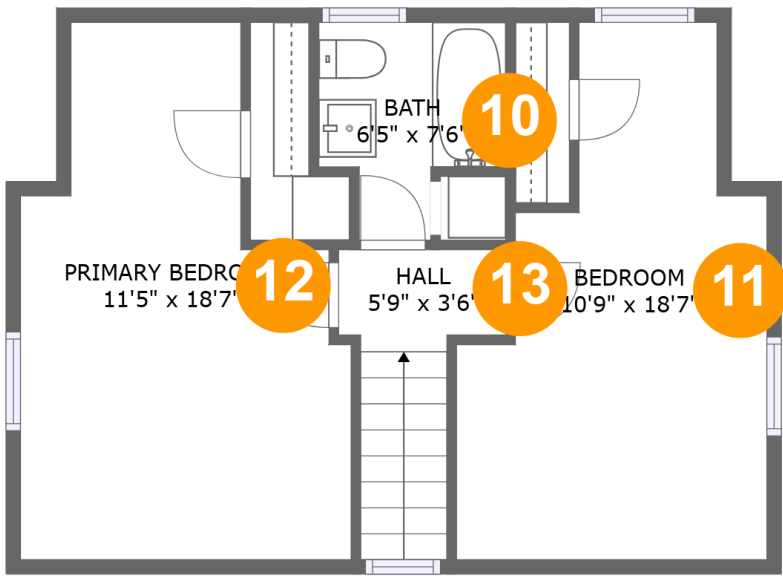
Floor 2

Total sqft: 1050 Living area: 919

#		Dimensions	sqft	Counted as living area
3	Screened Porch	10'2" x 11'1"	113 sq. ft	No
4	Dining Room	11'5" x 12'9"	146 sq. ft	Yes
5	Eat-in Kitchen	14'4" x 11'11"	172 sq. ft	Yes
6	Living Room	22'5" x 13'4"	302 sq. ft	Yes
7	WC	4'2" x 5'7"	20 sq. ft	Yes
8	Hall	6'7" x 7'4"	35 sq. ft	Yes
9	Bedroom	10'9" x 11'3"	121 sq. ft	Yes

Home report

323 Embury Road, Rochester, Monroe County, New York, United States, 14625

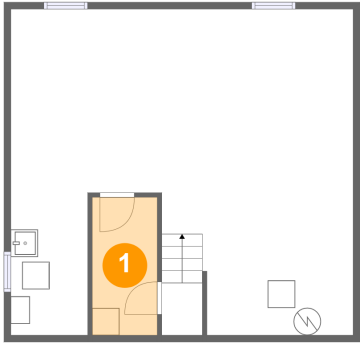


Room dimensions

Floor 3 Total sqft: 502 Living area: 408

#		Dimensions	sqft	Counted as living area
10	Bath	6'5" x 7'6"	38 sq. ft	Yes
11	Bedroom	10'9" x 18'7"	114 sq. ft	Yes
12	Primary Bedroom	11'5" x 18'7"	130 sq. ft	Yes
13	Hall	5'9" x 3'6"	40 sq. ft	Yes

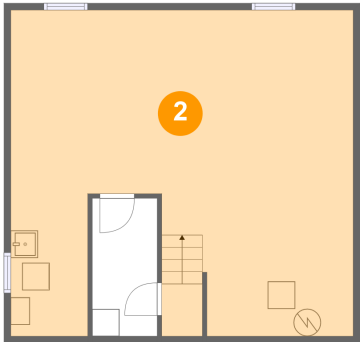
1 Floor 1 - Room



Dimensions: 4'9" x 10'1"
Area: 48 sq. ft
Counted as living area: No

Heated: Yes
Finished: Yes
Enclosed: Yes
Contiguous: No
Permitted: Yes
Wet space: No
Addition: No
Conversion: No

2 Floor 1 - Basement



Dimensions: 25'1" x 23'10"
Area: 541 sq. ft
Counted as living area: No

Heated: Yes
Finished: No
Enclosed: Yes
Contiguous: Yes
Permitted: Yes
Wet space: No
Addition: No
Conversion: No

323 Embury Road, Rochester, Monroe County, New York, United States, 14625

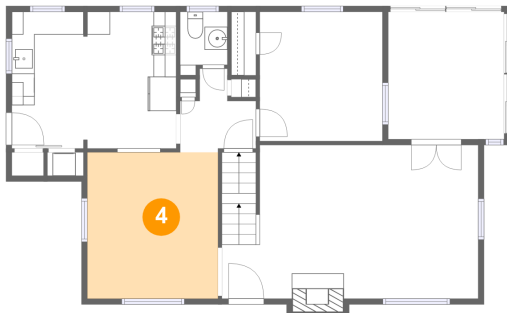
3 Floor 2 - Screened Porch



Dimensions: 10'2" x 11'1"
Area: 113 sq. ft
Counted as living area: No

Heated: No
Finished: Yes
Enclosed: No
Contiguous: Yes
Permitted: Yes
Wet space: No
Addition: No
Conversion: No

4 Floor 2 - Dining Room



Dimensions: 11'5" x 12'9"
Area: 146 sq. ft
Counted as living area: Yes

Heated: Yes
Finished: Yes
Enclosed: Yes
Contiguous: Yes
Permitted: Yes
Wet space: No
Addition: No
Conversion: No

5 Floor 2 - Eat-in Kitchen



Dimensions: 14'4" x 11'11"
Area: 172 sq. ft
Counted as living area: Yes

Heated: Yes
Finished: Yes
Enclosed: Yes
Contiguous: Yes
Permitted: Yes
Wet space: No
Addition: No
Conversion: No

323 Embury Road, Rochester, Monroe County, New York, United States, 14625

6 Floor 2 - Living Room



Dimensions: 22'5" x 13'4"
Area: 302 sq. ft
Counted as living area: Yes

Heated: Yes
Finished: Yes
Enclosed: Yes
Contiguous: Yes
Permitted: Yes
Wet space: No
Addition: No
Conversion: No

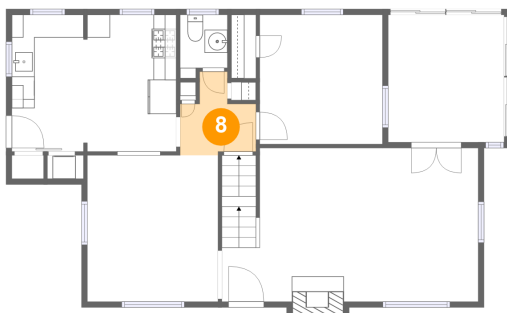
7 Floor 2 - WC



Dimensions: 4'2" x 5'7"
Area: 20 sq. ft
Counted as living area: Yes

Heated: Yes
Finished: Yes
Enclosed: Yes
Contiguous: Yes
Permitted: Yes
Wet space: Yes
Addition: No
Conversion: No

8 Floor 2 - Hall



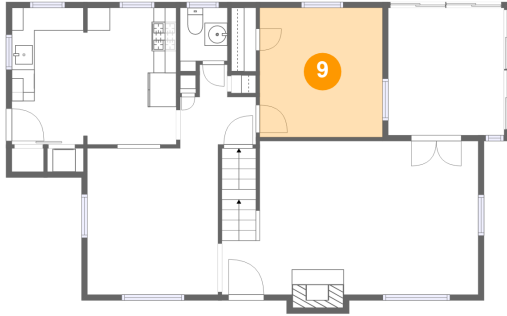
Dimensions: 6'7" x 7'4"
Area: 35 sq. ft
Counted as living area: Yes

Heated: Yes
Finished: Yes
Enclosed: Yes
Contiguous: Yes
Permitted: Yes
Wet space: No
Addition: No
Conversion: No

Home report

323 Embury Road, Rochester, Monroe County, New York, United States, 14625

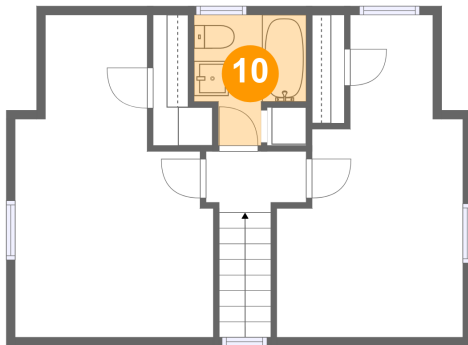
9 Floor 2 - Bedroom



Dimensions: 10'9" x 11'3"
Area: 121 sq. ft
Counted as living area: Yes

Heated: Yes
Finished: Yes
Enclosed: Yes
Contiguous: Yes
Permitted: Yes
Wet space: No
Addition: No
Conversion: No

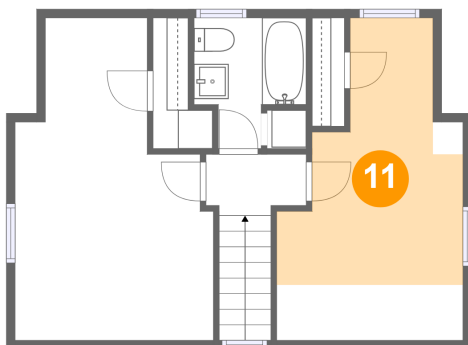
10 Floor 3 - Bath



Dimensions: 6'5" x 7'6"
Area: 38 sq. ft
Counted as living area: Yes

Heated: Yes
Finished: Yes
Enclosed: Yes
Contiguous: Yes
Permitted: Yes
Wet space: Yes
Addition: No
Conversion: No

11 Floor 3 - Bedroom

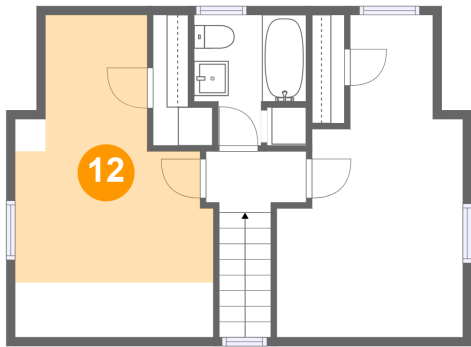


Dimensions: 10'9" x 18'7"
Area: 114 sq. ft
Counted as living area: Yes

Heated: Yes
Finished: Yes
Enclosed: Yes
Contiguous: Yes
Permitted: Yes
Wet space: No
Addition: No
Conversion: No

323 Embury Road, Rochester, Monroe County, New York, United States, 14625

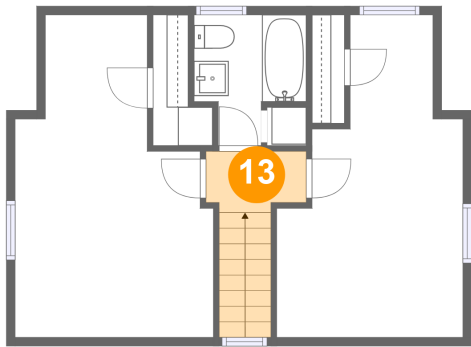
12 Floor 3 - Primary Bedroom



Dimensions: 11'5" x 18'7"
Area: 130 sq. ft
Counted as living area: Yes

Heated: Yes
Finished: Yes
Enclosed: Yes
Contiguous: Yes
Permitted: Yes
Wet space: No
Addition: No
Conversion: No

13 Floor 3 - Hall



Dimensions: 5'9" x 3'6"
Area: 40 sq. ft
Counted as living area: Yes

Heated: Yes
Finished: Yes
Enclosed: Yes
Contiguous: Yes
Permitted: Yes
Wet space: No
Addition: No
Conversion: No