

Home report

620 Sky Lane, Forest Grove, Washington County, Oregon, United States, 97116



Total Area: 2419 sq. ft
Floor 1: 1004 sq. ft, Floor 2: 1415 sq. ft
Excluded: Garage 380 sq. ft, Utility 43 sq. ft, Room 174 sq. ft, Fireplace 3 sq. ft, Outdoor Deck 389 sq. ft, Walls: 182 sq. ft

Property summary

 **2** Floors

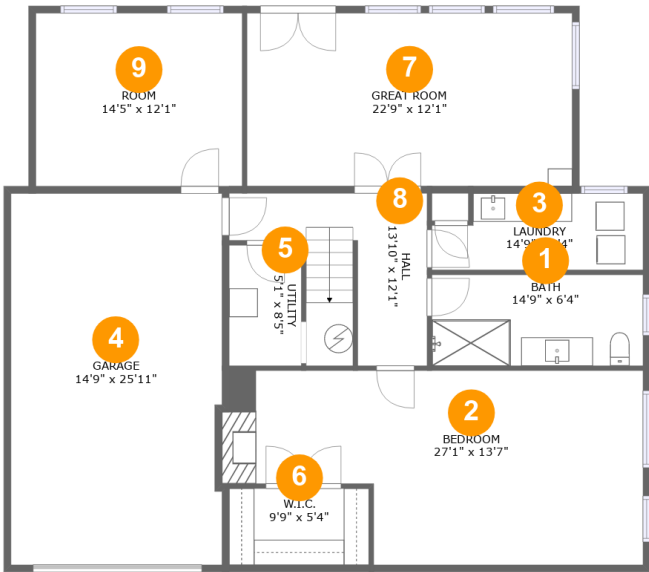
 **4** Bedrooms

 **2** Bathrooms

 **1** Garages

Home report

620 Sky Lane, Forest Grove, Washington County, Oregon, United States, 97116



Room dimensions

Floor 1

Total:1004sqft Excluded: 600sqft

#		Max Dimensions	sqft	Included
1	Bath	14'9" x 6'4"	94 sq. ft	Yes
2	Bedroom	27'1" x 13'7"	338 sq. ft	Yes
3	Laundry	14'9" x 5'4"	73 sq. ft	Yes
4	Garage	14'9" x 25'11"	380 sq. ft	No
5	Utility	5'1" x 8'5"	43 sq. ft	No
6	W.I.C.	9'9" x 5'4"	52 sq. ft	Yes
7	Great Room	22'9" x 12'1"	275 sq. ft	Yes
8	Hall	13'10" x 12'1"	117 sq. ft	Yes
9	Room	14'5" x 12'1"	175 sq. ft	No

Home report

620 Sky Lane, Forest Grove, Washington County, Oregon, United States, 97116



Room dimensions

Floor 2

Total:1415sqft Excluded: 389sqft

#		Max Dimensions	sqft	Included
10	Primary Bedroom	12'9" x 12'0"	153 sq. ft	Yes
11	Foyer	5'3" x 16'3"	60 sq. ft	Yes
12	Hall	15'9" x 3'3"	52 sq. ft	Yes
13	Bedroom	9'8" x 10'0"	96 sq. ft	Yes
14	Deck	11'1" x 36'5"	389 sq. ft	No
15	Kitchen	10'4" x 14'0"	142 sq. ft	Yes
16	Breakfast Nook	11'6" x 6'8"	77 sq. ft	Yes
17	Dining Area	10'3" x 12'3"	126 sq. ft	Yes
18	Bedroom	11'1" x 10'10"	118 sq. ft	Yes
19	Bath	6'11" x 12'0"	75 sq. ft	Yes
20	Living Room	14'9" x 25'11"	349 sq. ft	Yes

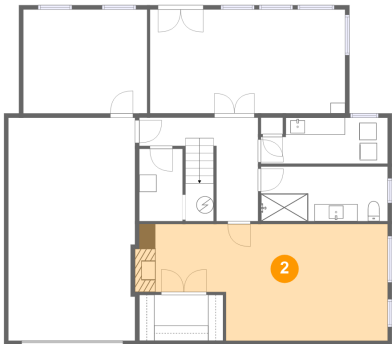
1 Floor 1 - Bath



Max Dimensions: 14'9" x 6'4"
Calculated Area: 94 sq. ft
Included: Yes

Heated: Yes
Finished: Yes
Enclosed: Yes
Contiguous: Yes
Permitted: Yes
Wet space: Yes
Addition: No
Conversion: No

2 Floor 1 - Bedroom



Max Dimensions: 27'1" x 13'7"
Calculated Area: 338 sq. ft
Included: Yes

Heated: Yes
Finished: Yes
Enclosed: Yes
Contiguous: Yes
Permitted: Yes
Wet space: No
Addition: No
Conversion: No

620 Sky Lane, Forest Grove, Washington County, Oregon, United States, 97116

3 Floor 1 - Laundry



Max Dimensions: 14'9" x 5'4"
Calculated Area: 73 sq. ft
Included: Yes

Heated: Yes
Finished: Yes
Enclosed: Yes
Contiguous: Yes
Permitted: Yes
Wet space: No
Addition: No
Conversion: No

4 Floor 1 - Garage



Max Dimensions: 14'9" x 25'11"
Calculated Area: 380 sq. ft
Included: No

Heated: No
Finished: No
Enclosed: Yes
Contiguous: Yes
Permitted: Yes
Wet space: No
Addition: No
Conversion: No

5 Floor 1 - Utility



Max Dimensions: 5'1" x 8'5"
Calculated Area: 43 sq. ft
Included: No

Heated: Yes
Finished: No
Enclosed: Yes
Contiguous: Yes
Permitted: Yes
Wet space: No
Addition: No
Conversion: No

620 Sky Lane, Forest Grove, Washington County, Oregon, United States, 97116

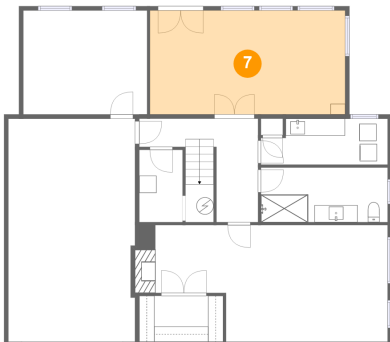
6 Floor 1 - W.I.C.



Max Dimensions: 9'9" x 5'4"
Calculated Area: 52 sq. ft
Included: Yes

Heated: Yes
Finished: Yes
Enclosed: Yes
Contiguous: Yes
Permitted: Yes
Wet space: No
Addition: No
Conversion: No

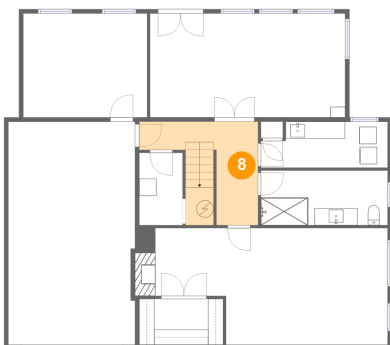
7 Floor 1 - Great Room



Max Dimensions: 22'9" x 12'1"
Calculated Area: 275 sq. ft
Included: Yes

Heated: Yes
Finished: Yes
Enclosed: Yes
Contiguous: Yes
Permitted: Yes
Wet space: No
Addition: No
Conversion: No

8 Floor 1 - Hall

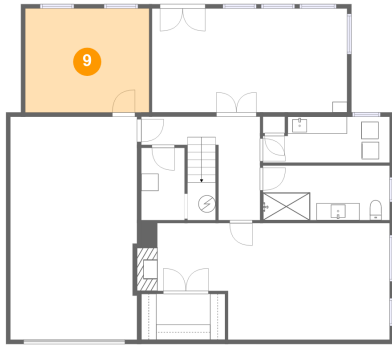


Max Dimensions: 13'10" x 12'1"
Calculated Area: 117 sq. ft
Included: Yes

Heated: Yes
Finished: Yes
Enclosed: Yes
Contiguous: Yes
Permitted: Yes
Wet space: No
Addition: No
Conversion: No

620 Sky Lane, Forest Grove, Washington County, Oregon, United States, 97116

9 Floor 1 - Room



Max Dimensions: 14'5" x 12'1"
Calculated Area: 175 sq. ft
Included: No

Heated: Yes
Finished: No
Enclosed: Yes
Contiguous: Yes
Permitted: Yes
Wet space: No
Addition: No
Conversion: No

10 Floor 2 - Primary Bedroom



Max Dimensions: 12'9" x 12'0"
Calculated Area: 153 sq. ft
Included: Yes

Heated: Yes
Finished: Yes
Enclosed: Yes
Contiguous: Yes
Permitted: Yes
Wet space: No
Addition: No
Conversion: No

11 Floor 2 - Foyer



Max Dimensions: 5'3" x 16'3"
Calculated Area: 60 sq. ft
Included: Yes

Heated: Yes
Finished: Yes
Enclosed: Yes
Contiguous: Yes
Permitted: Yes
Wet space: No
Addition: No
Conversion: No

12 Floor 2 - Hall



Max Dimensions: 15'9" x 3'3"
Calculated Area: 52 sq. ft
Included: Yes

Heated: Yes
Finished: Yes
Enclosed: Yes
Contiguous: Yes
Permitted: Yes
Wet space: No
Addition: No
Conversion: No

13 Floor 2 - Bedroom



Max Dimensions: 9'8" x 10'0"
Calculated Area: 96 sq. ft
Included: Yes

Heated: Yes
Finished: Yes
Enclosed: Yes
Contiguous: Yes
Permitted: Yes
Wet space: No
Addition: No
Conversion: No

14 Floor 2 - Deck

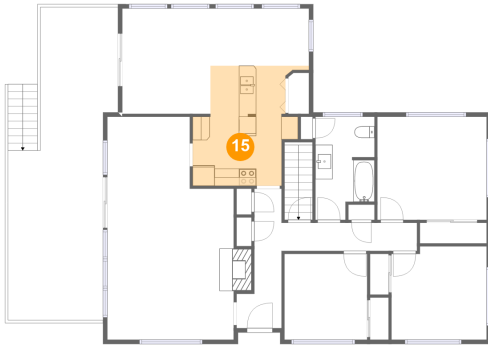


Max Dimensions: 11'1" x 36'5"
Calculated Area: 389 sq. ft
Included: No

Heated: No
Finished: Yes
Enclosed: No
Contiguous: Yes
Permitted: Yes
Wet space: No
Addition: No
Conversion: No

620 Sky Lane, Forest Grove, Washington County, Oregon, United States, 97116

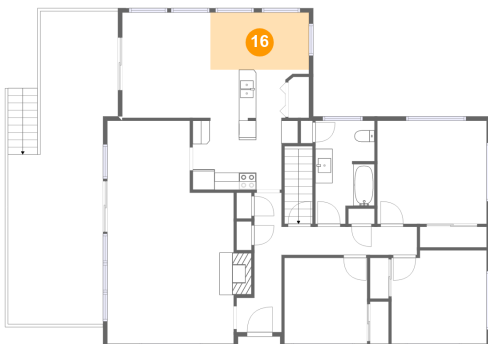
15 Floor 2 - Kitchen



Max Dimensions: 10'4" x 14'0"
Calculated Area: 142 sq. ft
Included: Yes

Heated: Yes
Finished: Yes
Enclosed: Yes
Contiguous: Yes
Permitted: Yes
Wet space: No
Addition: No
Conversion: No

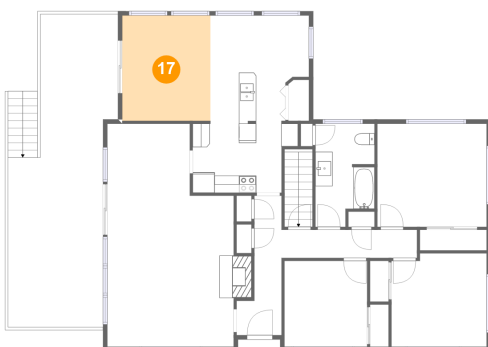
16 Floor 2 - Breakfast Nook



Max Dimensions: 11'6" x 6'8"
Calculated Area: 77 sq. ft
Included: Yes

Heated: Yes
Finished: Yes
Enclosed: Yes
Contiguous: Yes
Permitted: Yes
Wet space: No
Addition: No
Conversion: No

17 Floor 2 - Dining Area



Max Dimensions: 10'3" x 12'3"
Calculated Area: 126 sq. ft
Included: Yes

Heated: Yes
Finished: Yes
Enclosed: Yes
Contiguous: Yes
Permitted: Yes
Wet space: No
Addition: No
Conversion: No

620 Sky Lane, Forest Grove, Washington County, Oregon, United States, 97116

18 Floor 2 - Bedroom



Max Dimensions: 11'1" x 10'10"
Calculated Area: 118 sq. ft
Included: Yes

Heated: Yes
Finished: Yes
Enclosed: Yes
Contiguous: Yes
Permitted: Yes
Wet space: No
Addition: No
Conversion: No

19 Floor 2 - Bath



Max Dimensions: 6'11" x 12'0"
Calculated Area: 75 sq. ft
Included: Yes

Heated: Yes
Finished: Yes
Enclosed: Yes
Contiguous: Yes
Permitted: Yes
Wet space: Yes
Addition: No
Conversion: No

20 Floor 2 - Living Room



Max Dimensions: 14'9" x 25'11"
Calculated Area: 349 sq. ft
Included: Yes

Heated: Yes
Finished: Yes
Enclosed: Yes
Contiguous: Yes
Permitted: Yes
Wet space: No
Addition: No
Conversion: No