

# 1010 Claremont Ct SW, Southern Hills, Roanoke, Roanoke, Virginia, United States, 24014



## Property Summary

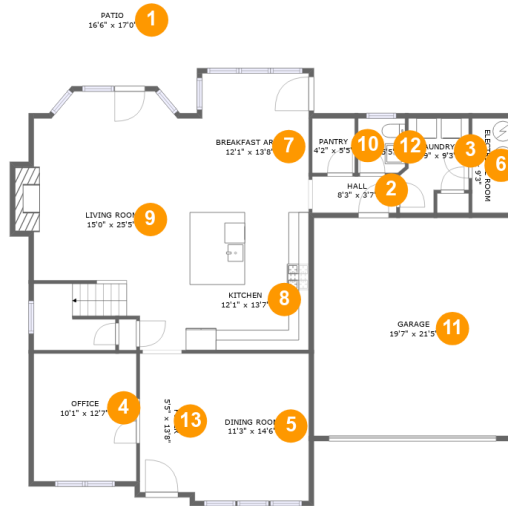
**1** garages    **4** bedrooms    **3** bathrooms    **1** half baths

**3** floors

**3,548** Gross Living Area sqft

**4,615** total sqft

# 1010 Claremont Ct SW, Southern Hills, Roanoke, Roanoke, Virginia, United States, 24014



## Room Dimensions

Floor 1

Total sqft: 2055

Living area: 1299

#	Room name	Dimensions	Area (sqft)	Counted as Living Area
1	Patio	16'6" x 17'0"	254 sq. ft	No
2	Hall	8'3" x 3'7"	30 sq. ft	Yes
3	Laundry	6'9" x 9'3"	51 sq. ft	Yes
4	Office	10'1" x 12'7"	127 sq. ft	Yes
5	Dining Room	11'3" x 14'6"	163 sq. ft	Yes
6	Electrical Room	4'0" x 9'3"	37 sq. ft	No
7	Breakfast Area	12'1" x 13'8"	158 sq. ft	Yes
8	Kitchen	12'1" x 13'7"	164 sq. ft	Yes
9	Living Room	15'0" x 25'5"	369 sq. ft	Yes
10	Pantry	4'2" x 5'5"	23 sq. ft	Yes
11	Garage	19'7" x 21'5"	420 sq. ft	No

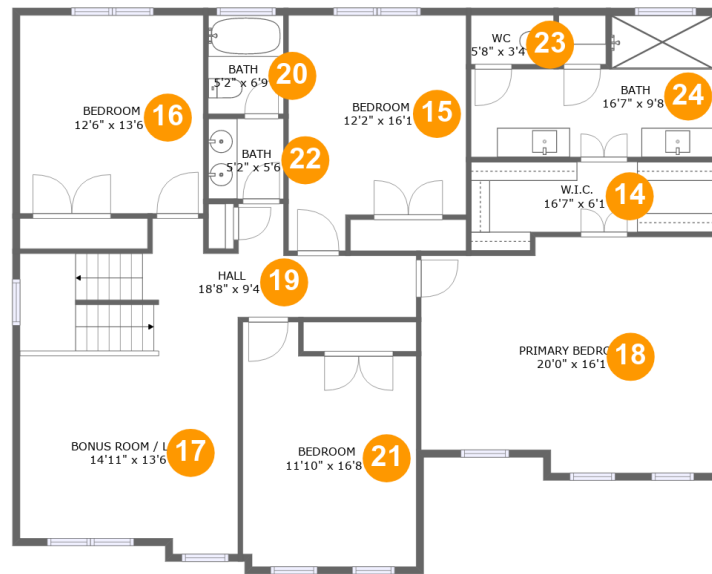
Scan captured on Thu, 18 Jul 2024 23:56:00 GMT

Information is calculated by CubiCasa technology; deemed highly reliable but not guaranteed.

**1010 Claremont Ct SW, Southern Hills, Roanoke,  
Roanoke, Virginia, United States, 24014**

#	Room name	Dimensions	Area (sqft)	Counted as Living Area
12	Wc	4'7" x 5'5"	25 sq. ft	Yes
13	Foyer	5'5" x 13'8"	74 sq. ft	Yes

# 1010 Claremont Ct SW, Southern Hills, Roanoke, Roanoke, Virginia, United States, 24014



## Room Dimensions

Floor 2

Total sqft: 1702

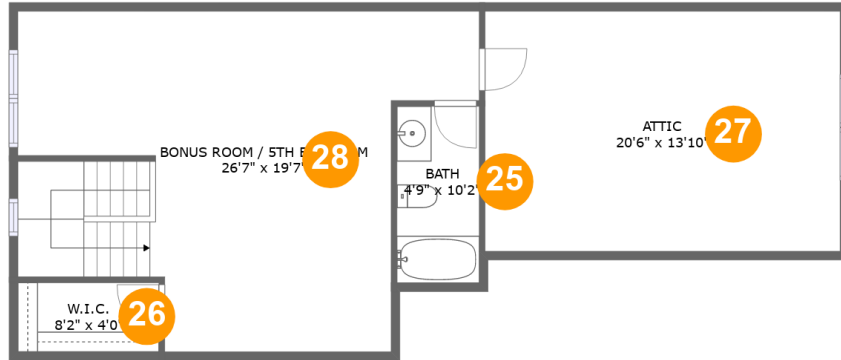
Living area: 1702

#	Room name	Dimensions	Area (sqft)	Counted as Living Area
14	W.i.c.	16'7" x 6'1"	85 sq. ft	Yes
15	Bedroom	12'2" x 16'1"	175 sq. ft	Yes
16	Bedroom	12'6" x 13'6"	169 sq. ft	Yes
17	Bonus Room / Loft	14'11" x 13'6"	190 sq. ft	Yes
18	Primary Bedroom	20'0" x 16'1"	298 sq. ft	Yes
19	Hall	18'8" x 9'4"	174 sq. ft	Yes
20	Bath	5'2" x 6'9"	35 sq. ft	Yes
21	Bedroom	11'10" x 16'8"	178 sq. ft	Yes
22	Bath	5'2" x 5'6"	28 sq. ft	Yes
23	Wc	5'8" x 3'4"	19 sq. ft	Yes
24	Bath	16'7" x 9'8"	125 sq. ft	Yes

Scan captured on Thu, 18 Jul 2024 23:56:00 GMT

Information is calculated by CubiCasa technology; deemed highly reliable but not guaranteed.

**1010 Claremont Ct SW, Southern Hills, Roanoke, Roanoke, Virginia, United States, 24014**



**Room Dimensions**

**Floor 3**

**Total sqft: 858**

**Living area: 547**

#	Room name	Dimensions	Area (sqft)	Counted as Living Area
25	Bath	4'9" x 10'2"	48 sq. ft	Yes
26	W.i.c.	8'2" x 4'0"	32 sq. ft	Yes
27	Attic	20'6" x 13'10"	283 sq. ft	No
28	Bonus Room / 5th Bedroom	26'7" x 19'7"	409 sq. ft	Yes

# 1010 Claremont Ct SW, Southern Hills, Roanoke, Roanoke, Virginia, United States, 24014

## 1 Floor 1 - Patio



Dimensions: 16'6" x 17'0"  
Area: 254 sq. ft  
Counted as Living Area: No

Heated: No  
Finished: Yes  
Enclosed: No  
Contiguous: Yes  
Permitted: Yes  
Wet Space: No  
Addition: No  
Conversion: No

## 2 Floor 1 - Hall



Dimensions: 8'3" x 3'7"  
Area: 30 sq. ft  
Counted as Living Area:  
Yes

Heated: Yes  
Finished: Yes  
Enclosed: Yes  
Contiguous:  
Yes  
Permitted: Yes  
Wet Space: No  
Addition: No  
Conversion: No

# 1010 Claremont Ct SW, Southern Hills, Roanoke, Roanoke, Virginia, United States, 24014

## 3 Floor 1 - Laundry



Dimensions: 6'9" x 9'3"  
Area: 51 sq. ft  
Counted as Living Area:  
Yes

Heated: Yes  
Finished: Yes  
Enclosed: Yes  
Contiguous:  
Yes  
Permitted: Yes  
Wet Space: No  
Addition: No  
Conversion: No

## 4 Floor 1 - Office



Dimensions: 10'1" x 12'7"  
Area: 127 sq. ft  
Counted as Living Area:  
Yes

Heated: Yes  
Finished: Yes  
Enclosed: Yes  
Contiguous:  
Yes  
Permitted: Yes  
Wet Space: No  
Addition: No  
Conversion: No

## 5 Floor 1 - Dining Room



Dimensions: 11'3" x 14'6"  
Area: 163 sq. ft  
Counted as Living Area:  
Yes

Heated: Yes  
Finished: Yes  
Enclosed: Yes  
Contiguous:  
Yes  
Permitted: Yes  
Wet Space: No  
Addition: No  
Conversion: No

# 1010 Claremont Ct SW, Southern Hills, Roanoke, Roanoke, Virginia, United States, 24014

## 6 Floor 1 - Electrical Room



Dimensions: 4'0" x 9'3"  
Area: 37 sq. ft  
Counted as Living Area: No

Heated: No  
Finished: No  
Enclosed: Yes  
Contiguous: Yes  
Permitted: Yes  
Wet Space: No  
Addition: No  
Conversion: No

## 7 Floor 1 - Breakfast Area



Dimensions: 12'1" x 13'8"  
Area: 158 sq. ft  
Counted as Living Area:  
Yes

Heated: Yes  
Finished: Yes  
Enclosed: Yes  
Contiguous:  
Yes  
Permitted: Yes  
Wet Space: No  
Addition: No  
Conversion: No

## 8 Floor 1 - Kitchen



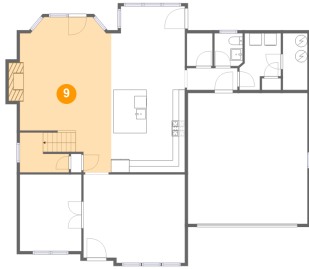
Dimensions: 12'1" x 13'7"  
Area: 164 sq. ft  
Counted as Living Area:  
Yes

Heated: Yes  
Finished: Yes  
Enclosed: Yes  
Contiguous:  
Yes  
Permitted: Yes  
Wet Space: No  
Addition: No  
Conversion: No



# 1010 Claremont Ct SW, Southern Hills, Roanoke, Roanoke, Virginia, United States, 24014

## 9 Floor 1 - Living Room



Dimensions: 15'0" x 25'5"  
Area: 369 sq. ft  
Counted as Living Area:  
Yes

Heated: Yes  
Finished: Yes  
Enclosed: Yes  
Contiguous:  
Yes  
Permitted: Yes  
Wet Space: No  
Addition: No  
Conversion: No

## 10 Floor 1 - Pantry



Dimensions: 4'2" x 5'5"  
Area: 23 sq. ft  
Counted as Living Area:  
Yes

Heated: Yes  
Finished: Yes  
Enclosed: Yes  
Contiguous:  
Yes  
Permitted: Yes  
Wet Space: No  
Addition: No  
Conversion: No

## 11 Floor 1 - Garage



Dimensions: 19'7" x 21'5"  
Area: 420 sq. ft  
Counted as Living Area: No

Heated: No  
Finished: No  
Enclosed: Yes  
Contiguous: Yes  
Permitted: Yes  
Wet Space: No  
Addition: No  
Conversion: No

**1010 Claremont Ct SW, Southern Hills, Roanoke,  
Roanoke, Virginia, United States, 24014****12 Floor 1 - Wc**

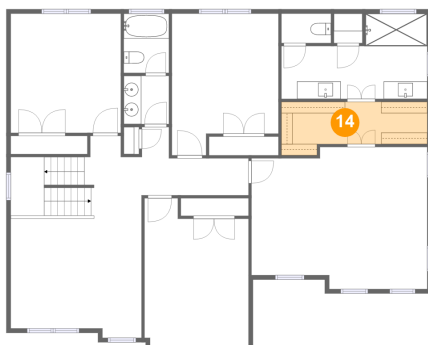
Dimensions: 4'7" x 5'5"  
Area: 25 sq. ft  
Counted as Living Area:  
Yes

Heated: Yes  
Finished: Yes  
Enclosed: Yes  
Contiguous:  
Yes  
Permitted: Yes  
Wet Space: Yes  
Addition: No  
Conversion: No

**13 Floor 1 - Foyer**

Dimensions: 5'5" x 13'8"  
Area: 74 sq. ft  
Counted as Living Area:  
Yes

Heated: Yes  
Finished: Yes  
Enclosed: Yes  
Contiguous:  
Yes  
Permitted: Yes  
Wet Space: No  
Addition: No  
Conversion: No

**14 Floor 2 - W.i.c.**

Dimensions: 16'7" x 6'1"  
Area: 85 sq. ft  
Counted as Living Area:  
Yes

Heated: Yes  
Finished: Yes  
Enclosed: Yes  
Contiguous:  
Yes  
Permitted: Yes  
Wet Space: No  
Addition: No  
Conversion: No

# 1010 Claremont Ct SW, Southern Hills, Roanoke, Roanoke, Virginia, United States, 24014

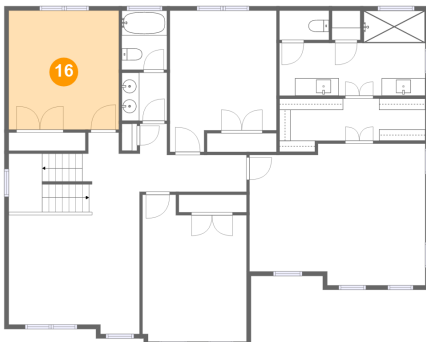
## 15 Floor 2 - Bedroom



Dimensions: 12'2" x 16'1"  
Area: 175 sq. ft  
Counted as Living Area:  
Yes

Heated: Yes  
Finished: Yes  
Enclosed: Yes  
Contiguous:  
Yes  
Permitted: Yes  
Wet Space: No  
Addition: No  
Conversion: No

## 16 Floor 2 - Bedroom



Dimensions: 12'6" x 13'6"  
Area: 169 sq. ft  
Counted as Living Area:  
Yes

Heated: Yes  
Finished: Yes  
Enclosed: Yes  
Contiguous:  
Yes  
Permitted: Yes  
Wet Space: No  
Addition: No  
Conversion: No

## 17 Floor 2 - Bonus Room / Loft



Dimensions: 14'11" x 13'6"  
Area: 190 sq. ft  
Counted as Living Area:  
Yes

Heated: Yes  
Finished: Yes  
Enclosed: Yes  
Contiguous:  
Yes  
Permitted: Yes  
Wet Space: No  
Addition: No  
Conversion: No

# 1010 Claremont Ct SW, Southern Hills, Roanoke, Roanoke, Virginia, United States, 24014

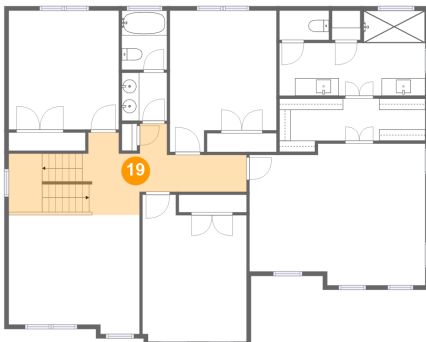
## 18 Floor 2 - Primary Bedroom



Dimensions: 20'0" x 16'1"  
Area: 298 sq. ft  
Counted as Living Area:  
Yes

Heated: Yes  
Finished: Yes  
Enclosed: Yes  
Contiguous:  
Yes  
Permitted: Yes  
Wet Space: No  
Addition: No  
Conversion: No

## 19 Floor 2 - Hall



Dimensions: 18'8" x 9'4"  
Area: 174 sq. ft  
Counted as Living Area:  
Yes

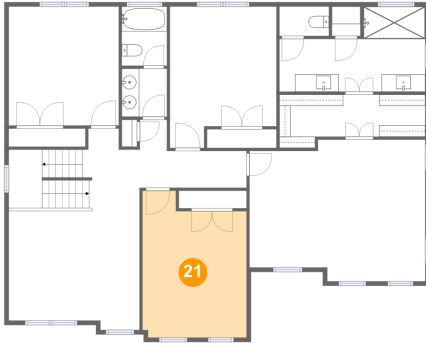
Heated: Yes  
Finished: Yes  
Enclosed: Yes  
Contiguous:  
Yes  
Permitted: Yes  
Wet Space: No  
Addition: No  
Conversion: No

## 20 Floor 2 - Bath



Dimensions: 5'2" x 6'9"  
Area: 35 sq. ft  
Counted as Living Area:  
Yes

Heated: Yes  
Finished: Yes  
Enclosed: Yes  
Contiguous:  
Yes  
Permitted: Yes  
Wet Space: Yes  
Addition: No  
Conversion: No

**1010 Claremont Ct SW, Southern Hills, Roanoke,  
Roanoke, Virginia, United States, 24014****21 Floor 2 - Bedroom**

**Dimensions:** 11'10" x 16'8"  
**Area:** 178 sq. ft  
**Counted as Living Area:**  
Yes

**Heated:** Yes  
**Finished:** Yes  
**Enclosed:** Yes  
**Contiguous:**  
Yes  
**Permitted:** Yes  
**Wet Space:** No  
**Addition:** No  
**Conversion:** No

**22 Floor 2 - Bath**

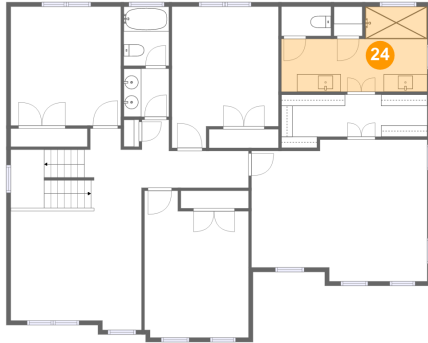
**Dimensions:** 5'2" x 5'6"  
**Area:** 28 sq. ft  
**Counted as Living Area:**  
Yes

**Heated:** Yes  
**Finished:** Yes  
**Enclosed:** Yes  
**Contiguous:**  
Yes  
**Permitted:** Yes  
**Wet Space:** Yes  
**Addition:** No  
**Conversion:** No

**23 Floor 2 - Wc**

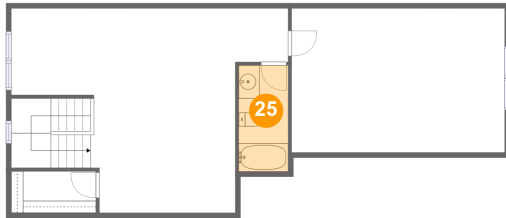
**Dimensions:** 5'8" x 3'4"  
**Area:** 19 sq. ft  
**Counted as Living Area:**  
Yes

**Heated:** Yes  
**Finished:** Yes  
**Enclosed:** Yes  
**Contiguous:**  
Yes  
**Permitted:** Yes  
**Wet Space:** Yes  
**Addition:** No  
**Conversion:** No

**1010 Claremont Ct SW, Southern Hills, Roanoke,  
Roanoke, Virginia, United States, 24014****24 Floor 2 - Bath**

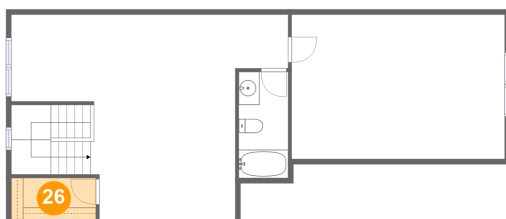
Dimensions: 16'7" x 9'8"  
Area: 125 sq. ft  
Counted as Living Area:  
Yes

Heated: Yes  
Finished: Yes  
Enclosed: Yes  
Contiguous:  
Yes  
Permitted: Yes  
Wet Space: Yes  
Addition: No  
Conversion: No

**25 Floor 3 - Bath**

Dimensions: 4'9" x 10'2"  
Area: 48 sq. ft  
Counted as Living Area:  
Yes

Heated: Yes  
Finished: Yes  
Enclosed: Yes  
Contiguous:  
Yes  
Permitted: Yes  
Wet Space: Yes  
Addition: No  
Conversion: No

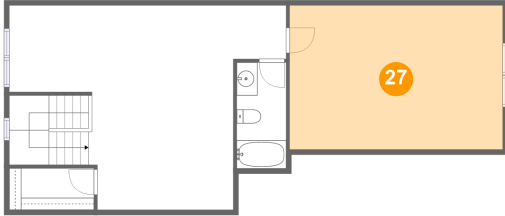
**26 Floor 3 - W.i.c.**

Dimensions: 8'2" x 4'0"  
Area: 32 sq. ft  
Counted as Living Area:  
Yes

Heated: Yes  
Finished: Yes  
Enclosed: Yes  
Contiguous:  
Yes  
Permitted: Yes  
Wet Space: No  
Addition: No  
Conversion: No

**1010 Claremont Ct SW, Southern Hills, Roanoke,  
Roanoke, Virginia, United States, 24014**

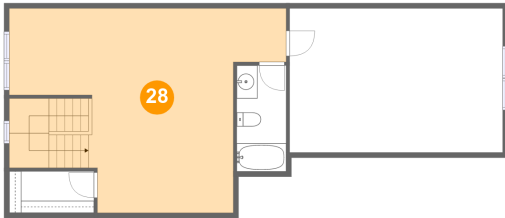
**27 Floor 3 - Attic**



Dimensions: 20'6" x 13'10"  
Area: 283 sq. ft  
Counted as Living Area: No

Heated: No  
Finished: No  
Enclosed: Yes  
Contiguous: Yes  
Permitted: Yes  
Wet Space: No  
Addition: No  
Conversion: No

**28 Floor 3 - Bonus Room / 5th Bedroom**



Dimensions: 26'7" x 19'7"  
Area: 409 sq. ft  
Counted as Living Area:  
Yes

Heated: Yes  
Finished: Yes  
Enclosed: Yes  
Contiguous:  
Yes  
Permitted: Yes  
Wet Space: No  
Addition: No  
Conversion: No