



Home report


403 E 3rd St, Joseph, OR, US




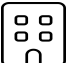
Property summary


 **1** Garages


 **3** Bedrooms

 **2** Bathrooms

 **0** Half baths

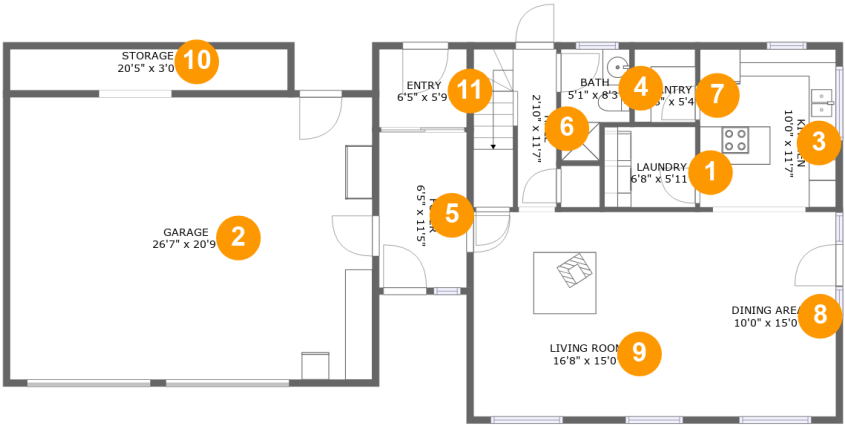
 **3** Floors

 **1,674** Gross living area sqft

 **2,691** Total sqft

Home report

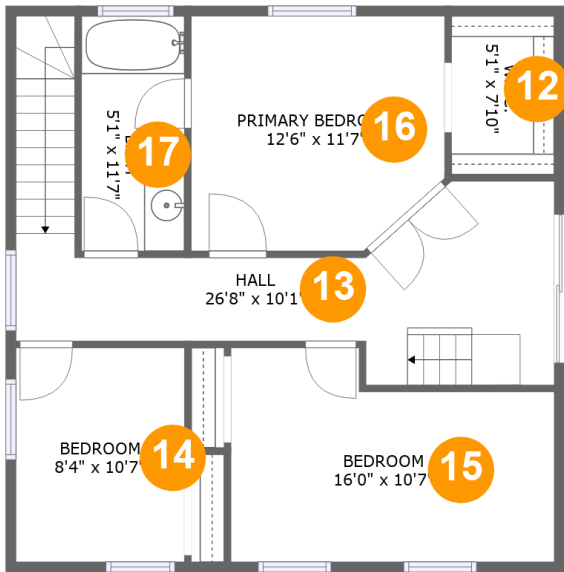
403 E 3rd St,Joseph,OR,US



Room dimensions

Floor 1 Total sqft: 1570    Living area: 901

#		Dimensions	sqft	Counted as living area
1	Laundry	6'8" x 5'11"	39 sq. ft	Yes
2	Garage	26'7" x 20'9"	552 sq. ft	No
3	Kitchen	10'0" x 11'7"	116 sq. ft	Yes
4	Bath	5'1" x 8'3"	35 sq. ft	Yes
5	Foyer	6'5" x 11'5"	74 sq. ft	Yes
6	Hall	2'10" x 11'7"	69 sq. ft	Yes
7	Pantry	4'6" x 5'4"	24 sq. ft	Yes
8	Dining Area	10'0" x 15'0"	150 sq. ft	Yes
9	Living Room	16'8" x 15'0"	250 sq. ft	Yes
10	Storage	20'5" x 3'0"	62 sq. ft	No
11	Entry	6'5" x 5'9"	37 sq. ft	Yes



Room dimensions

Floor 2 Total sqft: 773 Living area: 773

#		Dimensions	sqft	Counted as living area
12	W.I.C.	5'1" x 7'10"	40 sq. ft	Yes
13	Hall	26'8" x 10'1"	192 sq. ft	Yes
14	Bedroom	8'4" x 10'7"	88 sq. ft	Yes
15	Bedroom	16'0" x 10'7"	148 sq. ft	Yes
16	Primary Bedroom	12'6" x 11'7"	138 sq. ft	Yes
17	Bath	5'1" x 11'7"	59 sq. ft	Yes

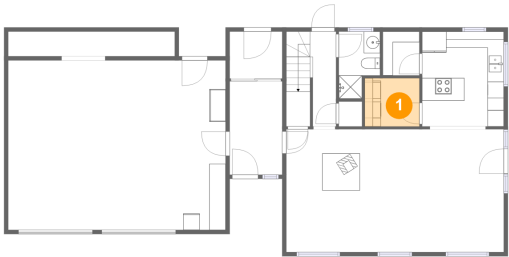


Room dimensions

Floor 3 Total sqft: 348    Living area: 0

#		Dimensions	sqft	Counted as living area
18	Open To Below	9'4" x 10'1"	65 sq. ft	No
19	Open To Below	8'4" x 4'1"	34 sq. ft	No
20	Room	12'6" x 17'1"	162 sq. ft	No

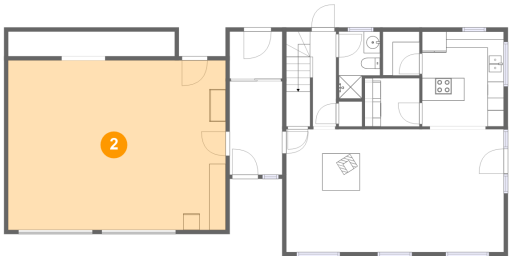
1 Floor 1 - Laundry



Dimensions: 6'8" x 5'11"  
Area: 39 sq. ft  
Counted as living area: Yes

Heated: Yes  
Finished: Yes  
Enclosed: Yes  
Contiguous: Yes  
Permitted: Yes  
Wet space: No  
Addition: No  
Conversion: No

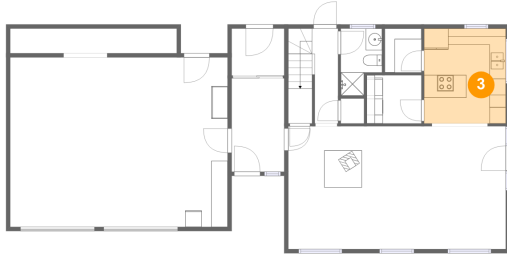
2 Floor 1 - Garage



Dimensions: 26'7" x 20'9"  
Area: 552 sq. ft  
Counted as living area: No

Heated: No  
Finished: No  
Enclosed: Yes  
Contiguous: Yes  
Permitted: Yes  
Wet space: No  
Addition: No  
Conversion: No

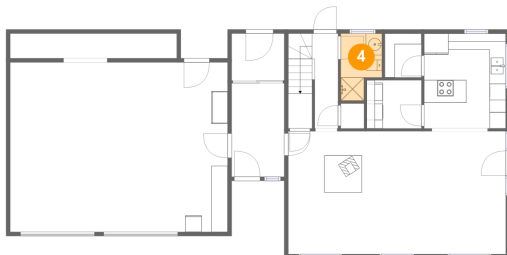
### 3 Floor 1 - Kitchen



Dimensions: 10'0" x 11'7"  
Area: 116 sq. ft  
Counted as living area: Yes

Heated: Yes  
Finished: Yes  
Enclosed: Yes  
Contiguous: Yes  
Permitted: Yes  
Wet space: No  
Addition: No  
Conversion: No

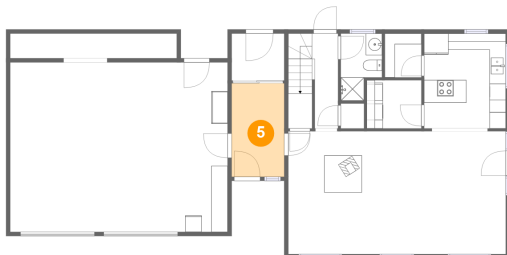
### 4 Floor 1 - Bath



Dimensions: 5'1" x 8'3"  
Area: 35 sq. ft  
Counted as living area: Yes

Heated: Yes  
Finished: Yes  
Enclosed: Yes  
Contiguous: Yes  
Permitted: Yes  
Wet space: Yes  
Addition: No  
Conversion: No

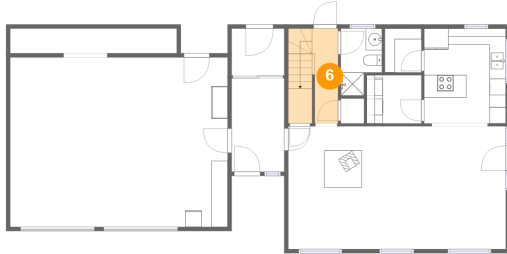
### 5 Floor 1 - Foyer



Dimensions: 6'5" x 11'5"  
Area: 74 sq. ft  
Counted as living area: Yes

Heated: Yes  
Finished: Yes  
Enclosed: Yes  
Contiguous: Yes  
Permitted: Yes  
Wet space: No  
Addition: No  
Conversion: No

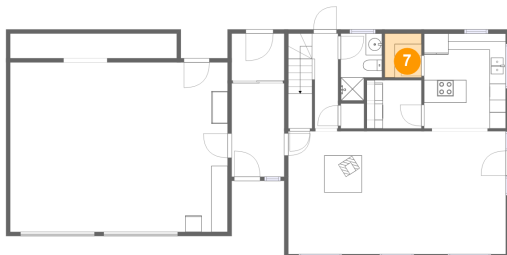
## 6 Floor 1 - Hall



Dimensions: 2'10" x 11'7"  
Area: 69 sq. ft  
Counted as living area: Yes

Heated: Yes  
Finished: Yes  
Enclosed: Yes  
Contiguous: Yes  
Permitted: Yes  
Wet space: No  
Addition: No  
Conversion: No

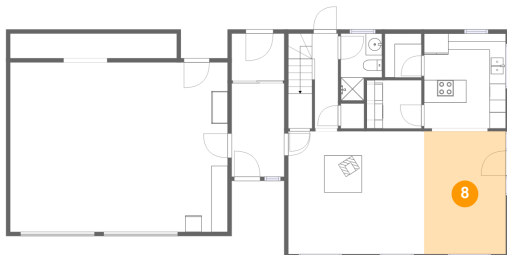
## 7 Floor 1 - Pantry



Dimensions: 4'6" x 5'4"  
Area: 24 sq. ft  
Counted as living area: Yes

Heated: Yes  
Finished: Yes  
Enclosed: Yes  
Contiguous: Yes  
Permitted: Yes  
Wet space: No  
Addition: No  
Conversion: No

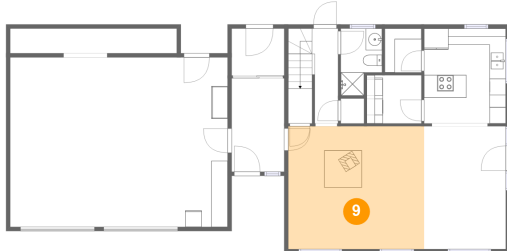
## 8 Floor 1 - Dining Area



Dimensions: 10'0" x 15'0"  
Area: 150 sq. ft  
Counted as living area: Yes

Heated: Yes  
Finished: Yes  
Enclosed: Yes  
Contiguous: Yes  
Permitted: Yes  
Wet space: No  
Addition: No  
Conversion: No

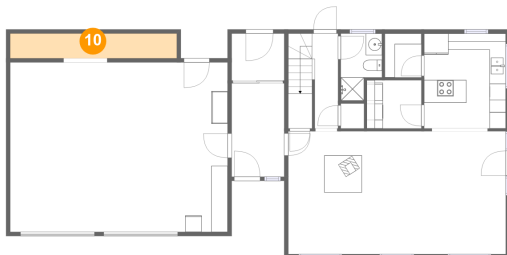
## 9 Floor 1 - Living Room



Dimensions: 16'8" x 15'0"  
Area: 250 sq. ft  
Counted as living area: Yes

Heated: Yes  
Finished: Yes  
Enclosed: Yes  
Contiguous: Yes  
Permitted: Yes  
Wet space: No  
Addition: No  
Conversion: No

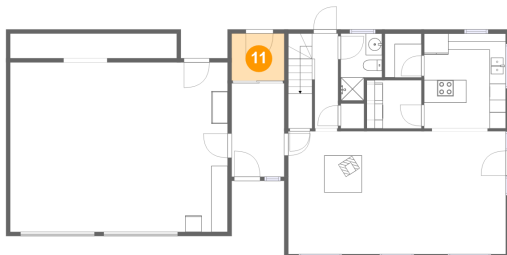
## 10 Floor 1 - Storage



Dimensions: 20'5" x 3'0"  
Area: 62 sq. ft  
Counted as living area: No

Heated: No  
Finished: No  
Enclosed: No  
Contiguous: Yes  
Permitted: Yes  
Wet space: No  
Addition: No  
Conversion: No

## 11 Floor 1 - Entry

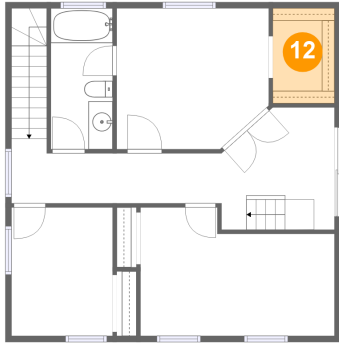


Dimensions: 6'5" x 5'9"  
Area: 37 sq. ft  
Counted as living area: Yes

Heated: Yes  
Finished: Yes  
Enclosed: Yes  
Contiguous: Yes  
Permitted: Yes  
Wet space: No  
Addition: No  
Conversion: No



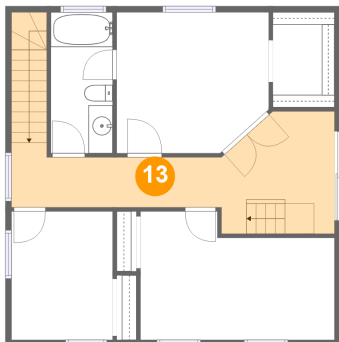
## 12 Floor 2 - W.I.C.



Dimensions: 5'1" x 7'10"  
Area: 40 sq. ft  
Counted as living area: Yes

Heated: Yes  
Finished: Yes  
Enclosed: Yes  
Contiguous: Yes  
Permitted: Yes  
Wet space: No  
Addition: No  
Conversion: No

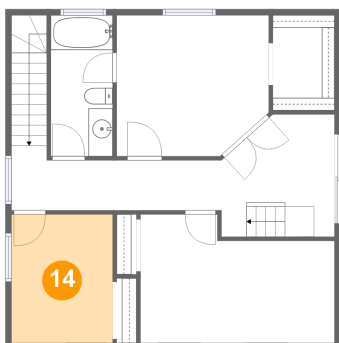
## 13 Floor 2 - Hall



Dimensions: 26'8" x 10'1"  
Area: 192 sq. ft  
Counted as living area: Yes

Heated: Yes  
Finished: Yes  
Enclosed: Yes  
Contiguous: Yes  
Permitted: Yes  
Wet space: No  
Addition: No  
Conversion: No

## 14 Floor 2 - Bedroom



Dimensions: 8'4" x 10'7"  
Area: 88 sq. ft  
Counted as living area: Yes

Heated: Yes  
Finished: Yes  
Enclosed: Yes  
Contiguous: Yes  
Permitted: Yes  
Wet space: No  
Addition: No  
Conversion: No

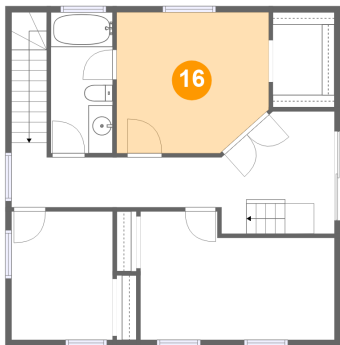
15 Floor 2 - Bedroom



Dimensions: 16'0" x 10'7"  
Area: 148 sq. ft  
Counted as living area: Yes

Heated: Yes  
Finished: Yes  
Enclosed: Yes  
Contiguous: Yes  
Permitted: Yes  
Wet space: No  
Addition: No  
Conversion: No

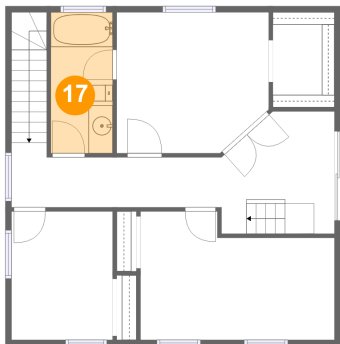
16 Floor 2 - Primary Bedroom



Dimensions: 12'6" x 11'7"  
Area: 138 sq. ft  
Counted as living area: Yes

Heated: Yes  
Finished: Yes  
Enclosed: Yes  
Contiguous: Yes  
Permitted: Yes  
Wet space: No  
Addition: No  
Conversion: No

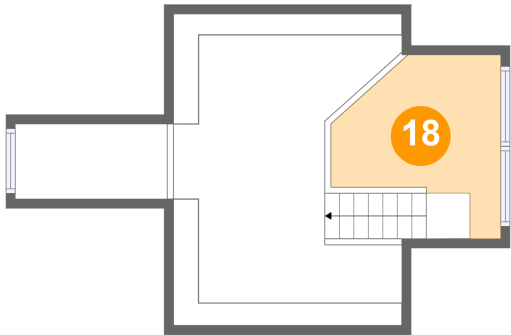
17 Floor 2 - Bath



Dimensions: 5'1" x 11'7"  
Area: 59 sq. ft  
Counted as living area: Yes

Heated: Yes  
Finished: Yes  
Enclosed: Yes  
Contiguous: Yes  
Permitted: Yes  
Wet space: Yes  
Addition: No  
Conversion: No

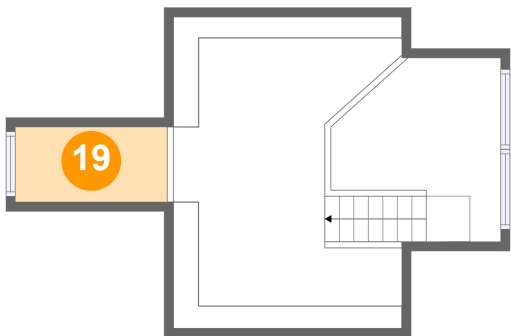
18 Floor 3 - Open To Below



Dimensions: 9'4" x 10'1"  
Area: 65 sq. ft  
Counted as living area: No

Heated: No  
Finished: No  
Enclosed: No  
Contiguous: Yes  
Permitted: No  
Wet space: No  
Addition: No  
Conversion: No

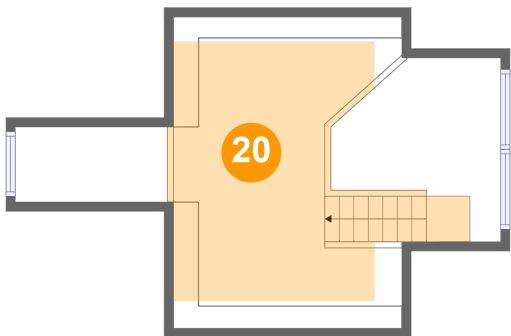
19 Floor 3 - Open To Below



Dimensions: 8'4" x 4'1"  
Area: 34 sq. ft  
Counted as living area: No

Heated: No  
Finished: No  
Enclosed: No  
Contiguous: Yes  
Permitted: No  
Wet space: No  
Addition: No  
Conversion: No

20 Floor 3 - Room



Dimensions: 12'6" x 17'1"  
Area: 162 sq. ft  
Counted as living area: No

Heated: Yes  
Finished: Yes  
Enclosed: Yes  
Contiguous: No  
Permitted: Yes  
Wet space: No  
Addition: No  
Conversion: No