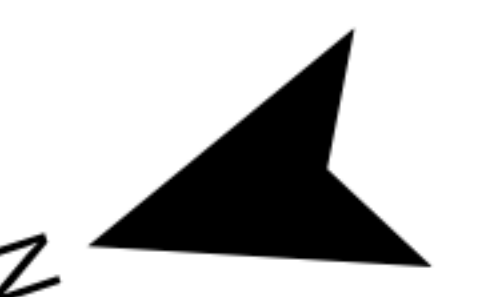
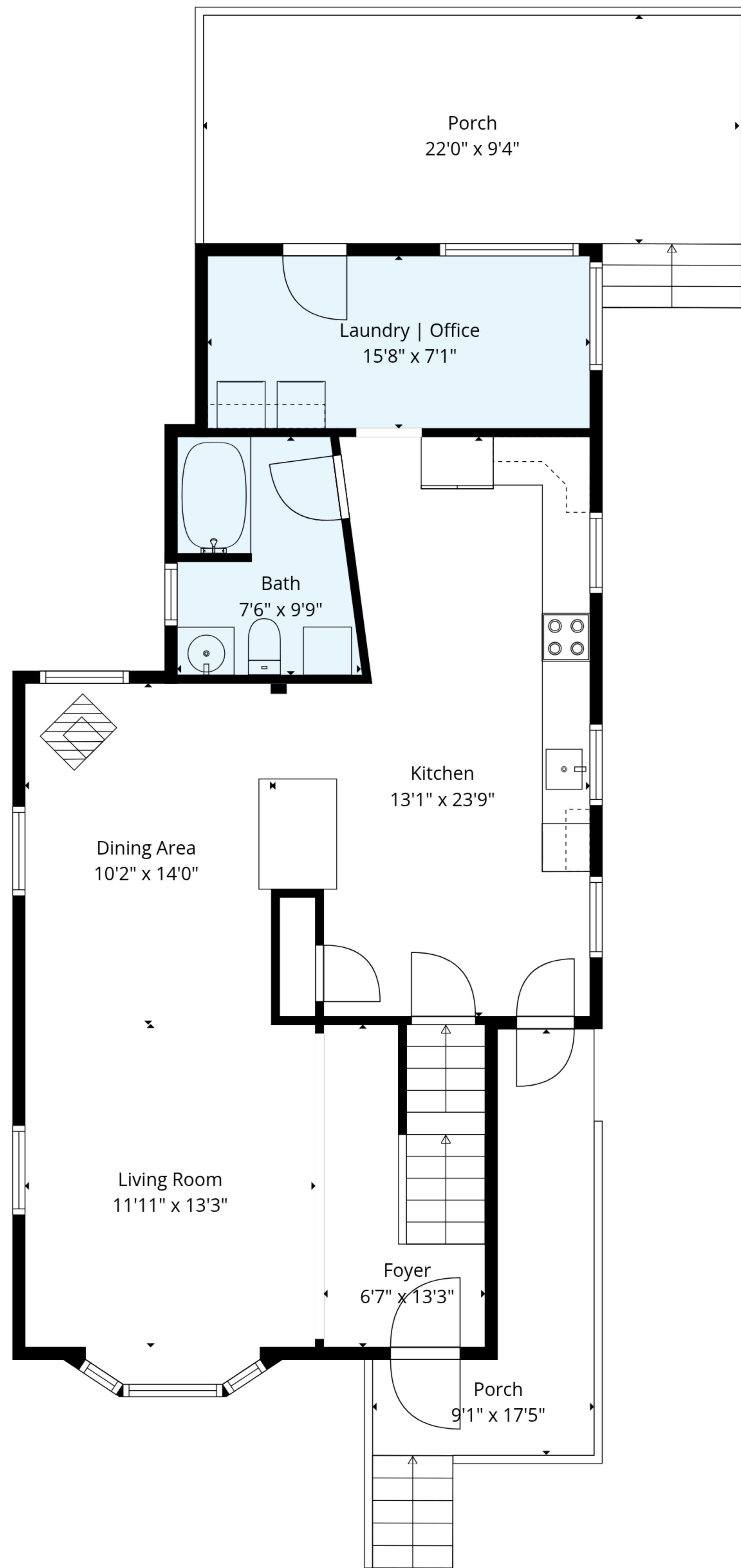


**TOTAL: 1625 sq. ft**

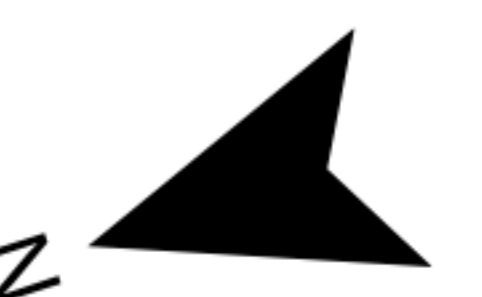
Basement: 0 sq. ft, 1st floor: 859 sq. ft, 2nd floor: 513 sq. ft, 3rd floor: 253 sq. ft  
EXCLUDED AREAS: BASEMENT: 581 sq. ft, PORCH: 326 sq. ft, BAY WINDOW: 10 sq. ft,  
LOW CEILING: 64 sq. ft, WALLS: 209 sq. ft

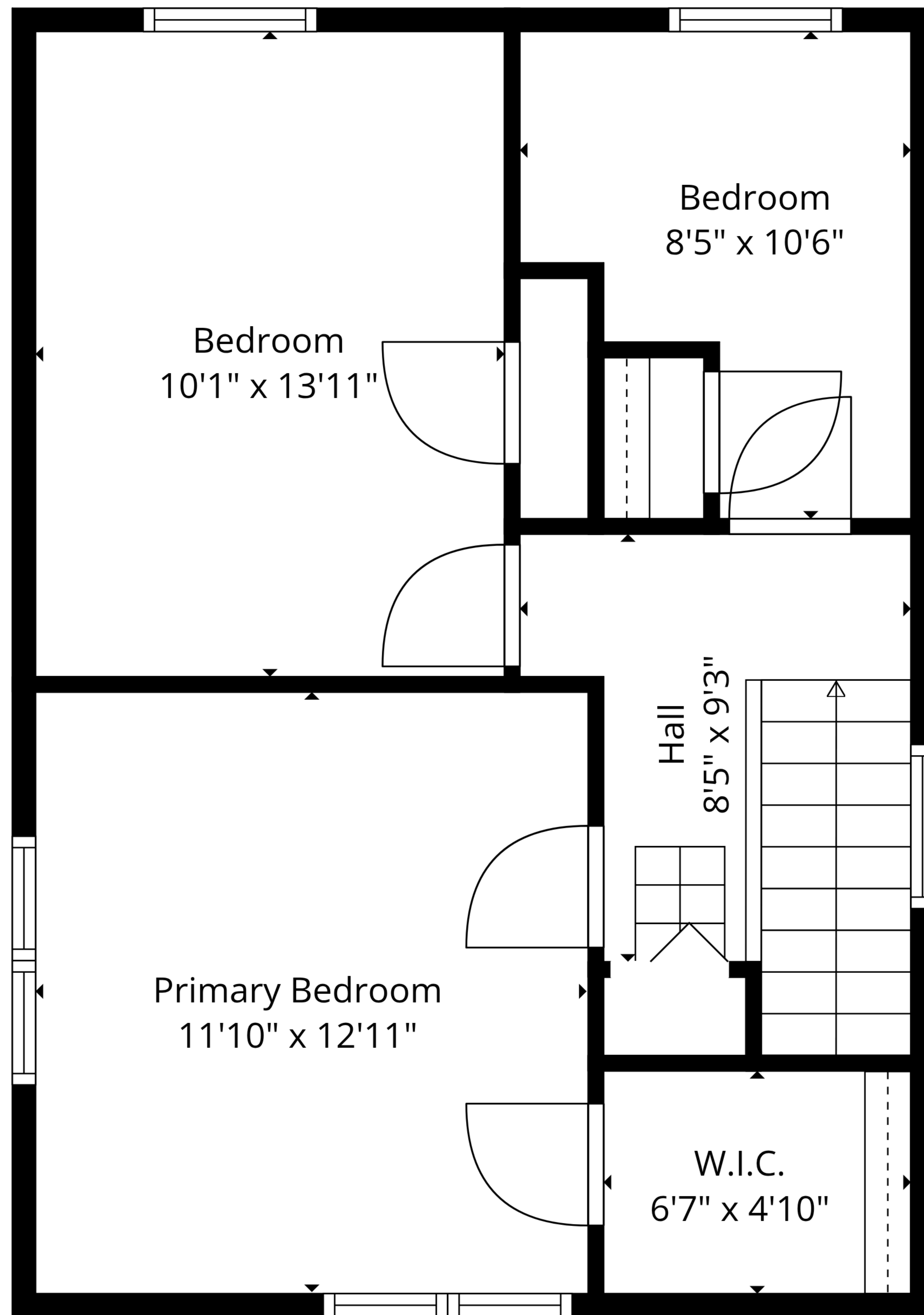




**TOTAL: 1625 sq. ft**

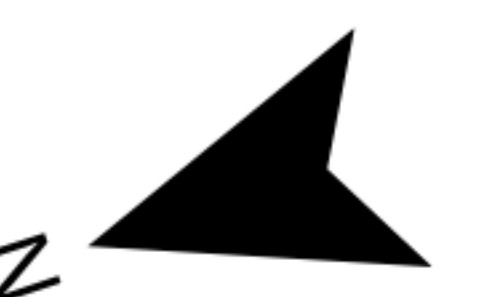
Basement: 0 sq. ft, 1st floor: 859 sq. ft, 2nd floor: 513 sq. ft, 3rd floor: 253 sq. ft  
 EXCLUDED AREAS: BASEMENT: 581 sq. ft, PORCH: 326 sq. ft, BAY WINDOW: 10 sq. ft,  
 LOW CEILING: 64 sq. ft, WALLS: 209 sq. ft

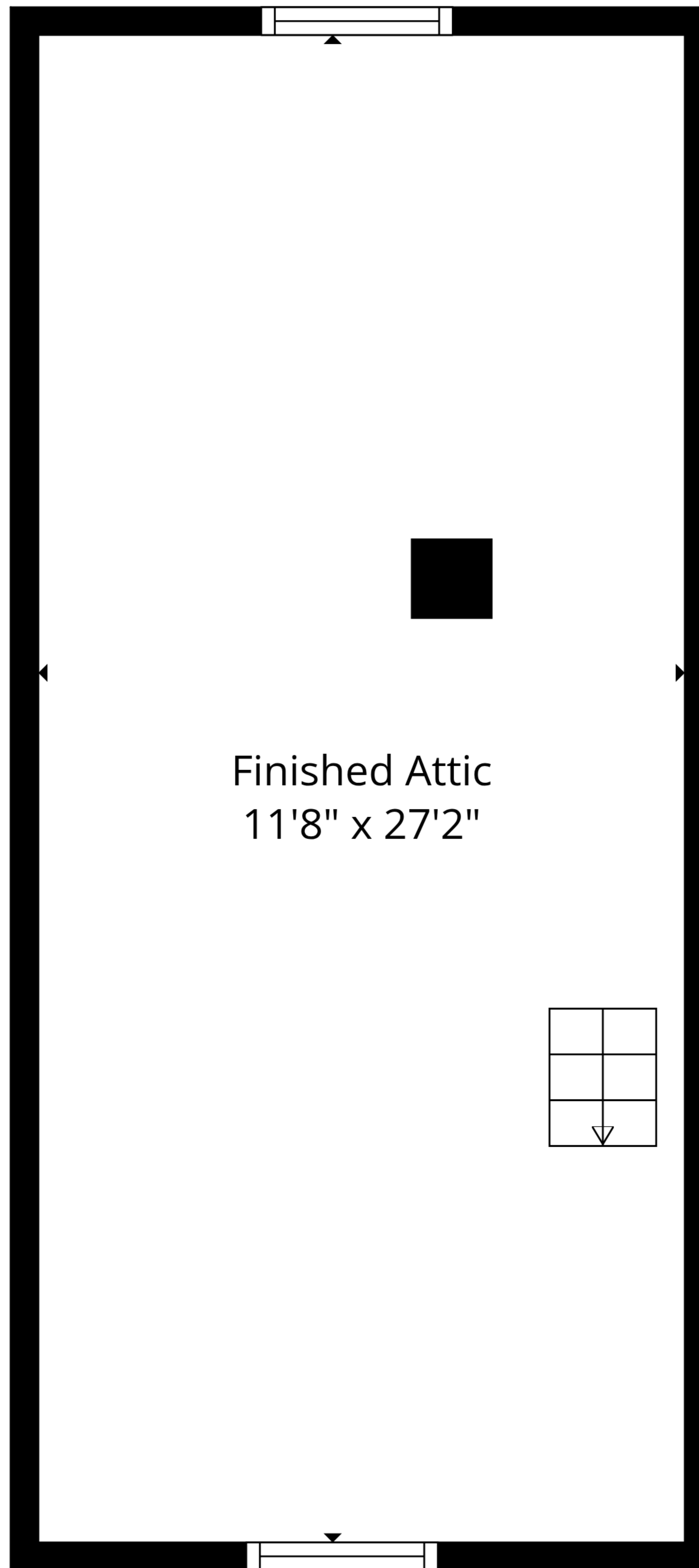




**TOTAL: 1625 sq. ft**

Basement: 0 sq. ft, 1st floor: 859 sq. ft, 2nd floor: 513 sq. ft, 3rd floor: 253 sq. ft  
 EXCLUDED AREAS: BASEMENT: 581 sq. ft, PORCH: 326 sq. ft, BAY WINDOW: 10 sq. ft,  
 LOW CEILING: 64 sq. ft, WALLS: 209 sq. ft

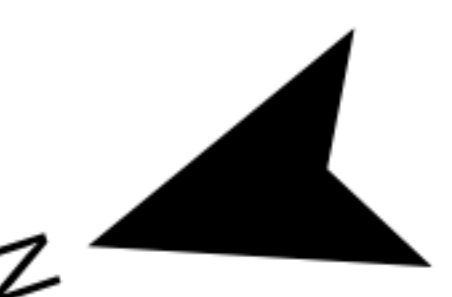




Finished Attic  
11'8" x 27'2"

**TOTAL: 1625 sq. ft**

Basement: 0 sq. ft, 1st floor: 859 sq. ft, 2nd floor: 513 sq. ft, 3rd floor: 253 sq. ft  
EXCLUDED AREAS: BASEMENT: 581 sq. ft, PORCH: 326 sq. ft, BAY WINDOW: 10 sq. ft,  
LOW CEILING: 64 sq. ft, WALLS: 209 sq. ft





Basement

1st Floor

2nd Floor

3rd Floor

**TOTAL: 1625 sq. ft**

Basement: 0 sq. ft, 1st floor: 859 sq. ft, 2nd floor: 513 sq. ft, 3rd floor: 253 sq. ft  
 EXCLUDED AREAS: BASEMENT: 581 sq. ft, PORCH: 326 sq. ft, BAY WINDOW: 10 sq. ft,  
 LOW CEILING: 64 sq. ft, WALLS: 209 sq. ft

