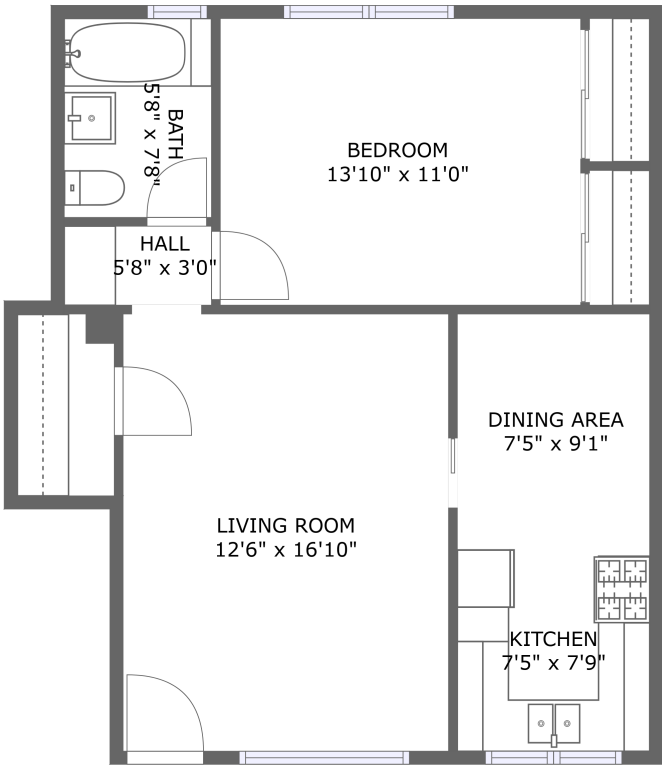


1239 S La Cienega Blvd #9, Los Angeles, CA, US



FLOOR 1

Total GLA: 679 sq. ft

Floor 1: 679 sq. ft

Excluded:

Property summary

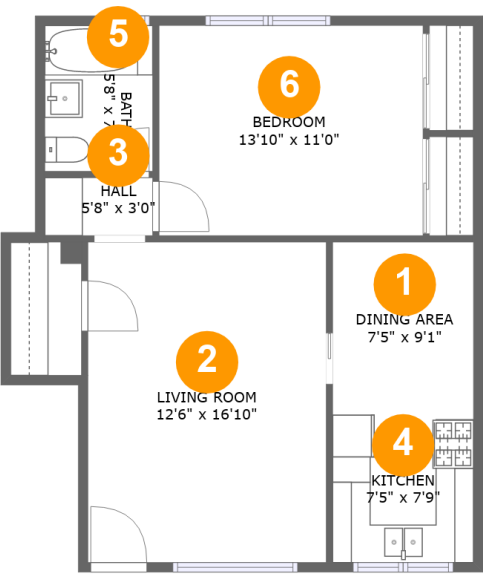
 1 Floors

 1 Bedrooms

 1 Bathrooms

Home report

1239 S La Cienega Blvd #9,Los Angeles,CA,US

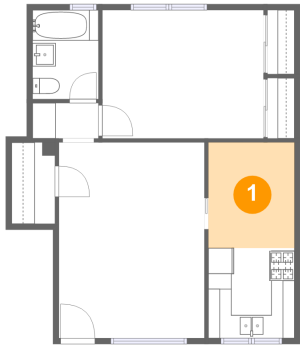


Room dimensions

Floor 1 Total:679sqft Excluded: 0sqft

#		Max Dimensions	sqft	Included
1	Dining Area	7'5" x 9'1"	67 sq. ft	Yes
2	Living Room	12'6" x 16'10"	211 sq. ft	Yes
3	Hall	5'8" x 3'0"	17 sq. ft	Yes
4	Kitchen	7'5" x 7'9"	57 sq. ft	Yes
5	Bath	5'8" x 7'8"	43 sq. ft	Yes
6	Bedroom	13'10" x 11'0"	153 sq. ft	Yes

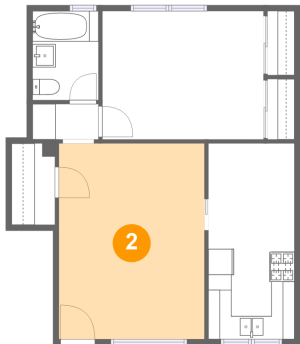
1 Floor 1 - Dining Area



Max Dimensions: 7'5" x 9'1"  
Calculated Area: 67 sq. ft  
Included: Yes

Heated: Yes  
Finished: Yes  
Enclosed: Yes  
Contiguous: Yes  
Permitted: Yes  
Wet space: No  
Addition: No  
Conversion: No

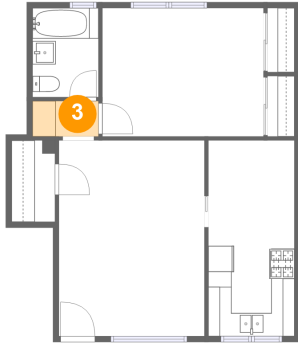
2 Floor 1 - Living Room



Max Dimensions: 12'6" x 16'10"  
Calculated Area: 211 sq. ft  
Included: Yes

Heated: Yes  
Finished: Yes  
Enclosed: Yes  
Contiguous: Yes  
Permitted: Yes  
Wet space: No  
Addition: No  
Conversion: No

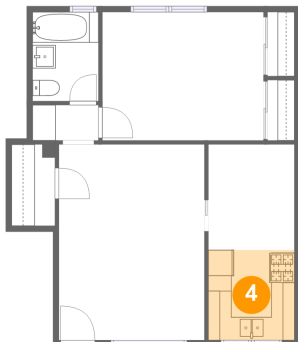
### 3 Floor 1 - Hall



Max Dimensions: 5'8" x 3'0"  
Calculated Area: 17 sq. ft  
Included: Yes

Heated: Yes  
Finished: Yes  
Enclosed: Yes  
Contiguous: Yes  
Permitted: Yes  
Wet space: No  
Addition: No  
Conversion: No

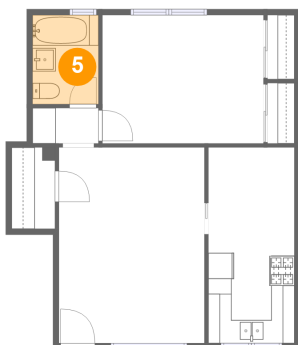
### 4 Floor 1 - Kitchen



Max Dimensions: 7'5" x 7'9"  
Calculated Area: 57 sq. ft  
Included: Yes

Heated: Yes  
Finished: Yes  
Enclosed: Yes  
Contiguous: Yes  
Permitted: Yes  
Wet space: No  
Addition: No  
Conversion: No

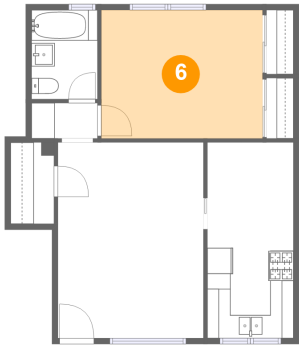
### 5 Floor 1 - Bath



Max Dimensions: 5'8" x 7'8"  
Calculated Area: 43 sq. ft  
Included: Yes

Heated: Yes  
Finished: Yes  
Enclosed: Yes  
Contiguous: Yes  
Permitted: Yes  
Wet space: Yes  
Addition: No  
Conversion: No

6 Floor 1 - Bedroom



Max Dimensions: 13'10" x 11'0"  
Calculated Area: 153 sq. ft  
Included: Yes

Heated: Yes  
Finished: Yes  
Enclosed: Yes  
Contiguous: Yes  
Permitted: Yes  
Wet space: No  
Addition: No  
Conversion: No