

Home report

6 Lochmere Lane, Nashua, Hillsborough County, New Hampshire, United States, 03063



Total Area: 1144 sq. ft

Below Ground: 0 sq. ft, Floor 2: 567 sq. ft, Floor 3: 577 sq. ft

Excluded: Basement 215 sq. ft, Utility 30 sq. ft, Garage 281 sq. ft, Undefined 15 sq. ft, Balcony 45 sq. ft, Walls: 123 sq. ft

Property summary

3 Floors

2 Bedrooms

1 Bathrooms

Home report

**6 Lochmere Lane, Nashua, Hillsborough County, New  
Hampshire, United States, 03063**

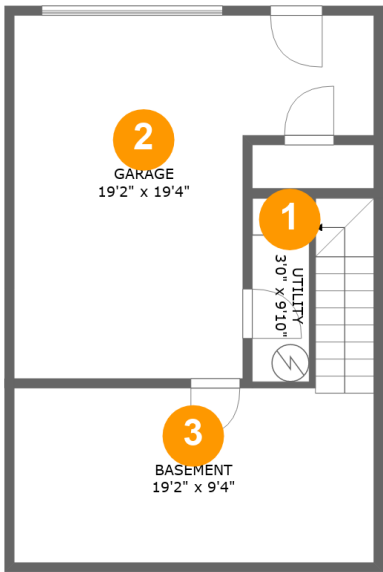


**1**  
Half baths



**1**  
Garages

6 Lochmere Lane, Nashua, Hillsborough County, New Hampshire, United States, 03063



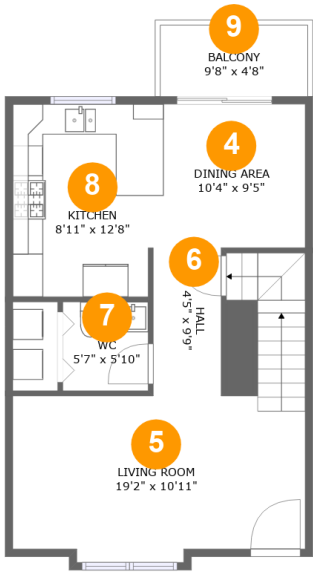
Room dimensions

Floor 1 Below ground Total:0sqft Excluded: 541sqft

#		Max Dimensions	sqft	Included
1	Utility	3'0" x 9'10"	30 sq. ft	No
2	Garage	19'2" x 19'4"	281 sq. ft	No
3	Basement	19'2" x 9'4"	210 sq. ft	No

Home report

6 Lochmere Lane, Nashua, Hillsborough County, New Hampshire, United States, 03063

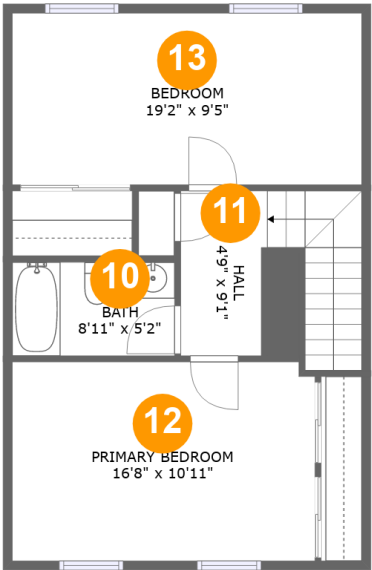


Room dimensions

Floor 2 Total:567sqft Excluded: 45sqft

#		Max Dimensions	sqft	Included
4	Dining Area	10'4" x 9'5"	97 sq. ft	Yes
5	Living Room	19'2" x 10'11"	235 sq. ft	Yes
6	Hall	4'5" x 9'9"	43 sq. ft	Yes
7	WC	5'7" x 5'10"	33 sq. ft	Yes
8	Kitchen	8'11" x 12'8"	112 sq. ft	Yes
9	Balcony	9'8" x 4'8"	45 sq. ft	No

6 Lochmere Lane, Nashua, Hillsborough County, New Hampshire, United States, 03063



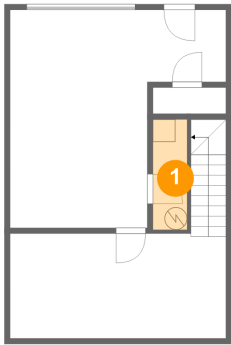
Room dimensions

Floor 3 Total:577sqft   Excluded: 0sqft

#		Max Dimensions	sqft	Included
10	Bath	8'11" x 5'2"	46 sq. ft	Yes
11	Hall	4'9" x 9'1"	78 sq. ft	Yes
12	Primary Bedroom	16'8" x 10'11"	181 sq. ft	Yes
13	Bedroom	19'2" x 9'5"	181 sq. ft	Yes

6 Lochmere Lane, Nashua, Hillsborough County, New Hampshire, United States, 03063

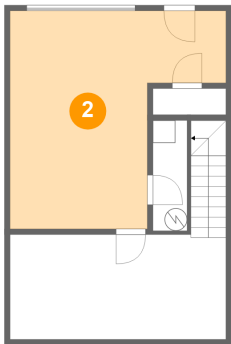
1 Floor 1 - Utility



Max Dimensions: 3'0" x 9'10"  
Calculated Area: 30 sq. ft  
Included: No

Heated: Yes  
Finished: No  
Enclosed: Yes  
Contiguous: Yes  
Permitted: Yes  
Wet space: No  
Addition: No  
Conversion: No

2 Floor 1 - Garage

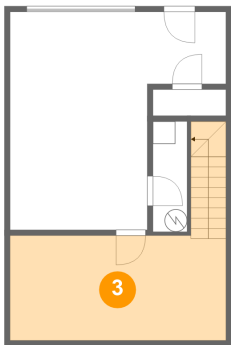


Max Dimensions: 19'2" x 19'4"  
Calculated Area: 281 sq. ft  
Included: No

Heated: No  
Finished: No  
Enclosed: Yes  
Contiguous: Yes  
Permitted: Yes  
Wet space: No  
Addition: No  
Conversion: No

6 Lochmere Lane, Nashua, Hillsborough County, New Hampshire, United States, 03063

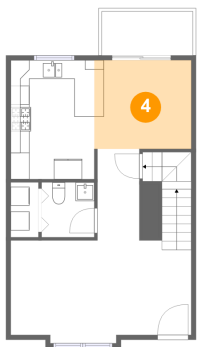
3 Floor 1 - Basement



Max Dimensions: 19'2" x 9'4"  
Calculated Area: 210 sq. ft  
Included: No

Heated: Yes  
Finished: No  
Enclosed: Yes  
Contiguous: Yes  
Permitted: Yes  
Wet space: No  
Addition: No  
Conversion: No

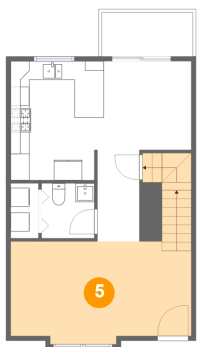
4 Floor 2 - Dining Area



Max Dimensions: 10'4" x 9'5"  
Calculated Area: 97 sq. ft  
Included: Yes

Heated: Yes  
Finished: Yes  
Enclosed: Yes  
Contiguous: Yes  
Permitted: Yes  
Wet space: No  
Addition: No  
Conversion: No

5 Floor 2 - Living Room



Max Dimensions: 19'2" x 10'11"  
Calculated Area: 235 sq. ft  
Included: Yes

Heated: Yes  
Finished: Yes  
Enclosed: Yes  
Contiguous: Yes  
Permitted: Yes  
Wet space: No  
Addition: No  
Conversion: No

6 Lochmere Lane, Nashua, Hillsborough County, New Hampshire, United States, 03063

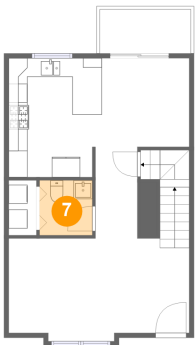
6 Floor 2 - Hall



Max Dimensions: 4'5" x 9'9"  
Calculated Area: 43 sq. ft  
Included: Yes

Heated: Yes  
Finished: Yes  
Enclosed: Yes  
Contiguous: Yes  
Permitted: Yes  
Wet space: No  
Addition: No  
Conversion: No

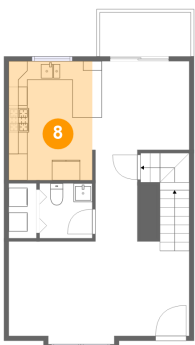
7 Floor 2 - WC



Max Dimensions: 5'7" x 5'10"  
Calculated Area: 33 sq. ft  
Included: Yes

Heated: Yes  
Finished: Yes  
Enclosed: Yes  
Contiguous: Yes  
Permitted: Yes  
Wet space: Yes  
Addition: No  
Conversion: No

8 Floor 2 - Kitchen



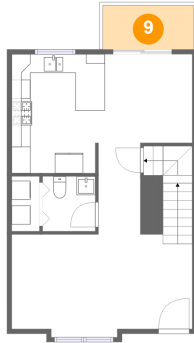
Max Dimensions: 8'11" x 12'8"  
Calculated Area: 112 sq. ft  
Included: Yes

Heated: Yes  
Finished: Yes  
Enclosed: Yes  
Contiguous: Yes  
Permitted: Yes  
Wet space: No  
Addition: No  
Conversion: No



6 Lochmere Lane, Nashua, Hillsborough County, New Hampshire, United States, 03063

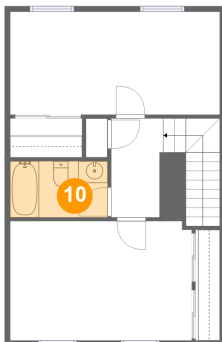
9 Floor 2 - Balcony



Max Dimensions: 9'8" x 4'8"  
Calculated Area: 45 sq. ft  
Included: No

Heated: No  
Finished: Yes  
Enclosed: No  
Contiguous: Yes  
Permitted: Yes  
Wet space: No  
Addition: No  
Conversion: No

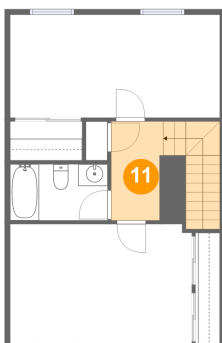
10 Floor 3 - Bath



Max Dimensions: 8'11" x 5'2"  
Calculated Area: 46 sq. ft  
Included: Yes

Heated: Yes  
Finished: Yes  
Enclosed: Yes  
Contiguous: Yes  
Permitted: Yes  
Wet space: Yes  
Addition: No  
Conversion: No

11 Floor 3 - Hall

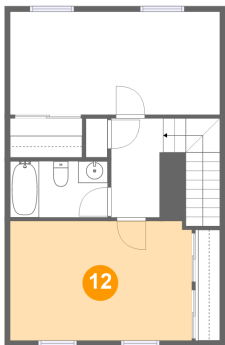


Max Dimensions: 4'9" x 9'1"  
Calculated Area: 78 sq. ft  
Included: Yes

Heated: Yes  
Finished: Yes  
Enclosed: Yes  
Contiguous: Yes  
Permitted: Yes  
Wet space: No  
Addition: No  
Conversion: No

6 Lochmere Lane, Nashua, Hillsborough County, New Hampshire, United States, 03063

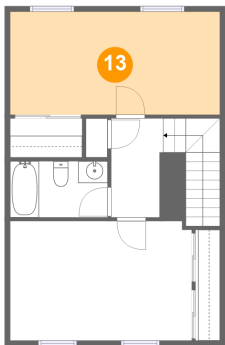
12 Floor 3 - Primary Bedroom



Max Dimensions: 16'8" x 10'11"  
Calculated Area: 181 sq. ft  
Included: Yes

Heated: Yes  
Finished: Yes  
Enclosed: Yes  
Contiguous: Yes  
Permitted: Yes  
Wet space: No  
Addition: No  
Conversion: No

13 Floor 3 - Bedroom



Max Dimensions: 19'2" x 9'5"  
Calculated Area: 181 sq. ft  
Included: Yes

Heated: Yes  
Finished: Yes  
Enclosed: Yes  
Contiguous: Yes  
Permitted: Yes  
Wet space: No  
Addition: No  
Conversion: No