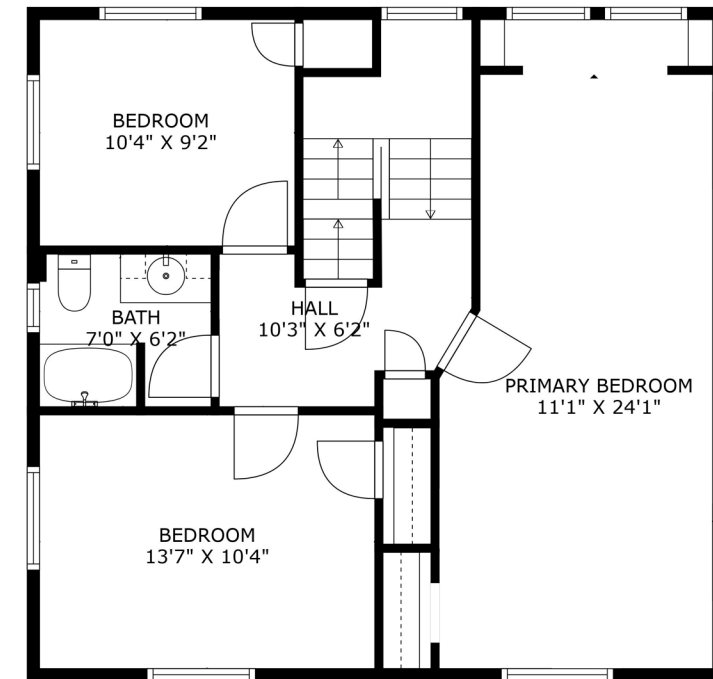
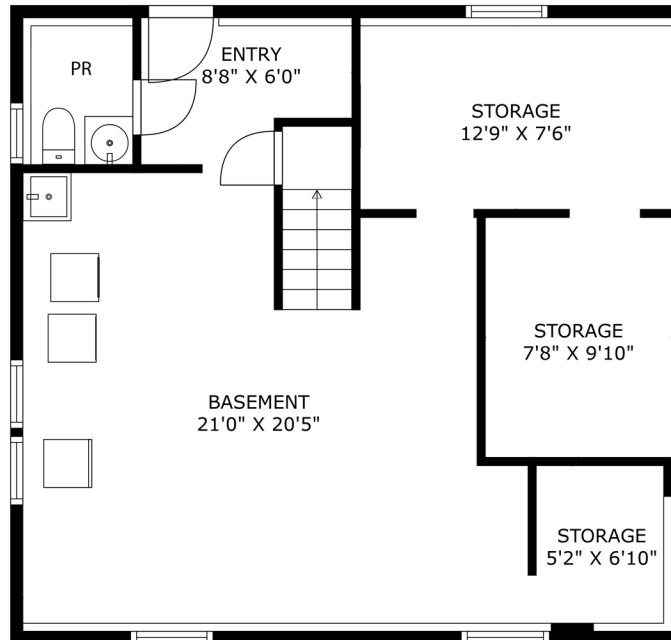


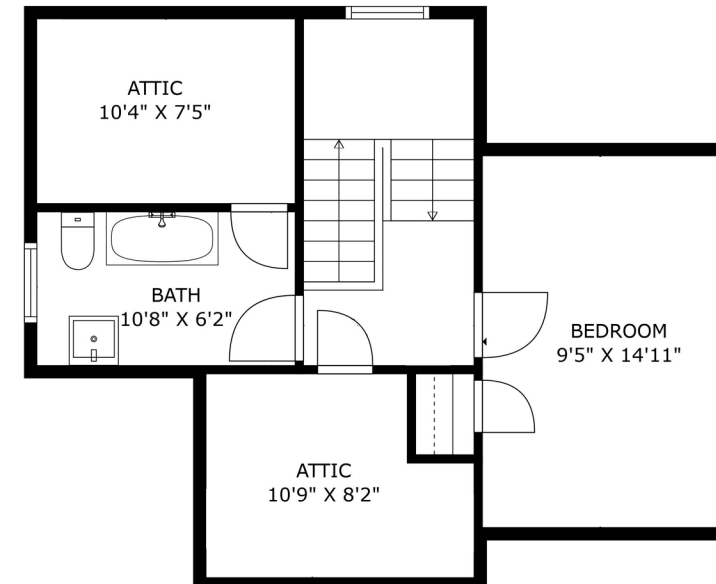
FLOOR 2



FLOOR 3



FLOOR 1



FLOOR 4

TOTAL: 1978 sq. ft
 BELOW GROUND: 31 sq. ft, FLOOR 2: 899 sq. ft, FLOOR 3: 721 sq. ft, FLOOR 4: 327 sq. ft
 EXCLUDED AREAS: BASEMENT: 373 sq. ft, STORAGE: 220 sq. ft, ENTRY: 46 sq. ft,
 ATTIC: 78 sq. ft, LOW CEILING: 77 sq. ft