


Home report

1320 12th Avenue, Harrison Township, Natrona Heights, Allegheny County, Pennsylvania, United



Property summary

 **1** Garages

 **3** Bedrooms

 **2** Bathrooms

 **0** Half baths

 **4** Floors

 **2,038** Gross living area sqft

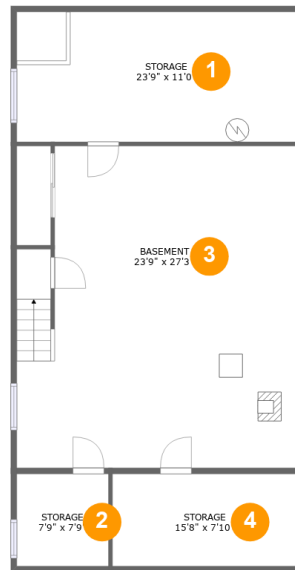
 **4,632** Total sqft

Scan captured on Tue, 18 Feb 2025 11:57:12 GMT

Information is calculated by **LIDAR** technology deemed highly reliable but not guaranteed.

Home report

1320 12th Avenue, Harrison Township, Natrona Heights, Allegheny County, Pennsylvania, United



Room dimensions

Floor 1

Total sqft: 1191

Living area: 0

#		Dimensions	sqft	Counted as living area
1	Storage	23'9" x 11'0"	262 sq. ft	No
2	Storage	7'9" x 7'9"	61 sq. ft	No
3	Basement	23'9" x 27'3"	619 sq. ft	No
4	Storage	15'8" x 7'10"	123 sq. ft	No

Scan captured on Tue, 18 Feb 2025 11:57:12 GMT

Information is calculated by **LIDAR** technology deemed highly reliable but not guaranteed.

Home report

1320 12th Avenue, Harrison Township, Natrona Heights, Allegheny County, Pennsylvania, United



Room dimensions

Floor 2

Total sqft: 1814 Living area: 1129

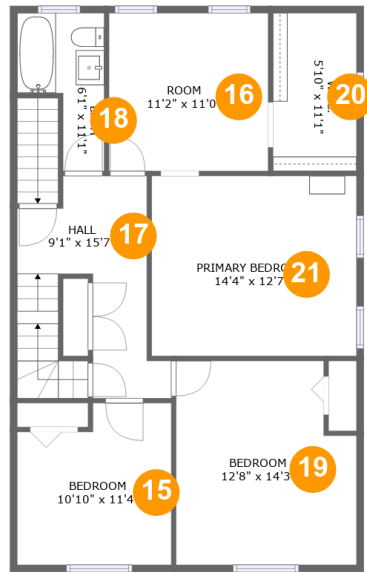
#		Dimensions	sqft	Counted as living area
5	Garage	19'11" x 20'11"	417 sq. ft	No
6	Porch	23'9" x 6'7"	158 sq. ft	No
7	Dining Room	14'10" x 12'10"	191 sq. ft	Yes
8	Eat-in Kitchen	14'6" x 12'4"	180 sq. ft	Yes
9	Foyer	8'7" x 11'10"	126 sq. ft	Yes
10	Hall	8'7" x 14'1"	92 sq. ft	Yes
11	Bath	5'9" x 8'11"	51 sq. ft	Yes
12	Sitting Room	14'8" x 7'10"	115 sq. ft	Yes
13	Porch	8'7" x 7'9"	67 sq. ft	No
14	Living Room	14'8" x 12'9"	190 sq. ft	Yes

Scan captured on Tue, 18 Feb 2025 11:57:12 GMT

Information is calculated by **LIDAR** technology deemed highly reliable but not guaranteed.

Home report

1320 12th Avenue, Harrison Township, Natrona Heights, Allegheny County, Pennsylvania, United



Room dimensions

Floor 3

Total sqft: 983 Living area: 909

#		Dimensions	sqft	Counted as living area
15	Bedroom	10'10" x 11'4"	112 sq. ft	Yes
16	Room	11'2" x 11'0"	123 sq. ft	Yes
17	Hall	9'1" x 15'7"	123 sq. ft	Yes
18	Bath	6'1" x 11'1"	50 sq. ft	Yes
19	Bedroom	12'8" x 14'3"	169 sq. ft	Yes
20	W.I.C.	5'10" x 11'1"	65 sq. ft	No
21	Primary Bedroom	14'4" x 12'7"	181 sq. ft	Yes

Home report

1320 12th Avenue, Harrison Township, Natrona Heights, Allegheny County, Pennsylvania, United



Room dimensions

Floor 4

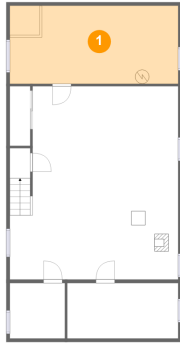
Total sqft: 644 Living area: 0

#		Dimensions	sqft	Counted as living area
22	Room	20'11" x 20'5"	337 sq. ft	No
23	Room	11'8" x 17'11"	188 sq. ft	No

Scan captured on Tue, 18 Feb 2025 11:57:12 GMT

Information is calculated by **LIDAR** technology deemed highly reliable but not guaranteed.

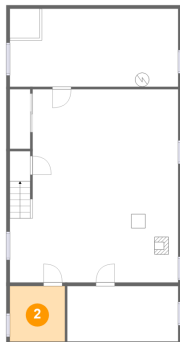
1 Floor 1 - Storage



Dimensions: 23'9" x 11'0"
Area: 262 sq. ft
Counted as living area: No

Heated: No
Finished: No
Enclosed: No
Contiguous: Yes
Permitted: Yes
Wet space: No
Addition: No
Conversion: No

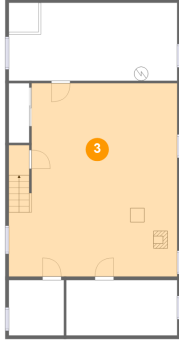
2 Floor 1 - Storage



Dimensions: 7'9" x 7'9"
Area: 61 sq. ft
Counted as living area: No

Heated: No
Finished: No
Enclosed: No
Contiguous: Yes
Permitted: Yes
Wet space: No
Addition: No
Conversion: No

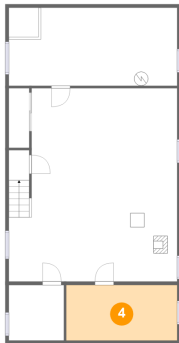
3 Floor 1 - Basement



Dimensions: 23'9" x 27'3"
Area: 619 sq. ft
Counted as living area: No

Heated: Yes
Finished: No
Enclosed: Yes
Contiguous: Yes
Permitted: Yes
Wet space: No
Addition: No
Conversion: No

4 Floor 1 - Storage



Dimensions: 15'8" x 7'10"
Area: 123 sq. ft
Counted as living area: No

Heated: No
Finished: No
Enclosed: No
Contiguous: Yes
Permitted: Yes
Wet space: No
Addition: No
Conversion: No

5 Floor 2 - Garage



Dimensions: 19'11" x 20'11"
Area: 417 sq. ft
Counted as living area: No

Heated: No
Finished: No
Enclosed: Yes
Contiguous: Yes
Permitted: Yes
Wet space: No
Addition: No
Conversion: No



6 Floor 2 - Porch



Dimensions: 23'9" x 6'7"
Area: 158 sq. ft
Counted as living area: No

Heated: No
Finished: Yes
Enclosed: No
Contiguous: Yes
Permitted: Yes
Wet space: No
Addition: No
Conversion: No

7 Floor 2 - Dining Room



Dimensions: 14'10" x 12'10"
Area: 191 sq. ft
Counted as living area: Yes

Heated: Yes
Finished: Yes
Enclosed: Yes
Contiguous: Yes
Permitted: Yes
Wet space: No
Addition: No
Conversion: No

8 Floor 2 - Eat-in Kitchen



Dimensions: 14'6" x 12'4"
Area: 180 sq. ft
Counted as living area: Yes

Heated: Yes
Finished: Yes
Enclosed: Yes
Contiguous: Yes
Permitted: Yes
Wet space: No
Addition: No
Conversion: No

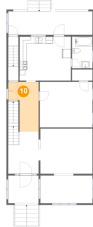
9 Floor 2 - Foyer



Dimensions: 8'7" x 11'10"
Area: 126 sq. ft
Counted as living area: Yes

Heated: Yes
Finished: Yes
Enclosed: Yes
Contiguous: Yes
Permitted: Yes
Wet space: No
Addition: No
Conversion: No

10 Floor 2 - Hall



Dimensions: 8'7" x 14'1"
Area: 92 sq. ft
Counted as living area: Yes

Heated: Yes
Finished: Yes
Enclosed: Yes
Contiguous: Yes
Permitted: Yes
Wet space: No
Addition: No
Conversion: No

11 Floor 2 - Bath



Dimensions: 5'9" x 8'11"
Area: 51 sq. ft
Counted as living area: Yes

Heated: Yes
Finished: Yes
Enclosed: Yes
Contiguous: Yes
Permitted: Yes
Wet space: Yes
Addition: No
Conversion: No

12 Floor 2 - Sitting Room



Dimensions: 14'8" x 7'10"
Area: 115 sq. ft
Counted as living area: Yes

Heated: Yes
Finished: Yes
Enclosed: Yes
Contiguous: Yes
Permitted: Yes
Wet space: No
Addition: No
Conversion: No

13 Floor 2 - Porch



Dimensions: 8'7" x 7'9"
Area: 67 sq. ft
Counted as living area: No

Heated: No
Finished: Yes
Enclosed: No
Contiguous: Yes
Permitted: Yes
Wet space: No
Addition: No
Conversion: No

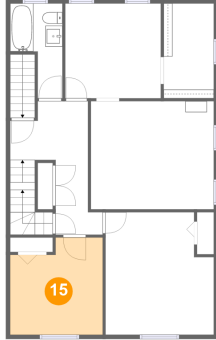
14 Floor 2 - Living Room



Dimensions: 14'8" x 12'9"
Area: 190 sq. ft
Counted as living area: Yes

Heated: Yes
Finished: Yes
Enclosed: Yes
Contiguous: Yes
Permitted: Yes
Wet space: No
Addition: No
Conversion: No

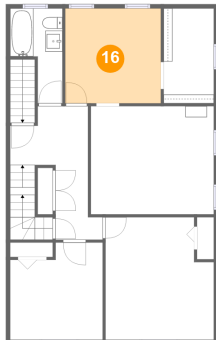
15 Floor 3 - Bedroom



Dimensions: 10'10" x 11'4"
Area: 112 sq. ft
Counted as living area: Yes

Heated: Yes
Finished: Yes
Enclosed: Yes
Contiguous: Yes
Permitted: Yes
Wet space: No
Addition: No
Conversion: No

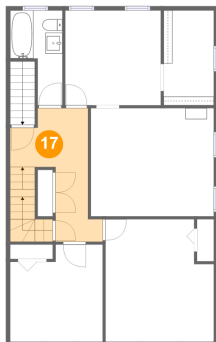
16 Floor 3 - Room



Dimensions: 11'2" x 11'0"
Area: 123 sq. ft
Counted as living area: Yes

Heated: Yes
Finished: Yes
Enclosed: Yes
Contiguous: Yes
Permitted: Yes
Wet space: No
Addition: No
Conversion: No

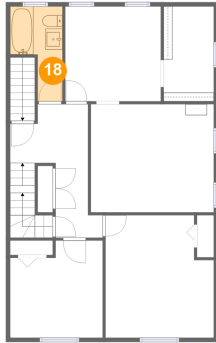
17 Floor 3 - Hall



Dimensions: 9'1" x 15'7"
Area: 123 sq. ft
Counted as living area: Yes

Heated: Yes
Finished: Yes
Enclosed: Yes
Contiguous: Yes
Permitted: Yes
Wet space: No
Addition: No
Conversion: No

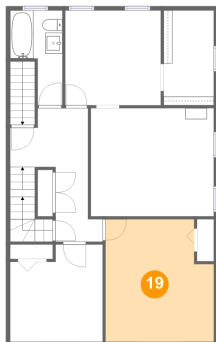
18 Floor 3 - Bath



Dimensions: 6'1" x 11'1"
Area: 50 sq. ft
Counted as living area: Yes

Heated: Yes
Finished: Yes
Enclosed: Yes
Contiguous: Yes
Permitted: Yes
Wet space: Yes
Addition: No
Conversion: No

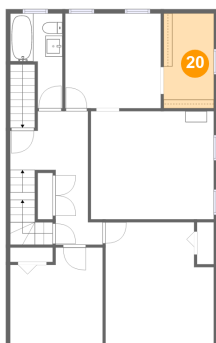
19 Floor 3 - Bedroom



Dimensions: 12'8" x 14'3"
Area: 169 sq. ft
Counted as living area: Yes

Heated: Yes
Finished: Yes
Enclosed: Yes
Contiguous: Yes
Permitted: Yes
Wet space: No
Addition: No
Conversion: No

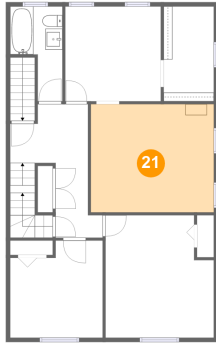
20 Floor 3 - W.I.C.



Dimensions: 5'10" x 11'1"
Area: 65 sq. ft
Counted as living area: No

Heated: Yes
Finished: Yes
Enclosed: Yes
Contiguous: Yes
Permitted: Yes
Wet space: No
Addition: No
Conversion: No

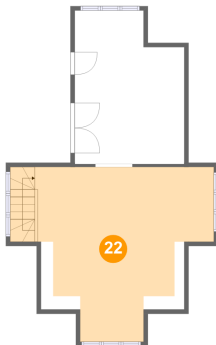
21 Floor 3 - Primary Bedroom



Dimensions: 14'4" x 12'7"
Area: 181 sq. ft
Counted as living area: Yes

Heated: Yes
Finished: Yes
Enclosed: Yes
Contiguous: Yes
Permitted: Yes
Wet space: No
Addition: No
Conversion: No

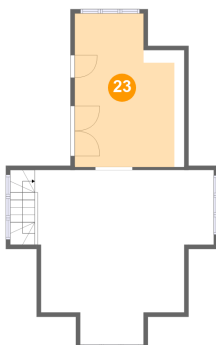
22 Floor 4 - Room



Dimensions: 20'11" x 20'5"
Area: 337 sq. ft
Counted as living area: No

Heated: Yes
Finished: Yes
Enclosed: Yes
Contiguous: Yes
Permitted: Yes
Wet space: No
Addition: No
Conversion: No

23 Floor 4 - Room



Dimensions: 11'8" x 17'11"
Area: 188 sq. ft
Counted as living area: No

Heated: Yes
Finished: Yes
Enclosed: Yes
Contiguous: Yes
Permitted: Yes
Wet space: No
Addition: No
Conversion: No