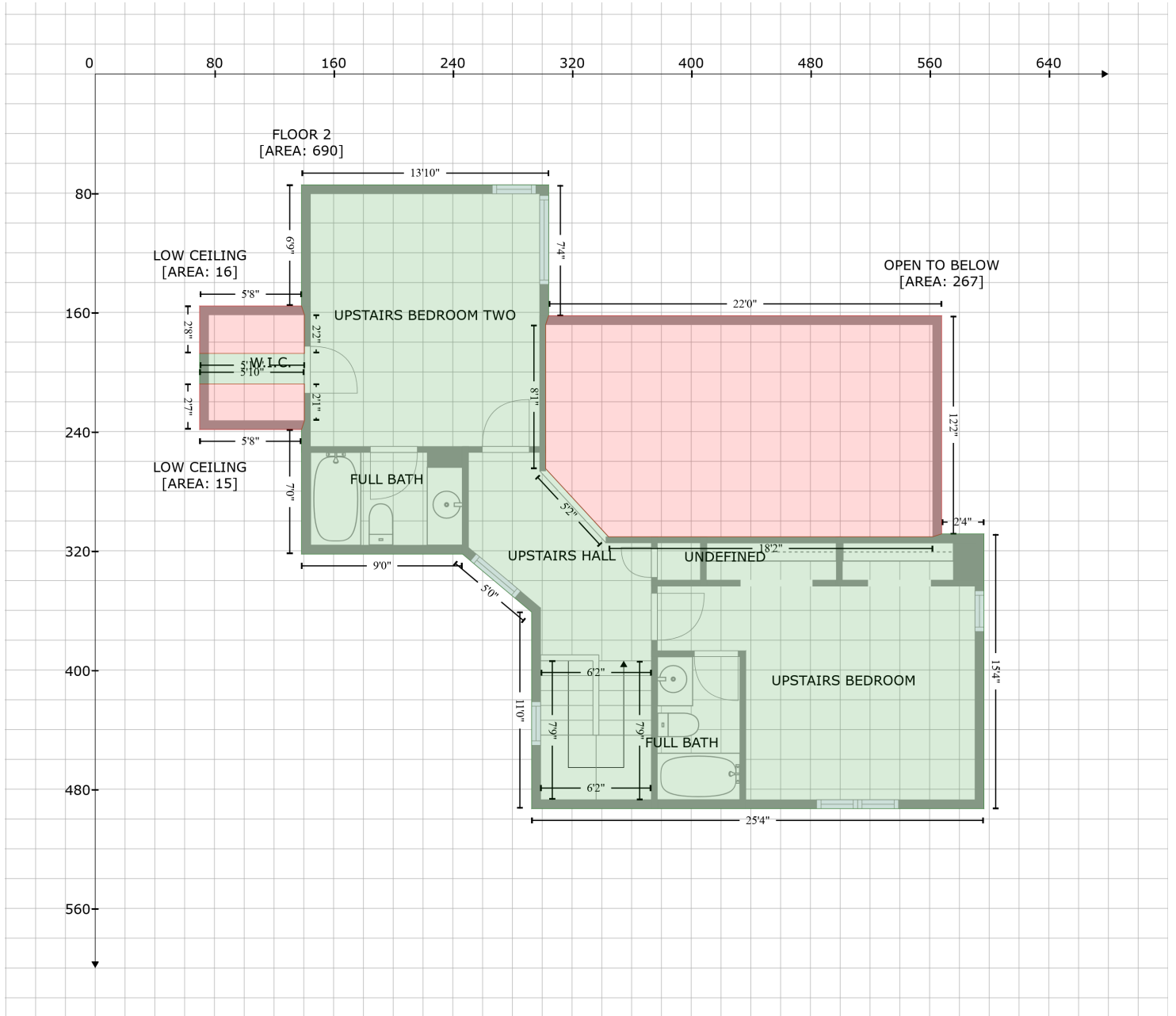


117 Island Boulevard, Warner Robins, Houston County, Georgia, United States, 31088

Gross Living Area: 1807 sq. ft



| Space | Area (sq. ft) | Calculation <small>Coordinate Polygon Area Algorithm using inches</small> |
|--------------------------|---------------|--|
| FLOOR 2 (Living area) | 690 | $ \begin{aligned} & -((304.3 + 304.3) * (74.4 - 162.2) + (304.3 + 302.3) * (162.2 - 168.2) + (302.3 + 302.3) * (168.2 - \\ & 264.9) + (302.3 + 344.5) * (264.9 - 310.6) + (344.5 + 562.1) * (310.6 - 310.6) + (562.1 + 568.1) * \\ & (310.6 - 308.7) + (568.1 + 596.5) * (308.7 - 308.7) + (596.5 + 596.5) * (308.7 - 493.1) + (596.5 + \\ & 292.9) * (493.1 - 493.1) + (292.9 + 292.9) * (493.1 - 361.2) + (292.9 + 246.6) * (361.2 - 322.3) + \\ & (246.6 + 246.6) * (322.3 - 322.3) + (246.6 + 138.4) * (322.3 - 322.3) + (138.4 + 138.4) * (322.3 - \\ & 238.7) + (138.4 + 140.4) * (238.7 - 232.7) + (140.4 + 140.4) * (232.7 - 208.1) + (140.4 + 70.1) * \\ & (208.1 - 208.1) + (70.1 + 70.1) * (208.1 - 187.6) + (70.1 + 140.4) * (187.6 - 187.6) + (140.4 + \\ & 140.4) * (187.6 - 161.7) + (140.4 + 138.4) * (161.7 - 155.7) + (138.4 + 138.4) * (155.7 - 74.4) + \\ & (138.4 + 304.3) * (74.4 - 74.4)) * 0.5 * 0.00694 \end{aligned} $ |

117 Island Boulevard, Warner Robins, Houston County, Georgia, United States, 31088

Gross Living Area: 1807 sq. ft

| Space | Area (sq. ft) | Calculation <small>Coordinate Polygon Area Algorithm using inches</small> |
|------------------------------------|---------------|---|
| OPEN TO BELOW (Non-living area) | 267 | $-\left((568.1 + 568.1) * (162.2 - 308.7) + (568.1 + 562.1) * (308.7 - 310.6) + (562.1 + 344.5) * (310.6 - 310.6) + (344.5 + 302.3) * (310.6 - 264.9) + (302.3 + 302.3) * (264.9 - 168.2) + (302.3 + 304.3) * (168.2 - 162.2) + (304.3 + 568.1) * (162.2 - 162.2)\right) * 0.5 * 0.00694$ |
| LOW CEILING (Non-living area) | 15 | $-\left((140.4 + 140.4) * (208.1 - 232.7) + (140.4 + 138.4) * (232.7 - 238.7) + (138.4 + 70.1) * (238.7 - 238.7) + (70.1 + 70.1) * (238.7 - 208.1) + (70.1 + 140.4) * (208.1 - 208.1)\right) * 0.5 * 0.00694$ |
| LOW CEILING (Non-living area) | 16 | $-\left((138.4 + 140.4) * (155.7 - 161.7) + (140.4 + 140.4) * (161.7 - 187.6) + (140.4 + 70.1) * (187.6 - 187.6) + (70.1 + 70.1) * (187.6 - 155.7) + (70.1 + 138.4) * (155.7 - 155.7)\right) * 0.5 * 0.00694$ |