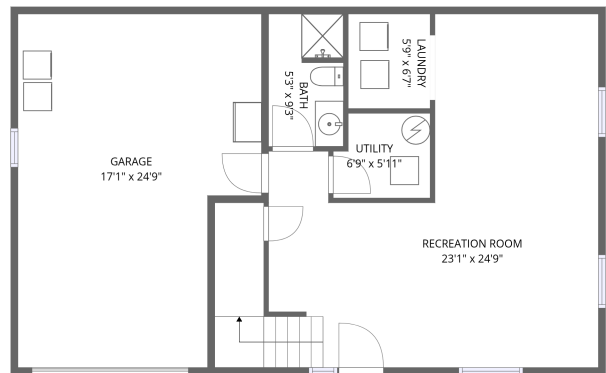
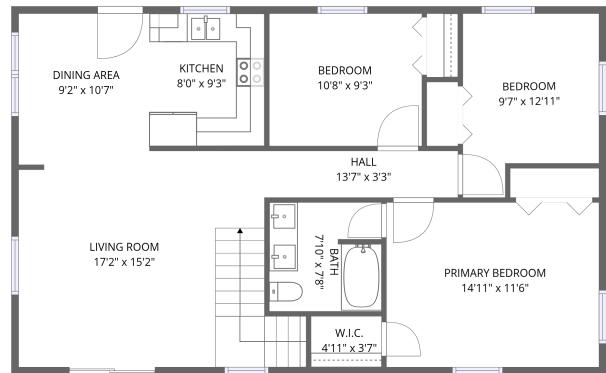


Home data report

1324 Pearl Harbor St,Rapid City,SD,US




1st floor




2nd floor

**Total Area: 1584 sq. ft**  
1st Floor: 578 sq. ft, 2nd Floor: 1006 sq. ft  
Excluded: Garage 377 sq. ft, Utility 37 sq. ft, Walls: 147 sq. ft

Property summary

 **2** Floors

 **3** Bedrooms

 **2** Bathrooms

 **1** Garages

Home data report

1324 Pearl Harbor St,Rapid City,SD,US



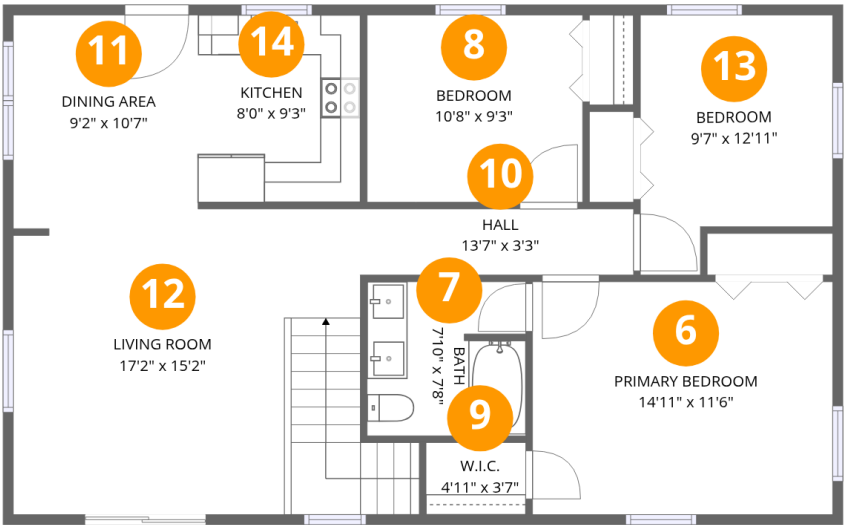
Room dimensions

Floor 1 Total:578sqft    Excluded: 414sqft

#		Dimensions	sqft	Counted as living area
1	Laundry	5'9" x 6'7"	38 sq. ft	Yes
2	Garage	17'1" x 24'9"	377 sq. ft	No
3	Bath	5'3" x 9'3"	48 sq. ft	Yes
4	Recreation Room	23'1" x 24'9"	473 sq. ft	Yes
5	Utility	6'9" x 5'11"	37 sq. ft	No

Home data report

1324 Pearl Harbor St,Rapid City,SD,US

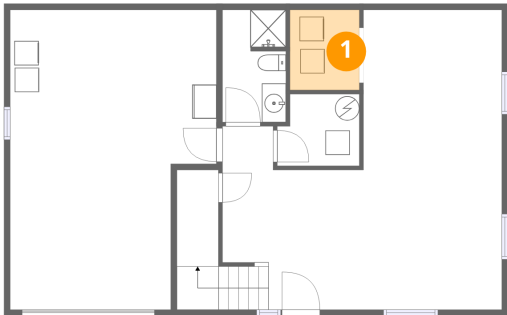


Room dimensions

Floor 2 Total:1006sqft Excluded: 0sqft

#		Dimensions	sqft	Counted as living area
6	Primary Bedroom	14'11" x 11'6"	172 sq. ft	Yes
7	Bath	7'10" x 7'8"	59 sq. ft	Yes
8	Bedroom	10'8" x 9'3"	99 sq. ft	Yes
9	W.I.C.	4'11" x 3'7"	18 sq. ft	Yes
10	Hall	13'7" x 3'3"	44 sq. ft	Yes
11	Dining Area	9'2" x 10'7"	90 sq. ft	Yes
12	Living Room	17'2" x 15'2"	269 sq. ft	Yes
13	Bedroom	9'7" x 12'11"	107 sq. ft	Yes
14	Kitchen	8'0" x 9'3"	75 sq. ft	Yes

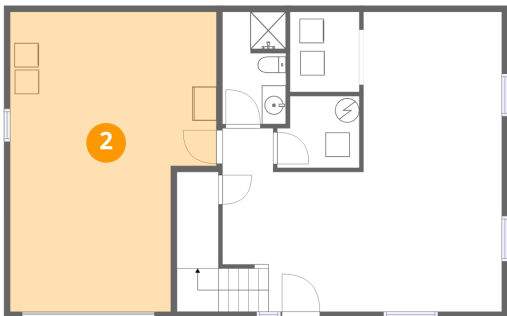
1 Floor 1 - Laundry



Dimensions: 5'9" x 6'7"  
Area: 38 sq. ft  
Counted as living area: Yes

Heated: Yes  
Finished: Yes  
Enclosed: Yes  
Contiguous: Yes  
Permitted: Yes  
Wet space: No  
Addition: No  
Conversion: No

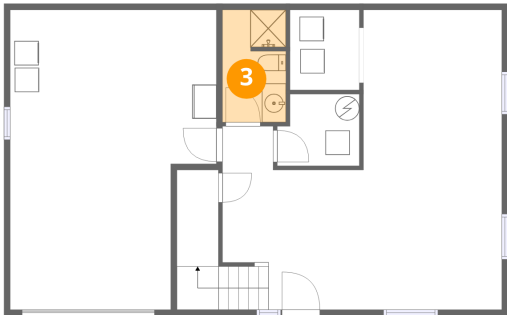
2 Floor 1 - Garage



Dimensions: 17'1" x 24'9"  
Area: 377 sq. ft  
Counted as living area: No

Heated: No  
Finished: No  
Enclosed: Yes  
Contiguous: Yes  
Permitted: Yes  
Wet space: No  
Addition: No  
Conversion: No

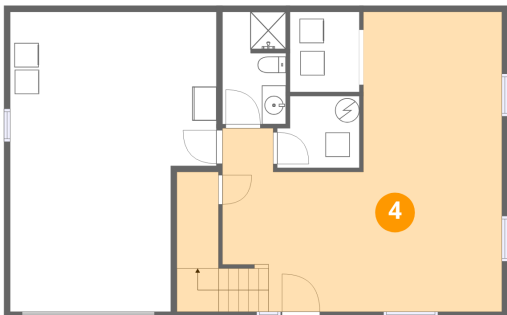
3 Floor 1 - Bath



Dimensions: 5'3" x 9'3"  
Area: 48 sq. ft  
Counted as living area: Yes

Heated: Yes  
Finished: Yes  
Enclosed: Yes  
Contiguous: Yes  
Permitted: Yes  
Wet space: Yes  
Addition: No  
Conversion: No

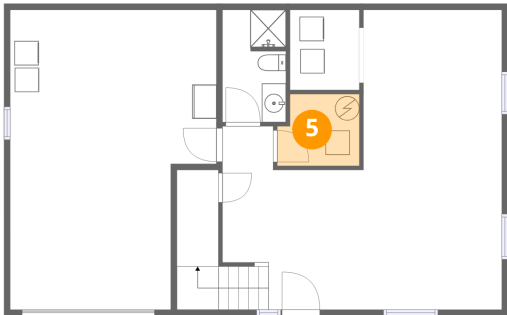
4 Floor 1 - Recreation Room



Dimensions: 23'1" x 24'9"  
Area: 473 sq. ft  
Counted as living area: Yes

Heated: Yes  
Finished: Yes  
Enclosed: Yes  
Contiguous: Yes  
Permitted: Yes  
Wet space: No  
Addition: No  
Conversion: No

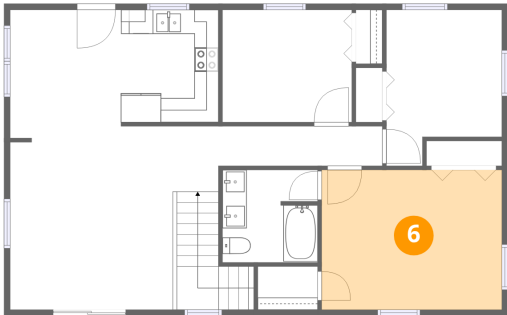
5 Floor 1 - Utility



Dimensions: 6'9" x 5'11"  
Area: 37 sq. ft  
Counted as living area: No

Heated: Yes  
Finished: No  
Enclosed: Yes  
Contiguous: Yes  
Permitted: Yes  
Wet space: No  
Addition: No  
Conversion: No

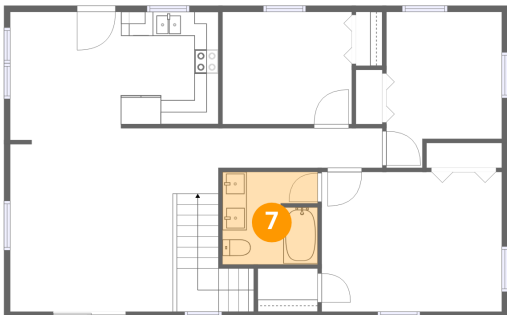
6 Floor 2 - Primary Bedroom



Dimensions: 14'11" x 11'6"  
Area: 172 sq. ft  
Counted as living area: Yes

Heated: Yes  
Finished: Yes  
Enclosed: Yes  
Contiguous: Yes  
Permitted: Yes  
Wet space: No  
Addition: No  
Conversion: No

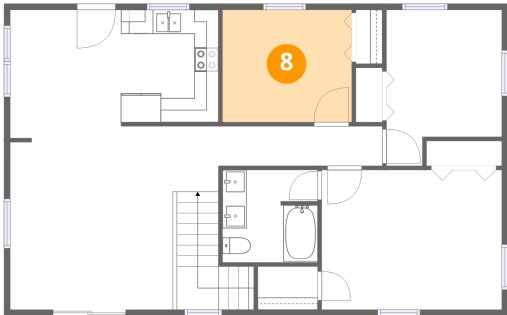
7 Floor 2 - Bath



Dimensions: 7'10" x 7'8"  
Area: 59 sq. ft  
Counted as living area: Yes

Heated: Yes  
Finished: Yes  
Enclosed: Yes  
Contiguous: Yes  
Permitted: Yes  
Wet space: Yes  
Addition: No  
Conversion: No

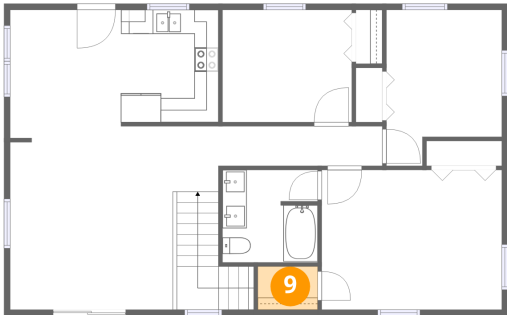
8 Floor 2 - Bedroom



Dimensions: 10'8" x 9'3"  
Area: 99 sq. ft  
Counted as living area: Yes

Heated: Yes  
Finished: Yes  
Enclosed: Yes  
Contiguous: Yes  
Permitted: Yes  
Wet space: No  
Addition: No  
Conversion: No

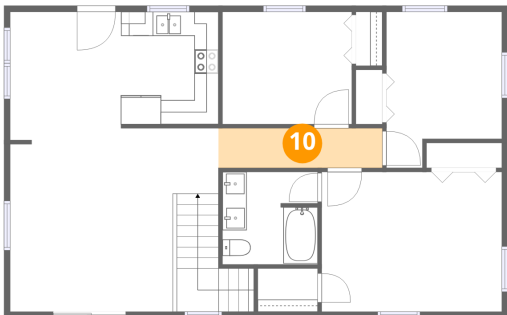
9 Floor 2 - W.I.C.



Dimensions: 4'11" x 3'7"  
Area: 18 sq. ft  
Counted as living area: Yes

Heated: Yes  
Finished: Yes  
Enclosed: Yes  
Contiguous: Yes  
Permitted: Yes  
Wet space: No  
Addition: No  
Conversion: No

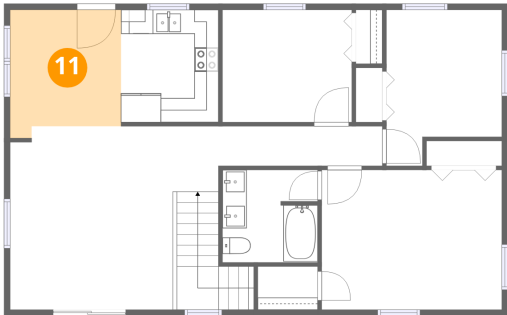
10 Floor 2 - Hall



Dimensions: 13'7" x 3'3"  
Area: 44 sq. ft  
Counted as living area: Yes

Heated: Yes  
Finished: Yes  
Enclosed: Yes  
Contiguous: Yes  
Permitted: Yes  
Wet space: No  
Addition: No  
Conversion: No

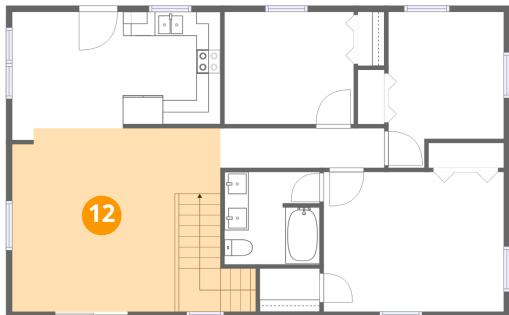
11 Floor 2 - Dining Area



Dimensions: 9'2" x 10'7"  
Area: 90 sq. ft  
Counted as living area: Yes

Heated: Yes  
Finished: Yes  
Enclosed: Yes  
Contiguous: Yes  
Permitted: Yes  
Wet space: No  
Addition: No  
Conversion: No

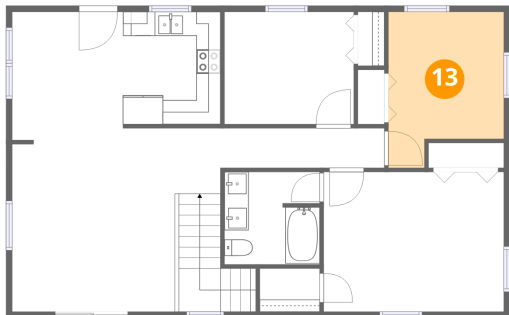
12 Floor 2 - Living Room



Dimensions: 17'2" x 15'2"  
Area: 269 sq. ft  
Counted as living area: Yes

Heated: Yes  
Finished: Yes  
Enclosed: Yes  
Contiguous: Yes  
Permitted: Yes  
Wet space: No  
Addition: No  
Conversion: No

13 Floor 2 - Bedroom



Dimensions: 9'7" x 12'11"  
Area: 107 sq. ft  
Counted as living area: Yes

Heated: Yes  
Finished: Yes  
Enclosed: Yes  
Contiguous: Yes  
Permitted: Yes  
Wet space: No  
Addition: No  
Conversion: No

14 Floor 2 - Kitchen



Dimensions: 8'0" x 9'3"  
Area: 75 sq. ft  
Counted as living area: Yes

Heated: Yes  
Finished: Yes  
Enclosed: Yes  
Contiguous: Yes  
Permitted: Yes  
Wet space: No  
Addition: No  
Conversion: No