

PLAN OF SURVEY

0.54

# LOT II - PLAN 574

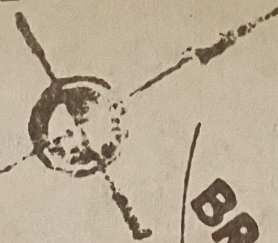
TOWNSHIP OF TORONTO  
COUNTY OF PEEB

SCALE: 1" = 30'

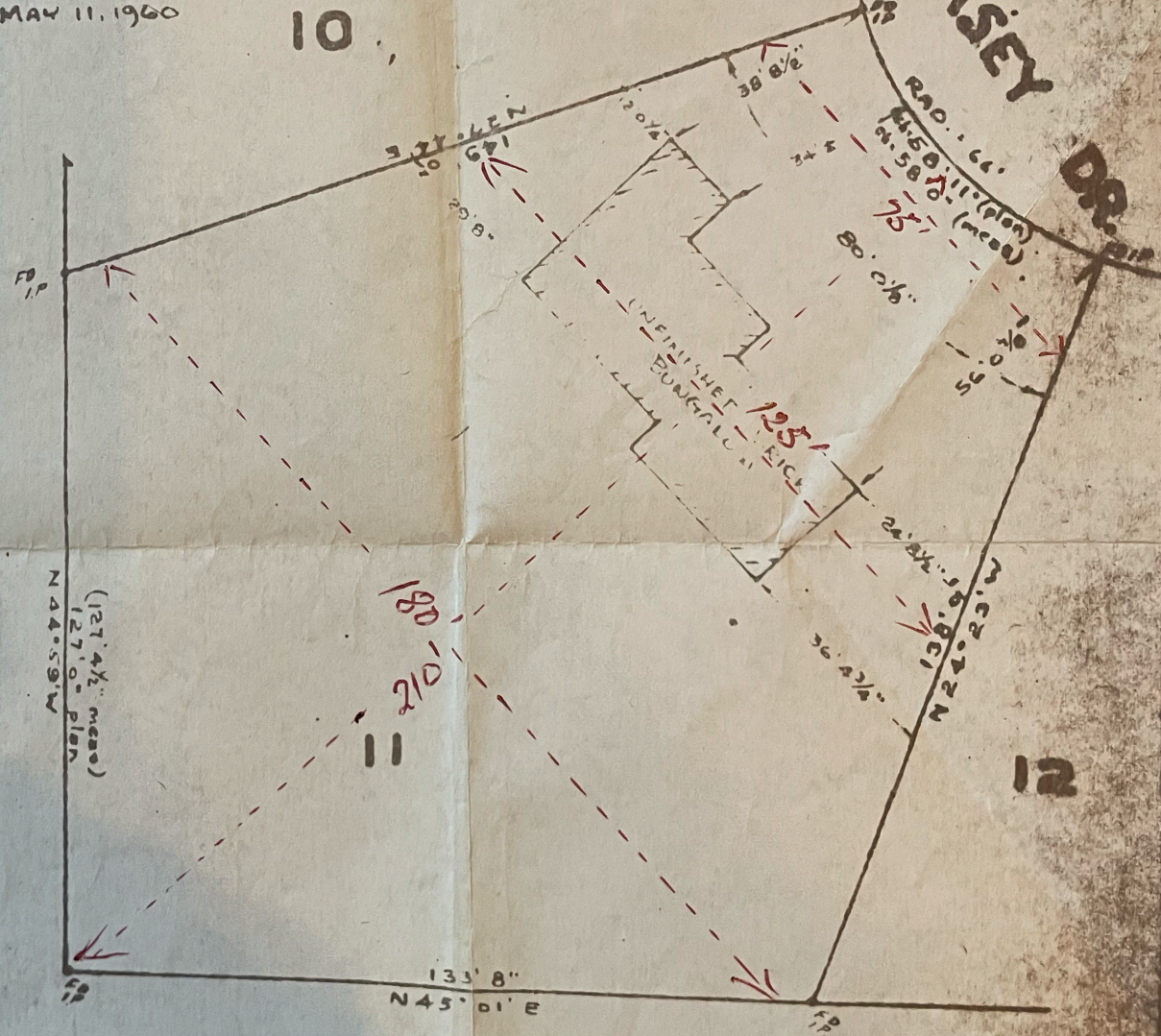
**STARR & TARASIO**  
PROFESSIONAL ENGINEERS  
ONTARIO LAND SURVEYORS  
206 LAKESHORE RD E  
PORT ST. GEORGE, ONT. PHONE CR 8-5511

BY *W.B. Starr*  
ONTARIO LAND SURVEYOR  
MAY 11, 1960

*Revised plat  
plan*



**BRAMSEY DR.**



10

12

1R-2