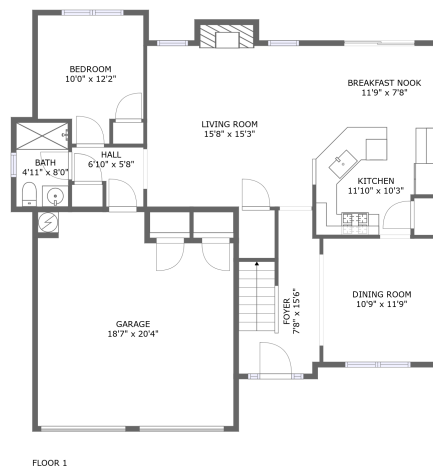
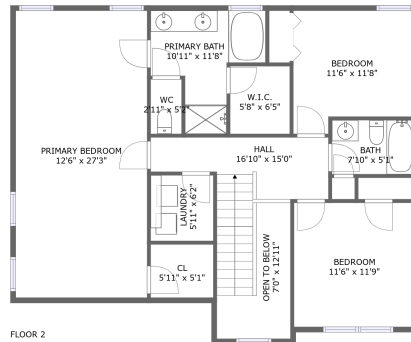



410 Azalea Cove, Canton, GA, US



Property summary

 **1** Garages

 **4** Bedrooms

 **3** Bathrooms

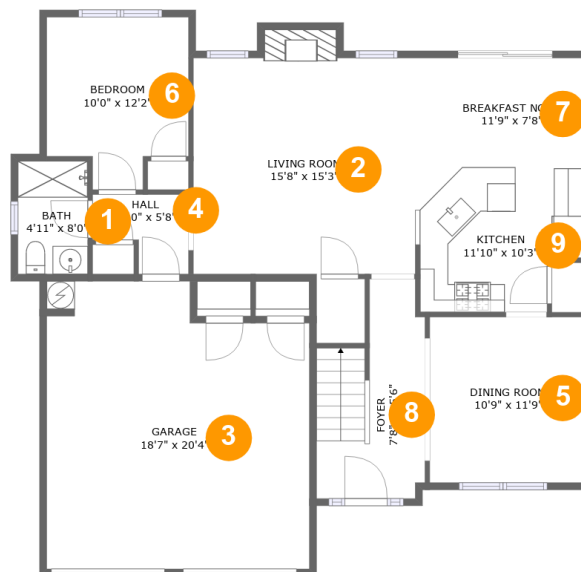
 **0** Half baths

 **2** Floors

 **2,083** Gross living area sqft

 **2,558** Total sqft

410 Azalea Cove, Canton, GA, US

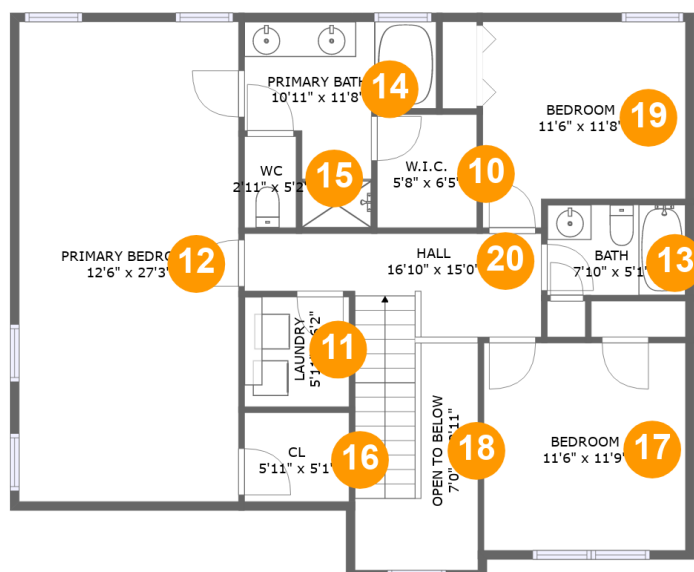


Room dimensions

Floor 1

Total sqft: 1396 Living area: 984

#		Dimensions	sqft	Counted as living area
1	Bath	4'11" x 8'0"	40 sq. ft	Yes
2	Living Room	15'8" x 15'3"	250 sq. ft	Yes
3	Garage	18'7" x 20'4"	352 sq. ft	No
4	Hall	6'10" x 5'8"	30 sq. ft	Yes
5	Dining Room	10'9" x 11'9"	126 sq. ft	Yes
6	Bedroom	10'0" x 12'2"	107 sq. ft	Yes
7	Nook	11'9" x 7'8"	91 sq. ft	Yes
8	Entry	7'8" x 15'6"	98 sq. ft	Yes
9	Kitchen	11'10" x 10'3"	110 sq. ft	Yes

410 Azalea Cove, Canton, GA, US**Room dimensions**

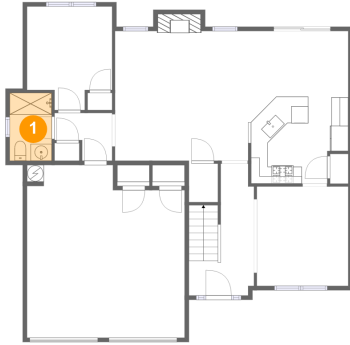
Floor 2

Total sqft: 1162 Living area: 1099

#		Dimensions	sqft	Counted as living area
10	Cl	5'8" x 6'5"	36 sq. ft	Yes
11	Utility	5'11" x 6'2"	37 sq. ft	Yes
12	Bedroom	12'6" x 27'3"	340 sq. ft	Yes
13	Bath	7'10" x 5'1"	40 sq. ft	Yes
14	Bath	10'11" x 11'8"	85 sq. ft	Yes
15	Bath	2'11" x 5'2"	15 sq. ft	Yes
16	Cl	5'11" x 5'1"	30 sq. ft	Yes
17	Bedroom	11'6" x 11'9"	135 sq. ft	Yes
18	Open To Below	7'0" x 12'11"	57 sq. ft	No
19	Bedroom	11'6" x 11'8"	121 sq. ft	Yes
20	Hall	16'10" x 15'0"	118 sq. ft	Yes

410 Azalea Cove, Canton, GA, US

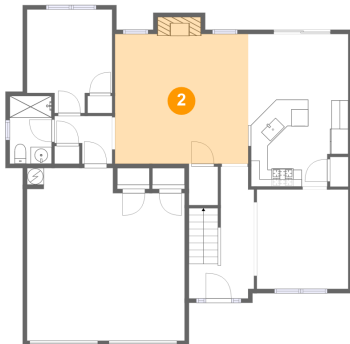
1 Floor 1 - Bath



Dimensions: 4'11" x 8'0"
Area: 40 sq. ft
Counted as living area: Yes

Heated: Yes
Finished: Yes
Enclosed: Yes
Contiguous: Yes
Permitted: Yes
Wet space: Yes
Addition: No
Conversion: No

2 Floor 1 - Living Room

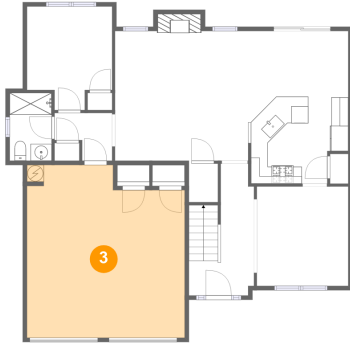


Dimensions: 15'8" x 15'3"
Area: 250 sq. ft
Counted as living area: Yes

Heated: Yes
Finished: Yes
Enclosed: Yes
Contiguous: Yes
Permitted: Yes
Wet space: No
Addition: No
Conversion: No

410 Azalea Cove, Canton, GA, US

3 Floor 1 - Garage



Dimensions: 18'7" x 20'4"
Area: 352 sq. ft
Counted as living area: No

Heated: No
Finished: No
Enclosed: Yes
Contiguous: Yes
Permitted: Yes
Wet space: No
Addition: No
Conversion: No

4 Floor 1 - Hall



Dimensions: 6'10" x 5'8"
Area: 30 sq. ft
Counted as living area: Yes

Heated: Yes
Finished: Yes
Enclosed: Yes
Contiguous: Yes
Permitted: Yes
Wet space: No
Addition: No
Conversion: No

5 Floor 1 - Dining Room

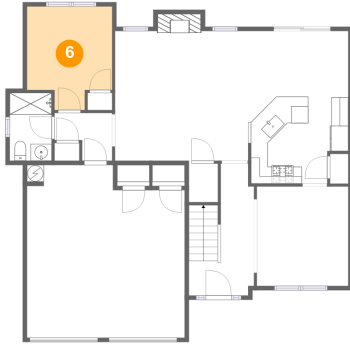


Dimensions: 10'9" x 11'9"
Area: 126 sq. ft
Counted as living area: Yes

Heated: Yes
Finished: Yes
Enclosed: Yes
Contiguous: Yes
Permitted: Yes
Wet space: No
Addition: No
Conversion: No

410 Azalea Cove, Canton, GA, US

6 Floor 1 - Bedroom



Dimensions: 10'0" x 12'2"
Area: 107 sq. ft
Counted as living area: Yes

Heated: Yes
Finished: Yes
Enclosed: Yes
Contiguous: Yes
Permitted: Yes
Wet space: No
Addition: No
Conversion: No

7 Floor 1 - Nook



Dimensions: 11'9" x 7'8"
Area: 91 sq. ft
Counted as living area: Yes

Heated: Yes
Finished: Yes
Enclosed: Yes
Contiguous: Yes
Permitted: Yes
Wet space: No
Addition: No
Conversion: No

8 Floor 1 - Entry

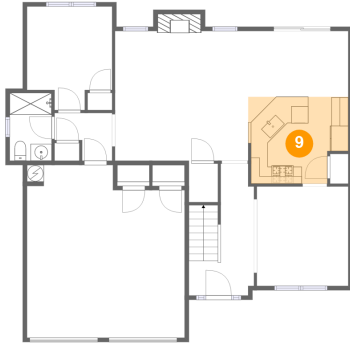


Dimensions: 7'8" x 15'6"
Area: 98 sq. ft
Counted as living area: Yes

Heated: Yes
Finished: Yes
Enclosed: Yes
Contiguous: Yes
Permitted: Yes
Wet space: No
Addition: No
Conversion: No

410 Azalea Cove, Canton, GA, US

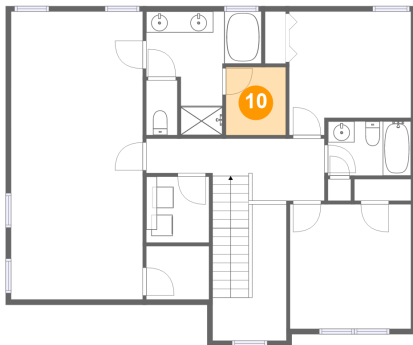
9 Floor 1 - Kitchen



Dimensions: 11'10" x 10'3"
Area: 110 sq. ft
Counted as living area: Yes

Heated: Yes
Finished: Yes
Enclosed: Yes
Contiguous: Yes
Permitted: Yes
Wet space: No
Addition: No
Conversion: No

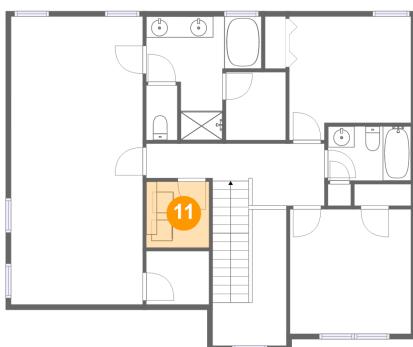
10 Floor 2 - Cl



Dimensions: 5'8" x 6'5"
Area: 36 sq. ft
Counted as living area: Yes

Heated: Yes
Finished: Yes
Enclosed: Yes
Contiguous: Yes
Permitted: Yes
Wet space: No
Addition: No
Conversion: No

11 Floor 2 - Utility

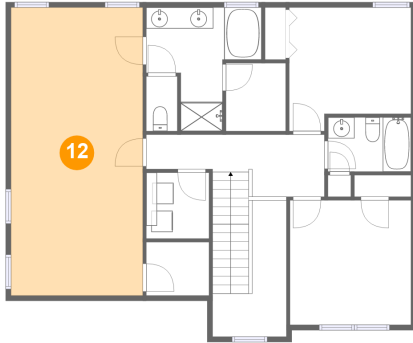


Dimensions: 5'11" x 6'2"
Area: 37 sq. ft
Counted as living area: Yes

Heated: Yes
Finished: Yes
Enclosed: Yes
Contiguous: Yes
Permitted: Yes
Wet space: No
Addition: No
Conversion: No

410 Azalea Cove, Canton, GA, US

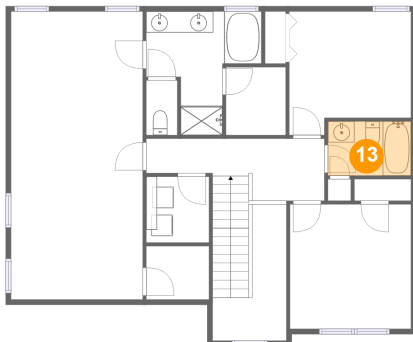
12 Floor 2 - Bedroom



Dimensions: 12'6" x 27'3"
Area: 340 sq. ft
Counted as living area: Yes

Heated: Yes
Finished: Yes
Enclosed: Yes
Contiguous: Yes
Permitted: Yes
Wet space: No
Addition: No
Conversion: No

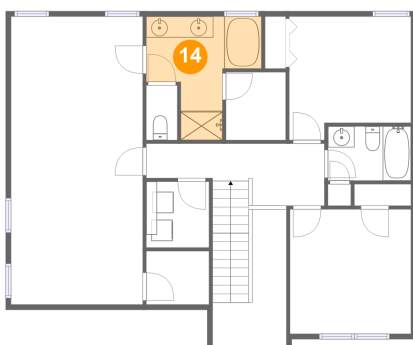
13 Floor 2 - Bath



Dimensions: 7'10" x 5'1"
Area: 40 sq. ft
Counted as living area: Yes

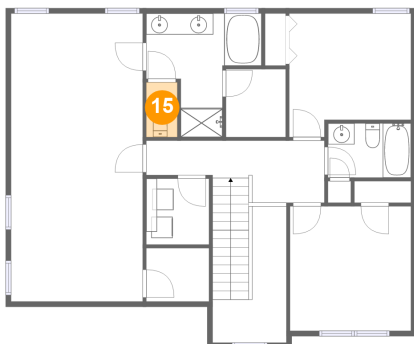
Heated: Yes
Finished: Yes
Enclosed: Yes
Contiguous: Yes
Permitted: Yes
Wet space: Yes
Addition: No
Conversion: No

14 Floor 2 - Bath



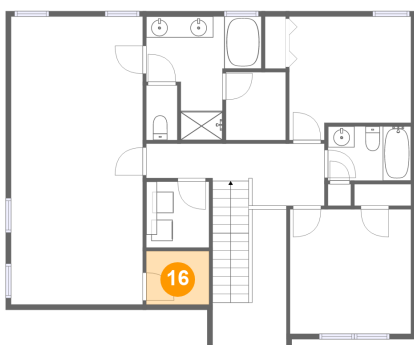
Dimensions: 10'11" x 11'8"
Area: 85 sq. ft
Counted as living area: Yes

Heated: Yes
Finished: Yes
Enclosed: Yes
Contiguous: Yes
Permitted: Yes
Wet space: Yes
Addition: No
Conversion: No

410 Azalea Cove, Canton, GA, US**15 Floor 2 - Bath**

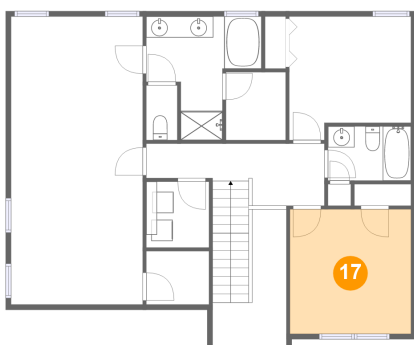
Dimensions: 2'11" x 5'2"
Area: 15 sq. ft
Counted as living area: Yes

Heated: Yes
Finished: Yes
Enclosed: Yes
Contiguous: Yes
Permitted: Yes
Wet space: Yes
Addition: No
Conversion: No

16 Floor 2 - Cl

Dimensions: 5'11" x 5'1"
Area: 30 sq. ft
Counted as living area: Yes

Heated: Yes
Finished: Yes
Enclosed: Yes
Contiguous: Yes
Permitted: Yes
Wet space: No
Addition: No
Conversion: No

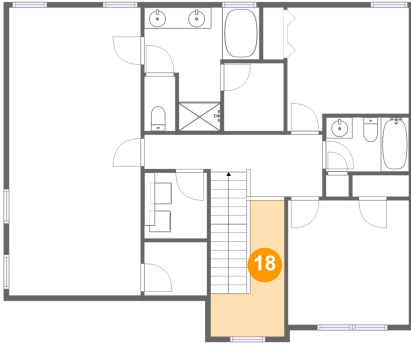
17 Floor 2 - Bedroom

Dimensions: 11'6" x 11'9"
Area: 135 sq. ft
Counted as living area: Yes

Heated: Yes
Finished: Yes
Enclosed: Yes
Contiguous: Yes
Permitted: Yes
Wet space: No
Addition: No
Conversion: No

410 Azalea Cove, Canton, GA, US

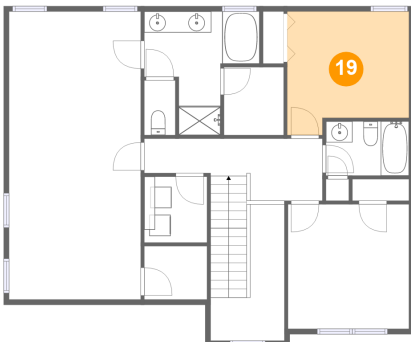
18 Floor 2 - Open To Below



Dimensions: 7'0" x 12'11"
Area: 57 sq. ft
Counted as living area: No

Heated: No
Finished: No
Enclosed: No
Contiguous: Yes
Permitted: No
Wet space: No
Addition: No
Conversion: No

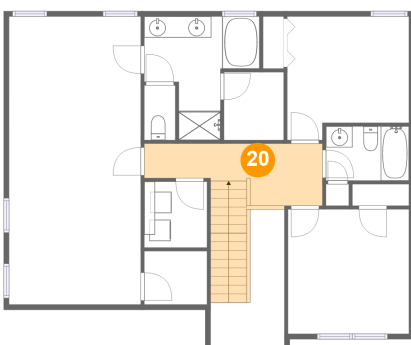
19 Floor 2 - Bedroom



Dimensions: 11'6" x 11'8"
Area: 121 sq. ft
Counted as living area: Yes

Heated: Yes
Finished: Yes
Enclosed: Yes
Contiguous: Yes
Permitted: Yes
Wet space: No
Addition: No
Conversion: No

20 Floor 2 - Hall



Dimensions: 16'10" x 15'0"
Area: 118 sq. ft
Counted as living area: Yes

Heated: Yes
Finished: Yes
Enclosed: Yes
Contiguous: Yes
Permitted: Yes
Wet space: No
Addition: No
Conversion: No