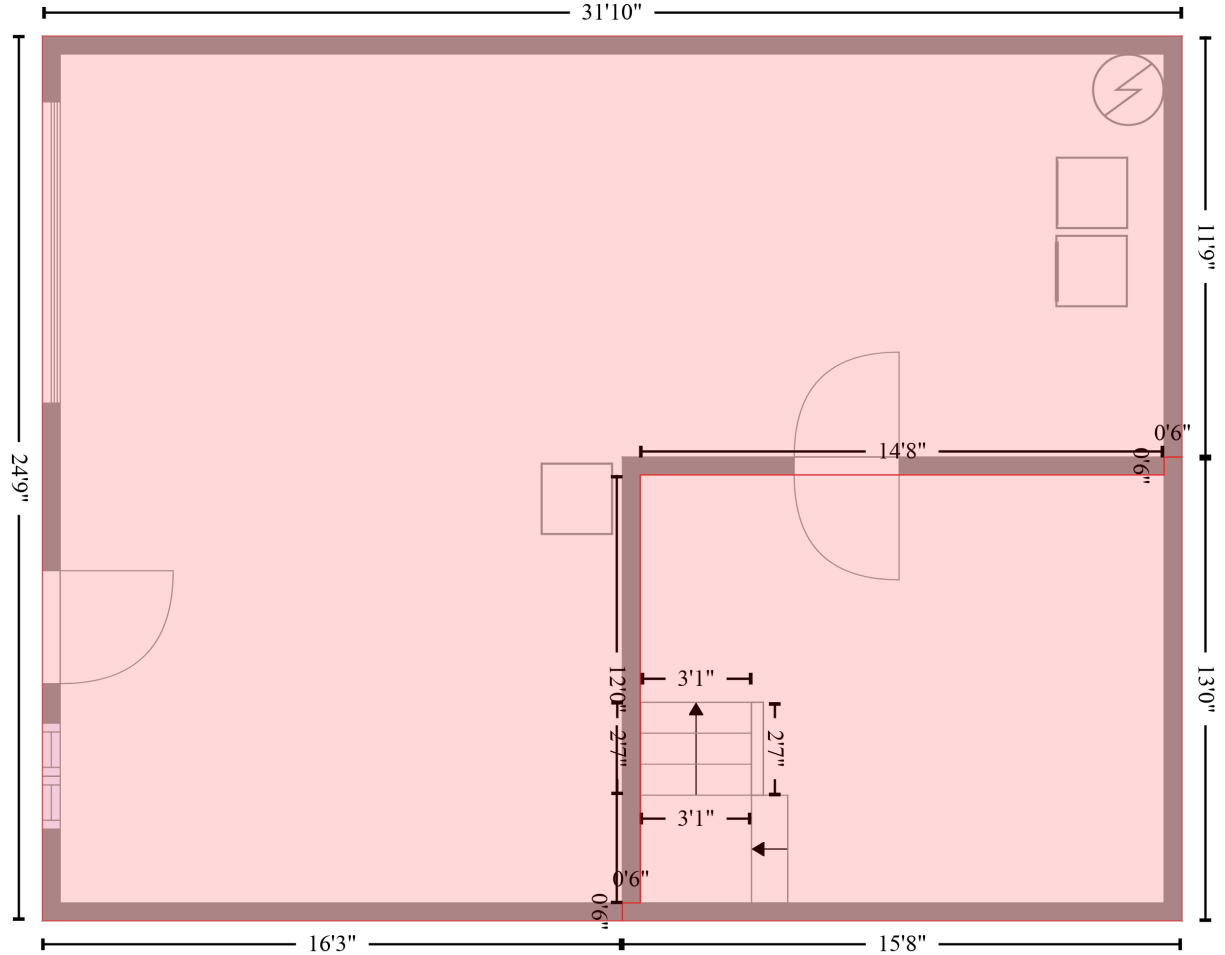


6081 Rocky Mount Road, Granite Falls, Caldwell County, North Carolina, United States, 28630

Gross Living Area: 1232 sq. ft

GARAGE (1)
[AREA: 598]

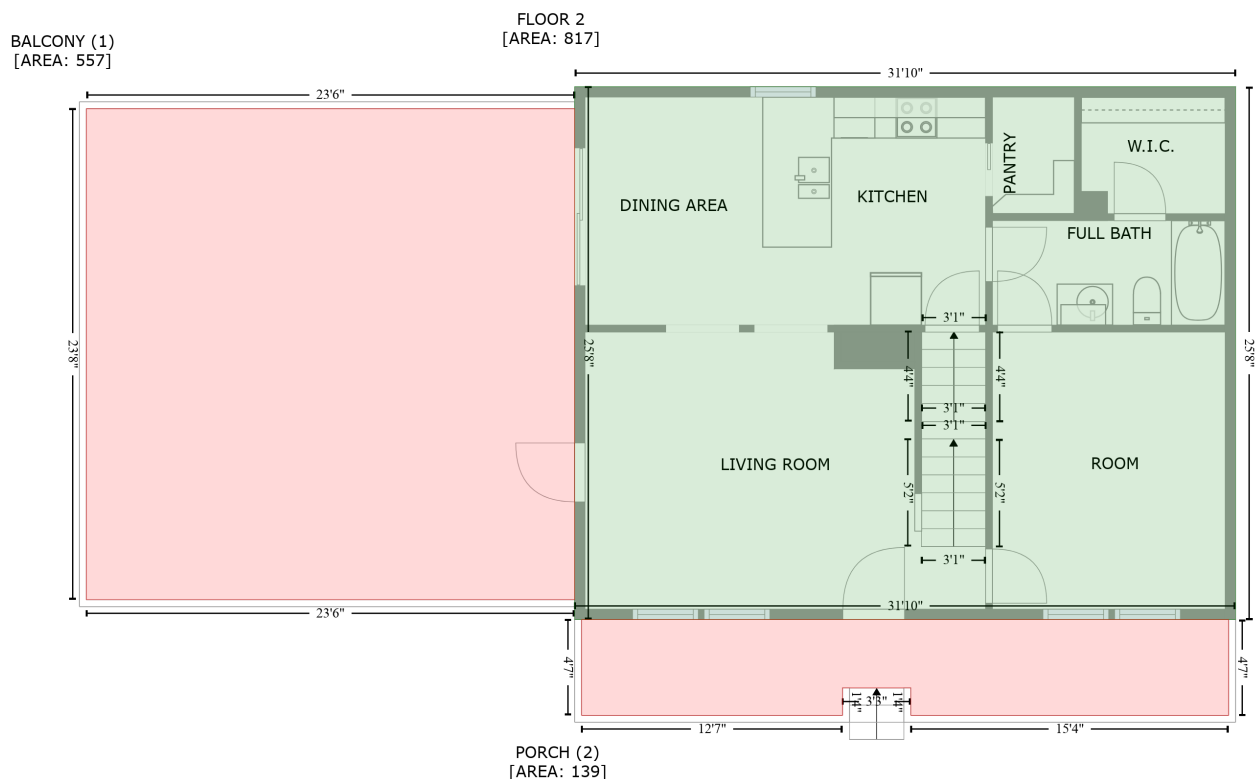


ROOM (2)
[AREA: 189]

Space	Area (sq. ft)	Calculation <small>Coordinate Polygon Area Algorithm using inches</small>
GARAGE (Non-living area)	598	$-(714.7 + 714.7) * (91.4 - 232.6) + (714.7 + 708.7) * (232.6 - 232.6) + (708.7 + 708.7) * (232.6 - 238.6) + (708.7 + 533) * (238.6 - 238.6) + (533 + 533) * (238.6 - 382.2) + (533 + 527) * (382.2 - 382.2) + (527 + 527) * (382.2 - 388.2) + (527 + 332.5) * (388.2 - 388.2) + (332.5 + 332.5) * (388.2 - 91.4) + (332.5 + 714.7) * (91.4 - 91.4) * 0.5 * 0.00694$
ROOM (Non-living area)	189	$-(714.7 + 714.7) * (232.6 - 388.2) + (714.7 + 527) * (388.2 - 388.2) + (527 + 527) * (388.2 - 382.2) + (527 + 533) * (382.2 - 382.2) + (533 + 533) * (382.2 - 238.6) + (533 + 708.7) * (238.6 - 238.6) + (708.7 + 708.7) * (238.6 - 232.6) + (708.7 + 714.7) * (232.6 - 232.6) * 0.5 * 0.00694$

6081 Rocky Mount Road, Granite Falls, Caldwell County, North Carolina, United States, 28630

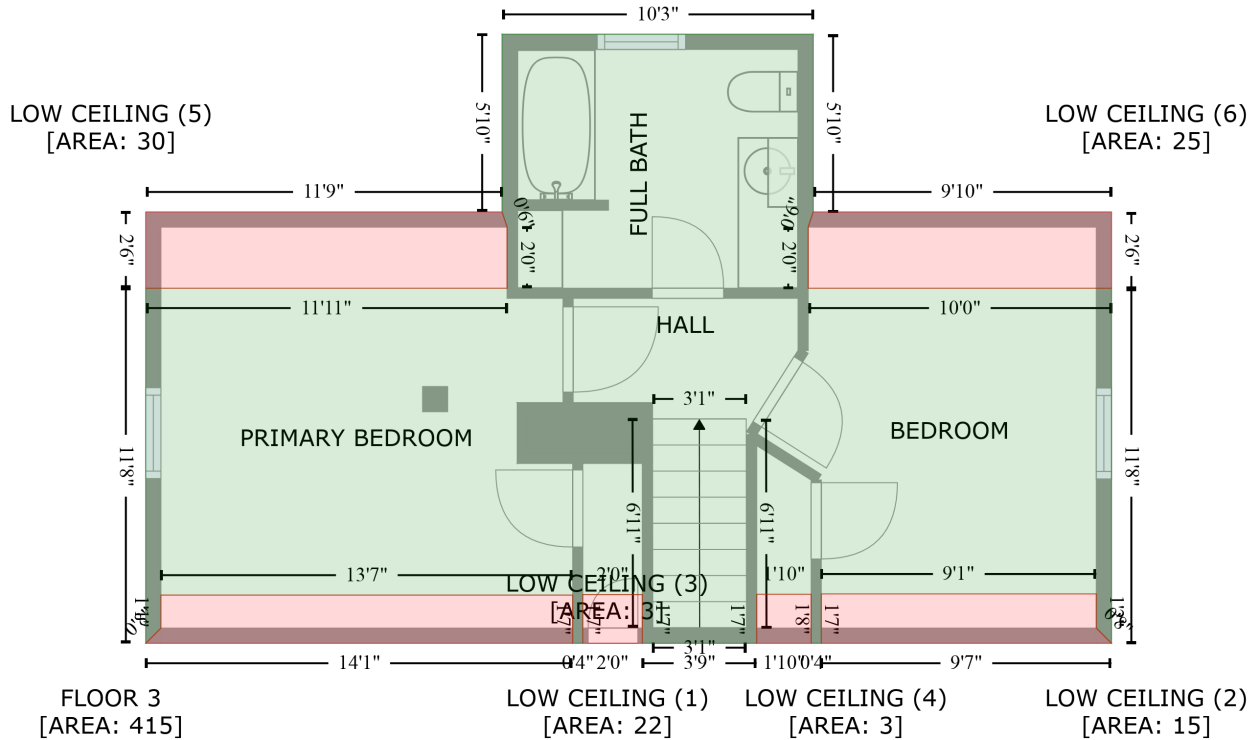
Gross Living Area: 1232 sq. ft



Space	Area (sq. ft)	Calculation
FLOOR 2 (Living area)	817	$-\left((714.7 + 714.7) * (80.3 - 388.2) + (714.7 + 332.5) * (388.2 - 388.2) + (332.5 + 332.5) * (388.2 - 80.3) + (332.5 + 714.7) * (80.3 - 80.3)\right) * 0.5 * 0.00694$
BALCONY (Non-living area)	557	$-\left((332.5 + 332.5) * (93 - 376.7) + (332.5 + 50.1) * (376.7 - 376.7) + (50.1 + 50.1) * (376.7 - 93) + (50.1 + 332.5) * (93 - 93)\right) * 0.5 * 0.00694$
PORCH (Non-living area)	139	$-\left((710.7 + 710.7) * (388.2 - 443.6) + (710.7 + 526.9) * (443.6 - 443.6) + (526.9 + 526.9) * (443.6 - 427.7) + (526.9 + 487.4) * (427.7 - 427.7) + (487.4 + 487.4) * (427.7 - 443.6) + (487.4 + 336.5) * (443.6 - 443.6) + (336.5 + 336.5) * (443.6 - 388.2) + (336.5 + 710.7) * (388.2 - 388.2)\right) * 0.5 * 0.00694$

6081 Rocky Mount Road, Granite Falls, Caldwell County, North Carolina, United States, 28630

Gross Living Area: 1232 sq. ft



Space	Area (sq. ft)	Calculation <small>Coordinate Polygon Area Algorithm using inches</small>
FLOOR 3 (Living area)	415	$-\left((574.3 + 529) * (321.1 - 321.1) + (529 + 529) * (321.1 - 301.8) + (529 + 505.5) * (301.8 - 301.8) + (505.5 + 505.5) * (301.8 - 321.1) + (505.5 + 501.5) * (321.1 - 321.1) + (501.5 + 501.5) * (321.1 - 302) + (501.5 + 338.5) * (302 - 302) + (338.5 + 338.5) * (302 - 315.1) + (338.5 + 332.5) * (315.1 - 321.1) + (332.5 + 332.5) * (321.1 - 180.7) + (332.5 + 475.5) * (180.7 - 180.7) + (475.5 + 475.5) * (180.7 - 156.5) + (475.5 + 473.5) * (156.5 - 150.5) + (473.5 + 473.5) * (150.5 - 80.3) + (473.5 + 596.7) * (80.3 - 80.3) + (596.7 + 596.7) * (80.3 - 150.5) + (596.7 + 594.7) * (150.5 - 156.5) + (594.7 + 594.7) * (156.5 - 180.7) + (594.7 + 714.7) * (180.7 - 180.7) + (714.7 + 714.7) * (180.7 - 321.1) + (714.7 + 708.7) * (321.1 - 315.1) + (708.7 + 708.7) * (315.1 - 301.6) + (708.7 + 599.9) * (301.6 - 301.6) + (599.9 + 599.9) * (301.6 - 321.1) + (599.9 + 595.9) * (321.1 - 321.1) + (595.9 + 595.9) * (321.1 - 301.7) + (595.9 + 574.3) * (301.7 - 301.7) + (574.3 + 574.3) * (301.7 - 321.1)\right) * 0.5 * 0.00694$
LOW CEILING (Non-living area)	22	$-\left((501.5 + 501.5) * (302 - 321.1) + (501.5 + 332.5) * (321.1 - 321.1) + (332.5 + 338.5) * (321.1 - 315.1) + (338.5 + 338.5) * (315.1 - 302) + (338.5 + 501.5) * (302 - 302)\right) * 0.5 * 0.00694$
LOW CEILING (Non-living area)	15	$-\left((708.7 + 708.7) * (301.6 - 315.1) + (708.7 + 714.7) * (315.1 - 321.1) + (714.7 + 599.9) * (321.1 - 321.1) + (599.9 + 599.9) * (321.1 - 301.6) + (599.9 + 708.7) * (301.6 - 301.6)\right) * 0.5 * 0.00694$
LOW CEILING (Non-living area)	3	$-\left((529 + 529) * (301.8 - 321.1) + (529 + 505.5) * (321.1 - 321.1) + (505.5 + 505.5) * (321.1 - 301.8) + (505.5 + 529) * (301.8 - 301.8)\right) * 0.5 * 0.00694$
LOW CEILING (Non-living area)	3	$-\left((595.9 + 595.9) * (301.7 - 321.1) + (595.9 + 574.3) * (321.1 - 321.1) + (574.3 + 574.3) * (321.1 - 301.7) + (574.3 + 595.9) * (301.7 - 301.7)\right) * 0.5 * 0.00694$
LOW CEILING (Non-living area)	30	$-\left((473.5 + 475.5) * (150.5 - 156.5) + (475.5 + 475.5) * (156.5 - 180.7) + (475.5 + 332.5) * (180.7 - 180.7) + (332.5 + 332.5) * (180.7 - 150.5) + (332.5 + 473.5) * (150.5 - 150.5)\right) * 0.5 * 0.00694$
LOW CEILING (Non-living area)	25	$-\left((714.7 + 714.7) * (150.5 - 180.7) + (714.7 + 594.7) * (180.7 - 180.7) + (594.7 + 594.7) * (180.7 - 156.5) + (594.7 + 596.7) * (156.5 - 150.5) + (596.7 + 714.7) * (150.5 - 150.5)\right) * 0.5 * 0.00694$