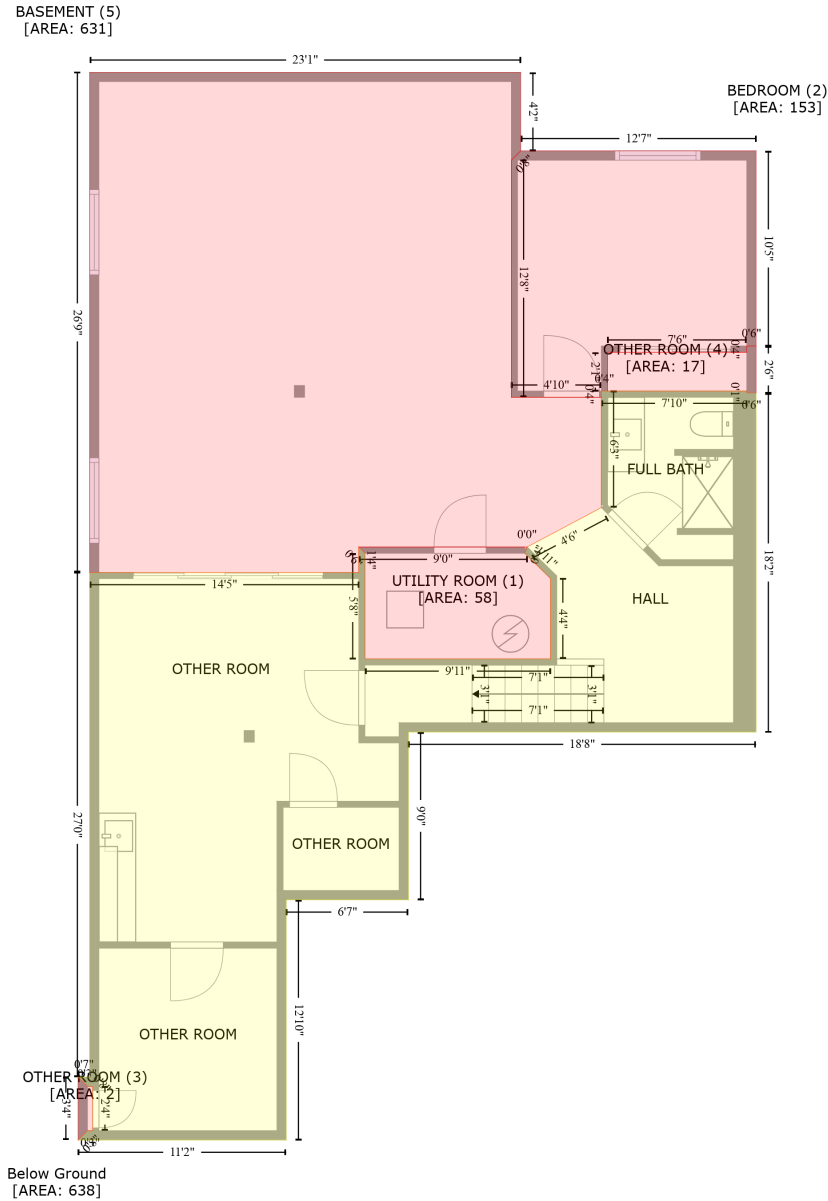


16045 Savory Cir, Parker, Colorado, United States

Gross Living Area: 1652 sq. ft



Space

Area (sq. ft)

Calculation Coordinate Polygon Area Algorithm using inches

Below Ground
(Living area)

638

$$\begin{aligned}
 & -((442.7 + 442.7) * (236.9 - 238.2) + (442.7 + 448.7) * (238.2 - 238.2) + (448.7 + 448.7) * (238.2 - 456) \\
 & + (448.7 + 225) * (456 - 456) + (225 + 225) * (456 - 563.8) + (225 + 146.4) * (563.8 - 563.8) \\
 & + (146.4 + 146.4) * (563.8 - 718.1) + (146.4 + 12.6) * (718.1 - 718.1) + (12.6 + 18.6) * (718.1 - 712.1) \\
 & + (18.6 + 21.9) * (712.1 - 712.1) + (21.9 + 21.9) * (712.1 - 683.7) + (21.9 + 18.6) * (683.7 - 683.7) \\
 & + (18.6 + 12.6) * (683.7 - 677.7) + (12.6 + 19.9) * (677.7 - 677.7) + (19.9 + 19.9) * (677.7 - 353.5) \\
 & + (19.9 + 193.1) * (353.5 - 353.5) + (193.1 + 193.1) * (353.5 - 337.1) + (193.1 + 197.1) * (337.1 - 341.1) \\
 & + (197.1 + 197.1) * (341.1 - 409) + (197.1 + 316.5) * (409 - 409) + (316.5 + 316.5)
 \end{aligned}$$

16045 Savory Cir, Parker, Colorado, United States

Gross Living Area: 1652 sq. ft

Space	Area (sq. ft)	Calculation <small>Coordinate Polygon Area Algorithm using inches</small>
UTILITY ROOM (Non-living area)	58	$\begin{aligned} & * (409 - 357.4) + (316.5 + 299.9) * (357.4 - 341.1) + (299.9 + 301.5) * (341.1 - 337.1) + (301.5 + \\ & 301.3) * (337.1 - 337.1) + (301.3 + 349.1) * (337.1 - 311.8) + (349.1 + 349.1) * (311.8 - 236.9) + \\ & (349.1 + 442.7) * (236.9 - 236.9) * 0.5 * 0.00694 \end{aligned}$
BEDROOM (Non-living area)	153	$\begin{aligned} & -((448.7 + 448.7) * (82.6 - 208) + (448.7 + 442.7) * (208 - 208) + (442.7 + 442.7) * (208 - 212) + \\ & (442.7 + 353.1) * (212 - 212) + (353.1 + 353.1) * (212 - 236.9) + (353.1 + 349.1) * (236.9 - 236.9) \\ & + (349.1 + 349.1) * (236.9 - 240.9) + (349.1 + 291.2) * (240.9 - 240.9) + (291.2 + 291.2) * (240.9 - \\ & 88.6) + (291.2 + 297.2) * (88.6 - 82.6) + (297.2 + 448.7) * (82.6 - 82.6)) * 0.5 * 0.00694 \end{aligned}$
OTHER ROOM (Non-living area)	2	$\begin{aligned} & -((12.6 + 18.6) * (677.7 - 683.7) + (18.6 + 21.9) * (683.7 - 683.7) + (21.9 + 21.9) * (683.7 - 712.1) \\ & + (21.9 + 18.6) * (712.1 - 712.1) + (18.6 + 12.6) * (712.1 - 718.1) + (12.6 + 12.6) * (718.1 - 677.7)) \\ & * 0.5 * 0.00694 \end{aligned}$
OTHER ROOM (Non-living area)	17	$\begin{aligned} & -((448.7 + 448.7) * (208 - 238.2) + (448.7 + 442.7) * (238.2 - 238.2) + (442.7 + 442.7) * (238.2 - \\ & 236.9) + (442.7 + 353.1) * (236.9 - 236.9) + (353.1 + 353.1) * (236.9 - 212) + (353.1 + 442.7) * \\ & (212 - 212) + (442.7 + 442.7) * (212 - 208) + (442.7 + 448.7) * (208 - 208)) * 0.5 * 0.00694 \end{aligned}$
BASEMENT (Non-living area)	631	$\begin{aligned} & -((19.9 + 297.2) * (32.1 - 32.1) + (297.2 + 297.2) * (32.1 - 82.6) + (297.2 + 291.2) * (82.6 - 88.6) + \\ & (291.2 + 291.2) * (88.6 - 240.9) + (291.2 + 349.1) * (240.9 - 240.9) + (349.1 + 349.1) * (240.9 - \\ & 311.8) + (349.1 + 301.3) * (311.8 - 337.1) + (301.3 + 193.1) * (337.1 - 337.1) + (193.1 + 193.1) * \\ & (337.1 - 353.5) + (193.1 + 19.9) * (353.5 - 353.5) + (19.9 + 19.9) * (353.5 - 32.1)) * 0.5 * 0.00694 \end{aligned}$

16045 Savory Cir, Parker, Colorado, United States

Gross Living Area: 1652 sq. ft



Space	Area (sq. ft)	Calculation <small>Coordinate Polygon Area Algorithm using inches</small>
FLOOR 2 (Living area)	1652	$-((304.8 + 304.8) * (16.8 - 82.6) + (304.8 + 458.4) * (82.6 - 82.6) + (458.4 + 458.4) * (82.6 - 456) + (458.4 + 225) * (456 - 456) + (225 + 225) * (456 - 569.8) + (225 + 146.4) * (569.8 - 569.8) + (146.4 + 146.4) * (569.8 - 726.5) + (146.4 + 2.7) * (726.5 - 726.5) + (2.7 + 2.7) * (726.5 - 16.8) + (2.7 + 304.8) * (16.8 - 16.8)) * 0.5 * 0.00694$
Bay window (Non-living area)	5	$-((118.9 + 118.9) * (726.5 - 734.9) + (118.9 + 25.7) * (734.9 - 734.9) + (25.7 + 25.7) * (734.9 - 726.5) + (25.7 + 118.9) * (726.5 - 726.5)) * 0.5 * 0.00694$