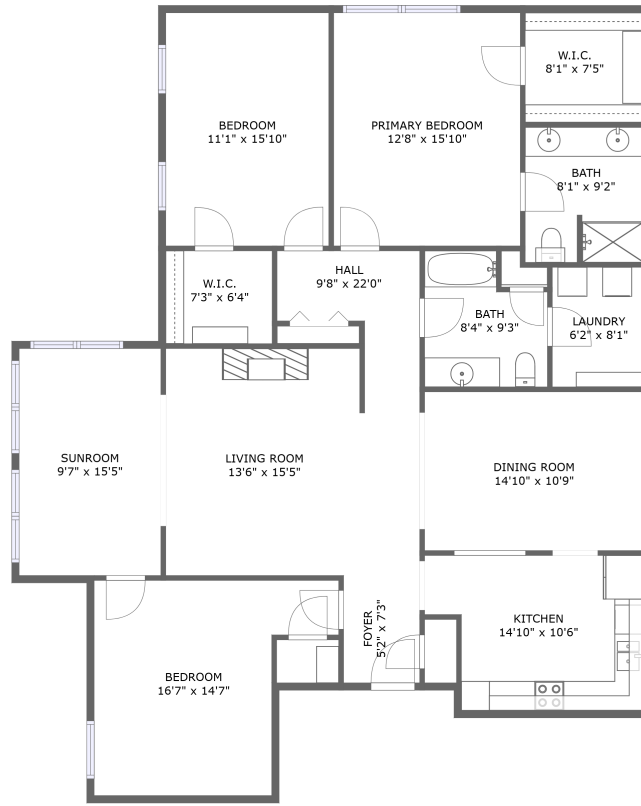


3050 Mcvitty Forest Drive, Crestwood, Cave Spring, Roanoke, Roanoke County, Virginia,




FLOOR 1

Property Summary

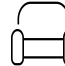
 **0** garages

 **3** bedrooms

 **2** bathrooms

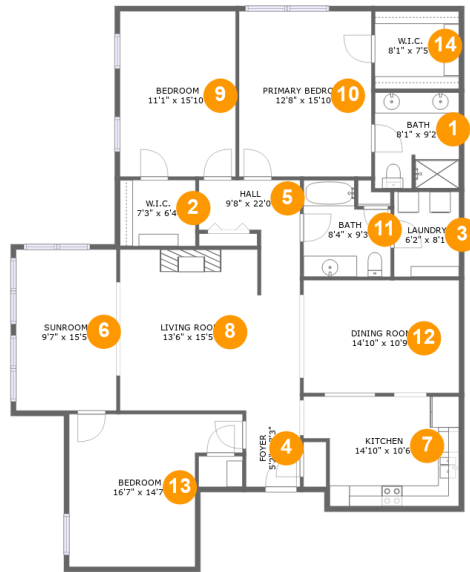
 **0** half baths

 **1** floors

 **1,777** Gross Living Area sqft

 **1,777** total sqft

3050 Mcvitty Forest Drive, Crestwood, Cave Spring, Roanoke, Roanoke County, Virginia,



Room Dimensions

Floor 1

Total sqft: 1777

Living area: 1777

#	Room name	Dimensions	Area (sqft)	Counted as Living Area
1	Bath	8'1" x 9'2"	73 sq. ft	Yes
2	W.i.c.	7'3" x 6'4"	45 sq. ft	Yes
3	Laundry	6'2" x 8'1"	50 sq. ft	Yes
4	Foyer	5'2" x 7'3"	38 sq. ft	Yes
5	Hall	9'8" x 22'0"	110 sq. ft	Yes
6	Sunroom	9'7" x 15'5"	148 sq. ft	Yes
7	Kitchen	14'10" x 10'6"	140 sq. ft	Yes
8	Living Room	13'6" x 15'5"	206 sq. ft	Yes
9	Bedroom	11'1" x 15'10"	175 sq. ft	Yes
10	Primary Bedroom	12'8" x 15'10"	200 sq. ft	Yes
11	Bath	8'4" x 9'3"	67 sq. ft	Yes

Scan captured on Mon, 10 Jun 2024 19:05:18 GMT

Information is calculated by CubiCasa technology; deemed highly reliable but not guaranteed.

**3050 Mcvitty Forest Drive, Crestwood, Cave
Spring, Roanoke, Roanoke County, Virginia,**

#	Room name	Dimensions	Area (sqft)	Counted as Living Area
12	Dining Room	14'10" x 10'9"	162 sq. ft	Yes
13	Bedroom	16'7" x 14'7"	192 sq. ft	Yes
14	W.i.c.	8'1" x 7'5"	60 sq. ft	Yes

3050 Mcvitty Forest Drive, Crestwood, Cave Spring, Roanoke, Roanoke County, Virginia,

1 Floor 1 - Bath



Dimensions: 8'1" x 9'2"
Area: 73 sq. ft
Counted as Living Area:
Yes

Heated: Yes
Finished: Yes
Enclosed: Yes
Contiguous:
Yes
Permitted: Yes
Wet Space: Yes
Addition: No
Conversion: No

2 Floor 1 - W.i.c.

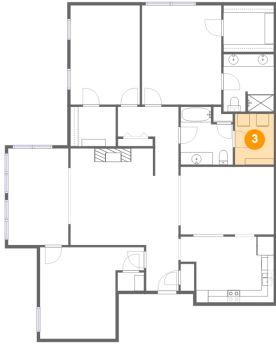


Dimensions: 7'3" x 6'4"
Area: 45 sq. ft
Counted as Living Area:
Yes

Heated: Yes
Finished: Yes
Enclosed: Yes
Contiguous:
Yes
Permitted: Yes
Wet Space: No
Addition: No
Conversion: No

3050 Mcvitty Forest Drive, Crestwood, Cave Spring, Roanoke, Roanoke County, Virginia,

3 Floor 1 - Laundry



Dimensions: 6'2" x 8'1"
Area: 50 sq. ft
Counted as Living Area:
Yes

Heated: Yes
Finished: Yes
Enclosed: Yes
Contiguous:
Yes
Permitted: Yes
Wet Space: No
Addition: No
Conversion: No

4 Floor 1 - Foyer



Dimensions: 5'2" x 7'3"
Area: 38 sq. ft
Counted as Living Area:
Yes

Heated: Yes
Finished: Yes
Enclosed: Yes
Contiguous:
Yes
Permitted: Yes
Wet Space: No
Addition: No
Conversion: No

5 Floor 1 - Hall

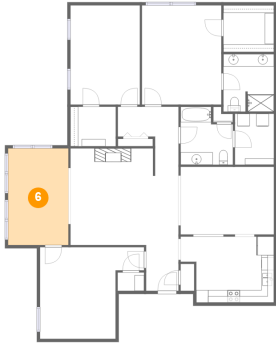


Dimensions: 9'8" x 22'0"
Area: 110 sq. ft
Counted as Living Area:
Yes

Heated: Yes
Finished: Yes
Enclosed: Yes
Contiguous:
Yes
Permitted: Yes
Wet Space: No
Addition: No
Conversion: No

3050 Mcvitty Forest Drive, Crestwood, Cave Spring, Roanoke, Roanoke County, Virginia,

6 Floor 1 - Sunroom



Dimensions: 9'7" x 15'5"
Area: 148 sq. ft
Counted as Living Area:
Yes

Heated: Yes
Finished: Yes
Enclosed: Yes
Contiguous:
Yes
Permitted: Yes
Wet Space: No
Addition: No
Conversion: No

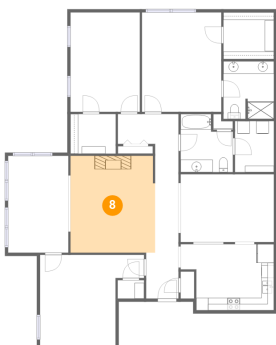
7 Floor 1 - Kitchen



Dimensions: 14'10" x 10'6"
Area: 140 sq. ft
Counted as Living Area:
Yes

Heated: Yes
Finished: Yes
Enclosed: Yes
Contiguous:
Yes
Permitted: Yes
Wet Space: No
Addition: No
Conversion: No

8 Floor 1 - Living Room



Dimensions: 13'6" x 15'5"
Area: 206 sq. ft
Counted as Living Area:
Yes

Heated: Yes
Finished: Yes
Enclosed: Yes
Contiguous:
Yes
Permitted: Yes
Wet Space: No
Addition: No
Conversion: No

3050 Mcvitty Forest Drive, Crestwood, Cave Spring, Roanoke, Roanoke County, Virginia,

9 Floor 1 - Bedroom



Dimensions: 11'1" x 15'10"
Area: 175 sq. ft
Counted as Living Area:
Yes

Heated: Yes
Finished: Yes
Enclosed: Yes
Contiguous:
Yes
Permitted: Yes
Wet Space: No
Addition: No
Conversion: No

10 Floor 1 - Primary Bedroom



Dimensions: 12'8" x 15'10"
Area: 200 sq. ft
Counted as Living Area:
Yes

Heated: Yes
Finished: Yes
Enclosed: Yes
Contiguous:
Yes
Permitted: Yes
Wet Space: No
Addition: No
Conversion: No

11 Floor 1 - Bath



Dimensions: 8'4" x 9'3"
Area: 67 sq. ft
Counted as Living Area:
Yes

Heated: Yes
Finished: Yes
Enclosed: Yes
Contiguous:
Yes
Permitted: Yes
Wet Space: Yes
Addition: No
Conversion: No

3050 Mcvitty Forest Drive, Crestwood, Cave Spring, Roanoke, Roanoke County, Virginia,

12 Floor 1 - Dining Room



Dimensions: 14'10" x 10'9"
Area: 162 sq. ft
Counted as Living Area:
Yes

Heated: Yes
Finished: Yes
Enclosed: Yes
Contiguous:
Yes
Permitted: Yes
Wet Space: No
Addition: No
Conversion: No

13 Floor 1 - Bedroom



Dimensions: 16'7" x 14'7"
Area: 192 sq. ft
Counted as Living Area:
Yes

Heated: Yes
Finished: Yes
Enclosed: Yes
Contiguous:
Yes
Permitted: Yes
Wet Space: No
Addition: No
Conversion: No

14 Floor 1 - W.i.c.



Dimensions: 8'1" x 7'5"
Area: 60 sq. ft
Counted as Living Area:
Yes

Heated: Yes
Finished: Yes
Enclosed: Yes
Contiguous:
Yes
Permitted: Yes
Wet Space: No
Addition: No
Conversion: No