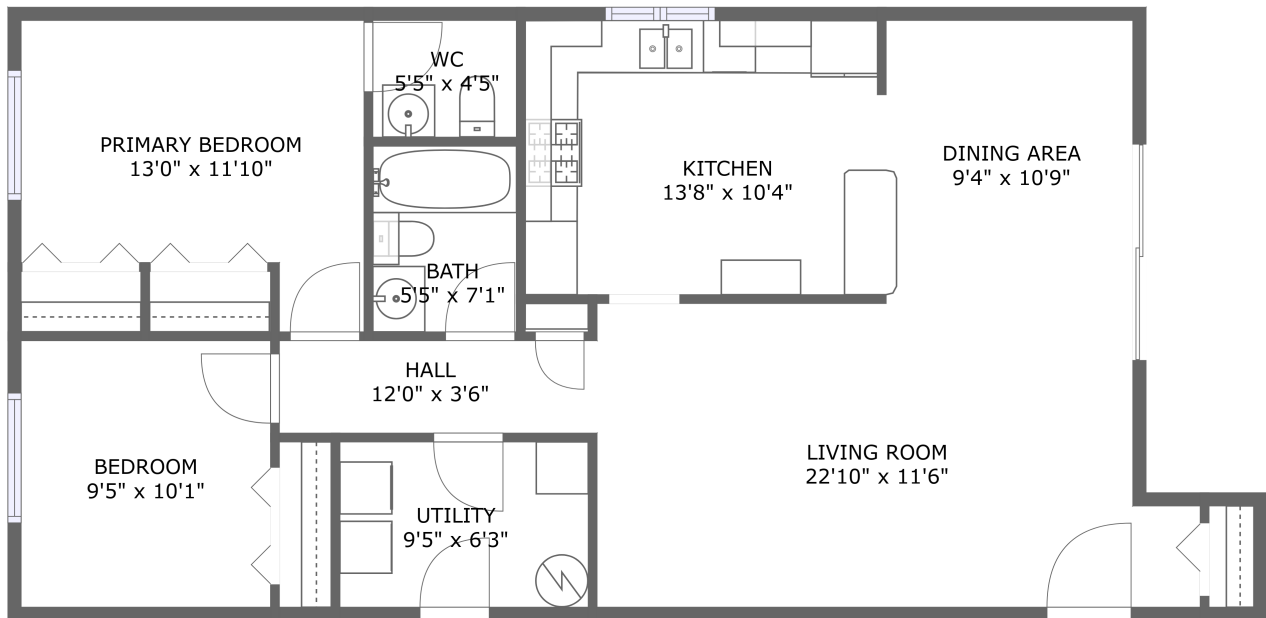


# 16820 81st Ct, 1n, Tinley Park, IL, US, 1n



FLOOR 1

## Property summary


 **0** Garages


 **2** Bedrooms

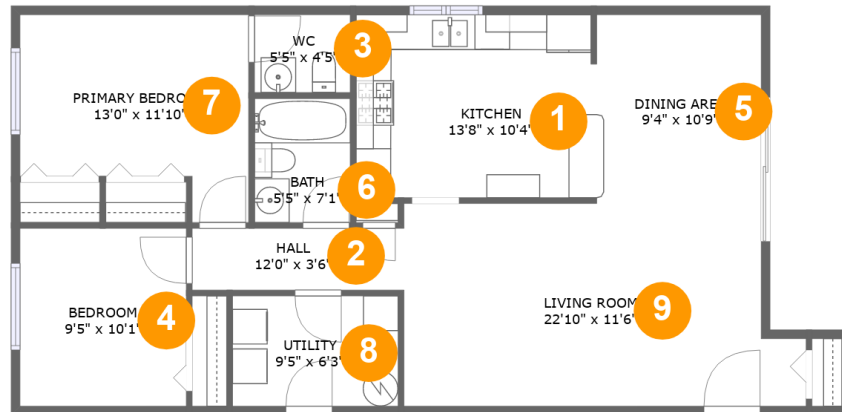
 **1** Bathrooms

 **1** Half baths

 **1** Floors

 **957** Gross living area sqft

 **957** Total sqft

**16820 81st Ct,1n,Tinley Park,IL,US, 1n****Room dimensions****Floor 1****Total sqft: 957    Living area: 957**

| # |                 | Dimensions     | sqft       | Counted as living area |
|---|-----------------|----------------|------------|------------------------|
| 1 | Kitchen         | 13'8" x 10'4"  | 141 sq. ft | Yes                    |
| 2 | Hall            | 12'0" x 3'6"   | 42 sq. ft  | Yes                    |
| 3 | WC              | 5'5" x 4'5"    | 24 sq. ft  | Yes                    |
| 4 | Bedroom         | 9'5" x 10'1"   | 96 sq. ft  | Yes                    |
| 5 | Dining Area     | 9'4" x 10'9"   | 100 sq. ft | Yes                    |
| 6 | Bath            | 5'5" x 7'1"    | 38 sq. ft  | Yes                    |
| 7 | Primary Bedroom | 13'0" x 11'10" | 128 sq. ft | Yes                    |
| 8 | Utility         | 9'5" x 6'3"    | 59 sq. ft  | Yes                    |
| 9 | Living Room     | 22'10" x 11'6" | 244 sq. ft | Yes                    |

# 16820 81st Ct,1n,Tinley Park,IL,US, 1n

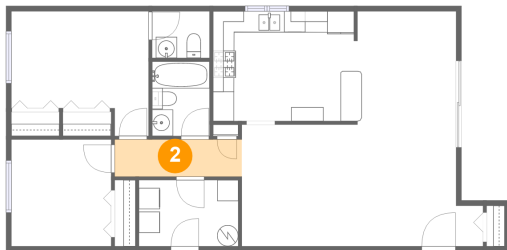
## 1 Floor 1 - Kitchen



Dimensions: 13'8" x 10'4"  
Area: 141 sq. ft  
Counted as living area: Yes

Heated: Yes  
Finished: Yes  
Enclosed: Yes  
Contiguous: Yes  
Permitted: Yes  
Wet space: No  
Addition: No  
Conversion: No

## 2 Floor 1 - Hall

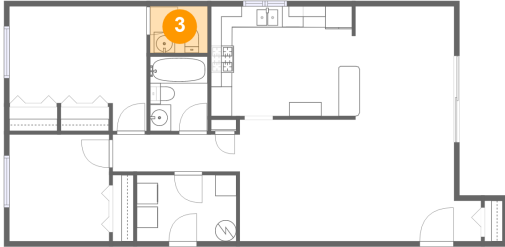


Dimensions: 12'0" x 3'6"  
Area: 42 sq. ft  
Counted as living area: Yes

Heated: Yes  
Finished: Yes  
Enclosed: Yes  
Contiguous: Yes  
Permitted: Yes  
Wet space: No  
Addition: No  
Conversion: No

# 16820 81st Ct, 1n, Tinley Park, IL, US, 1n

## 3 Floor 1 - WC



Dimensions: 5'5" x 4'5"  
Area: 24 sq. ft  
Counted as living area: Yes

Heated: Yes  
Finished: Yes  
Enclosed: Yes  
Contiguous: Yes  
Permitted: Yes  
Wet space: Yes  
Addition: No  
Conversion: No

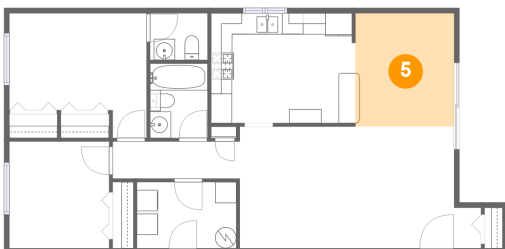
## 4 Floor 1 - Bedroom



Dimensions: 9'5" x 10'1"  
Area: 96 sq. ft  
Counted as living area: Yes

Heated: Yes  
Finished: Yes  
Enclosed: Yes  
Contiguous: Yes  
Permitted: Yes  
Wet space: No  
Addition: No  
Conversion: No

## 5 Floor 1 - Dining Area

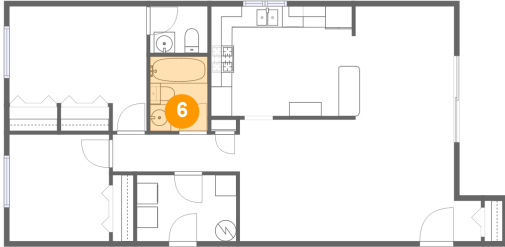


Dimensions: 9'4" x 10'9"  
Area: 100 sq. ft  
Counted as living area: Yes

Heated: Yes  
Finished: Yes  
Enclosed: Yes  
Contiguous: Yes  
Permitted: Yes  
Wet space: No  
Addition: No  
Conversion: No

# 16820 81st Ct, 1n, Tinley Park, IL, US, 1n

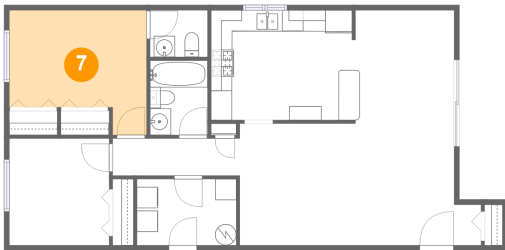
## 6 Floor 1 - Bath



Dimensions: 5'5" x 7'1"  
Area: 38 sq. ft  
Counted as living area: Yes

Heated: Yes  
Finished: Yes  
Enclosed: Yes  
Contiguous: Yes  
Permitted: Yes  
Wet space: Yes  
Addition: No  
Conversion: No

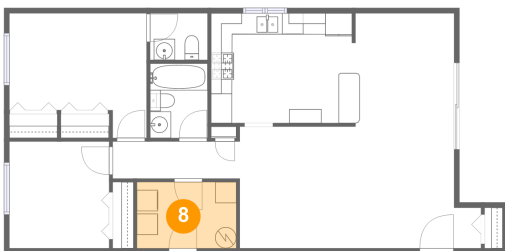
## 7 Floor 1 - Primary Bedroom



Dimensions: 13'0" x 11'10"  
Area: 128 sq. ft  
Counted as living area: Yes

Heated: Yes  
Finished: Yes  
Enclosed: Yes  
Contiguous: Yes  
Permitted: Yes  
Wet space: No  
Addition: No  
Conversion: No

## 8 Floor 1 - Utility



Dimensions: 9'5" x 6'3"  
Area: 59 sq. ft  
Counted as living area: Yes

Heated: Yes  
Finished: Yes  
Enclosed: Yes  
Contiguous: Yes  
Permitted: Yes  
Wet space: No  
Addition: No  
Conversion: No

16820 81st Ct,1n,Tinley Park,IL,US, 1n

## 9 Floor 1 - Living Room



Dimensions: 22'10" x 11'6"  
Area: 244 sq. ft  
Counted as living area: Yes

Heated: Yes  
Finished: Yes  
Enclosed: Yes  
Contiguous: Yes  
Permitted: Yes  
Wet space: No  
Addition: No  
Conversion: No