

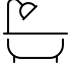



379 Stayman Road, Apple Tree Village, Cloverdale, Botetourt County, Virginia, United

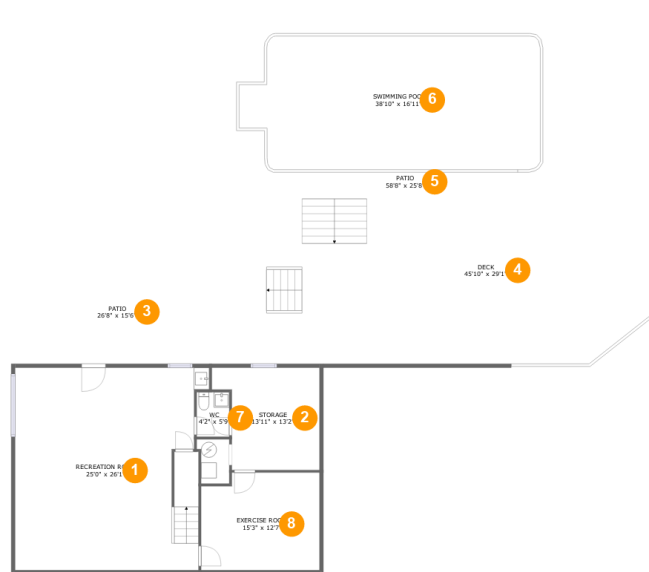


Property Summary

 **1** garages  **3** bedrooms  **2** bathrooms  **2** half baths

 **3** floors  **3,094** Gross Living Area sqft  **6,562** total sqft

379 Stayman Road, Apple Tree Village, Cloverdale, Botetourt County, Virginia, United



Room Dimensions

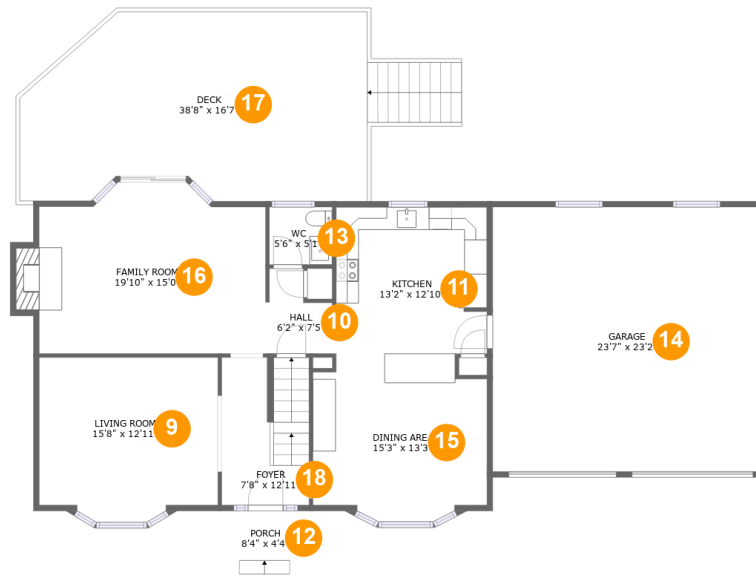
Floor 1

Total sqft: 3217

Living area: 897

#	Room name	Dimensions	Area (sqft)	Counted as Living Area
1	Recreation Room	25'0" x 26'1"	613 sq. ft	Yes
2	Storage	13'11" x 13'2"	156 sq. ft	No
3	Patio	26'8" x 15'6"	345 sq. ft	No
4	Deck	45'10" x 29'1"	999 sq. ft	No
5	Patio	58'8" x 25'8"	1408 sq. ft	No
6	Swimming Pool	38'10" x 16'11"	625 sq. ft	No
7	Wc	4'2" x 5'9"	24 sq. ft	Yes
8	Exercise Room	15'3" x 12'7"	185 sq. ft	Yes

379 Stayman Road, Apple Tree Village, Cloverdale, Botetourt County, Virginia, United



Room Dimensions

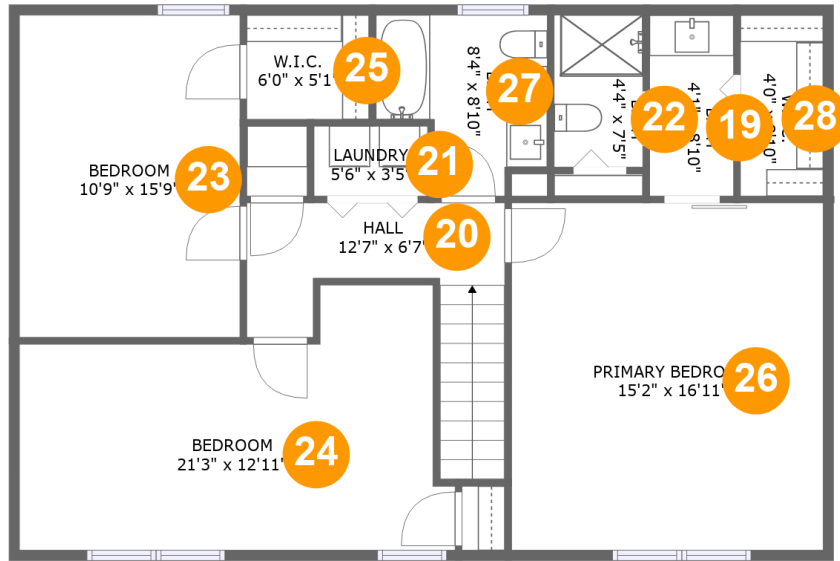
Floor 2

Total sqft: 2256

Living area: 1108

#	Room name	Dimensions	Area (sqft)	Counted as Living Area
9	Living Room	15'8" x 12'11"	202 sq. ft	Yes
10	Hall	6'2" x 7'5"	36 sq. ft	Yes
11	Kitchen	13'2" x 12'10"	169 sq. ft	Yes
12	Porch	8'4" x 4'4"	36 sq. ft	No
13	Wc	5'6" x 5'1"	28 sq. ft	Yes
14	Garage	23'7" x 23'2"	546 sq. ft	No
15	Dining Area	15'3" x 13'3"	192 sq. ft	Yes
16	Family Room	19'10" x 15'0"	283 sq. ft	Yes
17	Deck	38'8" x 16'7"	496 sq. ft	No
18	Foyer	7'8" x 12'11"	96 sq. ft	Yes

379 Stayman Road, Apple Tree Village, Cloverdale, Botetourt County, Virginia, United



Room Dimensions

Floor 3

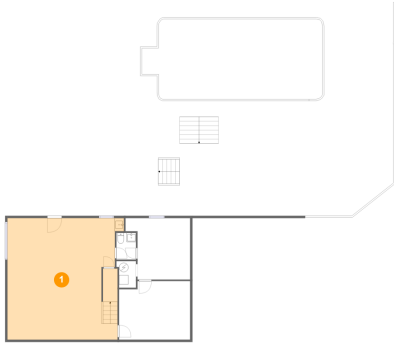
Total sqft: 1089

Living area: 1089

#	Room name	Dimensions	Area (sqft)	Counted as Living Area
19	Bath	4'1" x 8'10"	36 sq. ft	Yes
20	Hall	12'7" x 6'7"	87 sq. ft	Yes
21	Laundry	5'6" x 3'5"	19 sq. ft	Yes
22	Bath	4'4" x 7'5"	32 sq. ft	Yes
23	Bedroom	10'9" x 15'9"	169 sq. ft	Yes
24	Bedroom	21'3" x 12'11"	222 sq. ft	Yes
25	W.i.c.	6'0" x 5'1"	30 sq. ft	Yes
26	Primary Bedroom	15'2" x 16'11"	257 sq. ft	Yes
27	Bath	8'4" x 8'10"	60 sq. ft	Yes
28	W.i.c.	4'0" x 8'10"	36 sq. ft	Yes

379 Stayman Road, Apple Tree Village, Cloverdale, Botetourt County, Virginia, United

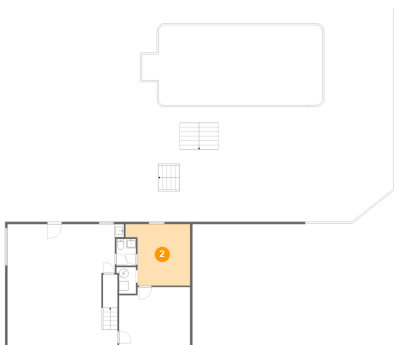
1 Floor 1 - Recreation Room



Dimensions: 25'0" x 26'1"
Area: 613 sq. ft
Counted as Living Area:
Yes

Heated: Yes
Finished: Yes
Enclosed: Yes
Contiguous:
Yes
Permitted: Yes
Wet Space: No
Addition: No
Conversion: No

2 Floor 1 - Storage

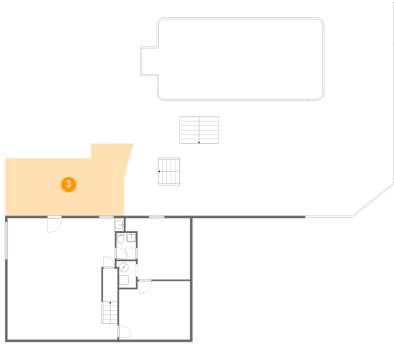


Dimensions: 13'11" x 13'2"
Area: 156 sq. ft
Counted as Living Area: No

Heated: No
Finished: No
Enclosed: No
Contiguous: Yes
Permitted: Yes
Wet Space: No
Addition: No
Conversion: No

379 Stayman Road, Apple Tree Village, Cloverdale, Botetourt County, Virginia, United

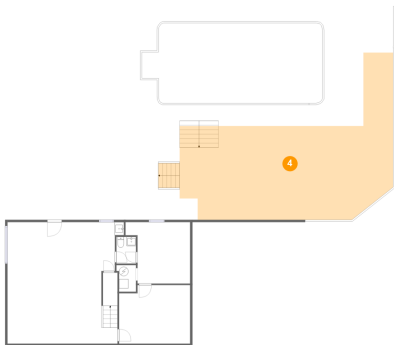
3 Floor 1 - Patio



Dimensions: 26'8" x 15'6"
Area: 345 sq. ft
Counted as Living Area: No

Heated: No
Finished: Yes
Enclosed: No
Contiguous: Yes
Permitted: Yes
Wet Space: No
Addition: No
Conversion: No

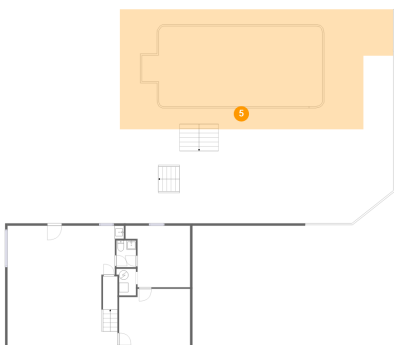
4 Floor 1 - Deck



Dimensions: 45'10" x 29'1"
Area: 999 sq. ft
Counted as Living Area: No

Heated: No
Finished: Yes
Enclosed: No
Contiguous: Yes
Permitted: Yes
Wet Space: No
Addition: No
Conversion: No

5 Floor 1 - Patio

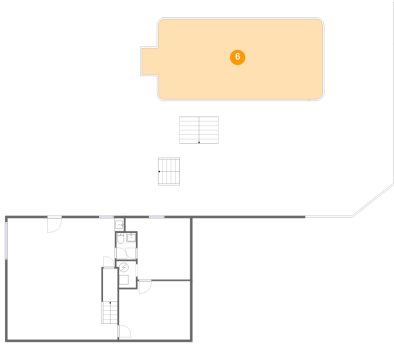


Dimensions: 58'8" x 25'8"
Area: 1408 sq. ft
Counted as Living Area: No

Heated: No
Finished: Yes
Enclosed: No
Contiguous: Yes
Permitted: Yes
Wet Space: No
Addition: No
Conversion: No

379 Stayman Road, Apple Tree Village, Cloverdale, Botetourt County, Virginia, United

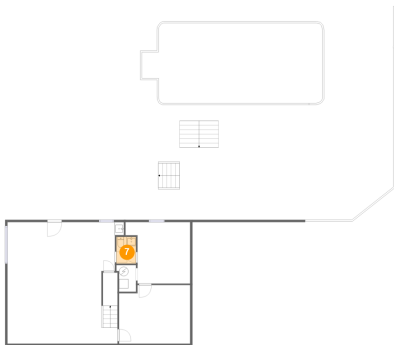
6 Floor 1 - Swimming Pool



Dimensions: 38'10" x 16'11"
Area: 625 sq. ft
Counted as Living Area: No

Heated: No
Finished: No
Enclosed: No
Contiguous: Yes
Permitted: No
Wet Space: No
Addition: No
Conversion: No

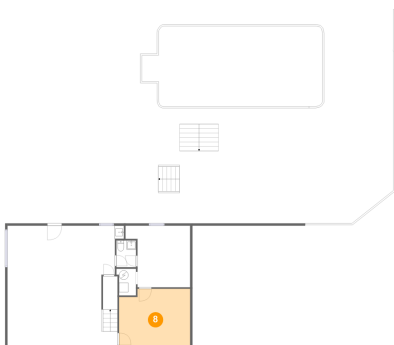
7 Floor 1 - Wc



Dimensions: 4'2" x 5'9"
Area: 24 sq. ft
Counted as Living Area:
Yes

Heated: Yes
Finished: Yes
Enclosed: Yes
Contiguous:
Yes
Permitted: Yes
Wet Space: Yes
Addition: No
Conversion: No

8 Floor 1 - Exercise Room

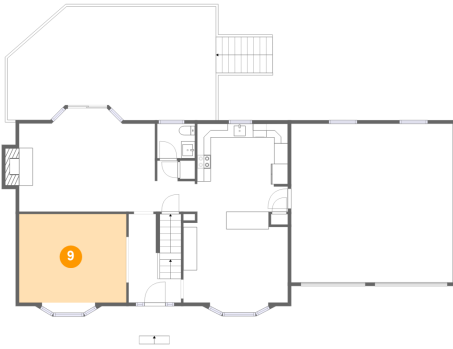


Dimensions: 15'3" x 12'7"
Area: 185 sq. ft
Counted as Living Area:
Yes

Heated: Yes
Finished: Yes
Enclosed: Yes
Contiguous:
Yes
Permitted: Yes
Wet Space: No
Addition: No
Conversion: No

379 Stayman Road, Apple Tree Village, Cloverdale, Botetourt County, Virginia, United

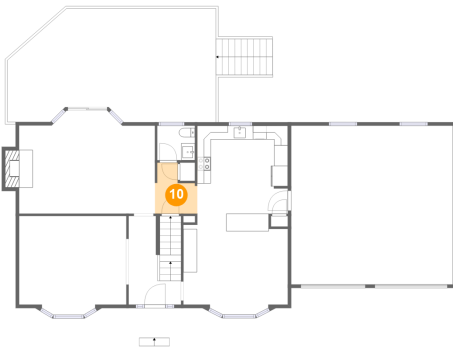
9 Floor 2 - Living Room



Dimensions: 15'8" x 12'11"
Area: 202 sq. ft
Counted as Living Area:
Yes

Heated: Yes
Finished: Yes
Enclosed: Yes
Contiguous:
Yes
Permitted: Yes
Wet Space: No
Addition: No
Conversion: No

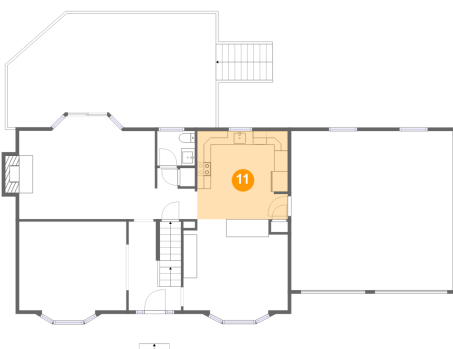
10 Floor 2 - Hall



Dimensions: 6'2" x 7'5"
Area: 36 sq. ft
Counted as Living Area:
Yes

Heated: Yes
Finished: Yes
Enclosed: Yes
Contiguous:
Yes
Permitted: Yes
Wet Space: No
Addition: No
Conversion: No

11 Floor 2 - Kitchen

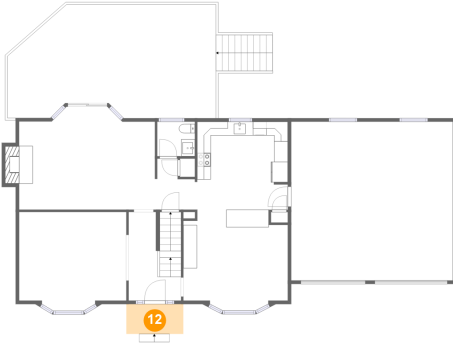


Dimensions: 13'2" x 12'10"
Area: 169 sq. ft
Counted as Living Area:
Yes

Heated: Yes
Finished: Yes
Enclosed: Yes
Contiguous:
Yes
Permitted: Yes
Wet Space: No
Addition: No
Conversion: No

379 Stayman Road, Apple Tree Village, Cloverdale, Botetourt County, Virginia, United

12 Floor 2 - Porch



Dimensions: 8'4" x 4'4"
Area: 36 sq. ft
Counted as Living Area: No

Heated: No
Finished: Yes
Enclosed: No
Contiguous: Yes
Permitted: Yes
Wet Space: No
Addition: No
Conversion: No

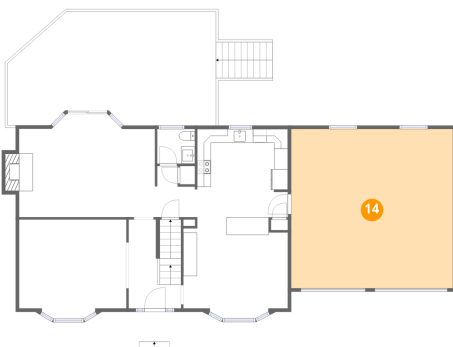
13 Floor 2 - Wc



Dimensions: 5'6" x 5'1"
Area: 28 sq. ft
Counted as Living Area: Yes

Heated: Yes
Finished: Yes
Enclosed: Yes
Contiguous: Yes
Permitted: Yes
Wet Space: Yes
Addition: No
Conversion: No

14 Floor 2 - Garage

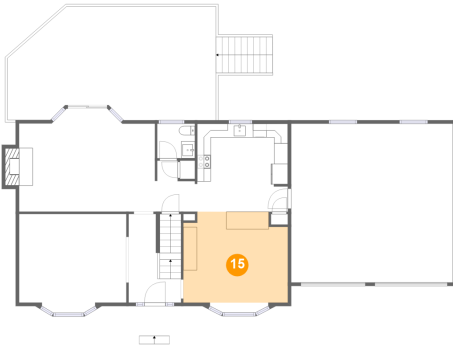


Dimensions: 23'7" x 23'2"
Area: 546 sq. ft
Counted as Living Area: No

Heated: No
Finished: No
Enclosed: Yes
Contiguous: Yes
Permitted: Yes
Wet Space: No
Addition: No
Conversion: No

379 Stayman Road, Apple Tree Village, Cloverdale, Botetourt County, Virginia, United

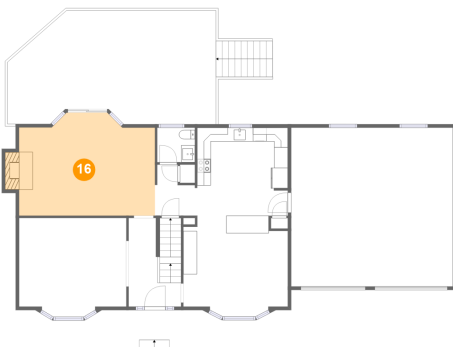
15 Floor 2 - Dining Area



Dimensions: 15'3" x 13'3"
Area: 192 sq. ft
Counted as Living Area:
Yes

Heated: Yes
Finished: Yes
Enclosed: Yes
Contiguous:
Yes
Permitted: Yes
Wet Space: No
Addition: No
Conversion: No

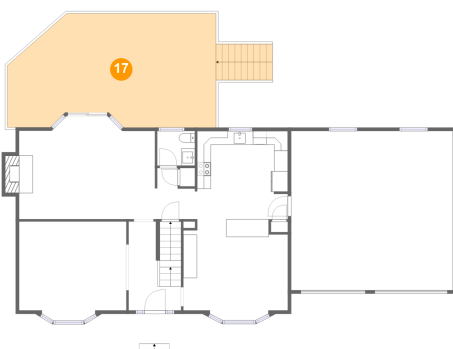
16 Floor 2 - Family Room



Dimensions: 19'10" x 15'0"
Area: 283 sq. ft
Counted as Living Area:
Yes

Heated: Yes
Finished: Yes
Enclosed: Yes
Contiguous:
Yes
Permitted: Yes
Wet Space: No
Addition: No
Conversion: No

17 Floor 2 - Deck

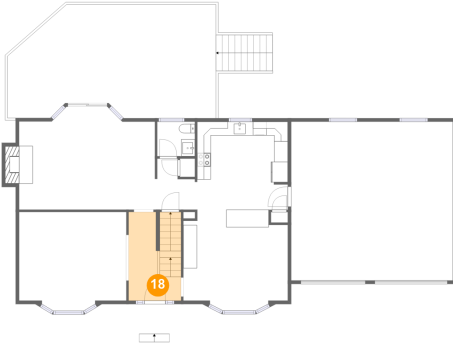


Dimensions: 38'8" x 16'7"
Area: 496 sq. ft
Counted as Living Area: No

Heated: No
Finished: Yes
Enclosed: No
Contiguous: Yes
Permitted: Yes
Wet Space: No
Addition: No
Conversion: No

379 Stayman Road, Apple Tree Village, Cloverdale, Botetourt County, Virginia, United

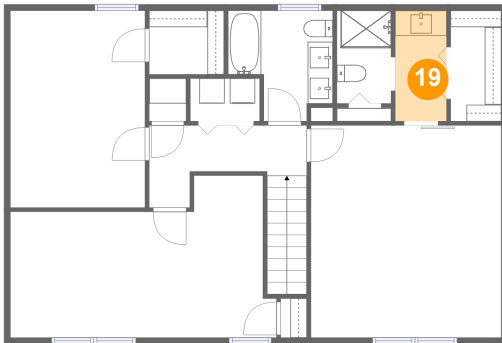
18 Floor 2 - Foyer



Dimensions: 7'8" x 12'11"
Area: 96 sq. ft
Counted as Living Area:
Yes

Heated: Yes
Finished: Yes
Enclosed: Yes
Contiguous:
Yes
Permitted: Yes
Wet Space: No
Addition: No
Conversion: No

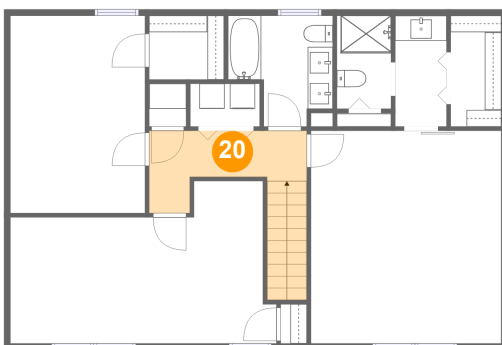
19 Floor 3 - Bath



Dimensions: 4'1" x 8'10"
Area: 36 sq. ft
Counted as Living Area:
Yes

Heated: Yes
Finished: Yes
Enclosed: Yes
Contiguous:
Yes
Permitted: Yes
Wet Space: Yes
Addition: No
Conversion: No

20 Floor 3 - Hall

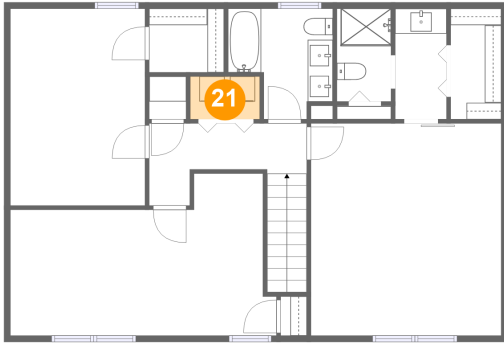


Dimensions: 12'7" x 6'7"
Area: 87 sq. ft
Counted as Living Area:
Yes

Heated: Yes
Finished: Yes
Enclosed: Yes
Contiguous:
Yes
Permitted: Yes
Wet Space: No
Addition: No
Conversion: No

379 Stayman Road, Apple Tree Village, Cloverdale, Botetourt County, Virginia, United

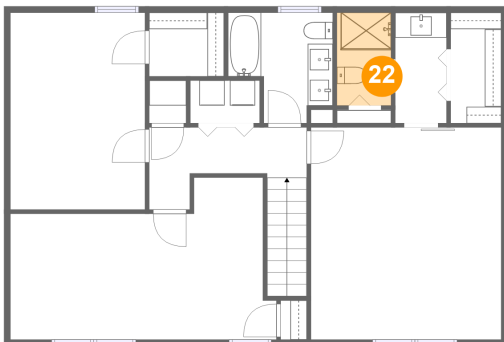
21 Floor 3 - Laundry



Dimensions: 5'6" x 3'5"
Area: 19 sq. ft
Counted as Living Area:
Yes

Heated: Yes
Finished: Yes
Enclosed: Yes
Contiguous:
Yes
Permitted: Yes
Wet Space: No
Addition: No
Conversion: No

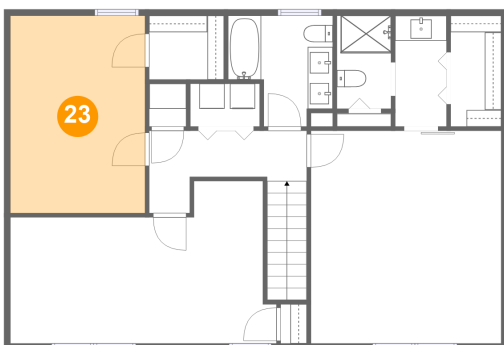
22 Floor 3 - Bath



Dimensions: 4'4" x 7'5"
Area: 32 sq. ft
Counted as Living Area:
Yes

Heated: Yes
Finished: Yes
Enclosed: Yes
Contiguous:
Yes
Permitted: Yes
Wet Space: Yes
Addition: No
Conversion: No

23 Floor 3 - Bedroom

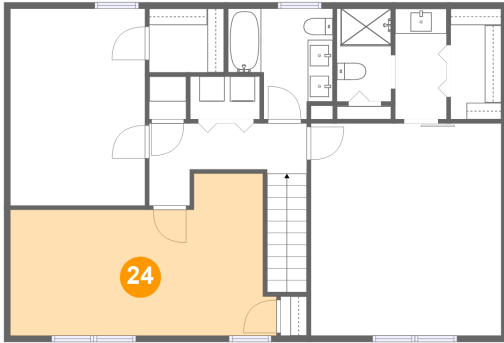


Dimensions: 10'9" x 15'9"
Area: 169 sq. ft
Counted as Living Area:
Yes

Heated: Yes
Finished: Yes
Enclosed: Yes
Contiguous:
Yes
Permitted: Yes
Wet Space: No
Addition: No
Conversion: No

379 Stayman Road, Apple Tree Village, Cloverdale, Botetourt County, Virginia, United

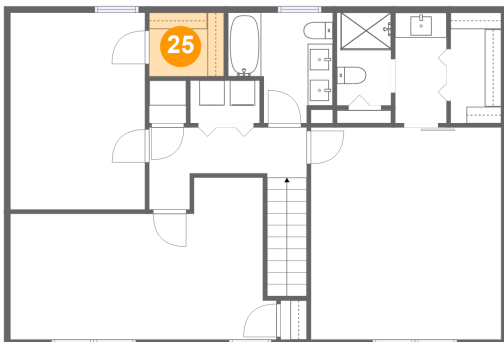
24 Floor 3 - Bedroom



Dimensions: 21'3" x 12'11"
Area: 222 sq. ft
Counted as Living Area:
Yes

Heated: Yes
Finished: Yes
Enclosed: Yes
Contiguous:
Yes
Permitted: Yes
Wet Space: No
Addition: No
Conversion: No

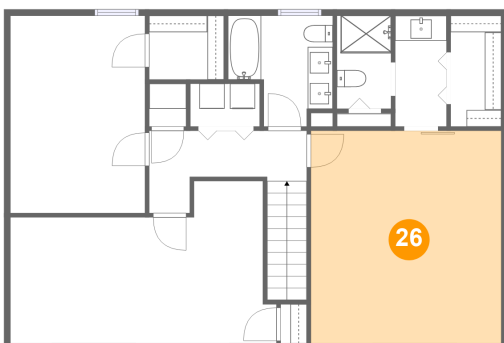
25 Floor 3 - W.i.c.



Dimensions: 6'0" x 5'1"
Area: 30 sq. ft
Counted as Living Area:
Yes

Heated: Yes
Finished: Yes
Enclosed: Yes
Contiguous:
Yes
Permitted: Yes
Wet Space: No
Addition: No
Conversion: No

26 Floor 3 - Primary Bedroom

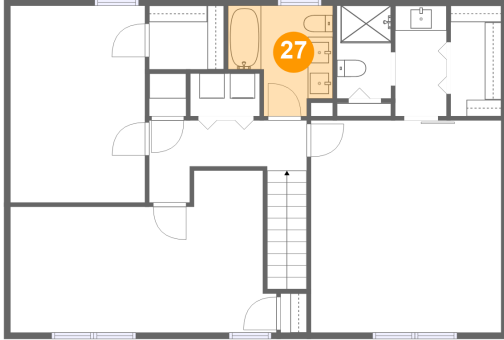


Dimensions: 15'2" x 16'11"
Area: 257 sq. ft
Counted as Living Area:
Yes

Heated: Yes
Finished: Yes
Enclosed: Yes
Contiguous:
Yes
Permitted: Yes
Wet Space: No
Addition: No
Conversion: No

379 Stayman Road, Apple Tree Village, Cloverdale, Botetourt County, Virginia, United

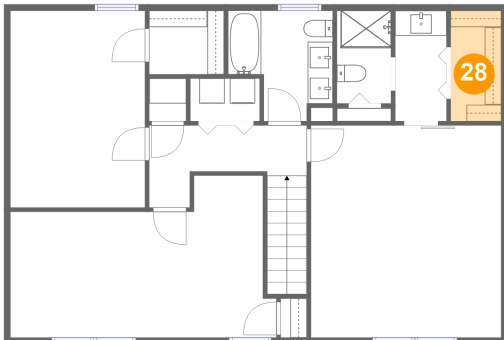
27 Floor 3 - Bath



Dimensions: 8'4" x 8'10"
Area: 60 sq. ft
Counted as Living Area:
Yes

Heated: Yes
Finished: Yes
Enclosed: Yes
Contiguous:
Yes
Permitted: Yes
Wet Space: Yes
Addition: No
Conversion: No

28 Floor 3 - W.i.c.



Dimensions: 4'0" x 8'10"
Area: 36 sq. ft
Counted as Living Area:
Yes

Heated: Yes
Finished: Yes
Enclosed: Yes
Contiguous:
Yes
Permitted: Yes
Wet Space: No
Addition: No
Conversion: No