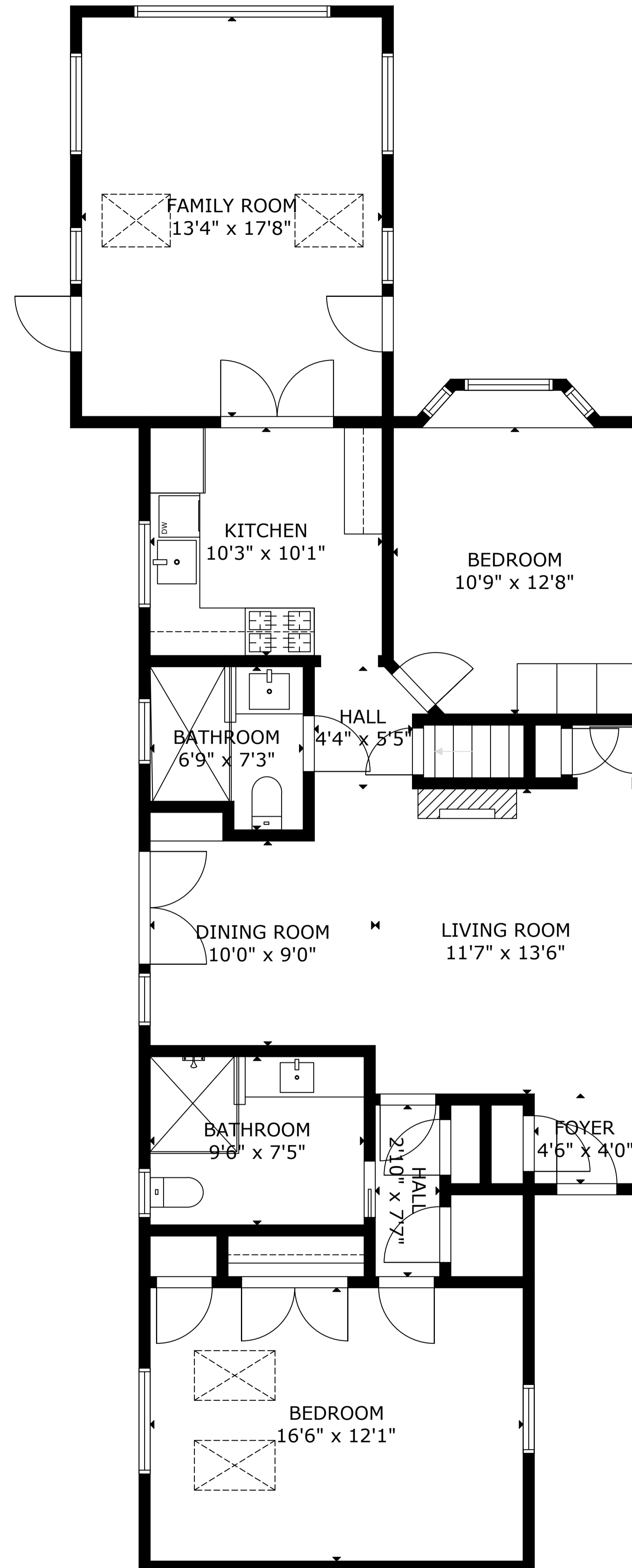


# 126 Bay Street Osterville



GROSS INTERNAL AREA  
TOTAL: 2,172 sq ft

FLOOR 1: 928 sq ft, FLOOR 2: 1,244 sq ft

SIZE AND DIMENSIONS ARE APPROXIMATE, ACTUAL MAY VARY



**AERIAL ADVANTAGE**  
VIDEO | PHOTOGRAPHY

[www.aerialadvantagecapecod.com](http://www.aerialadvantagecapecod.com)  
508-419-6149