


18809 Porterfield Way, Germantown View, Germantown, Montgomery County, Maryland, United



Property summary

 **0** Garages

 **4** Bedrooms

 **3** Bathrooms

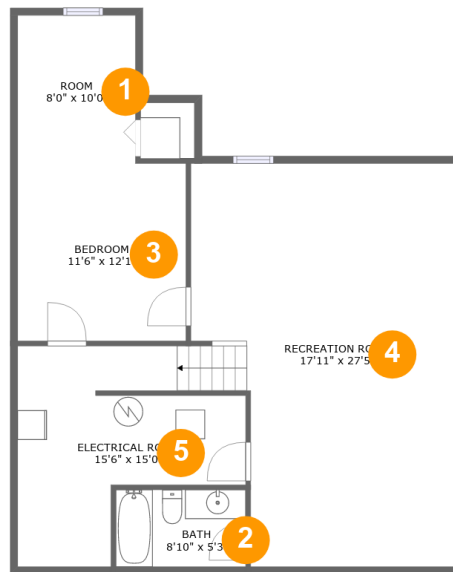
 **1** Half baths

 **3** Floors

 **2,950** Gross living area sqft

 **3,140** Total sqft

18809 Porterfield Way, Germantown View, Germantown, Montgomery County, Maryland, United



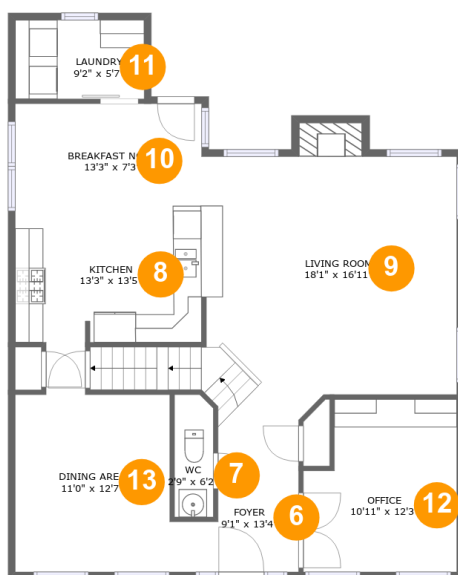
Room dimensions

Floor 1

Total sqft: 982 Living area: 805

#		Dimensions	sqft	Counted as living area
1	Room	8'0" x 10'0"	81 sq. ft	Yes
2	Bath	8'10" x 5'3"	46 sq. ft	Yes
3	Bedroom	11'6" x 12'1"	139 sq. ft	Yes
4	Recreation Room	17'11" x 27'5"	446 sq. ft	Yes
5	Electrical Room	15'6" x 15'0"	165 sq. ft	No

18809 Porterfield Way, Germantown View, Germantown, Montgomery County, Maryland, United



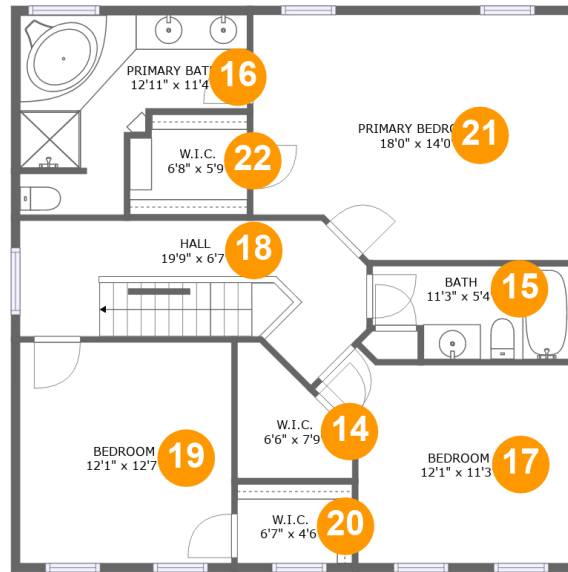
Room dimensions

Floor 2

Total sqft: 1114 Living area: 1101

#		Dimensions	sqft	Counted as living area
6	Foyer	9'1" x 13'4"	125 sq. ft	Yes
7	WC	2'9" x 6'2"	23 sq. ft	Yes
8	Kitchen	13'3" x 13'5"	138 sq. ft	Yes
9	Living Room	18'1" x 16'11"	302 sq. ft	Yes
10	Breakfast Nook	13'3" x 7'3"	96 sq. ft	Yes
11	Laundry	9'2" x 5'7"	51 sq. ft	Yes
12	Office	10'11" x 12'3"	122 sq. ft	Yes
13	Dining Area	11'0" x 12'7"	138 sq. ft	Yes

18809 Porterfield Way, Germantown View, Germantown, Montgomery County, Maryland, United



Room dimensions

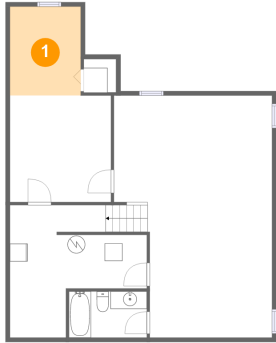
Floor 3

Total sqft: 1044 Living area: 1044

#		Dimensions	sqft	Counted as living area
14	W.I.C.	6'6" x 7'9"	37 sq. ft	Yes
15	Bath	11'3" x 5'4"	54 sq. ft	Yes
16	Primary Bath	12'11" x 11'4"	106 sq. ft	Yes
17	Bedroom	12'1" x 11'3"	143 sq. ft	Yes
18	Hall	19'9" x 6'7"	135 sq. ft	Yes
19	Bedroom	12'1" x 12'7"	152 sq. ft	Yes
20	W.I.C.	6'7" x 4'6"	30 sq. ft	Yes
21	Primary Bedroom	18'0" x 14'0"	239 sq. ft	Yes
22	W.I.C.	6'8" x 5'9"	37 sq. ft	Yes

18809 Porterfield Way, Germantown View, Germantown, Montgomery County, Maryland, United

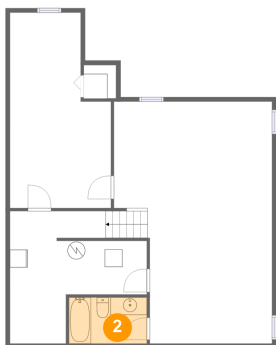
1 Floor 1 - Room



Dimensions: 8'0" x 10'0"
Area: 81 sq. ft
Counted as living area: Yes

Heated: Yes
Finished: Yes
Enclosed: Yes
Contiguous: Yes
Permitted: Yes
Wet space: No
Addition: No
Conversion: No

2 Floor 1 - Bath



Dimensions: 8'10" x 5'3"
Area: 46 sq. ft
Counted as living area: Yes

Heated: Yes
Finished: Yes
Enclosed: Yes
Contiguous: Yes
Permitted: Yes
Wet space: Yes
Addition: No
Conversion: No

18809 Porterfield Way, Germantown View, Germantown, Montgomery County, Maryland, United

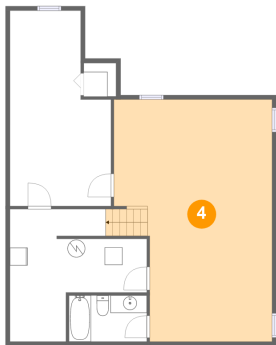
3 Floor 1 - Bedroom



Dimensions: 11'6" x 12'1"
Area: 139 sq. ft
Counted as living area: Yes

Heated: Yes
Finished: Yes
Enclosed: Yes
Contiguous: Yes
Permitted: Yes
Wet space: No
Addition: No
Conversion: No

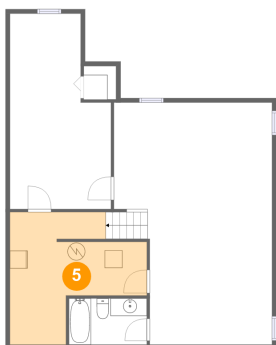
4 Floor 1 - Recreation Room



Dimensions: 17'11" x 27'5"
Area: 446 sq. ft
Counted as living area: Yes

Heated: Yes
Finished: Yes
Enclosed: Yes
Contiguous: Yes
Permitted: Yes
Wet space: No
Addition: No
Conversion: No

5 Floor 1 - Electrical Room



Dimensions: 15'6" x 15'0"
Area: 165 sq. ft
Counted as living area: No

Heated: No
Finished: No
Enclosed: Yes
Contiguous: Yes
Permitted: Yes
Wet space: No
Addition: No
Conversion: No

18809 Porterfield Way, Germantown View, Germantown, Montgomery County, Maryland, United

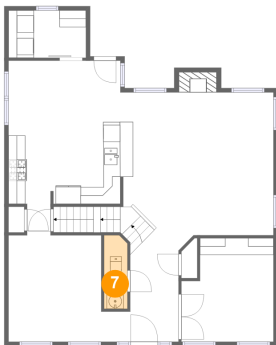
6 Floor 2 - Foyer



Dimensions: 9'1" x 13'4"
Area: 125 sq. ft
Counted as living area: Yes

Heated: Yes
Finished: Yes
Enclosed: Yes
Contiguous: Yes
Permitted: Yes
Wet space: No
Addition: No
Conversion: No

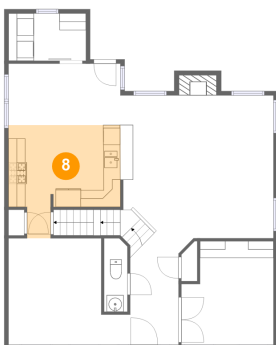
7 Floor 2 - WC



Dimensions: 2'9" x 6'2"
Area: 23 sq. ft
Counted as living area: Yes

Heated: Yes
Finished: Yes
Enclosed: Yes
Contiguous: Yes
Permitted: Yes
Wet space: Yes
Addition: No
Conversion: No

8 Floor 2 - Kitchen

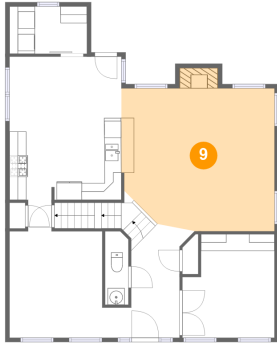


Dimensions: 13'3" x 13'5"
Area: 138 sq. ft
Counted as living area: Yes

Heated: Yes
Finished: Yes
Enclosed: Yes
Contiguous: Yes
Permitted: Yes
Wet space: No
Addition: No
Conversion: No

18809 Porterfield Way, Germantown View, Germantown, Montgomery County, Maryland, United

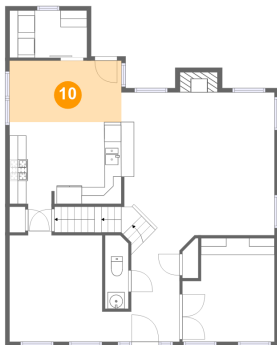
9 Floor 2 - Living Room



Dimensions: 18'1" x 16'11"
Area: 302 sq. ft
Counted as living area: Yes

Heated: Yes
Finished: Yes
Enclosed: Yes
Contiguous: Yes
Permitted: Yes
Wet space: No
Addition: No
Conversion: No

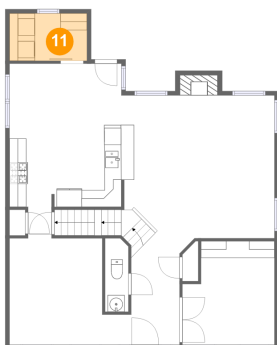
10 Floor 2 - Breakfast Nook



Dimensions: 13'3" x 7'3"
Area: 96 sq. ft
Counted as living area: Yes

Heated: Yes
Finished: Yes
Enclosed: Yes
Contiguous: Yes
Permitted: Yes
Wet space: No
Addition: No
Conversion: No

11 Floor 2 - Laundry

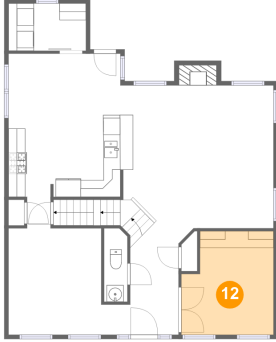


Dimensions: 9'2" x 5'7"
Area: 51 sq. ft
Counted as living area: Yes

Heated: Yes
Finished: Yes
Enclosed: Yes
Contiguous: Yes
Permitted: Yes
Wet space: No
Addition: No
Conversion: No

18809 Porterfield Way, Germantown View, Germantown, Montgomery County, Maryland, United

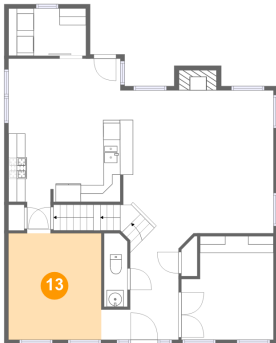
12 Floor 2 - Office



Dimensions: 10'11" x 12'3"
Area: 122 sq. ft
Counted as living area: Yes

Heated: Yes
Finished: Yes
Enclosed: Yes
Contiguous: Yes
Permitted: Yes
Wet space: No
Addition: No
Conversion: No

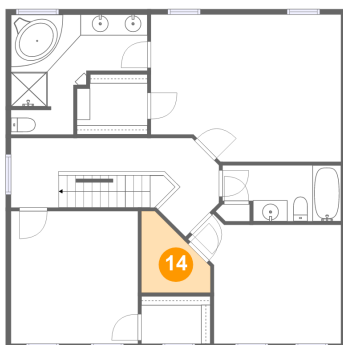
13 Floor 2 - Dining Area



Dimensions: 11'0" x 12'7"
Area: 138 sq. ft
Counted as living area: Yes

Heated: Yes
Finished: Yes
Enclosed: Yes
Contiguous: Yes
Permitted: Yes
Wet space: No
Addition: No
Conversion: No

14 Floor 3 - W.I.C.

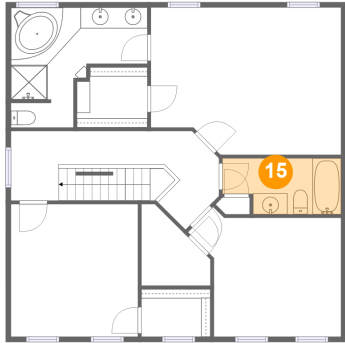


Dimensions: 6'6" x 7'9"
Area: 37 sq. ft
Counted as living area: Yes

Heated: Yes
Finished: Yes
Enclosed: Yes
Contiguous: Yes
Permitted: Yes
Wet space: No
Addition: No
Conversion: No

18809 Porterfield Way, Germantown View, Germantown, Montgomery County, Maryland, United

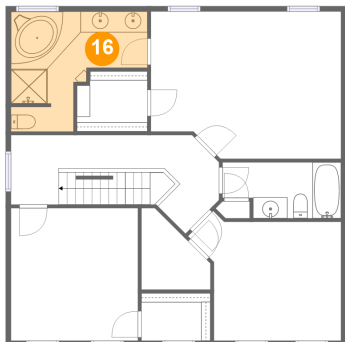
15 Floor 3 - Bath



Dimensions: 11'3" x 5'4"
Area: 54 sq. ft
Counted as living area: Yes

Heated: Yes
Finished: Yes
Enclosed: Yes
Contiguous: Yes
Permitted: Yes
Wet space: Yes
Addition: No
Conversion: No

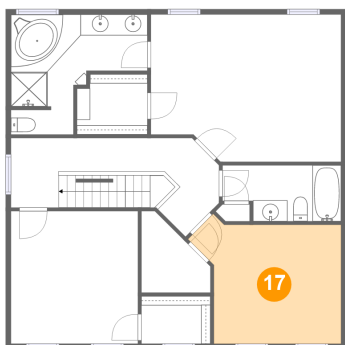
16 Floor 3 - Primary Bath



Dimensions: 12'11" x 11'4"
Area: 106 sq. ft
Counted as living area: Yes

Heated: Yes
Finished: Yes
Enclosed: Yes
Contiguous: Yes
Permitted: Yes
Wet space: Yes
Addition: No
Conversion: No

17 Floor 3 - Bedroom

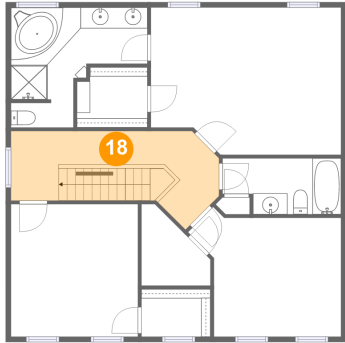


Dimensions: 12'1" x 11'3"
Area: 143 sq. ft
Counted as living area: Yes

Heated: Yes
Finished: Yes
Enclosed: Yes
Contiguous: Yes
Permitted: Yes
Wet space: No
Addition: No
Conversion: No

18809 Porterfield Way, Germantown View, Germantown, Montgomery County, Maryland, United

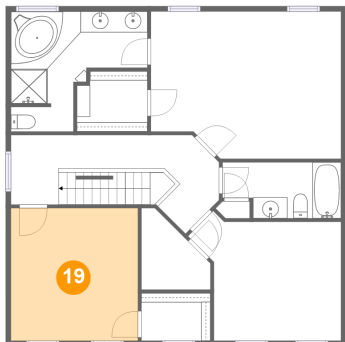
18 Floor 3 - Hall



Dimensions: 19'9" x 6'7"
Area: 135 sq. ft
Counted as living area: Yes

Heated: Yes
Finished: Yes
Enclosed: Yes
Contiguous: Yes
Permitted: Yes
Wet space: No
Addition: No
Conversion: No

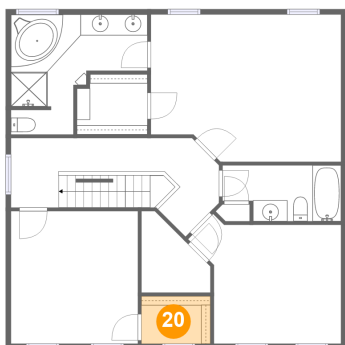
19 Floor 3 - Bedroom



Dimensions: 12'1" x 12'7"
Area: 152 sq. ft
Counted as living area: Yes

Heated: Yes
Finished: Yes
Enclosed: Yes
Contiguous: Yes
Permitted: Yes
Wet space: No
Addition: No
Conversion: No

20 Floor 3 - W.I.C.

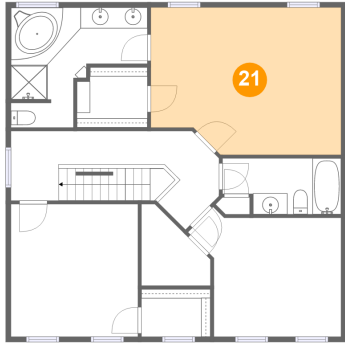


Dimensions: 6'7" x 4'6"
Area: 30 sq. ft
Counted as living area: Yes

Heated: Yes
Finished: Yes
Enclosed: Yes
Contiguous: Yes
Permitted: Yes
Wet space: No
Addition: No
Conversion: No

**18809 Porterfield Way, Germantown View,
Germantown, Montgomery County, Maryland, United**

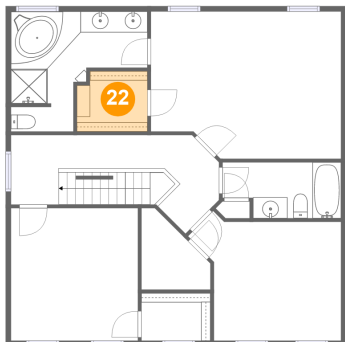
21 Floor 3 - Primary Bedroom



Dimensions: 18'0" x 14'0"
Area: 239 sq. ft
Counted as living area: Yes

Heated: Yes
Finished: Yes
Enclosed: Yes
Contiguous: Yes
Permitted: Yes
Wet space: No
Addition: No
Conversion: No

22 Floor 3 - W.I.C.



Dimensions: 6'8" x 5'9"
Area: 37 sq. ft
Counted as living area: Yes

Heated: Yes
Finished: Yes
Enclosed: Yes
Contiguous: Yes
Permitted: Yes
Wet space: No
Addition: No
Conversion: No