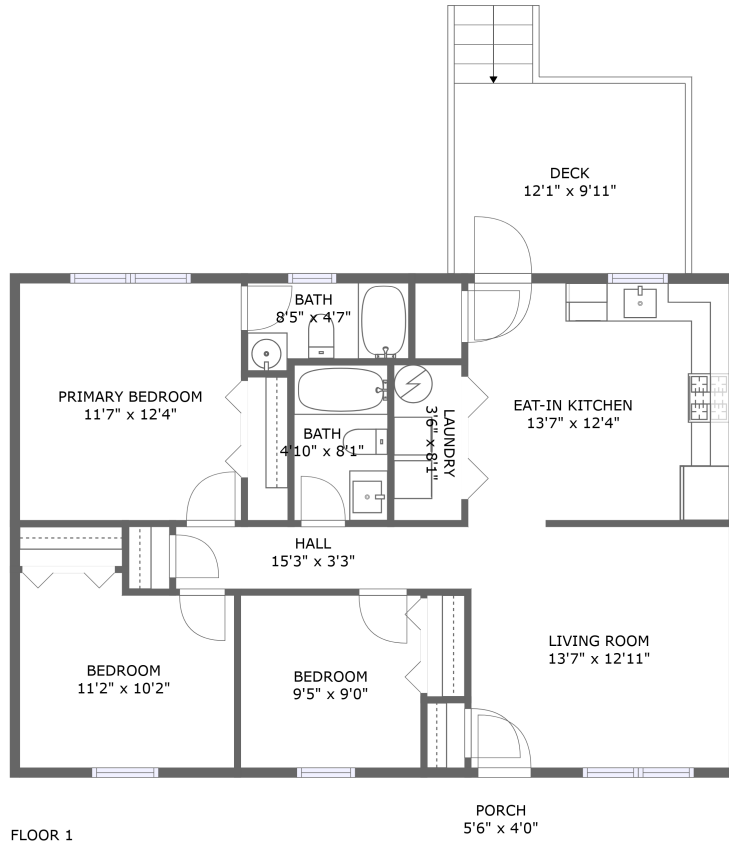


622 Palmer Avenue, Kimball Acres, Salem, Salem, Virginia, United States, 24153




Property Summary


 **0** garages

 **3** bedrooms

 **2** bathrooms

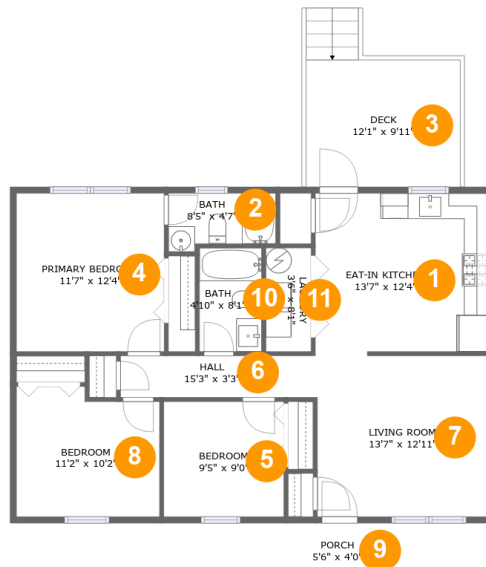
 **0** half baths

 **1** floors

 **997** Gross Living Area sqft

 **1,155** total sqft

622 Palmer Avenue, Kimball Acres, Salem, Salem, Virginia, United States, 24153



Room Dimensions

Floor 1

Total sqft: 1155

Living area: 997

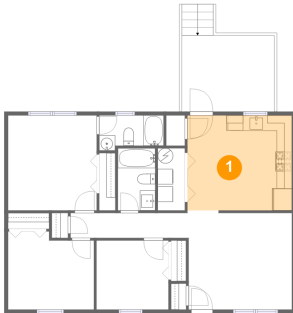
#	Room name	Dimensions	Area (sqft)	Counted as Living Area
1	Eat-in Kitchen	13'7" x 12'4"	168 sq. ft	Yes
2	Bath	8'5" x 4'7"	34 sq. ft	Yes
3	Deck	12'1" x 9'11"	136 sq. ft	No
4	Primary Bedroom	11'7" x 12'4"	143 sq. ft	Yes
5	Bedroom	9'5" x 9'0"	84 sq. ft	Yes
6	Hall	15'3" x 3'3"	49 sq. ft	Yes
7	Living Room	13'7" x 12'11"	171 sq. ft	Yes
8	Bedroom	11'2" x 10'2"	107 sq. ft	Yes
9	Porch	5'6" x 4'0"	22 sq. ft	No
10	Bath	4'10" x 8'1"	39 sq. ft	Yes
11	Laundry	3'6" x 8'1"	29 sq. ft	Yes

Scan captured on Wed, 26 Jun 2024 15:25:05 GMT

Information is calculated by CubiCasa technology; deemed highly reliable but not guaranteed.

622 Palmer Avenue, Kimball Acres, Salem, Salem, Virginia, United States, 24153

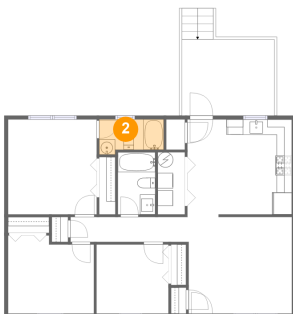
1 Floor 1 - Eat-in Kitchen



Dimensions: 13'7" x 12'4"
Area: 168 sq. ft
Counted as Living Area:
Yes

Heated: Yes
Finished: Yes
Enclosed: Yes
Contiguous:
Yes
Permitted: Yes
Wet Space: No
Addition: No
Conversion: No

2 Floor 1 - Bath



Dimensions: 8'5" x 4'7"
Area: 34 sq. ft
Counted as Living Area:
Yes

Heated: Yes
Finished: Yes
Enclosed: Yes
Contiguous:
Yes
Permitted: Yes
Wet Space: Yes
Addition: No
Conversion: No

622 Palmer Avenue, Kimball Acres, Salem, Salem, Virginia, United States, 24153

3 Floor 1 - Deck



Dimensions: 12'1" x 9'11"
Area: 136 sq. ft
Counted as Living Area: No

Heated: No
Finished: Yes
Enclosed: No
Contiguous: Yes
Permitted: Yes
Wet Space: No
Addition: No
Conversion: No

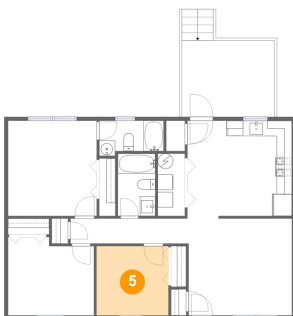
4 Floor 1 - Primary Bedroom



Dimensions: 11'7" x 12'4"
Area: 143 sq. ft
Counted as Living Area:
Yes

Heated: Yes
Finished: Yes
Enclosed: Yes
Contiguous:
Yes
Permitted: Yes
Wet Space: No
Addition: No
Conversion: No

5 Floor 1 - Bedroom

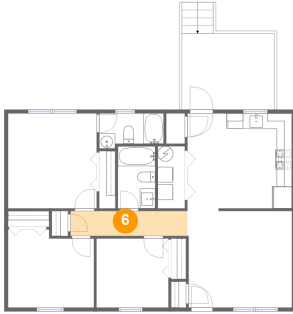


Dimensions: 9'5" x 9'0"
Area: 84 sq. ft
Counted as Living Area:
Yes

Heated: Yes
Finished: Yes
Enclosed: Yes
Contiguous:
Yes
Permitted: Yes
Wet Space: No
Addition: No
Conversion: No

622 Palmer Avenue, Kimball Acres, Salem, Salem, Virginia, United States, 24153

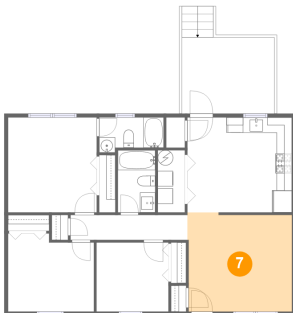
6 Floor 1 - Hall



Dimensions: 15'3" x 3'3"
Area: 49 sq. ft
Counted as Living Area:
Yes

Heated: Yes
Finished: Yes
Enclosed: Yes
Contiguous:
Yes
Permitted: Yes
Wet Space: No
Addition: No
Conversion: No

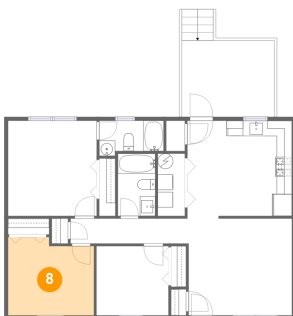
7 Floor 1 - Living Room



Dimensions: 13'7" x 12'11"
Area: 171 sq. ft
Counted as Living Area:
Yes

Heated: Yes
Finished: Yes
Enclosed: Yes
Contiguous:
Yes
Permitted: Yes
Wet Space: No
Addition: No
Conversion: No

8 Floor 1 - Bedroom



Dimensions: 11'2" x 10'2"
Area: 107 sq. ft
Counted as Living Area:
Yes

Heated: Yes
Finished: Yes
Enclosed: Yes
Contiguous:
Yes
Permitted: Yes
Wet Space: No
Addition: No
Conversion: No

622 Palmer Avenue, Kimball Acres, Salem, Salem, Virginia, United States, 24153

9 Floor 1 - Porch



Dimensions: 5'6" x 4'0"
Area: 22 sq. ft
Counted as Living Area: No

Heated: No
Finished: Yes
Enclosed: No
Contiguous: Yes
Permitted: Yes
Wet Space: No
Addition: No
Conversion: No

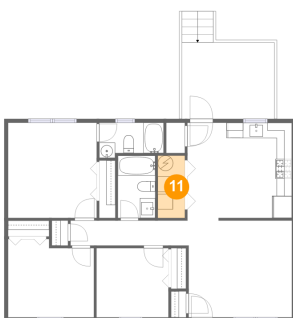
10 Floor 1 - Bath



Dimensions: 4'10" x 8'1"
Area: 39 sq. ft
Counted as Living Area:
Yes

Heated: Yes
Finished: Yes
Enclosed: Yes
Contiguous:
Yes
Permitted: Yes
Wet Space: Yes
Addition: No
Conversion: No

11 Floor 1 - Laundry



Dimensions: 3'6" x 8'1"
Area: 29 sq. ft
Counted as Living Area:
Yes

Heated: Yes
Finished: Yes
Enclosed: Yes
Contiguous:
Yes
Permitted: Yes
Wet Space: No
Addition: No
Conversion: No