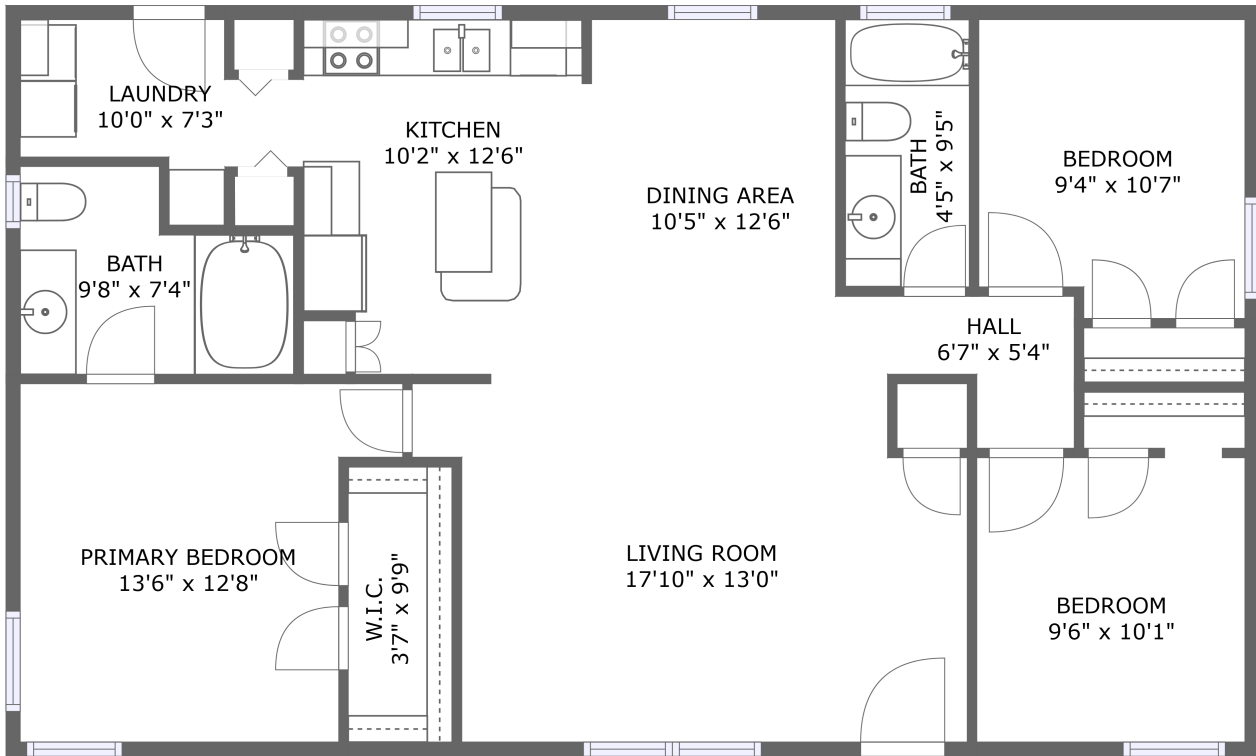



3300 Main St, Forest Grove, Washington County, Oregon, United States, 97116, 62



FLOOR 1

Property summary

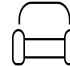
 **0** Garages

 **3** Bedrooms

 **2** Bathrooms

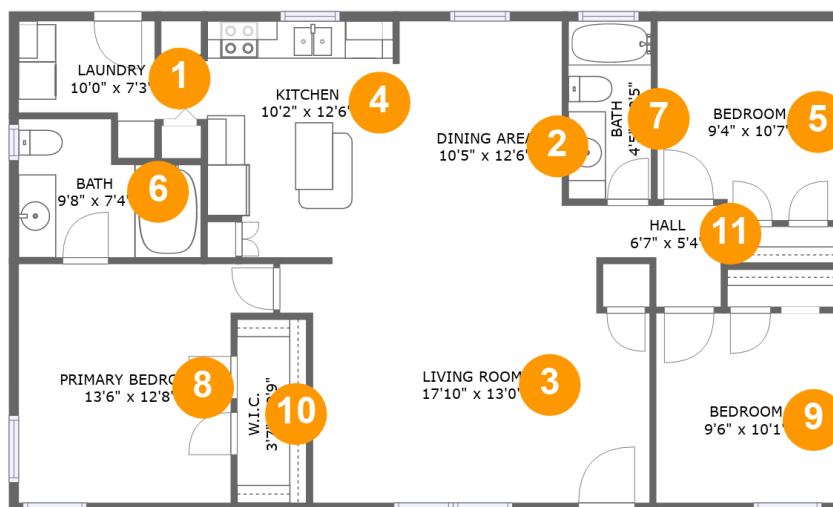
 **0** Half baths

 **1** Floors

 **1,174** Gross living area sqft

 **1,174** Total sqft

3300 Main St, Forest Grove, Washington County, Oregon, United States, 97116, 62



Room dimensions

Floor 1

Total sqft: 1174 Living area: 1174

#		Dimensions	sqft	Counted as living area
1	Utility	10'0" x 7'3"	48 sq. ft	Yes
2	Dining Room	10'5" x 12'6"	113 sq. ft	Yes
3	Living Room	17'10" x 13'0"	230 sq. ft	Yes
4	Kitchen	10'2" x 12'6"	123 sq. ft	Yes
5	Bedroom	9'4" x 10'7"	95 sq. ft	Yes
6	Bath	9'8" x 7'4"	59 sq. ft	Yes
7	Bath	4'5" x 9'5"	41 sq. ft	Yes
8	Bedroom	13'6" x 12'8"	148 sq. ft	Yes
9	Bedroom	9'6" x 10'1"	95 sq. ft	Yes
10	Cl	3'7" x 9'9"	36 sq. ft	Yes
11	Hall	6'7" x 5'4"	27 sq. ft	Yes

Scan captured on Tue, 07 Jan 2025 20:31:37 GMT

Information is calculated by Cubicasa technology deemed highly reliable but not guaranteed.

**3300 Main St, Forest Grove, Washington County,
Oregon, United States, 97116, 62**

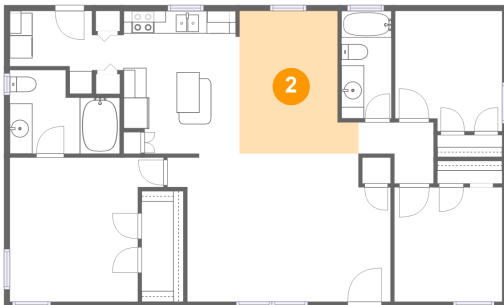
1 Floor 1 - Utility



Dimensions: 10'0" x 7'3"
Area: 48 sq. ft
Counted as living area: Yes

Heated: Yes
Finished: Yes
Enclosed: Yes
Contiguous: Yes
Permitted: Yes
Wet space: No
Addition: No
Conversion: No

2 Floor 1 - Dining Room



Dimensions: 10'5" x 12'6"
Area: 113 sq. ft
Counted as living area: Yes

Heated: Yes
Finished: Yes
Enclosed: Yes
Contiguous: Yes
Permitted: Yes
Wet space: No
Addition: No
Conversion: No

**3300 Main St, Forest Grove, Washington County,
Oregon, United States, 97116, 62**

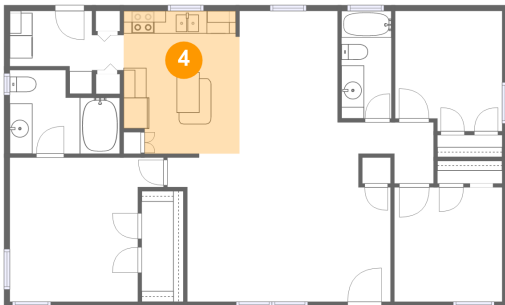
3 Floor 1 - Living Room



Dimensions: 17'10" x 13'0"
Area: 230 sq. ft
Counted as living area: Yes

Heated: Yes
Finished: Yes
Enclosed: Yes
Contiguous: Yes
Permitted: Yes
Wet space: No
Addition: No
Conversion: No

4 Floor 1 - Kitchen



Dimensions: 10'2" x 12'6"
Area: 123 sq. ft
Counted as living area: Yes

Heated: Yes
Finished: Yes
Enclosed: Yes
Contiguous: Yes
Permitted: Yes
Wet space: No
Addition: No
Conversion: No

5 Floor 1 - Bedroom



Dimensions: 9'4" x 10'7"
Area: 95 sq. ft
Counted as living area: Yes

Heated: Yes
Finished: Yes
Enclosed: Yes
Contiguous: Yes
Permitted: Yes
Wet space: No
Addition: No
Conversion: No

**3300 Main St, Forest Grove, Washington County,
Oregon, United States, 97116, 62**

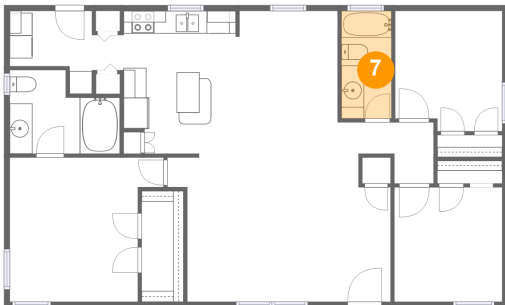
6 Floor 1 - Bath



Dimensions: 9'8" x 7'4"
Area: 59 sq. ft
Counted as living area: Yes

Heated: Yes
Finished: Yes
Enclosed: Yes
Contiguous: Yes
Permitted: Yes
Wet space: Yes
Addition: No
Conversion: No

7 Floor 1 - Bath



Dimensions: 4'5" x 9'5"
Area: 41 sq. ft
Counted as living area: Yes

Heated: Yes
Finished: Yes
Enclosed: Yes
Contiguous: Yes
Permitted: Yes
Wet space: Yes
Addition: No
Conversion: No

8 Floor 1 - Bedroom



Dimensions: 13'6" x 12'8"
Area: 148 sq. ft
Counted as living area: Yes

Heated: Yes
Finished: Yes
Enclosed: Yes
Contiguous: Yes
Permitted: Yes
Wet space: No
Addition: No
Conversion: No

**3300 Main St, Forest Grove, Washington County,
Oregon, United States, 97116, 62**

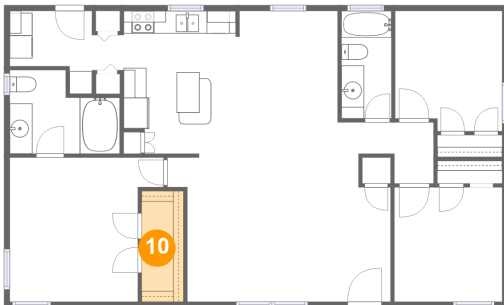
9 Floor 1 - Bedroom



Dimensions: 9'6" x 10'1"
Area: 95 sq. ft
Counted as living area: Yes

Heated: Yes
Finished: Yes
Enclosed: Yes
Contiguous: Yes
Permitted: Yes
Wet space: No
Addition: No
Conversion: No

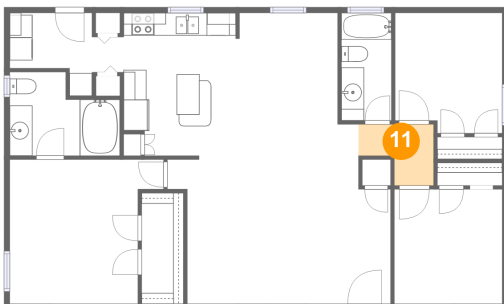
10 Floor 1 - Cl



Dimensions: 3'7" x 9'9"
Area: 36 sq. ft
Counted as living area: Yes

Heated: Yes
Finished: Yes
Enclosed: Yes
Contiguous: Yes
Permitted: Yes
Wet space: No
Addition: No
Conversion: No

11 Floor 1 - Hall



Dimensions: 6'7" x 5'4"
Area: 27 sq. ft
Counted as living area: Yes

Heated: Yes
Finished: Yes
Enclosed: Yes
Contiguous: Yes
Permitted: Yes
Wet space: No
Addition: No
Conversion: No