

Home report

2 Tom Gavinski Street, Arnprior, Renfrew County, Ontario,  
Canada, K7S 0G2




Total Area: 2173 sq. ft

Below Ground: 0 sq. ft, Floor 2: 1687 sq. ft, Floor 3: 486 sq. ft

Excluded: Basement 1626 sq. ft, Fireplace 9 sq. ft, Open to below 564 sq. ft, Walls: 265 sq. ft

Property summary

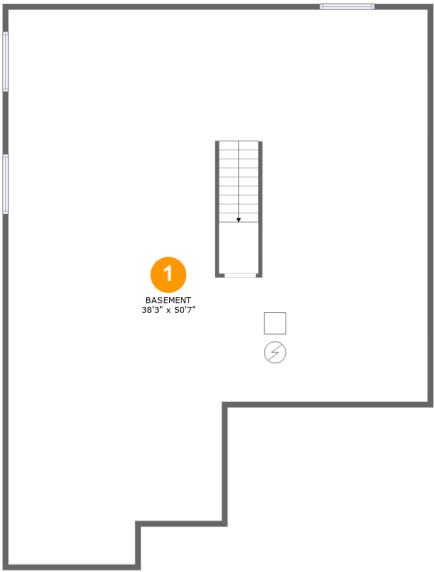
 3 Floors

 3 Bedrooms

 3 Bathrooms

Home report

2 Tom Gavinski Street, Arnprior, Renfrew County, Ontario,  
Canada, K7S 0G2



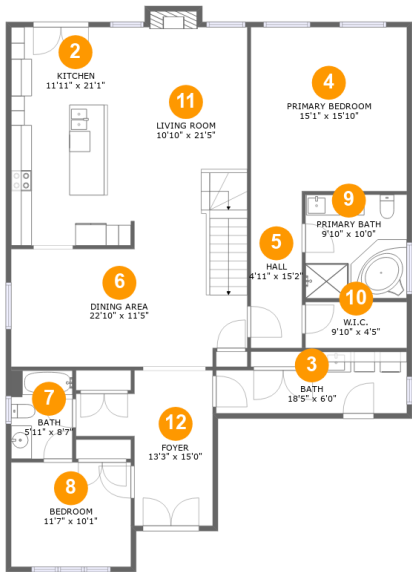
Room dimensions

Floor 1 Below ground Total:0sqft Excluded: 1626sqft

#		Max Dimensions	sqft	Included
1	Basement	38'3" x 50'7"	1626 sq. ft	No

Home report

2 Tom Gavinski Street, Arnprior, Renfrew County, Ontario,  
Canada, K7S 0G2



Room dimensions

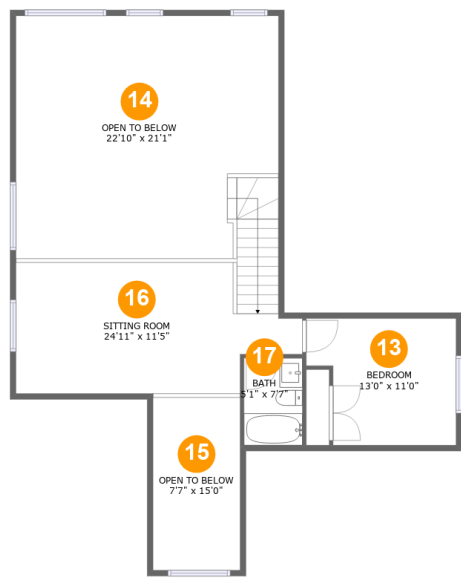
Floor 2

Total:1687sqft   Excluded: 9sqft

#		Max Dimensions	sqft	Included
2	Kitchen	11'11" x 21'1"	251 sq. ft	Yes
3	Bath	18'5" x 6'0"	92 sq. ft	Yes
4	Primary Bedroom	15'1" x 15'10"	239 sq. ft	Yes
5	Hall	4'11" x 15'2"	75 sq. ft	Yes
6	Dining Area	22'10" x 11'5"	254 sq. ft	Yes
7	Bath	5'11" x 8'7"	51 sq. ft	Yes
8	Bedroom	11'7" x 10'1"	117 sq. ft	Yes
9	Primary Bath	9'10" x 10'0"	98 sq. ft	Yes
10	W.I.C.	9'10" x 4'5"	44 sq. ft	Yes
11	Living Room	10'10" x 21'5"	241 sq. ft	Yes
12	Foyer	13'3" x 15'0"	137 sq. ft	Yes

Home report

2 Tom Gavinski Street, Arnprior, Renfrew County, Ontario,  
Canada, K7S 0G2



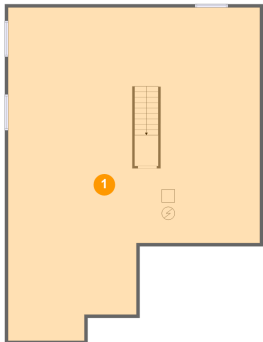
Room dimensions

Floor 3 Total:486sqft Excluded: 564sqft

#		Max Dimensions	sqft	Included
13	Bedroom	13'0" x 11'0"	127 sq. ft	Yes
14	Open To Below	22'10" x 21'1"	450 sq. ft	No
15	Open To Below	7'7" x 15'0"	114 sq. ft	No
16	Sitting Room	24'11" x 11'5"	296 sq. ft	Yes
17	Bath	5'1" x 7'7"	38 sq. ft	Yes

2 Tom Gavinski Street, Arnprior, Renfrew County, Ontario,  
Canada, K7S 0G2

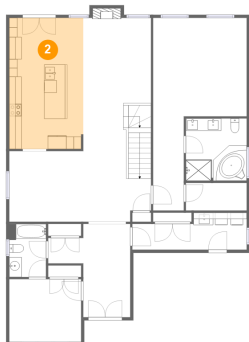
1 Floor 1 - Basement



Max Dimensions: 38'3" x 50'7"  
Calculated Area: 1626 sq. ft  
Included: No

Heated: Yes  
Finished: No  
Enclosed: Yes  
Contiguous: Yes  
Permitted: Yes  
Wet space: No  
Addition: No  
Conversion: No

2 Floor 2 - Kitchen



Max Dimensions: 11'11" x 21'1"  
Calculated Area: 251 sq. ft  
Included: Yes

Heated: Yes  
Finished: Yes  
Enclosed: Yes  
Contiguous: Yes  
Permitted: Yes  
Wet space: No  
Addition: No  
Conversion: No

2 Tom Gavinski Street, Arnprior, Renfrew County, Ontario,  
Canada, K7S 0G2

3 Floor 2 - Bath



Max Dimensions: 18'5" x 6'0"  
Calculated Area: 92 sq. ft  
Included: Yes

Heated: Yes  
Finished: Yes  
Enclosed: Yes  
Contiguous: Yes  
Permitted: Yes  
Wet space: Yes  
Addition: No  
Conversion: No

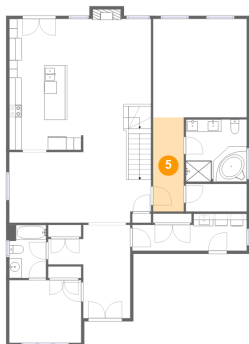
4 Floor 2 - Primary Bedroom



Max Dimensions: 15'1" x 15'10"  
Calculated Area: 239 sq. ft  
Included: Yes

Heated: Yes  
Finished: Yes  
Enclosed: Yes  
Contiguous: Yes  
Permitted: Yes  
Wet space: No  
Addition: No  
Conversion: No

5 Floor 2 - Hall



Max Dimensions: 4'11" x 15'2"  
Calculated Area: 75 sq. ft  
Included: Yes

Heated: Yes  
Finished: Yes  
Enclosed: Yes  
Contiguous: Yes  
Permitted: Yes  
Wet space: No  
Addition: No  
Conversion: No

2 Tom Gavinski Street, Arnprior, Renfrew County, Ontario,  
Canada, K7S 0G2

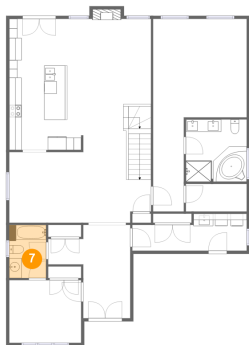
6 Floor 2 - Dining Area



Max Dimensions: 22'10" x 11'5"  
Calculated Area: 254 sq. ft  
Included: Yes

Heated: Yes  
Finished: Yes  
Enclosed: Yes  
Contiguous: Yes  
Permitted: Yes  
Wet space: No  
Addition: No  
Conversion: No

7 Floor 2 - Bath



Max Dimensions: 5'11" x 8'7"  
Calculated Area: 51 sq. ft  
Included: Yes

Heated: Yes  
Finished: Yes  
Enclosed: Yes  
Contiguous: Yes  
Permitted: Yes  
Wet space: Yes  
Addition: No  
Conversion: No

8 Floor 2 - Bedroom



Max Dimensions: 11'7" x 10'1"  
Calculated Area: 117 sq. ft  
Included: Yes

Heated: Yes  
Finished: Yes  
Enclosed: Yes  
Contiguous: Yes  
Permitted: Yes  
Wet space: No  
Addition: No  
Conversion: No

2 Tom Gavinski Street, Arnprior, Renfrew County, Ontario,  
Canada, K7S 0G2

9 Floor 2 - Primary Bath



Max Dimensions: 9'10" x 10'0"  
Calculated Area: 98 sq. ft  
Included: Yes

Heated: Yes  
Finished: Yes  
Enclosed: Yes  
Contiguous: Yes  
Permitted: Yes  
Wet space: Yes  
Addition: No  
Conversion: No

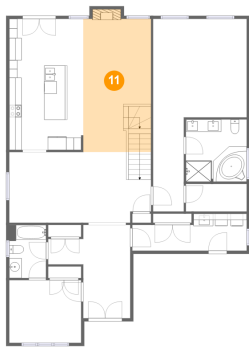
10 Floor 2 - W.I.C.



Max Dimensions: 9'10" x 4'5"  
Calculated Area: 44 sq. ft  
Included: Yes

Heated: Yes  
Finished: Yes  
Enclosed: Yes  
Contiguous: Yes  
Permitted: Yes  
Wet space: No  
Addition: No  
Conversion: No

11 Floor 2 - Living Room



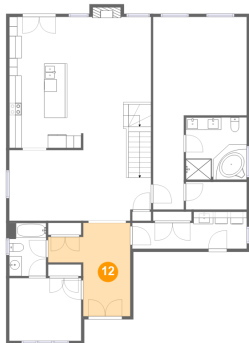
Max Dimensions: 10'10" x 21'5"  
Calculated Area: 241 sq. ft  
Included: Yes

Heated: Yes  
Finished: Yes  
Enclosed: Yes  
Contiguous: Yes  
Permitted: Yes  
Wet space: No  
Addition: No  
Conversion: No



2 Tom Gavinski Street, Arnprior, Renfrew County, Ontario,  
Canada, K7S 0G2

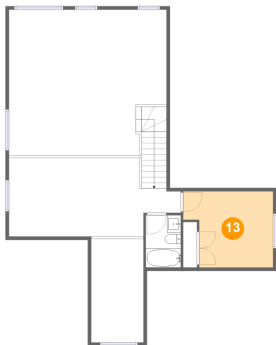
12 Floor 2 - Foyer



Max Dimensions: 13'3" x 15'0"  
Calculated Area: 137 sq. ft  
Included: Yes

Heated: Yes  
Finished: Yes  
Enclosed: Yes  
Contiguous: Yes  
Permitted: Yes  
Wet space: No  
Addition: No  
Conversion: No

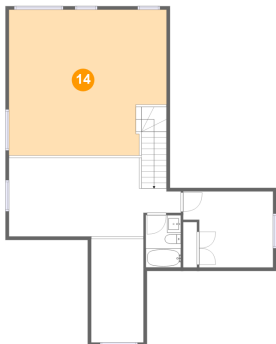
13 Floor 3 - Bedroom



Max Dimensions: 13'0" x 11'0"  
Calculated Area: 127 sq. ft  
Included: Yes

Heated: Yes  
Finished: Yes  
Enclosed: Yes  
Contiguous: Yes  
Permitted: Yes  
Wet space: No  
Addition: No  
Conversion: No

14 Floor 3 - Open To Below

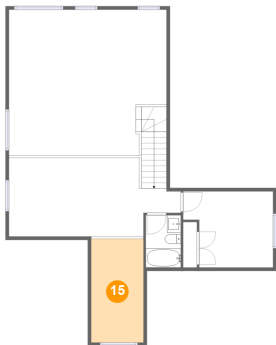


Max Dimensions: 22'10" x 21'1"  
Calculated Area: 450 sq. ft  
Included: No

Heated: No  
Finished: No  
Enclosed: No  
Contiguous: Yes  
Permitted: No  
Wet space: No  
Addition: No  
Conversion: No

2 Tom Gavinski Street, Arnprior, Renfrew County, Ontario,  
Canada, K7S 0G2

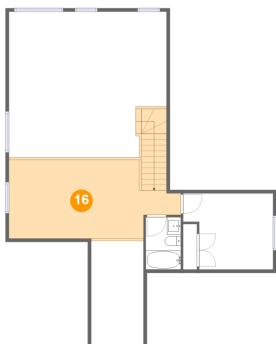
15 Floor 3 - Open To Below



Max Dimensions: 7'7" x 15'0"  
Calculated Area: 114 sq. ft  
Included: No

Heated: No  
Finished: No  
Enclosed: No  
Contiguous: Yes  
Permitted: No  
Wet space: No  
Addition: No  
Conversion: No

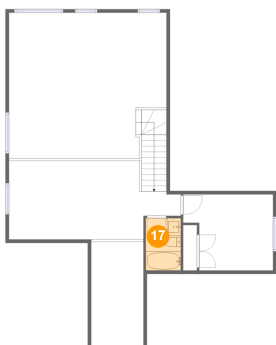
16 Floor 3 - Sitting Room



Max Dimensions: 24'11" x 11'5"  
Calculated Area: 296 sq. ft  
Included: Yes

Heated: Yes  
Finished: Yes  
Enclosed: Yes  
Contiguous: Yes  
Permitted: Yes  
Wet space: No  
Addition: No  
Conversion: No

17 Floor 3 - Bath



Max Dimensions: 5'1" x 7'7"  
Calculated Area: 38 sq. ft  
Included: Yes

Heated: Yes  
Finished: Yes  
Enclosed: Yes  
Contiguous: Yes  
Permitted: Yes  
Wet space: Yes  
Addition: No  
Conversion: No