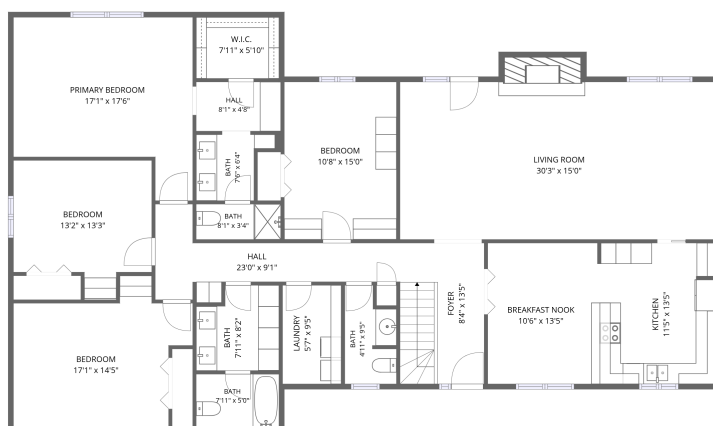
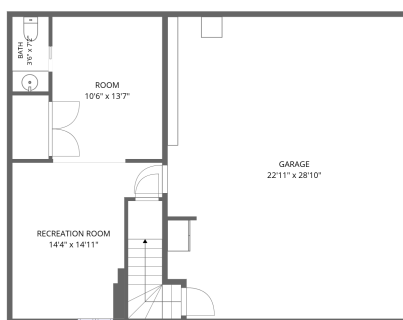


Home data report

1330 Evergreen Drive, Bartlesville, Washington County, Oklahoma, United States, 74006



1st floor



Basement

Total Area: 2614 sq. ft

Basement: 418 sq. ft, 1st Floor: 2196 sq. ft

Excluded: Garage 651 sq. ft, Fireplace 20 sq. ft, Walls: 186 sq. ft

Property summary



Home data report

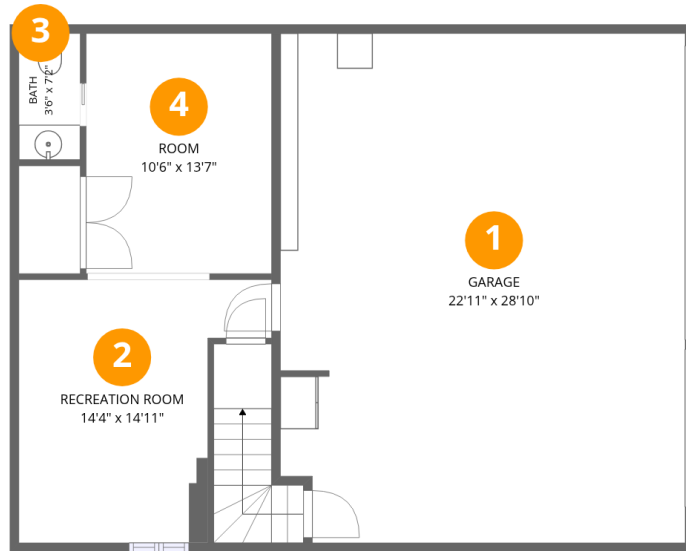
**1330 Evergreen Drive, Bartlesville, Washington County,
Oklahoma, United States, 74006**

 **2**
Half baths

 **1**
Garages

Home data report

1330 Evergreen Drive, Bartlesville, Washington County, Oklahoma, United States, 74006



Room dimensions

Floor 1 Below grade

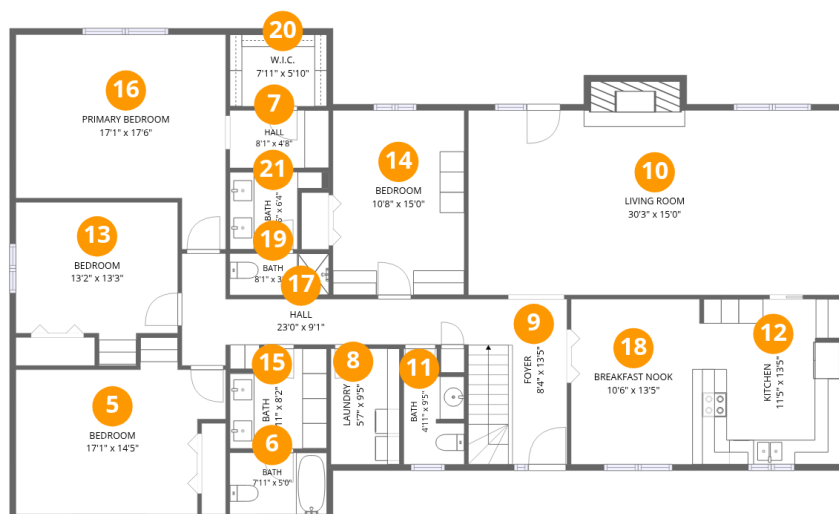
Total:418sqft

Excluded: 651sqft

#		Dimensions	sqft	Counted as living area
1	Garage	22'11" x 28'10"	651 sq. ft	No
2	Recreation Room	14'4" x 14'11"	171 sq. ft	Yes
3	Bath	3'6" x 7'2"	25 sq. ft	Yes
4	Room	10'6" x 13'7"	142 sq. ft	Yes

Home data report

1330 Evergreen Drive, Bartlesville, Washington County, Oklahoma, United States, 74006



Room dimensions

Floor 2

Total:2196sqft Excluded: 20sqft

#		Dimensions	sqft	Counted as living area
5	Bedroom	17'1" x 14'5"	191 sq. ft	Yes
6	Bath	7'11" x 5'0"	40 sq. ft	Yes
7	Hall	8'1" x 4'8"	38 sq. ft	Yes
8	Laundry	5'7" x 9'5"	53 sq. ft	Yes
9	Foyer	8'4" x 13'5"	109 sq. ft	Yes
10	Living Room	30'3" x 15'0"	472 sq. ft	Yes
11	Bath	4'11" x 9'5"	41 sq. ft	Yes
12	Kitchen	11'5" x 13'5"	153 sq. ft	Yes
13	Bedroom	13'2" x 13'3"	148 sq. ft	Yes
14	Bedroom	10'8" x 15'0"	161 sq. ft	Yes
15	Bath	7'11" x 8'2"	59 sq. ft	Yes

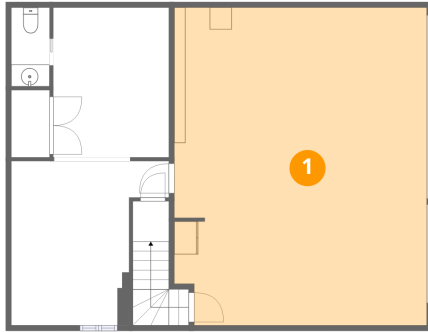
Home data report

**1330 Evergreen Drive, Bartlesville, Washington County,
Oklahoma, United States, 74006**

#		Dimensions	sqft	Counted as living area
16	Primary Bedroom	17'1" x 17'6"	242 sq. ft	Yes
17	Hall	23'0" x 9'1"	109 sq. ft	Yes
18	Breakfast Nook	10'6" x 13'5"	140 sq. ft	Yes
19	Bath	8'1" x 3'4"	27 sq. ft	Yes
20	W.I.C.	7'11" x 5'10"	46 sq. ft	Yes
21	Bath	7'6" x 6'4"	38 sq. ft	Yes

1330 Evergreen Drive, Bartlesville, Washington County,
Oklahoma, United States, 74006

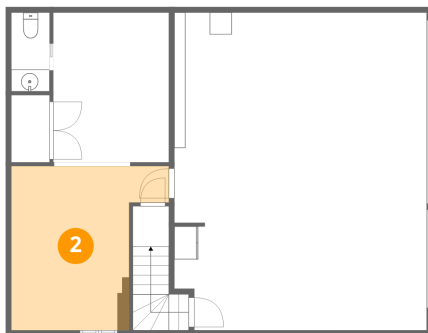
1 Floor 1 - Garage



Dimensions: 22'11" x 28'10"
Area: 651 sq. ft
Counted as living area: No

Heated: No
Finished: No
Enclosed: Yes
Contiguous: Yes
Permitted: Yes
Wet space: No
Addition: No
Conversion: No

2 Floor 1 - Recreation Room

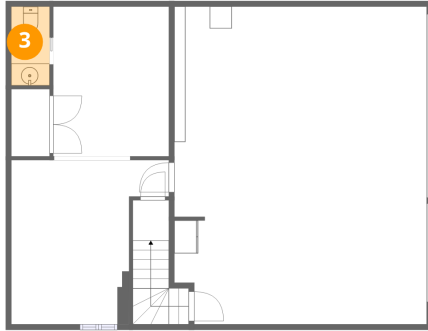


Dimensions: 14'4" x 14'11"
Area: 171 sq. ft
Counted as living area: Yes

Heated: Yes
Finished: Yes
Enclosed: Yes
Contiguous: Yes
Permitted: Yes
Wet space: No
Addition: No
Conversion: No

1330 Evergreen Drive, Bartlesville, Washington County,
Oklahoma, United States, 74006

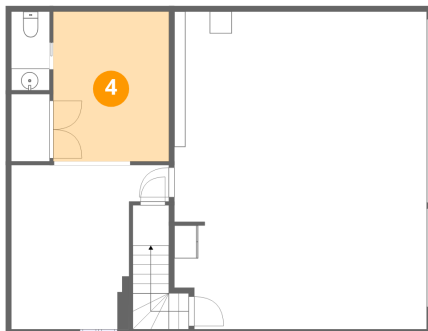
3 Floor 1 - Bath



Dimensions: 3'6" x 7'2"
Area: 25 sq. ft
Counted as living area: Yes

Heated: Yes
Finished: Yes
Enclosed: Yes
Contiguous: Yes
Permitted: Yes
Wet space: Yes
Addition: No
Conversion: No

4 Floor 1 - Room



Dimensions: 10'6" x 13'7"
Area: 142 sq. ft
Counted as living area: Yes

Heated: Yes
Finished: Yes
Enclosed: Yes
Contiguous: Yes
Permitted: Yes
Wet space: No
Addition: No
Conversion: No

5 Floor 2 - Bedroom

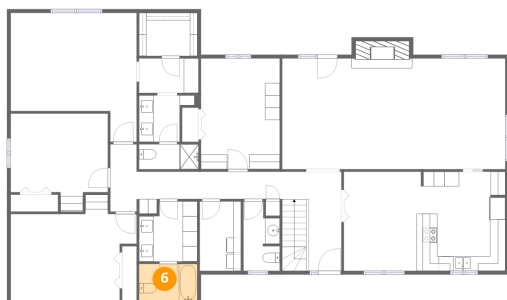


Dimensions: 17'1" x 14'5"
Area: 191 sq. ft
Counted as living area: Yes

Heated: Yes
Finished: Yes
Enclosed: Yes
Contiguous: Yes
Permitted: Yes
Wet space: No
Addition: No
Conversion: No

1330 Evergreen Drive, Bartlesville, Washington County,
Oklahoma, United States, 74006

6 Floor 2 - Bath



Dimensions: 7'11" x 5'0"
Area: 40 sq. ft
Counted as living area: Yes

Heated: Yes
Finished: Yes
Enclosed: Yes
Contiguous: Yes
Permitted: Yes
Wet space: Yes
Addition: No
Conversion: No

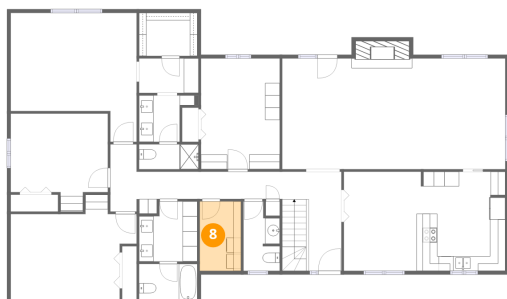
7 Floor 2 - Hall



Dimensions: 8'1" x 4'8"
Area: 38 sq. ft
Counted as living area: Yes

Heated: Yes
Finished: Yes
Enclosed: Yes
Contiguous: Yes
Permitted: Yes
Wet space: No
Addition: No
Conversion: No

8 Floor 2 - Laundry



Dimensions: 5'7" x 9'5"
Area: 53 sq. ft
Counted as living area: Yes

Heated: Yes
Finished: Yes
Enclosed: Yes
Contiguous: Yes
Permitted: Yes
Wet space: No
Addition: No
Conversion: No

1330 Evergreen Drive, Bartlesville, Washington County, Oklahoma, United States, 74006

9 Floor 2 - Foyer



Dimensions: 8'4" x 13'5"
Area: 109 sq. ft
Counted as living area: Yes

Heated: Yes
Finished: Yes
Enclosed: Yes
Contiguous: Yes
Permitted: Yes
Wet space: No
Addition: No
Conversion: No

10 Floor 2 - Living Room



Dimensions: 30'3" x 15'0"
Area: 472 sq. ft
Counted as living area: Yes

Heated: Yes
Finished: Yes
Enclosed: Yes
Contiguous: Yes
Permitted: Yes
Wet space: No
Addition: No
Conversion: No

11 Floor 2 - Bath



Dimensions: 4'11" x 9'5"
Area: 41 sq. ft
Counted as living area: Yes

Heated: Yes
Finished: Yes
Enclosed: Yes
Contiguous: Yes
Permitted: Yes
Wet space: Yes
Addition: No
Conversion: No

1330 Evergreen Drive, Bartlesville, Washington County, Oklahoma, United States, 74006

12 Floor 2 - Kitchen



Dimensions: 11'5" x 13'5"
Area: 153 sq. ft
Counted as living area: Yes

Heated: Yes
Finished: Yes
Enclosed: Yes
Contiguous: Yes
Permitted: Yes
Wet space: No
Addition: No
Conversion: No

13 Floor 2 - Bedroom



Dimensions: 13'2" x 13'3"
Area: 148 sq. ft
Counted as living area: Yes

Heated: Yes
Finished: Yes
Enclosed: Yes
Contiguous: Yes
Permitted: Yes
Wet space: No
Addition: No
Conversion: No

14 Floor 2 - Bedroom



Dimensions: 10'8" x 15'0"
Area: 161 sq. ft
Counted as living area: Yes

Heated: Yes
Finished: Yes
Enclosed: Yes
Contiguous: Yes
Permitted: Yes
Wet space: No
Addition: No
Conversion: No

1330 Evergreen Drive, Bartlesville, Washington County, Oklahoma, United States, 74006

15 Floor 2 - Bath



Dimensions: 7'11" x 8'2"
Area: 59 sq. ft
Counted as living area: Yes

Heated: Yes
Finished: Yes
Enclosed: Yes
Contiguous: Yes
Permitted: Yes
Wet space: Yes
Addition: No
Conversion: No

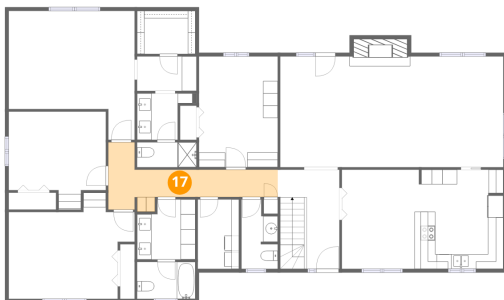
16 Floor 2 - Primary Bedroom



Dimensions: 17'1" x 17'6"
Area: 242 sq. ft
Counted as living area: Yes

Heated: Yes
Finished: Yes
Enclosed: Yes
Contiguous: Yes
Permitted: Yes
Wet space: No
Addition: No
Conversion: No

17 Floor 2 - Hall



Dimensions: 23'0" x 9'1"
Area: 109 sq. ft
Counted as living area: Yes

Heated: Yes
Finished: Yes
Enclosed: Yes
Contiguous: Yes
Permitted: Yes
Wet space: No
Addition: No
Conversion: No

1330 Evergreen Drive, Bartlesville, Washington County, Oklahoma, United States, 74006

18 Floor 2 - Breakfast Nook



Dimensions: 10'6" x 13'5"
Area: 140 sq. ft
Counted as living area: Yes

Heated: Yes
Finished: Yes
Enclosed: Yes
Contiguous: Yes
Permitted: Yes
Wet space: No
Addition: No
Conversion: No

19 Floor 2 - Bath



Dimensions: 8'1" x 3'4"
Area: 27 sq. ft
Counted as living area: Yes

Heated: Yes
Finished: Yes
Enclosed: Yes
Contiguous: Yes
Permitted: Yes
Wet space: Yes
Addition: No
Conversion: No

20 Floor 2 - W.I.C.



Dimensions: 7'11" x 5'10"
Area: 46 sq. ft
Counted as living area: Yes

Heated: Yes
Finished: Yes
Enclosed: Yes
Contiguous: Yes
Permitted: Yes
Wet space: No
Addition: No
Conversion: No

1330 Evergreen Drive, Bartlesville, Washington County,
Oklahoma, United States, 74006

21 Floor 2 - Bath



Dimensions: 7'6" x 6'4"
Area: 38 sq. ft
Counted as living area: Yes

Heated: Yes
Finished: Yes
Enclosed: Yes
Contiguous: Yes
Permitted: Yes
Wet space: Yes
Addition: No
Conversion: No