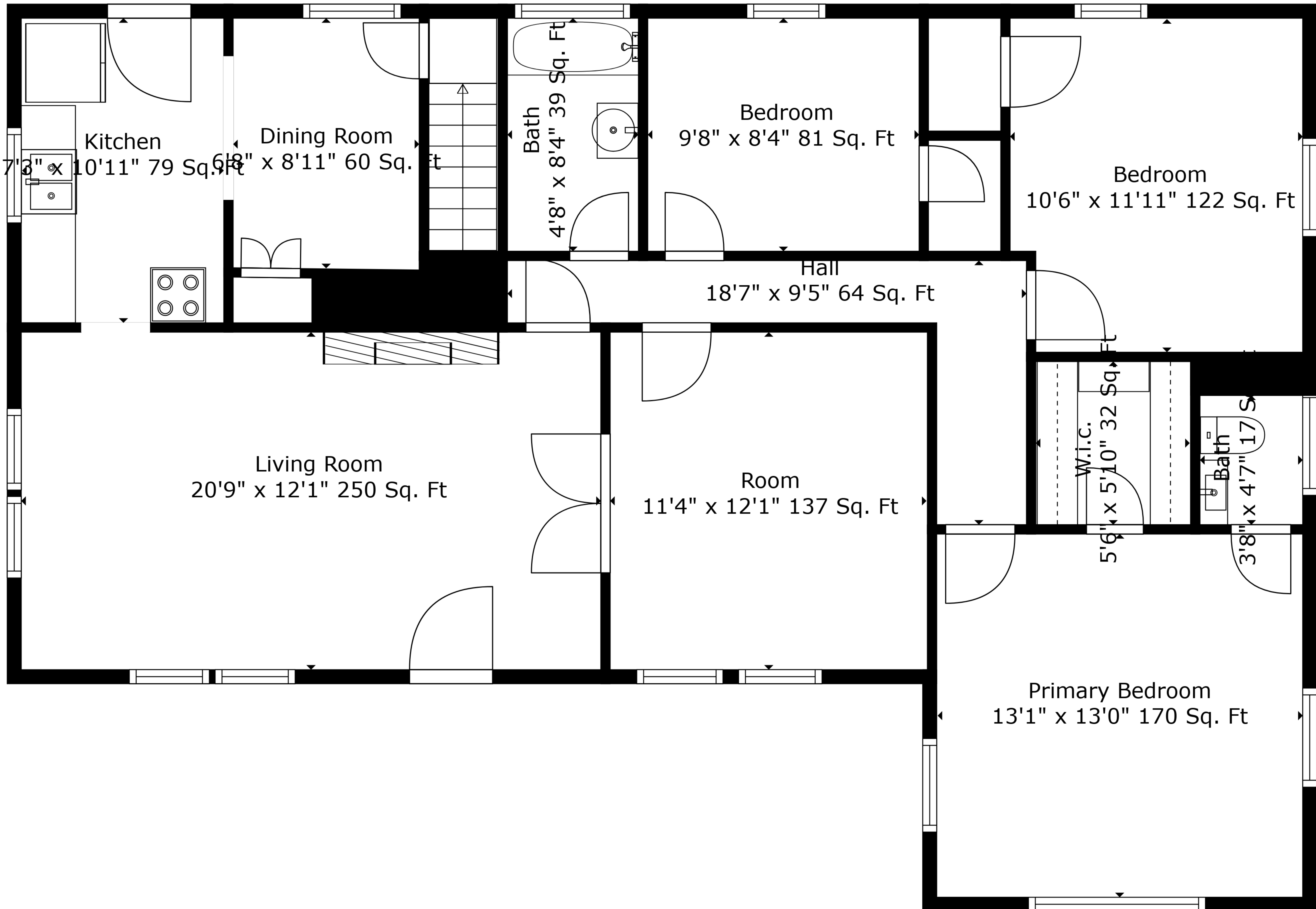


Basement
32'2" x 23'4" 721 Sq. Ft

TOTAL: 1975 sq. ft
BELOW GROUND: 808 sq. ft, FLOOR 2: 1167 sq. ft

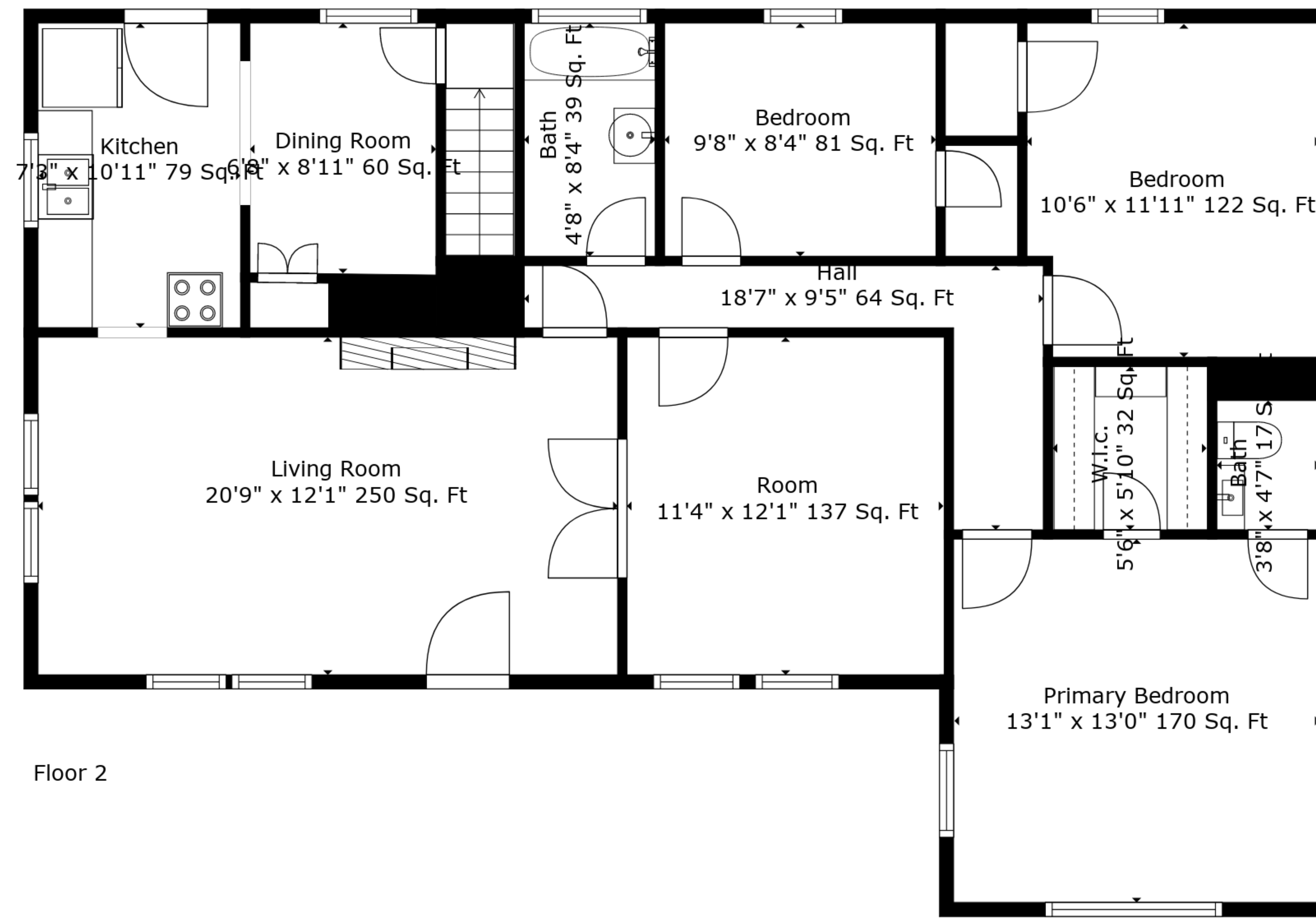
Measurements Are Deemed Highly Reliable But Not Guaranteed.



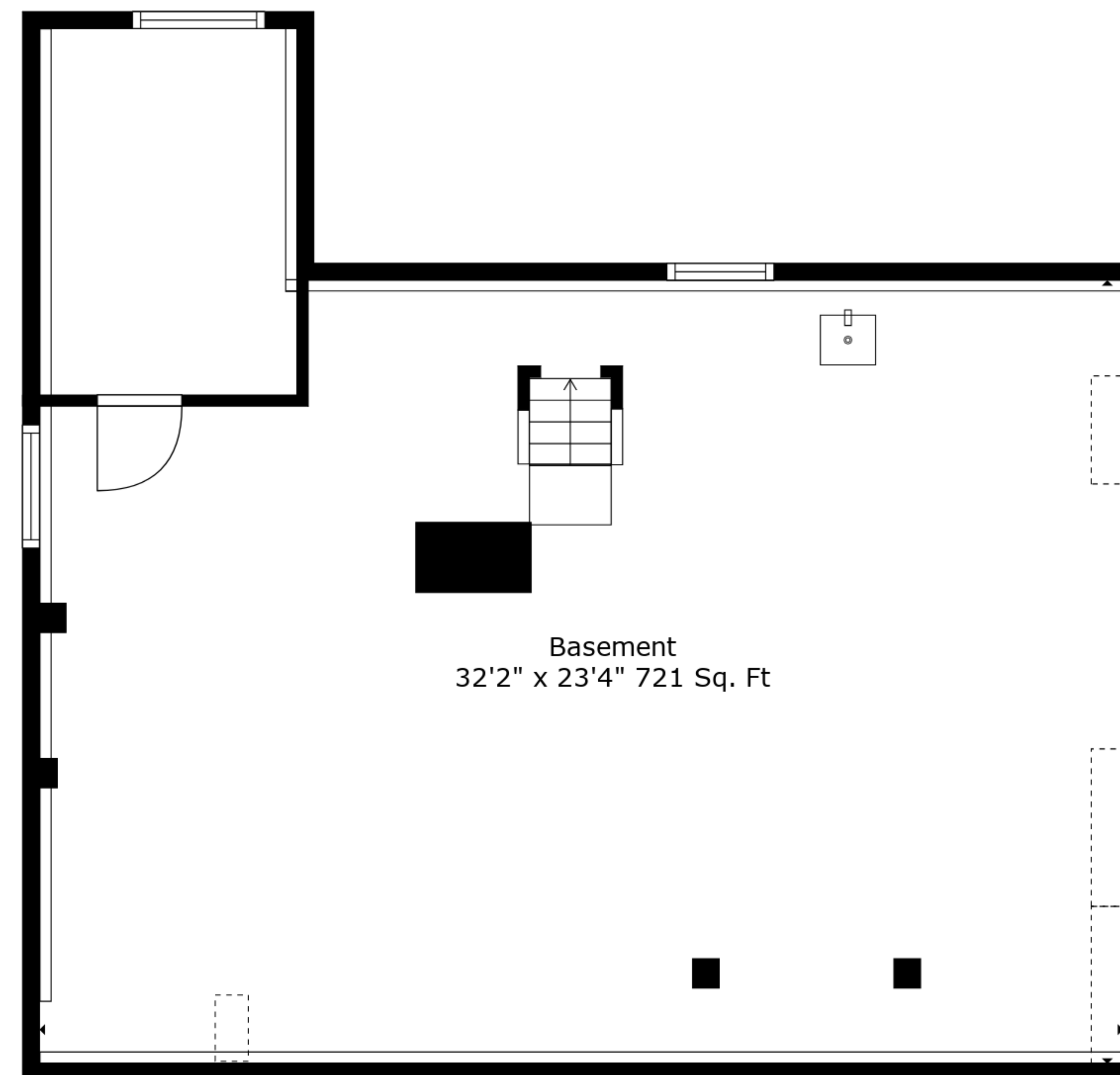
TOTAL: 1975 sq. ft

BELOW GROUND: 808 sq. ft, FLOOR 2: 1167 sq. ft

Measurements Are Deemed Highly Reliable But Not Guaranteed.



Floor 2



Floor 1

TOTAL: 1975 sq. ft
 BELOW GROUND: 808 sq. ft, FLOOR 2: 1167 sq. ft

Measurements Are Deemed Highly Reliable But Not Guaranteed.