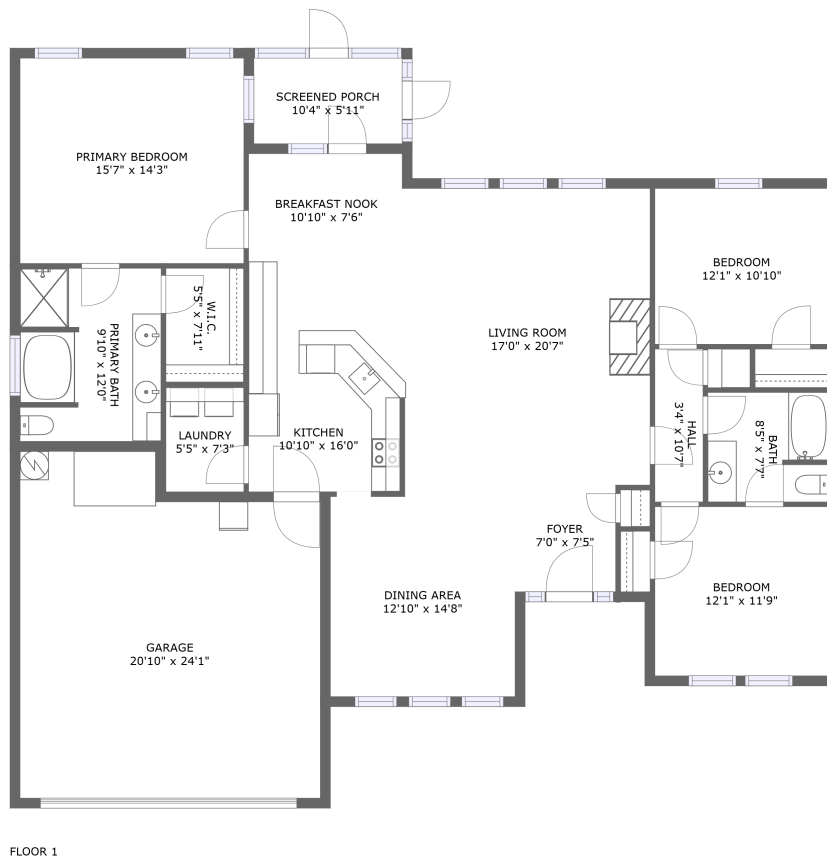




170 Bucks Pocket Drive, New Market, Madison County, Alabama, United States, 35761



Property summary

 **1** Garages


 **3** Bedrooms

 **2** Bathrooms

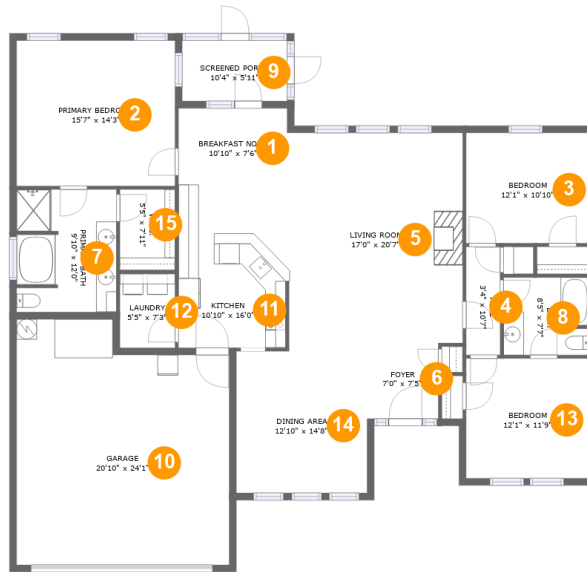
 **0** Half baths

 **1** Floors

 **1,869**
Gross living
area sqft

 **2,441**
Total sqft

170 Bucks Pocket Drive, New Market, Madison County, Alabama, United States, 35761



Room dimensions

Floor 1

Total sqft: 2441

Living area: 1869

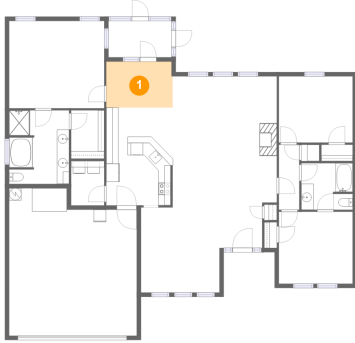
#		Dimensions	sqft	Counted as living area
1	Breakfast Nook	10'10" x 7'6"	81 sq. ft	Yes
2	Primary Bedroom	15'7" x 14'3"	222 sq. ft	Yes
3	Bedroom	12'1" x 10'10"	131 sq. ft	Yes
4	Hall	3'4" x 10'7"	35 sq. ft	Yes
5	Living Room	17'0" x 20'7"	351 sq. ft	Yes
6	Foyer	7'0" x 7'5"	52 sq. ft	Yes
7	Primary Bath	9'10" x 12'0"	115 sq. ft	Yes
8	Bath	8'5" x 7'7"	63 sq. ft	Yes
9	Screened Porch	10'4" x 5'11"	61 sq. ft	No
10	Garage	20'10" x 24'1"	462 sq. ft	No
11	Kitchen	10'10" x 16'0"	171 sq. ft	Yes

**170 Bucks Pocket Drive, New Market, Madison
County, Alabama, United States, 35761**

#		Dimensions	sqft	Counted as living area
12	Laundry	5'5" x 7'3"	39 sq. ft	Yes
13	Bedroom	12'1" x 11'9"	142 sq. ft	Yes
14	Dining Area	12'10" x 14'8"	184 sq. ft	Yes
15	W.I.C.	5'5" x 7'11"	43 sq. ft	Yes

170 Bucks Pocket Drive, New Market, Madison County, Alabama, United States, 35761

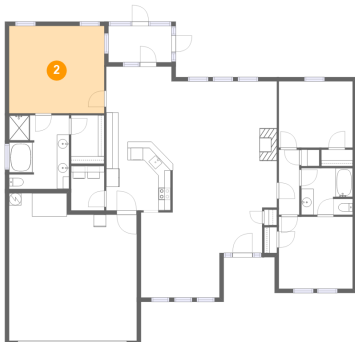
1 Floor 1 - Breakfast Nook



Dimensions: 10'10" x 7'6"
Area: 81 sq. ft
Counted as living area: Yes

Heated: Yes
Finished: Yes
Enclosed: Yes
Contiguous: Yes
Permitted: Yes
Wet space: No
Addition: No
Conversion: No

2 Floor 1 - Primary Bedroom

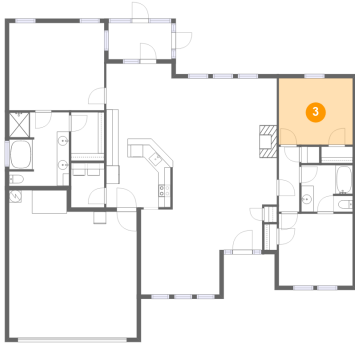


Dimensions: 15'7" x 14'3"
Area: 222 sq. ft
Counted as living area: Yes

Heated: Yes
Finished: Yes
Enclosed: Yes
Contiguous: Yes
Permitted: Yes
Wet space: No
Addition: No
Conversion: No

170 Bucks Pocket Drive, New Market, Madison County, Alabama, United States, 35761

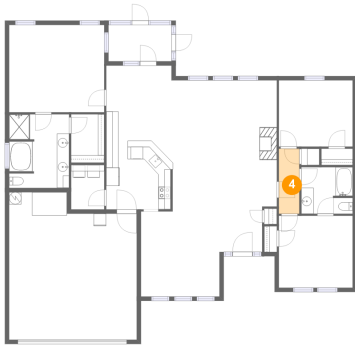
3 Floor 1 - Bedroom



Dimensions: 12'1" x 10'10"
Area: 131 sq. ft
Counted as living area: Yes

Heated: Yes
Finished: Yes
Enclosed: Yes
Contiguous: Yes
Permitted: Yes
Wet space: No
Addition: No
Conversion: No

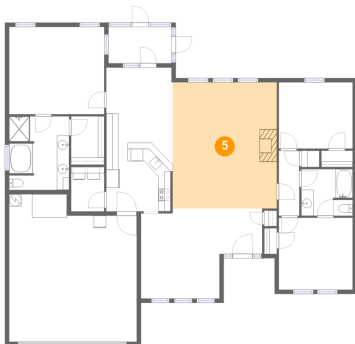
4 Floor 1 - Hall



Dimensions: 3'4" x 10'7"
Area: 35 sq. ft
Counted as living area: Yes

Heated: Yes
Finished: Yes
Enclosed: Yes
Contiguous: Yes
Permitted: Yes
Wet space: No
Addition: No
Conversion: No

5 Floor 1 - Living Room

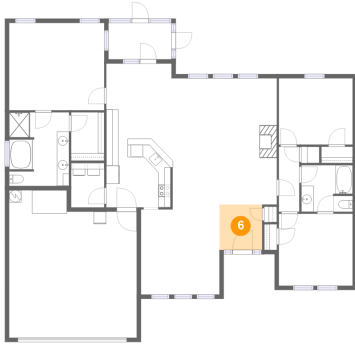


Dimensions: 17'0" x 20'7"
Area: 351 sq. ft
Counted as living area: Yes

Heated: Yes
Finished: Yes
Enclosed: Yes
Contiguous: Yes
Permitted: Yes
Wet space: No
Addition: No
Conversion: No

170 Bucks Pocket Drive, New Market, Madison County, Alabama, United States, 35761

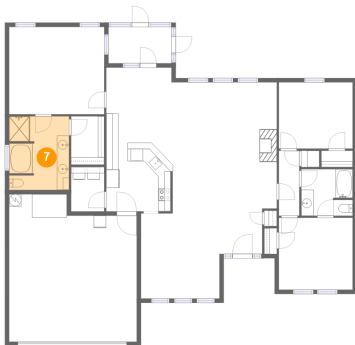
6 Floor 1 - Foyer



Dimensions: 7'0" x 7'5"
Area: 52 sq. ft
Counted as living area: Yes

Heated: Yes
Finished: Yes
Enclosed: Yes
Contiguous: Yes
Permitted: Yes
Wet space: No
Addition: No
Conversion: No

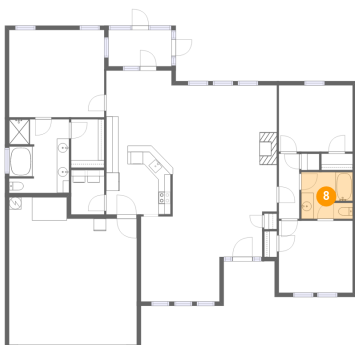
7 Floor 1 - Primary Bath



Dimensions: 9'10" x 12'0"
Area: 115 sq. ft
Counted as living area: Yes

Heated: Yes
Finished: Yes
Enclosed: Yes
Contiguous: Yes
Permitted: Yes
Wet space: Yes
Addition: No
Conversion: No

8 Floor 1 - Bath

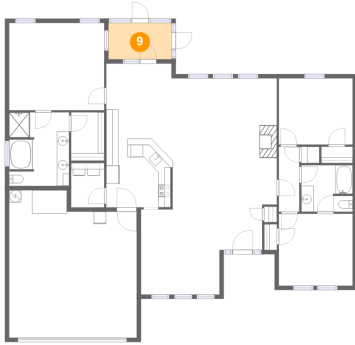


Dimensions: 8'5" x 7'7"
Area: 63 sq. ft
Counted as living area: Yes

Heated: Yes
Finished: Yes
Enclosed: Yes
Contiguous: Yes
Permitted: Yes
Wet space: Yes
Addition: No
Conversion: No

170 Bucks Pocket Drive, New Market, Madison County, Alabama, United States, 35761

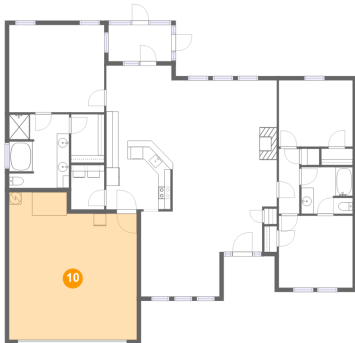
9 Floor 1 - Screened Porch



Dimensions: 10'4" x 5'11"
Area: 61 sq. ft
Counted as living area: No

Heated: No
Finished: Yes
Enclosed: No
Contiguous: Yes
Permitted: Yes
Wet space: No
Addition: No
Conversion: No

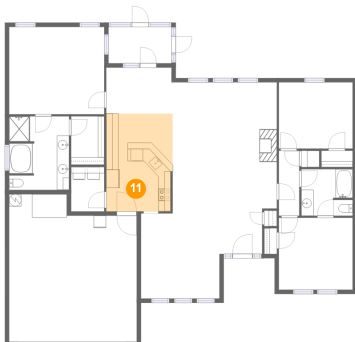
10 Floor 1 - Garage



Dimensions: 20'10" x 24'1"
Area: 462 sq. ft
Counted as living area: No

Heated: No
Finished: No
Enclosed: Yes
Contiguous: Yes
Permitted: Yes
Wet space: No
Addition: No
Conversion: No

11 Floor 1 - Kitchen

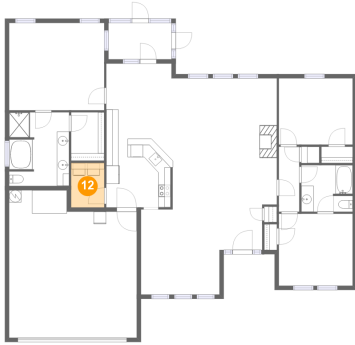


Dimensions: 10'10" x 16'0"
Area: 171 sq. ft
Counted as living area: Yes

Heated: Yes
Finished: Yes
Enclosed: Yes
Contiguous: Yes
Permitted: Yes
Wet space: No
Addition: No
Conversion: No

170 Bucks Pocket Drive, New Market, Madison County, Alabama, United States, 35761

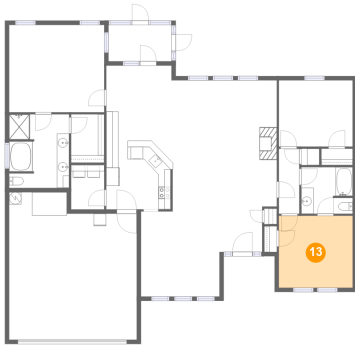
12 Floor 1 - Laundry



Dimensions: 5'5" x 7'3"
Area: 39 sq. ft
Counted as living area: Yes

Heated: Yes
Finished: Yes
Enclosed: Yes
Contiguous: Yes
Permitted: Yes
Wet space: No
Addition: No
Conversion: No

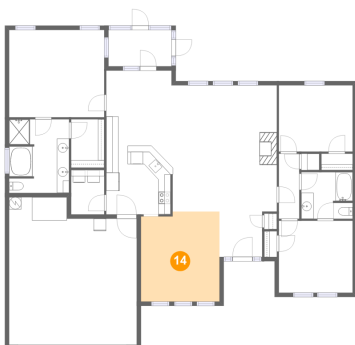
13 Floor 1 - Bedroom



Dimensions: 12'1" x 11'9"
Area: 142 sq. ft
Counted as living area: Yes

Heated: Yes
Finished: Yes
Enclosed: Yes
Contiguous: Yes
Permitted: Yes
Wet space: No
Addition: No
Conversion: No

14 Floor 1 - Dining Area

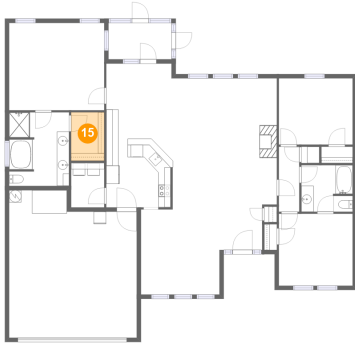


Dimensions: 12'10" x 14'8"
Area: 184 sq. ft
Counted as living area: Yes

Heated: Yes
Finished: Yes
Enclosed: Yes
Contiguous: Yes
Permitted: Yes
Wet space: No
Addition: No
Conversion: No

**170 Bucks Pocket Drive, New Market, Madison
County, Alabama, United States, 35761**

15 Floor 1 - W.I.C.



Dimensions: 5'5" x 7'11"
Area: 43 sq. ft
Counted as living area: Yes

Heated: Yes
Finished: Yes
Enclosed: Yes
Contiguous: Yes
Permitted: Yes
Wet space: No
Addition: No
Conversion: No