

Home data report

2330 Marine Drive, Bronte, Oakville, Halton County, Ontario, Canada, L6L 1C3



Total Area: 1659 sq. ft

Basement: 0 sq. ft, 1st Floor: 956 sq. ft, 2nd Floor: 703 sq. ft

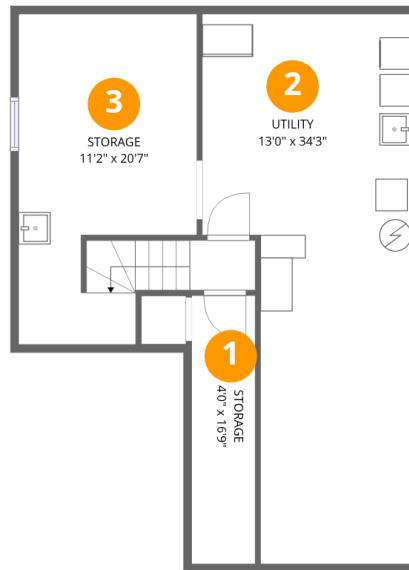
Excluded: Utility 414 sq. ft, Storage 328 sq. ft, Undefined 10 sq. ft, Embedded window 9 sq. ft

Property summary



Home data report

2330 Marine Drive, Bronte, Oakville, Halton County, Ontario, Canada, L6L 1C3



Room dimensions

Floor 1 Below grade

Total:0sqft

Excluded: 752sqft

#		Dimensions	sqft	Counted as living area
1	Storage	4'0" x 16'9"	66 sq. ft	No
2	Utility	13'0" x 34'3"	373 sq. ft	No
3	Storage	11'2" x 20'7"	224 sq. ft	No

Home data report

2330 Marine Drive, Bronte, Oakville, Halton County, Ontario, Canada, L6L 1C3



Room dimensions

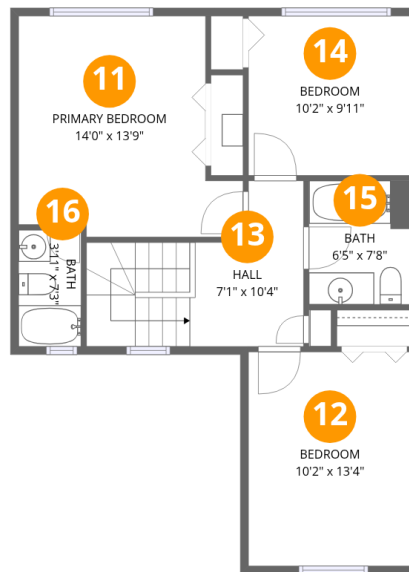
Floor 2

Total:956sqft Excluded: 9sqft

#		Dimensions	sqft	Counted as living area
4	Living Room	10'2" x 21'9"	221 sq. ft	Yes
5	Bath	3'11" x 4'8"	18 sq. ft	Yes
6	Family Room	10'8" x 15'7"	154 sq. ft	Yes
7	Eat-in Kitchen	13'6" x 12'2"	162 sq. ft	Yes
8	Hall	3'4" x 14'8"	94 sq. ft	Yes
9	Dining Area	17'1" x 10'6"	179 sq. ft	Yes
10	Foyer	4'11" x 5'6"	27 sq. ft	Yes

Home data report

2330 Marine Drive, Bronte, Oakville, Halton County, Ontario, Canada, L6L 1C3



Room dimensions

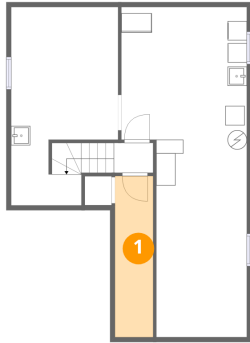
Floor 3

Total:703sqft

Excluded: 0sqft

#		Dimensions	sqft	Counted as living area
11	Primary Bedroom	14'0" x 13'9"	166 sq. ft	Yes
12	Bedroom	10'2" x 13'4"	136 sq. ft	Yes
13	Hall	7'1" x 10'4"	101 sq. ft	Yes
14	Bedroom	10'2" x 9'11"	101 sq. ft	Yes
15	Bath	6'5" x 7'8"	49 sq. ft	Yes
16	Bath	3'11" x 7'3"	28 sq. ft	Yes

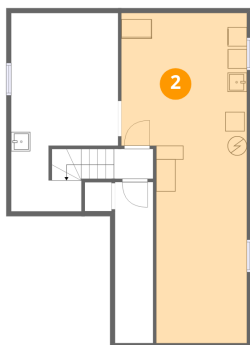
1 Floor 1 - Storage



Dimensions: 4'0" x 16'9"
Area: 66 sq. ft
Counted as living area: No

Heated: No
Finished: No
Enclosed: No
Contiguous: Yes
Permitted: Yes
Wet space: No
Addition: No
Conversion: No

2 Floor 1 - Utility

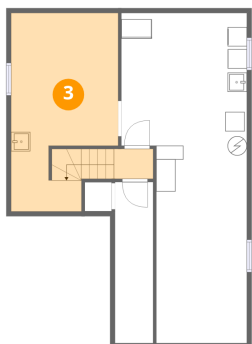


Dimensions: 13'0" x 34'3"
Area: 373 sq. ft
Counted as living area: No

Heated: Yes
Finished: No
Enclosed: Yes
Contiguous: Yes
Permitted: Yes
Wet space: No
Addition: No
Conversion: No

2330 Marine Drive, Bronte, Oakville, Halton County, Ontario, Canada, L6L 1C3

3 Floor 1 - Storage



Dimensions: 11'2" x 20'7"
Area: 224 sq. ft
Counted as living area: No

Heated: No
Finished: No
Enclosed: No
Contiguous: Yes
Permitted: Yes
Wet space: No
Addition: No
Conversion: No

4 Floor 2 - Living Room



Dimensions: 10'2" x 21'9"
Area: 221 sq. ft
Counted as living area: Yes

Heated: Yes
Finished: Yes
Enclosed: Yes
Contiguous: Yes
Permitted: Yes
Wet space: No
Addition: No
Conversion: No

5 Floor 2 - Bath



Dimensions: 3'11" x 4'8"
Area: 18 sq. ft
Counted as living area: Yes

Heated: Yes
Finished: Yes
Enclosed: Yes
Contiguous: Yes
Permitted: Yes
Wet space: Yes
Addition: No
Conversion: No

2330 Marine Drive, Bronte, Oakville, Halton County, Ontario,
Canada, L6L 1C3

6 Floor 2 - Family Room



Dimensions: 10'8" x 15'7"
Area: 154 sq. ft
Counted as living area: Yes

Heated: Yes
Finished: Yes
Enclosed: Yes
Contiguous: Yes
Permitted: Yes
Wet space: No
Addition: No
Conversion: No

7 Floor 2 - Eat-in Kitchen



Dimensions: 13'6" x 12'2"
Area: 162 sq. ft
Counted as living area: Yes

Heated: Yes
Finished: Yes
Enclosed: Yes
Contiguous: Yes
Permitted: Yes
Wet space: No
Addition: No
Conversion: No

8 Floor 2 - Hall



Dimensions: 3'4" x 14'8"
Area: 94 sq. ft
Counted as living area: Yes

Heated: Yes
Finished: Yes
Enclosed: Yes
Contiguous: Yes
Permitted: Yes
Wet space: No
Addition: No
Conversion: No

2330 Marine Drive, Bronte, Oakville, Halton County, Ontario,
Canada, L6L 1C3

9 Floor 2 - Dining Area



Dimensions: 17'1" x 10'6"
Area: 179 sq. ft
Counted as living area: Yes

Heated: Yes
Finished: Yes
Enclosed: Yes
Contiguous: Yes
Permitted: Yes
Wet space: No
Addition: No
Conversion: No

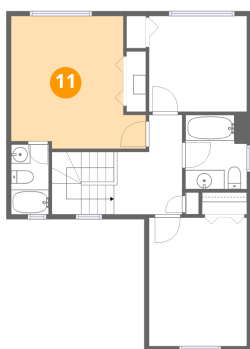
10 Floor 2 - Foyer



Dimensions: 4'11" x 5'6"
Area: 27 sq. ft
Counted as living area: Yes

Heated: Yes
Finished: Yes
Enclosed: Yes
Contiguous: Yes
Permitted: Yes
Wet space: No
Addition: No
Conversion: No

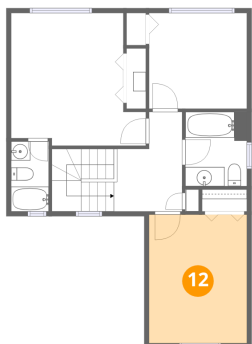
11 Floor 3 - Primary Bedroom



Dimensions: 14'0" x 13'9"
Area: 166 sq. ft
Counted as living area: Yes

Heated: Yes
Finished: Yes
Enclosed: Yes
Contiguous: Yes
Permitted: Yes
Wet space: No
Addition: No
Conversion: No

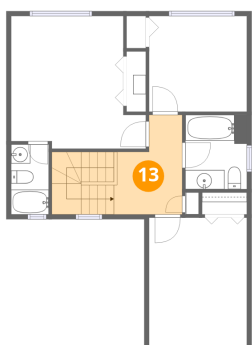
12 Floor 3 - Bedroom



Dimensions: 10'2" x 13'4"
Area: 136 sq. ft
Counted as living area: Yes

Heated: Yes
Finished: Yes
Enclosed: Yes
Contiguous: Yes
Permitted: Yes
Wet space: No
Addition: No
Conversion: No

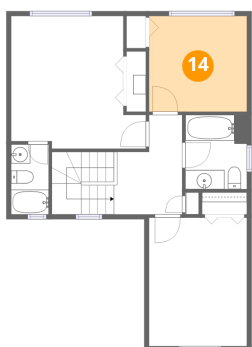
13 Floor 3 - Hall



Dimensions: 7'1" x 10'4"
Area: 101 sq. ft
Counted as living area: Yes

Heated: Yes
Finished: Yes
Enclosed: Yes
Contiguous: Yes
Permitted: Yes
Wet space: No
Addition: No
Conversion: No

14 Floor 3 - Bedroom

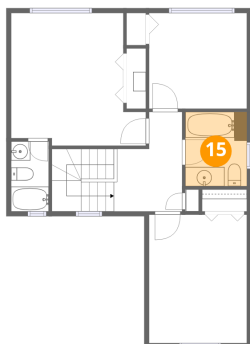


Dimensions: 10'2" x 9'11"
Area: 101 sq. ft
Counted as living area: Yes

Heated: Yes
Finished: Yes
Enclosed: Yes
Contiguous: Yes
Permitted: Yes
Wet space: No
Addition: No
Conversion: No

2330 Marine Drive, Bronte, Oakville, Halton County, Ontario,
Canada, L6L 1C3

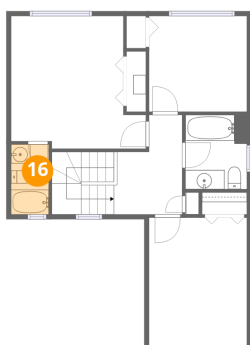
15 Floor 3 - Bath



Dimensions: 6'5" x 7'8"
Area: 49 sq. ft
Counted as living area: Yes

Heated: Yes
Finished: Yes
Enclosed: Yes
Contiguous: Yes
Permitted: Yes
Wet space: Yes
Addition: No
Conversion: No

16 Floor 3 - Bath



Dimensions: 3'11" x 7'3"
Area: 28 sq. ft
Counted as living area: Yes

Heated: Yes
Finished: Yes
Enclosed: Yes
Contiguous: Yes
Permitted: Yes
Wet space: Yes
Addition: No
Conversion: No