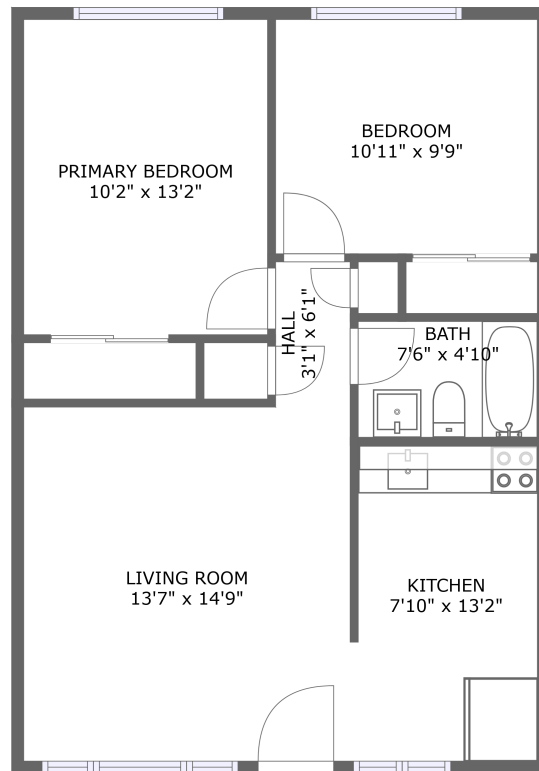


2329 Channing Way, South Campus, Berkeley, Alameda County, California, United States,



FLOOR 1

Property Summary


 **0** garages

 **2** bedrooms

 **1** bathrooms

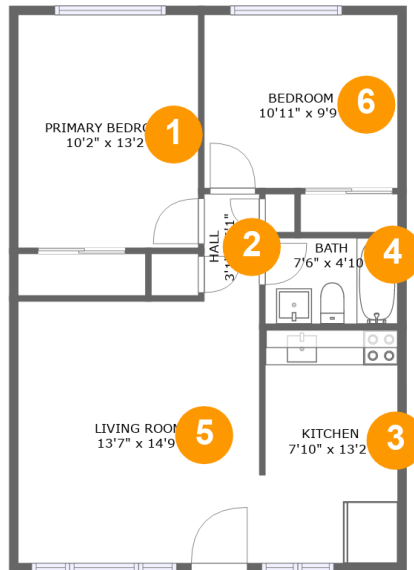
 **0** half baths

 **1** floors

 **664** Gross Living Area sqft

 **664** total sqft

2329 Channing Way, South Campus, Berkeley, Alameda County, California, United States,



Room Dimensions

Floor 1

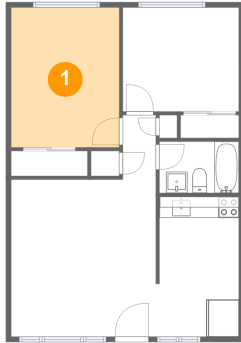
Total sqft: 664

Living area: 664

#	Room name	Dimensions	Area (sqft)	Counted as Living Area
1	Primary Bedroom	10'2" x 13'2"	134 sq. ft	Yes
2	Hall	3'1" x 6'1"	19 sq. ft	Yes
3	Kitchen	7'10" x 13'2"	100 sq. ft	Yes
4	Bath	7'6" x 4'10"	36 sq. ft	Yes
5	Living Room	13'7" x 14'9"	201 sq. ft	Yes
6	Bedroom	10'11" x 9'9"	107 sq. ft	Yes

2329 Channing Way, South Campus, Berkeley, Alameda County, California, United States,

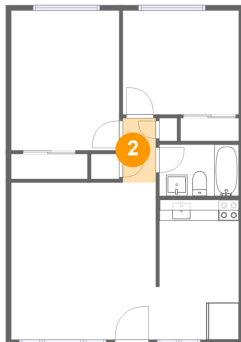
1 Floor 1 - Primary Bedroom



Dimensions: 10'2" x 13'2"
Area: 134 sq. ft
Counted as Living Area:
Yes

Heated: Yes
Finished: Yes
Enclosed: Yes
Contiguous:
Yes
Permitted: Yes
Wet Space: No
Addition: No
Conversion: No

2 Floor 1 - Hall

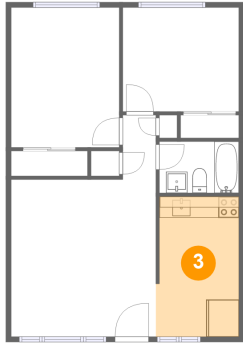


Dimensions: 3'1" x 6'1"
Area: 19 sq. ft
Counted as Living Area:
Yes

Heated: Yes
Finished: Yes
Enclosed: Yes
Contiguous:
Yes
Permitted: Yes
Wet Space: No
Addition: No
Conversion: No

2329 Channing Way, South Campus, Berkeley, Alameda County, California, United States,

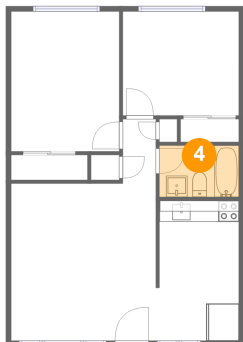
3 Floor 1 - Kitchen



Dimensions: 7'10" x 13'2"
Area: 100 sq. ft
Counted as Living Area:
Yes

Heated: Yes
Finished: Yes
Enclosed: Yes
Contiguous:
Yes
Permitted: Yes
Wet Space: No
Addition: No
Conversion: No

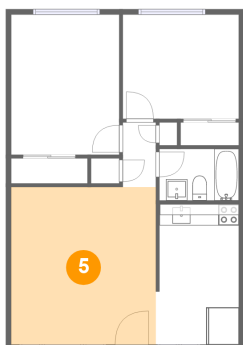
4 Floor 1 - Bath



Dimensions: 7'6" x 4'10"
Area: 36 sq. ft
Counted as Living Area:
Yes

Heated: Yes
Finished: Yes
Enclosed: Yes
Contiguous:
Yes
Permitted: Yes
Wet Space: Yes
Addition: No
Conversion: No

5 Floor 1 - Living Room

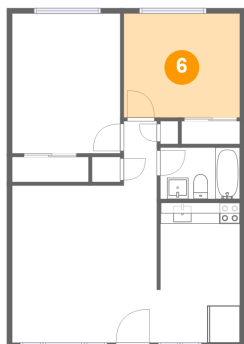


Dimensions: 13'7" x 14'9"
Area: 201 sq. ft
Counted as Living Area:
Yes

Heated: Yes
Finished: Yes
Enclosed: Yes
Contiguous:
Yes
Permitted: Yes
Wet Space: No
Addition: No
Conversion: No

**2329 Channing Way, South Campus, Berkeley,
Alameda County, California, United States,**

6 Floor 1 - Bedroom



Dimensions: 10'11" x 9'9"
Area: 107 sq. ft
Counted as Living Area:
Yes

Heated: Yes
Finished: Yes
Enclosed: Yes
Contiguous:
Yes
Permitted: Yes
Wet Space: No
Addition: No
Conversion: No