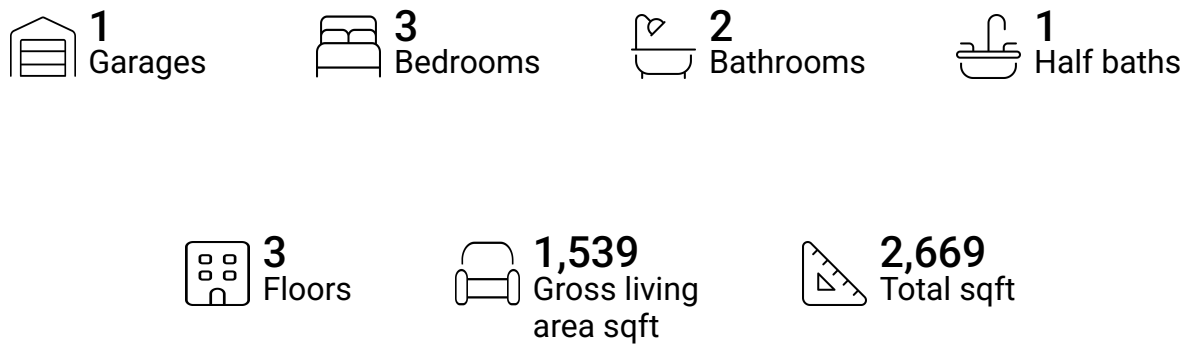


Home report

38 Ian Dr,Georgina,ON,CA



Property summary



Home report

38 Ian Dr,Georgina,ON,CA



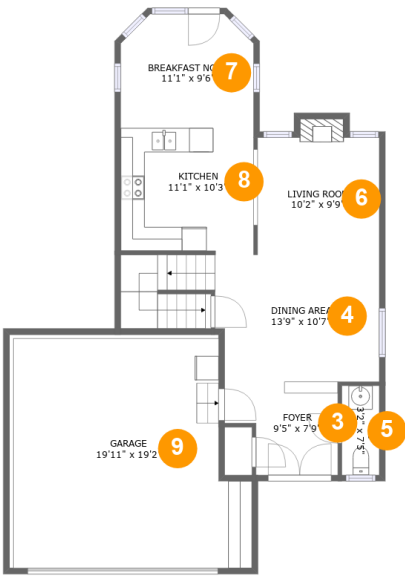
Room dimensions

Floor 1 Total sqft: 733 Living area: 0

#		Dimensions	sqft	Counted as living area
1	Storage	6'1" x 7'3"	45 sq. ft	No
2	Basement	21'7" x 37'4"	614 sq. ft	No

Home report

38 Ian Dr,Georgina,ON,CA



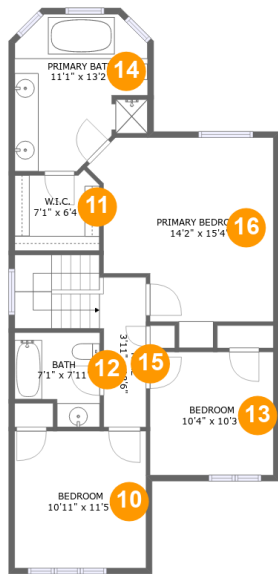
Room dimensions

Floor 2Total sqft: 1067 Living area: 670

#		Dimensions	sqft	Counted as living area
3	Foyer	9'5" x 7'9"	62 sq. ft	Yes
4	Dining Area	13'9" x 10'7"	188 sq. ft	Yes
5	WC	3'2" x 7'5"	23 sq. ft	Yes
6	Living Room	10'2" x 9'9"	105 sq. ft	Yes
7	Breakfast Nook	11'1" x 9'6"	100 sq. ft	Yes
8	Kitchen	11'1" x 10'3"	117 sq. ft	Yes
9	Garage	19'11" x 19'2"	361 sq. ft	No

Home report

38 Ian Dr,Georgina,ON,CA

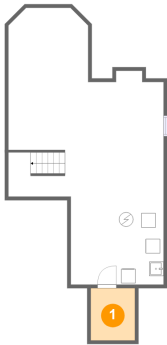


Room dimensions

Floor 3 Total sqft: 869 Living area: 869

#		Dimensions	sqft	Counted as living area
10	Bedroom	10'11" x 11'5"	125 sq. ft	Yes
11	W.I.C.	7'1" x 6'4"	44 sq. ft	Yes
12	Bath	7'1" x 7'11"	48 sq. ft	Yes
13	Bedroom	10'4" x 10'3"	106 sq. ft	Yes
14	Primary Bath	11'1" x 13'2"	125 sq. ft	Yes
15	Hall	3'11" x 12'6"	89 sq. ft	Yes
16	Primary Bedroom	14'2" x 15'4"	210 sq. ft	Yes

1 Floor 1 - Storage



Dimensions: 6'1" x 7'3"
Area: 45 sq. ft
Counted as living area: No

Heated: No
Finished: No
Enclosed: No
Contiguous: Yes
Permitted: Yes
Wet space: No
Addition: No
Conversion: No

2 Floor 1 - Basement



Dimensions: 21'7" x 37'4"
Area: 614 sq. ft
Counted as living area: No

Heated: Yes
Finished: No
Enclosed: Yes
Contiguous: Yes
Permitted: Yes
Wet space: No
Addition: No
Conversion: No

3 Floor 2 - Foyer



Dimensions: 9'5" x 7'9"
Area: 62 sq. ft
Counted as living area: Yes

Heated: Yes
Finished: Yes
Enclosed: Yes
Contiguous: Yes
Permitted: Yes
Wet space: No
Addition: No
Conversion: No

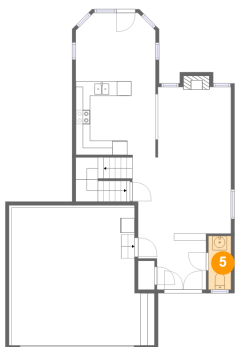
4 Floor 2 - Dining Area



Dimensions: 13'9" x 10'7"
Area: 188 sq. ft
Counted as living area: Yes

Heated: Yes
Finished: Yes
Enclosed: Yes
Contiguous: Yes
Permitted: Yes
Wet space: No
Addition: No
Conversion: No

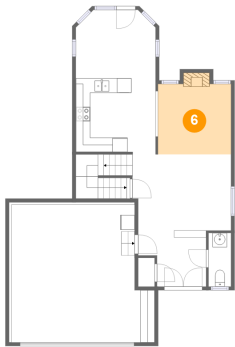
5 Floor 2 - WC



Dimensions: 3'2" x 7'5"
Area: 23 sq. ft
Counted as living area: Yes

Heated: Yes
Finished: Yes
Enclosed: Yes
Contiguous: Yes
Permitted: Yes
Wet space: Yes
Addition: No
Conversion: No

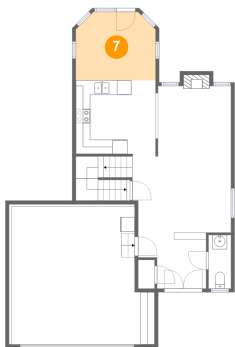
6 Floor 2 - Living Room



Dimensions: 10'2" x 9'9"
Area: 105 sq. ft
Counted as living area: Yes

Heated: Yes
Finished: Yes
Enclosed: Yes
Contiguous: Yes
Permitted: Yes
Wet space: No
Addition: No
Conversion: No

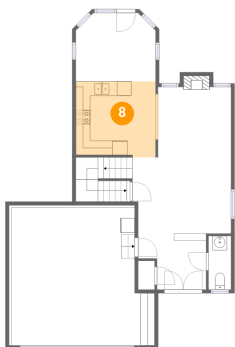
7 Floor 2 - Breakfast Nook



Dimensions: 11'1" x 9'6"
Area: 100 sq. ft
Counted as living area: Yes

Heated: Yes
Finished: Yes
Enclosed: Yes
Contiguous: Yes
Permitted: Yes
Wet space: No
Addition: No
Conversion: No

8 Floor 2 - Kitchen



Dimensions: 11'1" x 10'3"
Area: 117 sq. ft
Counted as living area: Yes

Heated: Yes
Finished: Yes
Enclosed: Yes
Contiguous: Yes
Permitted: Yes
Wet space: No
Addition: No
Conversion: No

9 Floor 2 - Garage



Dimensions: 19'11" x 19'2"
Area: 361 sq. ft
Counted as living area: No

Heated: No
Finished: No
Enclosed: Yes
Contiguous: Yes
Permitted: Yes
Wet space: No
Addition: No
Conversion: No

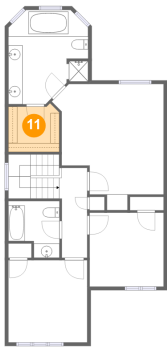
10 Floor 3 - Bedroom



Dimensions: 10'11" x 11'5"
Area: 125 sq. ft
Counted as living area: Yes

Heated: Yes
Finished: Yes
Enclosed: Yes
Contiguous: Yes
Permitted: Yes
Wet space: No
Addition: No
Conversion: No

11 Floor 3 - W.I.C.



Dimensions: 7'1" x 6'4"
Area: 44 sq. ft
Counted as living area: Yes

Heated: Yes
Finished: Yes
Enclosed: Yes
Contiguous: Yes
Permitted: Yes
Wet space: No
Addition: No
Conversion: No

12 Floor 3 - Bath



Dimensions: 7'1" x 7'11"
Area: 48 sq. ft
Counted as living area: Yes

Heated: Yes
Finished: Yes
Enclosed: Yes
Contiguous: Yes
Permitted: Yes
Wet space: Yes
Addition: No
Conversion: No

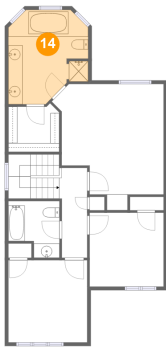
13 Floor 3 - Bedroom



Dimensions: 10'4" x 10'3"
Area: 106 sq. ft
Counted as living area: Yes

Heated: Yes
Finished: Yes
Enclosed: Yes
Contiguous: Yes
Permitted: Yes
Wet space: No
Addition: No
Conversion: No

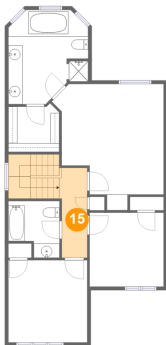
14 Floor 3 - Primary Bath



Dimensions: 11'1" x 13'2"
Area: 125 sq. ft
Counted as living area: Yes

Heated: Yes
Finished: Yes
Enclosed: Yes
Contiguous: Yes
Permitted: Yes
Wet space: Yes
Addition: No
Conversion: No

15 Floor 3 - Hall



Dimensions: 3'11" x 12'6"
Area: 89 sq. ft
Counted as living area: Yes

Heated: Yes
Finished: Yes
Enclosed: Yes
Contiguous: Yes
Permitted: Yes
Wet space: No
Addition: No
Conversion: No

16 Floor 3 - Primary Bedroom



Dimensions: 14'2" x 15'4"
Area: 210 sq. ft
Counted as living area: Yes

Heated: Yes
Finished: Yes
Enclosed: Yes
Contiguous: Yes
Permitted: Yes
Wet space: No
Addition: No
Conversion: No