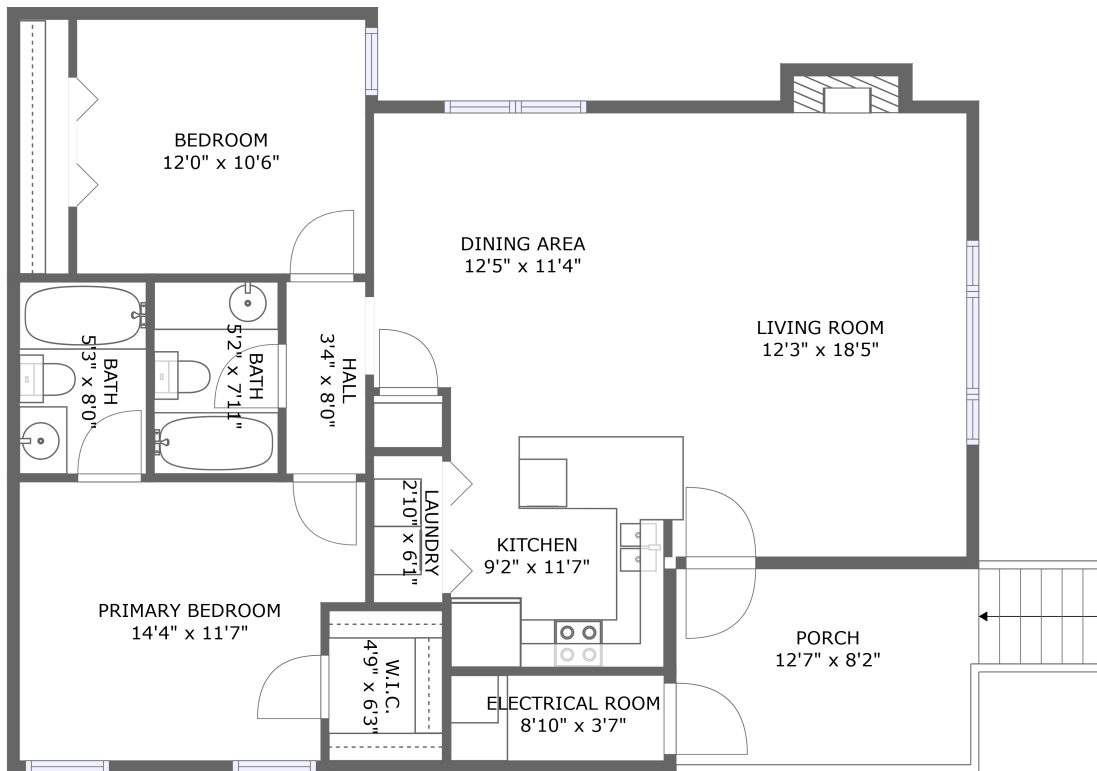


313 Waters Edge Lane, Clift Acres, Madison, Madison County, Alabama, United States, 35758




FLOOR 1

Property summary


 **0** Garages

 **2** Bedrooms

 **2** Bathrooms

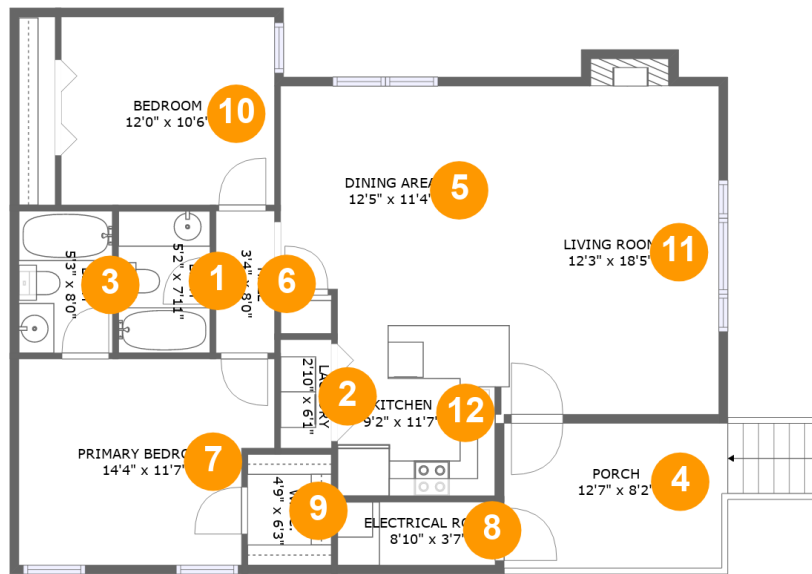
 **0** Half baths

 **1** Floors

 **979** Gross living area sqft

 **1,119** Total sqft

313 Waters Edge Lane, Clift Acres, Madison, Madison County, Alabama, United States, 35758



Room dimensions

Floor 1

Total sqft: 1119 Living area: 979

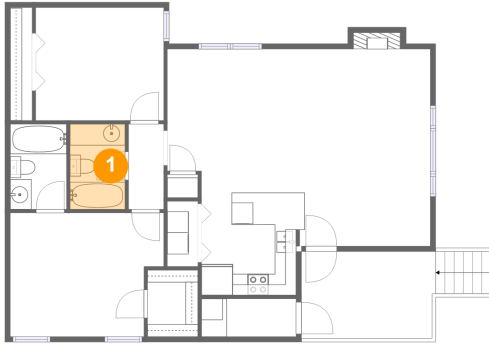
#		Dimensions	sqft	Counted as living area
1	Bath	5'2" x 7'11"	41 sq. ft	Yes
2	Laundry	2'10" x 6'1"	17 sq. ft	Yes
3	Bath	5'3" x 8'0"	42 sq. ft	Yes
4	Porch	12'7" x 8'2"	101 sq. ft	No
5	Dining Area	12'5" x 11'4"	141 sq. ft	Yes
6	Hall	3'4" x 8'0"	26 sq. ft	Yes
7	Primary Bedroom	14'4" x 11'7"	154 sq. ft	Yes
8	Electrical Room	8'10" x 3'7"	31 sq. ft	No
9	W.I.C.	4'9" x 6'3"	29 sq. ft	Yes
10	Bedroom	12'0" x 10'6"	127 sq. ft	Yes
11	Living Room	12'3" x 18'5"	232 sq. ft	Yes

**313 Waters Edge Lane, Clift Acres, Madison, Madison
County, Alabama, United States, 35758**

#		Dimensions	sqft	Counted as living area
12	Kitchen	9'2" x 11'7"	105 sq. ft	Yes

313 Waters Edge Lane, Clift Acres, Madison, Madison County, Alabama, United States, 35758

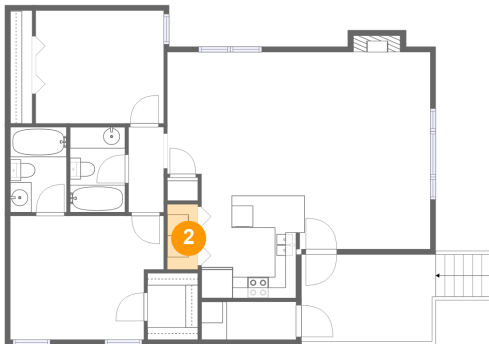
1 Floor 1 - Bath



Dimensions: 5'2" x 7'11"
Area: 41 sq. ft
Counted as living area: Yes

Heated: Yes
Finished: Yes
Enclosed: Yes
Contiguous: Yes
Permitted: Yes
Wet space: Yes
Addition: No
Conversion: No

2 Floor 1 - Laundry

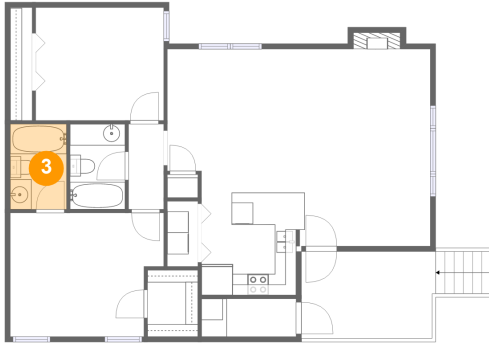


Dimensions: 2'10" x 6'1"
Area: 17 sq. ft
Counted as living area: Yes

Heated: Yes
Finished: Yes
Enclosed: Yes
Contiguous: Yes
Permitted: Yes
Wet space: No
Addition: No
Conversion: No

313 Waters Edge Lane, Clift Acres, Madison, Madison County, Alabama, United States, 35758

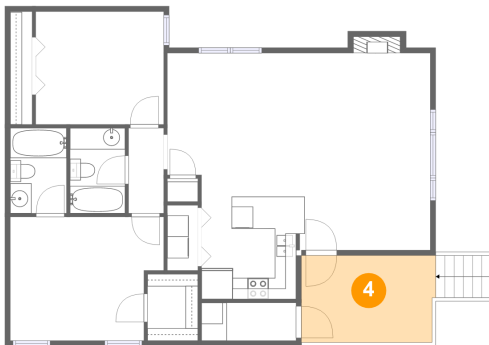
3 Floor 1 - Bath



Dimensions: 5'3" x 8'0"
Area: 42 sq. ft
Counted as living area: Yes

Heated: Yes
Finished: Yes
Enclosed: Yes
Contiguous: Yes
Permitted: Yes
Wet space: Yes
Addition: No
Conversion: No

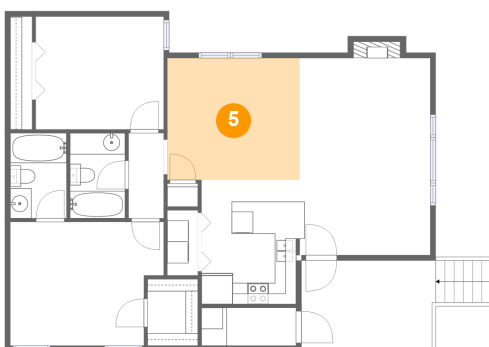
4 Floor 1 - Porch



Dimensions: 12'7" x 8'2"
Area: 101 sq. ft
Counted as living area: No

Heated: No
Finished: Yes
Enclosed: No
Contiguous: Yes
Permitted: Yes
Wet space: No
Addition: No
Conversion: No

5 Floor 1 - Dining Area

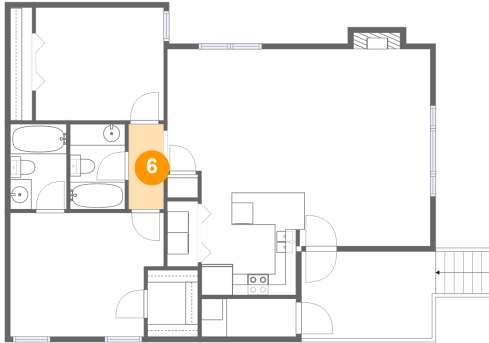


Dimensions: 12'5" x 11'4"
Area: 141 sq. ft
Counted as living area: Yes

Heated: Yes
Finished: Yes
Enclosed: Yes
Contiguous: Yes
Permitted: Yes
Wet space: No
Addition: No
Conversion: No

313 Waters Edge Lane, Clift Acres, Madison, Madison County, Alabama, United States, 35758

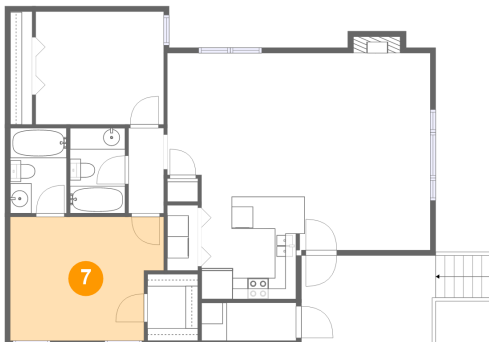
6 Floor 1 - Hall



Dimensions: 3'4" x 8'0"
Area: 26 sq. ft
Counted as living area: Yes

Heated: Yes
Finished: Yes
Enclosed: Yes
Contiguous: Yes
Permitted: Yes
Wet space: No
Addition: No
Conversion: No

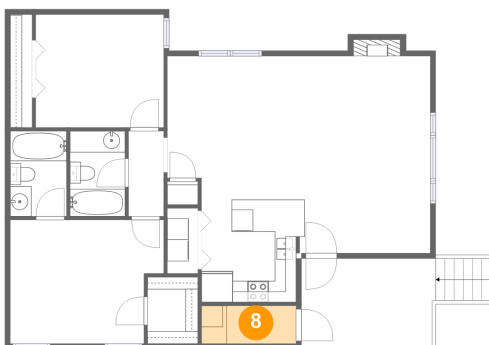
7 Floor 1 - Primary Bedroom



Dimensions: 14'4" x 11'7"
Area: 154 sq. ft
Counted as living area: Yes

Heated: Yes
Finished: Yes
Enclosed: Yes
Contiguous: Yes
Permitted: Yes
Wet space: No
Addition: No
Conversion: No

8 Floor 1 - Electrical Room

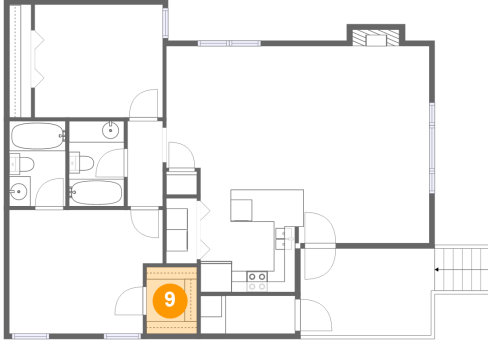


Dimensions: 8'10" x 3'7"
Area: 31 sq. ft
Counted as living area: No

Heated: No
Finished: No
Enclosed: Yes
Contiguous: Yes
Permitted: Yes
Wet space: No
Addition: No
Conversion: No

313 Waters Edge Lane, Clift Acres, Madison, Madison County, Alabama, United States, 35758

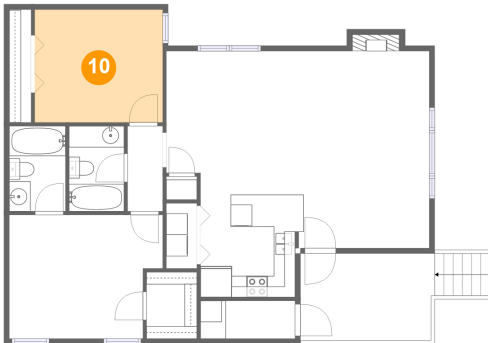
9 Floor 1 - W.I.C.



Dimensions: 4'9" x 6'3"
Area: 29 sq. ft
Counted as living area: Yes

Heated: Yes
Finished: Yes
Enclosed: Yes
Contiguous: Yes
Permitted: Yes
Wet space: No
Addition: No
Conversion: No

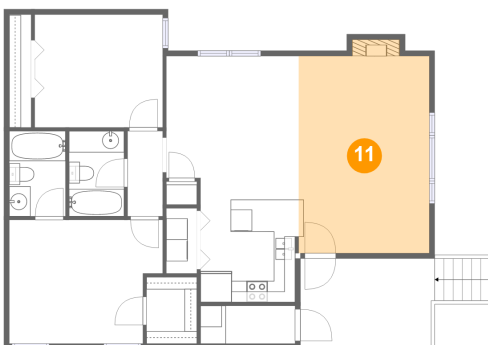
10 Floor 1 - Bedroom



Dimensions: 12'0" x 10'6"
Area: 127 sq. ft
Counted as living area: Yes

Heated: Yes
Finished: Yes
Enclosed: Yes
Contiguous: Yes
Permitted: Yes
Wet space: No
Addition: No
Conversion: No

11 Floor 1 - Living Room

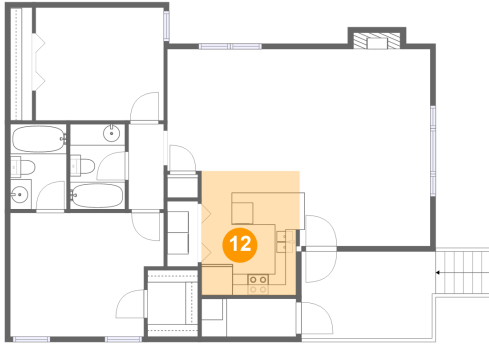


Dimensions: 12'3" x 18'5"
Area: 232 sq. ft
Counted as living area: Yes

Heated: Yes
Finished: Yes
Enclosed: Yes
Contiguous: Yes
Permitted: Yes
Wet space: No
Addition: No
Conversion: No

**313 Waters Edge Lane, Clift Acres, Madison, Madison
County, Alabama, United States, 35758**

12 Floor 1 - Kitchen



Dimensions: 9'2" x 11'7"
Area: 105 sq. ft
Counted as living area: Yes

Heated: Yes
Finished: Yes
Enclosed: Yes
Contiguous: Yes
Permitted: Yes
Wet space: No
Addition: No
Conversion: No