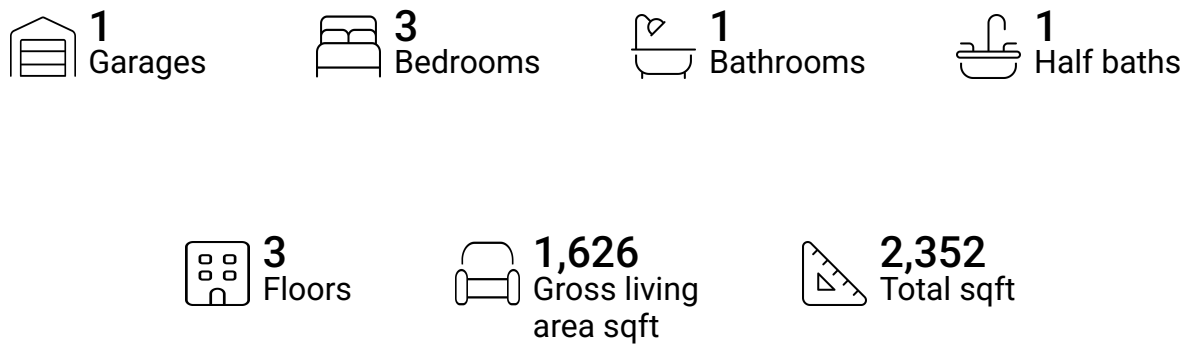


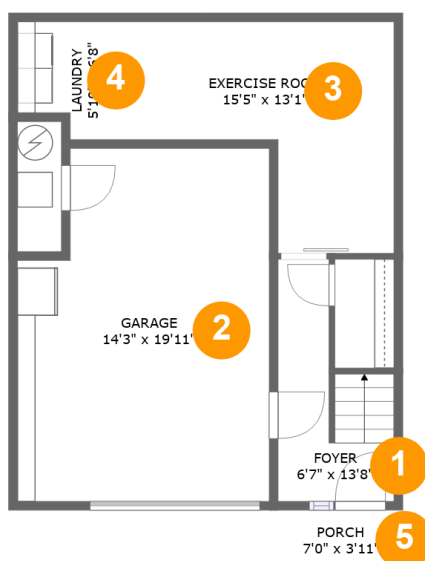
1204 Belview Ave SE, Roanoke, Virginia, United States



Property summary



1204 Belview Ave SE, Roanoke, Virginia, United States



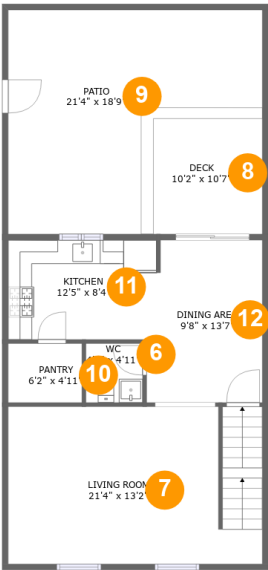
Room dimensions

Floor 1

Total sqft: 639 Living area: 312

#		Dimensions	sqft	Counted as living area
1	Entry	6'7" x 13'8"	65 sq. ft	Yes
2	Garage	14'3" x 19'11"	265 sq. ft	No
3	Exercise Room	15'5" x 13'1"	145 sq. ft	Yes
4	Utility	5'10" x 6'8"	35 sq. ft	Yes
5	Outdoor	7'0" x 3'11"	27 sq. ft	No

1204 Belview Ave SE, Roanoke, Virginia, United States

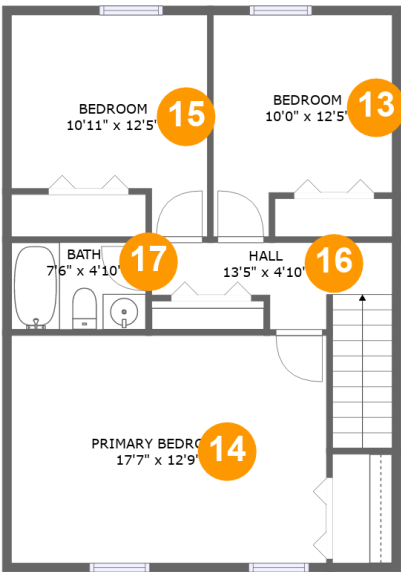


Room dimensions

Floor 2 **Total sqft: 1024** **Living area: 625**

#		Dimensions	sqft	Counted as living area
6	Bath	4'9" x 4'11"	24 sq. ft	Yes
7	Living Room	21'4" x 13'2"	277 sq. ft	Yes
8	Outdoor	10'2" x 10'7"	107 sq. ft	No
9	Outdoor	21'4" x 18'9"	292 sq. ft	No
10	Pantry	6'2" x 4'11"	31 sq. ft	Yes
11	Kitchen	12'5" x 8'4"	103 sq. ft	Yes
12	Dining Room	9'8" x 13'7"	124 sq. ft	Yes

1204 Bellevue Ave SE, Roanoke, Virginia, United States



Room dimensions

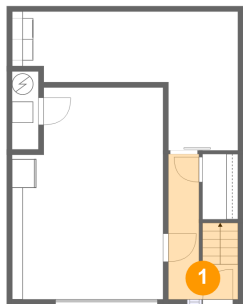
Floor 3

Total sqft: 689 Living area: 689

#		Dimensions	sqft	Counted as living area
13	Bedroom	10'0" x 12'5"	107 sq. ft	Yes
14	Bedroom	17'7" x 12'9"	224 sq. ft	Yes
15	Bedroom	10'11" x 12'5"	115 sq. ft	Yes
16	Hall	13'5" x 4'10"	74 sq. ft	Yes
17	Bath	7'6" x 4'10"	36 sq. ft	Yes

1204 Belview Ave SE, Roanoke, Virginia, United States

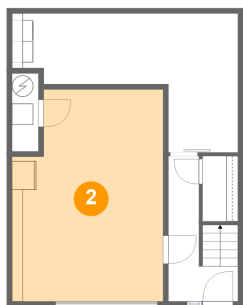
1 Floor 1 - Entry



Dimensions: 6'7" x 13'8"
Area: 65 sq. ft
Counted as living area: Yes

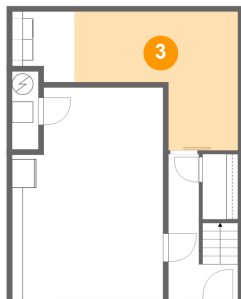
Heated: Yes
Finished: Yes
Enclosed: Yes
Contiguous: Yes
Permitted: Yes
Wet space: No
Addition: No
Conversion: No

2 Floor 1 - Garage



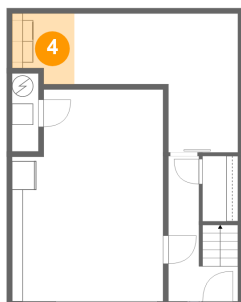
Dimensions: 14'3" x 19'11"
Area: 265 sq. ft
Counted as living area: No

Heated: No
Finished: No
Enclosed: Yes
Contiguous: Yes
Permitted: Yes
Wet space: No
Addition: No
Conversion: No

1204 Belview Ave SE, Roanoke, Virginia, United States**3 Floor 1 - Exercise Room**

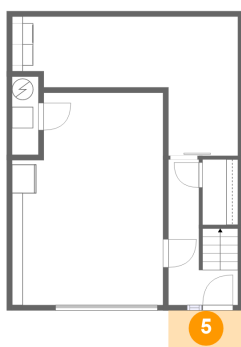
Dimensions: 15'5" x 13'1"
Area: 145 sq. ft
Counted as living area: Yes

Heated: Yes
Finished: Yes
Enclosed: Yes
Contiguous: Yes
Permitted: Yes
Wet space: No
Addition: No
Conversion: No

4 Floor 1 - Utility

Dimensions: 5'10" x 6'8"
Area: 35 sq. ft
Counted as living area: Yes

Heated: Yes
Finished: Yes
Enclosed: Yes
Contiguous: Yes
Permitted: Yes
Wet space: No
Addition: No
Conversion: No

5 Floor 1 - Outdoor

Dimensions: 7'0" x 3'11"
Area: 27 sq. ft
Counted as living area: No

Heated: No
Finished: Yes
Enclosed: No
Contiguous: Yes
Permitted: Yes
Wet space: No
Addition: No
Conversion: No

1204 Belview Ave SE, Roanoke, Virginia, United States

6 Floor 2 - Bath



Dimensions: 4'9" x 4'11"
Area: 24 sq. ft
Counted as living area: Yes

Heated: Yes
Finished: Yes
Enclosed: Yes
Contiguous: Yes
Permitted: Yes
Wet space: Yes
Addition: No
Conversion: No

7 Floor 2 - Living Room



Dimensions: 21'4" x 13'2"
Area: 277 sq. ft
Counted as living area: Yes

Heated: Yes
Finished: Yes
Enclosed: Yes
Contiguous: Yes
Permitted: Yes
Wet space: No
Addition: No
Conversion: No

8 Floor 2 - Outdoor

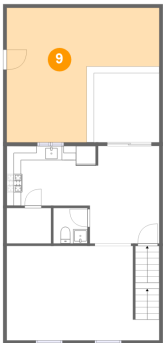


Dimensions: 10'2" x 10'7"
Area: 107 sq. ft
Counted as living area: No

Heated: No
Finished: Yes
Enclosed: No
Contiguous: Yes
Permitted: Yes
Wet space: No
Addition: No
Conversion: No

1204 Belview Ave SE, Roanoke, Virginia, United States

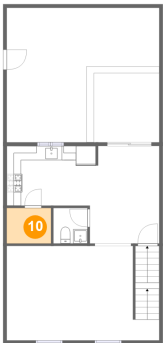
9 Floor 2 - Outdoor



Dimensions: 21'4" x 18'9"
Area: 292 sq. ft
Counted as living area: No

Heated: No
Finished: Yes
Enclosed: No
Contiguous: Yes
Permitted: Yes
Wet space: No
Addition: No
Conversion: No

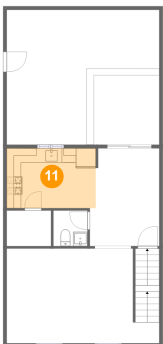
10 Floor 2 - Pantry



Dimensions: 6'2" x 4'11"
Area: 31 sq. ft
Counted as living area: Yes

Heated: Yes
Finished: Yes
Enclosed: Yes
Contiguous: Yes
Permitted: Yes
Wet space: No
Addition: No
Conversion: No

11 Floor 2 - Kitchen



Dimensions: 12'5" x 8'4"
Area: 103 sq. ft
Counted as living area: Yes

Heated: Yes
Finished: Yes
Enclosed: Yes
Contiguous: Yes
Permitted: Yes
Wet space: No
Addition: No
Conversion: No

1204 Belview Ave SE, Roanoke, Virginia, United States

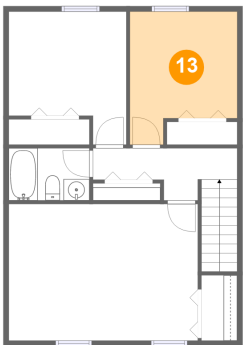
12 Floor 2 - Dining Room



Dimensions: 9'8" x 13'7"
Area: 124 sq. ft
Counted as living area: Yes

Heated: Yes
Finished: Yes
Enclosed: Yes
Contiguous: Yes
Permitted: Yes
Wet space: No
Addition: No
Conversion: No

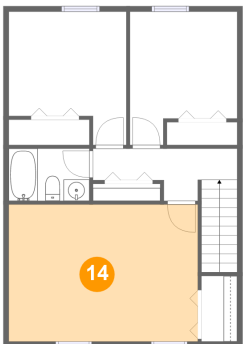
13 Floor 3 - Bedroom



Dimensions: 10'0" x 12'5"
Area: 107 sq. ft
Counted as living area: Yes

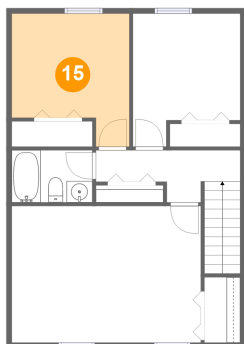
Heated: Yes
Finished: Yes
Enclosed: Yes
Contiguous: Yes
Permitted: Yes
Wet space: No
Addition: No
Conversion: No

14 Floor 3 - Bedroom



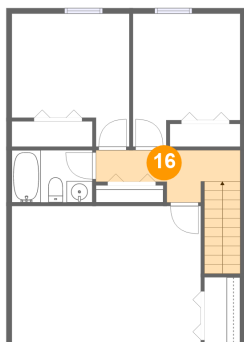
Dimensions: 17'7" x 12'9"
Area: 224 sq. ft
Counted as living area: Yes

Heated: Yes
Finished: Yes
Enclosed: Yes
Contiguous: Yes
Permitted: Yes
Wet space: No
Addition: No
Conversion: No

1204 Belview Ave SE, Roanoke, Virginia, United States**15 Floor 3 - Bedroom**

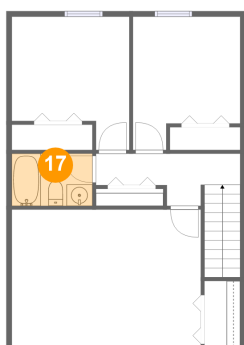
Dimensions: 10'11" x 12'5"
Area: 115 sq. ft
Counted as living area: Yes

Heated: Yes
Finished: Yes
Enclosed: Yes
Contiguous: Yes
Permitted: Yes
Wet space: No
Addition: No
Conversion: No

16 Floor 3 - Hall

Dimensions: 13'5" x 4'10"
Area: 74 sq. ft
Counted as living area: Yes

Heated: Yes
Finished: Yes
Enclosed: Yes
Contiguous: Yes
Permitted: Yes
Wet space: No
Addition: No
Conversion: No

17 Floor 3 - Bath

Dimensions: 7'6" x 4'10"
Area: 36 sq. ft
Counted as living area: Yes

Heated: Yes
Finished: Yes
Enclosed: Yes
Contiguous: Yes
Permitted: Yes
Wet space: Yes
Addition: No
Conversion: No