

Home report

2603 Rutrough Road Southeast, Roanoke, Roanoke County,  
Virginia, United States, 24014



**Total GLA: 1057 sq. ft**

Below Ground: 655 sq. ft, Floor 2: 705 sq. ft, Floor 3: 352 sq. ft  
Excluded: Porch 123 sq. ft, Balcony 295 sq. ft, Low ceiling 188 sq. ft

**Property summary**

 **3** Floors

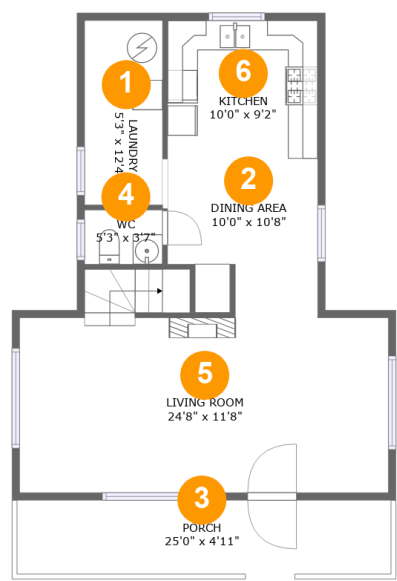
 **1** Bedrooms

 **2** Bathrooms

 **1** Half baths

Home report

2603 Rutrough Road Southeast, Roanoke, Roanoke County,  
Virginia, United States, 24014



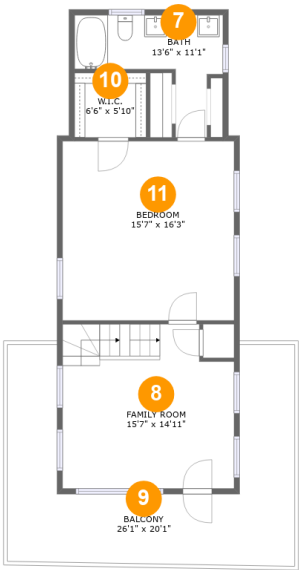
Room dimensions

Floor 1 Below ground Total:655sqft    Excluded: 123sqft

#		Max Dimensions	sqft	Included
1	Laundry	5'3" x 12'4"	64 sq. ft	Yes
2	Dining Area	10'0" x 10'8"	98 sq. ft	Yes
3	Porch	25'0" x 4'11"	123 sq. ft	No
4	WC	5'3" x 3'7"	19 sq. ft	Yes
5	Living Room	24'8" x 11'8"	310 sq. ft	Yes
6	Kitchen	10'0" x 9'2"	92 sq. ft	Yes

Home report

2603 Rutrough Road Southeast, Roanoke, Roanoke County,  
Virginia, United States, 24014



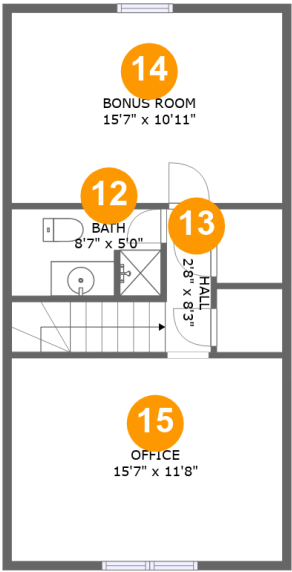
Room dimensions

Floor 2 Total:705sqft    Excluded: 295sqft

#		Max Dimensions	sqft	Included
7	Bath	13'6" x 11'1"	85 sq. ft	Yes
8	Family Room	15'7" x 14'11"	222 sq. ft	Yes
9	Balcony	26'1" x 20'1"	295 sq. ft	No
10	W.I.C.	6'6" x 5'10"	38 sq. ft	Yes
11	Bedroom	15'7" x 16'3"	254 sq. ft	Yes

Home report

2603 Rutrough Road Southeast, Roanoke, Roanoke County,  
Virginia, United States, 24014



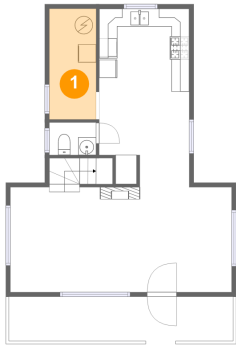
Room dimensions

Floor 3 Total:352sqft Excluded: 188sqft

#		Max Dimensions	sqft	Included
12	Bath	8'7" x 5'0"	33 sq. ft	Yes
13	Hall	2'8" x 8'3"	47 sq. ft	Yes
14	Bonus Room	15'7" x 10'11"	106 sq. ft	Yes
15	Office	15'7" x 11'8"	114 sq. ft	Yes

2603 Rutrough Road Southeast, Roanoke, Roanoke County,  
Virginia, United States, 24014

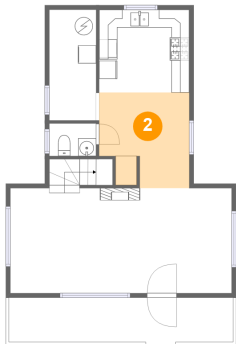
1 Floor 1 - Laundry



Max Dimensions: 5'3" x 12'4"  
Calculated Area: 64 sq. ft  
Included: Yes

Heated: Yes  
Finished: Yes  
Enclosed: Yes  
Contiguous: Yes  
Permitted: Yes  
Wet space: No  
Addition: No  
Conversion: No

2 Floor 1 - Dining Area

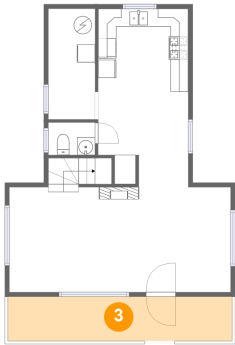


Max Dimensions: 10'0" x 10'8"  
Calculated Area: 98 sq. ft  
Included: Yes

Heated: Yes  
Finished: Yes  
Enclosed: Yes  
Contiguous: Yes  
Permitted: Yes  
Wet space: No  
Addition: No  
Conversion: No

2603 Rutrough Road Southeast, Roanoke, Roanoke County,  
Virginia, United States, 24014

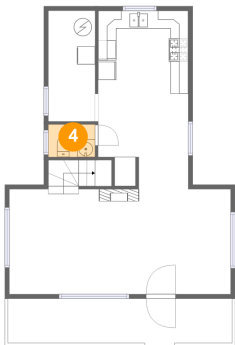
3 Floor 1 - Porch



Max Dimensions: 25'0" x 4'11"  
Calculated Area: 123 sq. ft  
Included: No

Heated: No  
Finished: Yes  
Enclosed: No  
Contiguous: Yes  
Permitted: Yes  
Wet space: No  
Addition: No  
Conversion: No

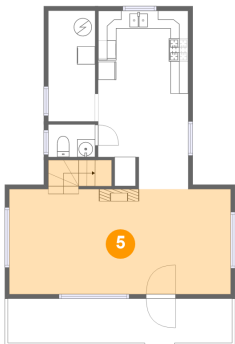
4 Floor 1 - WC



Max Dimensions: 5'3" x 3'7"  
Calculated Area: 19 sq. ft  
Included: Yes

Heated: Yes  
Finished: Yes  
Enclosed: Yes  
Contiguous: Yes  
Permitted: Yes  
Wet space: Yes  
Addition: No  
Conversion: No

5 Floor 1 - Living Room

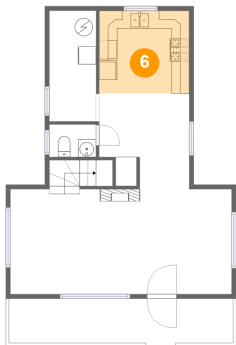


Max Dimensions: 24'8" x 11'8"  
Calculated Area: 310 sq. ft  
Included: Yes

Heated: Yes  
Finished: Yes  
Enclosed: Yes  
Contiguous: Yes  
Permitted: Yes  
Wet space: No  
Addition: No  
Conversion: No

2603 Rutrough Road Southeast, Roanoke, Roanoke County,  
Virginia, United States, 24014

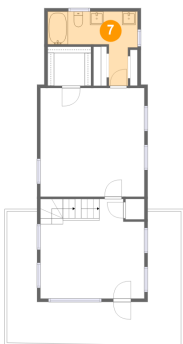
6 Floor 1 - Kitchen



Max Dimensions: 10'0" x 9'2"  
Calculated Area: 92 sq. ft  
Included: Yes

Heated: Yes  
Finished: Yes  
Enclosed: Yes  
Contiguous: Yes  
Permitted: Yes  
Wet space: No  
Addition: No  
Conversion: No

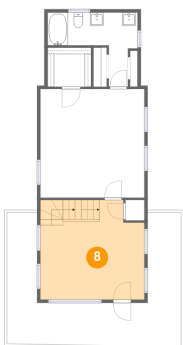
7 Floor 2 - Bath



Max Dimensions: 13'6" x 11'1"  
Calculated Area: 85 sq. ft  
Included: Yes

Heated: Yes  
Finished: Yes  
Enclosed: Yes  
Contiguous: Yes  
Permitted: Yes  
Wet space: Yes  
Addition: No  
Conversion: No

8 Floor 2 - Family Room

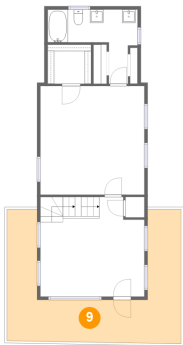


Max Dimensions: 15'7" x 14'11"  
Calculated Area: 222 sq. ft  
Included: Yes

Heated: Yes  
Finished: Yes  
Enclosed: Yes  
Contiguous: Yes  
Permitted: Yes  
Wet space: No  
Addition: No  
Conversion: No

2603 Rutrough Road Southeast, Roanoke, Roanoke County,  
Virginia, United States, 24014

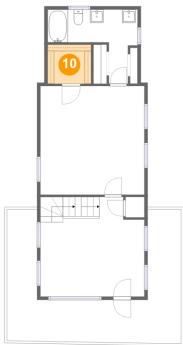
9 Floor 2 - Balcony



Max Dimensions: 26'1" x 20'1"  
Calculated Area: 295 sq. ft  
Included: No

Heated: No  
Finished: Yes  
Enclosed: No  
Contiguous: Yes  
Permitted: Yes  
Wet space: No  
Addition: No  
Conversion: No

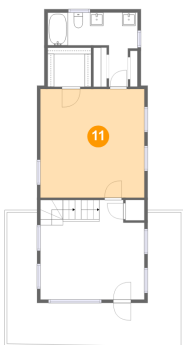
10 Floor 2 - W.I.C.



Max Dimensions: 6'6" x 5'10"  
Calculated Area: 38 sq. ft  
Included: Yes

Heated: Yes  
Finished: Yes  
Enclosed: Yes  
Contiguous: Yes  
Permitted: Yes  
Wet space: No  
Addition: No  
Conversion: No

11 Floor 2 - Bedroom



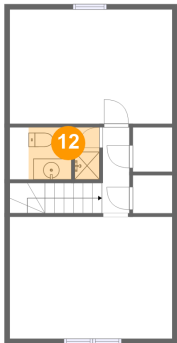
Max Dimensions: 15'7" x 16'3"  
Calculated Area: 254 sq. ft  
Included: Yes

Heated: Yes  
Finished: Yes  
Enclosed: Yes  
Contiguous: Yes  
Permitted: Yes  
Wet space: No  
Addition: No  
Conversion: No



2603 Rutrough Road Southeast, Roanoke, Roanoke County,  
Virginia, United States, 24014

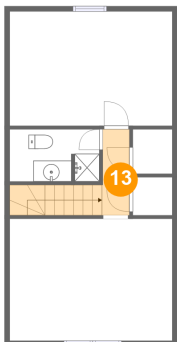
12 Floor 3 - Bath



Max Dimensions: 8'7" x 5'0"  
Calculated Area: 33 sq. ft  
Included: Yes

Heated: Yes  
Finished: Yes  
Enclosed: Yes  
Contiguous: Yes  
Permitted: Yes  
Wet space: Yes  
Addition: No  
Conversion: No

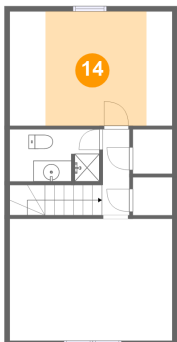
13 Floor 3 - Hall



Max Dimensions: 2'8" x 8'3"  
Calculated Area: 47 sq. ft  
Included: Yes

Heated: Yes  
Finished: Yes  
Enclosed: Yes  
Contiguous: Yes  
Permitted: Yes  
Wet space: No  
Addition: No  
Conversion: No

14 Floor 3 - Bonus Room

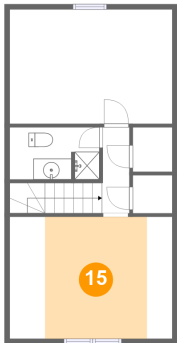


Max Dimensions: 15'7" x 10'11"  
Calculated Area: 106 sq. ft  
Included: Yes

Heated: Yes  
Finished: Yes  
Enclosed: Yes  
Contiguous: Yes  
Permitted: Yes  
Wet space: No  
Addition: No  
Conversion: No

2603 Rutrough Road Southeast, Roanoke, Roanoke County,  
Virginia, United States, 24014

15 Floor 3 - Office



Max Dimensions: 15'7" x 11'8"  
Calculated Area: 114 sq. ft  
Included: Yes

Heated: Yes  
Finished: Yes  
Enclosed: Yes  
Contiguous: Yes  
Permitted: Yes  
Wet space: No  
Addition: No  
Conversion: No