



Home report


357 Wiffen Private, Bells Corners West, Nepean, Ontario,
Canada, K2H 1G4





Property summary


 **1** Garages


 **2** Bedrooms

 **1** Bathrooms

 **1** Half baths

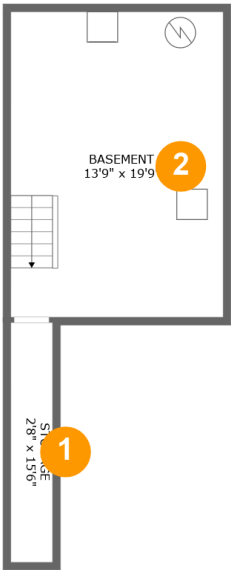
 **4** Floors

 **1,124** Gross living area sqft

 **2,033** Total sqft

Home report

357 Wiffen Private, Bells Corners West, Nepean, Ontario,
Canada, K2H 1G4



Room dimensions

Floor 1 Total sqft: 350 Living area: 0

#		Dimensions	sqft	Counted as living area
1	Storage	2'8" x 15'6"	42 sq. ft	No
2	Basement	13'9" x 19'9"	271 sq. ft	No

Home report

357 Wiffen Private, Bells Corners West, Nepean, Ontario,
Canada, K2H 1G4



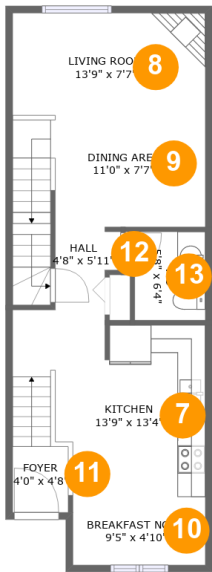
Room dimensions

Floor 2 Total sqft: 559 Living area: 0

#		Dimensions	sqft	Counted as living area
3	Laundry	10'8" x 7'10"	82 sq. ft	No
4	Garage	10'8" x 18'2"	183 sq. ft	No
5	Storage	2'8" x 14'5"	45 sq. ft	No
6	Recreation Room	13'9" x 13'0"	200 sq. ft	No

Home report

357 Wiffen Private, Bells Corners West, Nepean, Ontario,
Canada, K2H 1G4



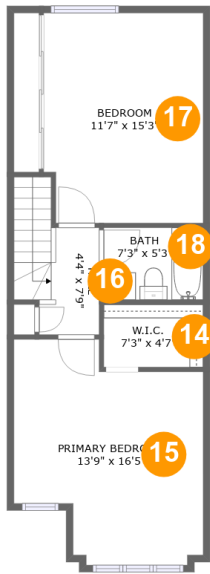
Room dimensions

Floor 3 Total sqft: 559 Living area: 559

#		Dimensions	sqft	Counted as living area
7	Kitchen	13'9" x 13'4"	160 sq. ft	Yes
8	Living Room	13'9" x 7'7"	105 sq. ft	Yes
9	Dining Area	11'0" x 7'7"	119 sq. ft	Yes
10	Breakfast Nook	9'5" x 4'10"	46 sq. ft	Yes
11	Foyer	4'0" x 4'8"	19 sq. ft	Yes
12	Hall	4'8" x 5'11"	24 sq. ft	Yes
13	WC	5'8" x 6'4"	34 sq. ft	Yes

Home report

357 Wiffen Private, Bells Corners West, Nepean, Ontario,
Canada, K2H 1G4



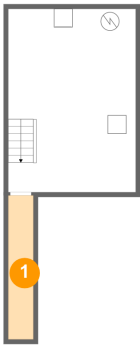
Room dimensions

Floor 4 Total sqft: 565 Living area: 565

#		Dimensions	sqft	Counted as living area
14	W.I.C.	7'3" x 4'7"	33 sq. ft	Yes
15	Primary Bedroom	13'9" x 16'5"	186 sq. ft	Yes
16	Hall	4'4" x 7'9"	53 sq. ft	Yes
17	Bedroom	11'7" x 15'3"	173 sq. ft	Yes
18	Bath	7'3" x 5'3"	38 sq. ft	Yes

357 Wiffen Private, Bells Corners West, Nepean, Ontario,
Canada, K2H 1G4

1 Floor 1 - Storage



Dimensions: 2'8" x 15'6"
Area: 42 sq. ft
Counted as living area: No

Heated: No
Finished: No
Enclosed: No
Contiguous: Yes
Permitted: Yes
Wet space: No
Addition: No
Conversion: No

2 Floor 1 - Basement



Dimensions: 13'9" x 19'9"
Area: 271 sq. ft
Counted as living area: No

Heated: Yes
Finished: No
Enclosed: Yes
Contiguous: Yes
Permitted: Yes
Wet space: No
Addition: No
Conversion: No

357 Wiffen Private, Bells Corners West, Nepean, Ontario,
Canada, K2H 1G4

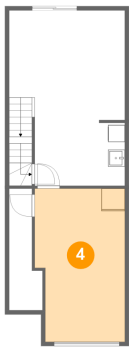
3 Floor 2 - Laundry



Dimensions: 10'8" x 7'10"
Area: 82 sq. ft
Counted as living area: No

Heated: Yes
Finished: Yes
Enclosed: Yes
Contiguous: No
Permitted: Yes
Wet space: No
Addition: No
Conversion: No

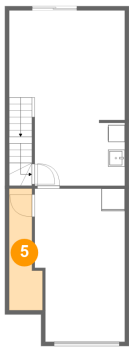
4 Floor 2 - Garage



Dimensions: 10'8" x 18'2"
Area: 183 sq. ft
Counted as living area: No

Heated: No
Finished: No
Enclosed: Yes
Contiguous: Yes
Permitted: Yes
Wet space: No
Addition: No
Conversion: No

5 Floor 2 - Storage

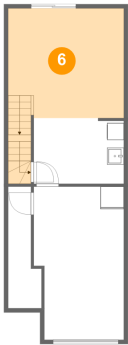


Dimensions: 2'8" x 14'5"
Area: 45 sq. ft
Counted as living area: No

Heated: No
Finished: No
Enclosed: No
Contiguous: Yes
Permitted: Yes
Wet space: No
Addition: No
Conversion: No

357 Wiffen Private, Bells Corners West, Nepean, Ontario,
Canada, K2H 1G4

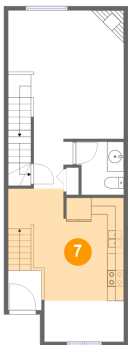
6 Floor 2 - Recreation Room



Dimensions: 13'9" x 13'0"
Area: 200 sq. ft
Counted as living area: No

Heated: Yes
Finished: Yes
Enclosed: Yes
Contiguous: No
Permitted: Yes
Wet space: No
Addition: No
Conversion: No

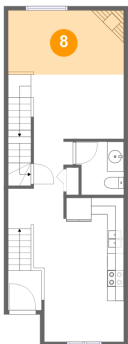
7 Floor 3 - Kitchen



Dimensions: 13'9" x 13'4"
Area: 160 sq. ft
Counted as living area: Yes

Heated: Yes
Finished: Yes
Enclosed: Yes
Contiguous: Yes
Permitted: Yes
Wet space: No
Addition: No
Conversion: No

8 Floor 3 - Living Room

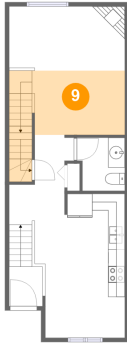


Dimensions: 13'9" x 7'7"
Area: 105 sq. ft
Counted as living area: Yes

Heated: Yes
Finished: Yes
Enclosed: Yes
Contiguous: Yes
Permitted: Yes
Wet space: No
Addition: No
Conversion: No

357 Wiffen Private, Bells Corners West, Nepean, Ontario,
Canada, K2H 1G4

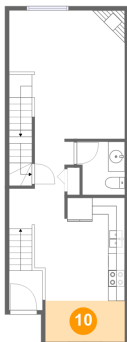
9 Floor 3 - Dining Area



Dimensions: 11'0" x 7'7"
Area: 119 sq. ft
Counted as living area: Yes

Heated: Yes
Finished: Yes
Enclosed: Yes
Contiguous: Yes
Permitted: Yes
Wet space: No
Addition: No
Conversion: No

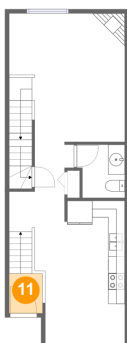
10 Floor 3 - Breakfast Nook



Dimensions: 9'5" x 4'10"
Area: 46 sq. ft
Counted as living area: Yes

Heated: Yes
Finished: Yes
Enclosed: Yes
Contiguous: Yes
Permitted: Yes
Wet space: No
Addition: No
Conversion: No

11 Floor 3 - Foyer



Dimensions: 4'0" x 4'8"
Area: 19 sq. ft
Counted as living area: Yes

Heated: Yes
Finished: Yes
Enclosed: Yes
Contiguous: Yes
Permitted: Yes
Wet space: No
Addition: No
Conversion: No

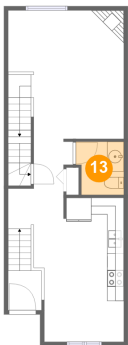
12 Floor 3 - Hall



Dimensions: 4'8" x 5'11"
Area: 24 sq. ft
Counted as living area: Yes

Heated: Yes
Finished: Yes
Enclosed: Yes
Contiguous: Yes
Permitted: Yes
Wet space: No
Addition: No
Conversion: No

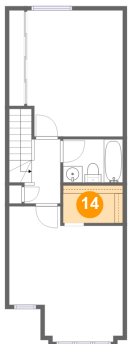
13 Floor 3 - WC



Dimensions: 5'8" x 6'4"
Area: 34 sq. ft
Counted as living area: Yes

Heated: Yes
Finished: Yes
Enclosed: Yes
Contiguous: Yes
Permitted: Yes
Wet space: Yes
Addition: No
Conversion: No

14 Floor 4 - W.I.C.

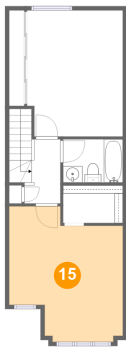


Dimensions: 7'3" x 4'7"
Area: 33 sq. ft
Counted as living area: Yes

Heated: Yes
Finished: Yes
Enclosed: Yes
Contiguous: Yes
Permitted: Yes
Wet space: No
Addition: No
Conversion: No

357 Wiffen Private, Bells Corners West, Nepean, Ontario,
Canada, K2H 1G4

15 Floor 4 - Primary Bedroom



Dimensions: 13'9" x 16'5"
Area: 186 sq. ft
Counted as living area: Yes

Heated: Yes
Finished: Yes
Enclosed: Yes
Contiguous: Yes
Permitted: Yes
Wet space: No
Addition: No
Conversion: No

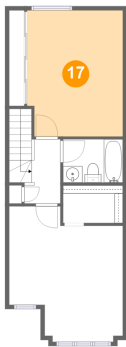
16 Floor 4 - Hall



Dimensions: 4'4" x 7'9"
Area: 53 sq. ft
Counted as living area: Yes

Heated: Yes
Finished: Yes
Enclosed: Yes
Contiguous: Yes
Permitted: Yes
Wet space: No
Addition: No
Conversion: No

17 Floor 4 - Bedroom

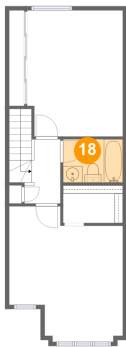


Dimensions: 11'7" x 15'3"
Area: 173 sq. ft
Counted as living area: Yes

Heated: Yes
Finished: Yes
Enclosed: Yes
Contiguous: Yes
Permitted: Yes
Wet space: No
Addition: No
Conversion: No

357 Wiffen Private, Bells Corners West, Nepean, Ontario,
Canada, K2H 1G4

18 Floor 4 - Bath



Dimensions: 7'3" x 5'3"
Area: 38 sq. ft
Counted as living area: Yes

Heated: Yes
Finished: Yes
Enclosed: Yes
Contiguous: Yes
Permitted: Yes
Wet space: Yes
Addition: No
Conversion: No