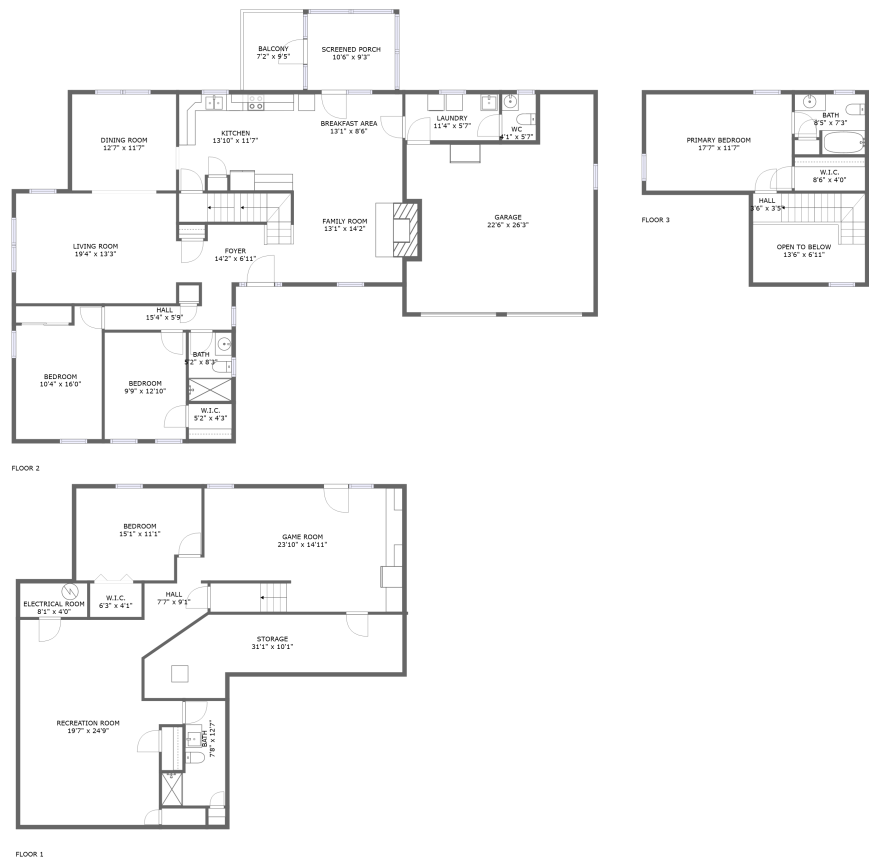



Home report

1506 Links View Dr,Salem,Virginia,United States




Property summary




1

Garages




4

Bedrooms



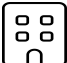
3

Bathrooms




1

Half baths




3

Floors



3,272

Gross living area sqft

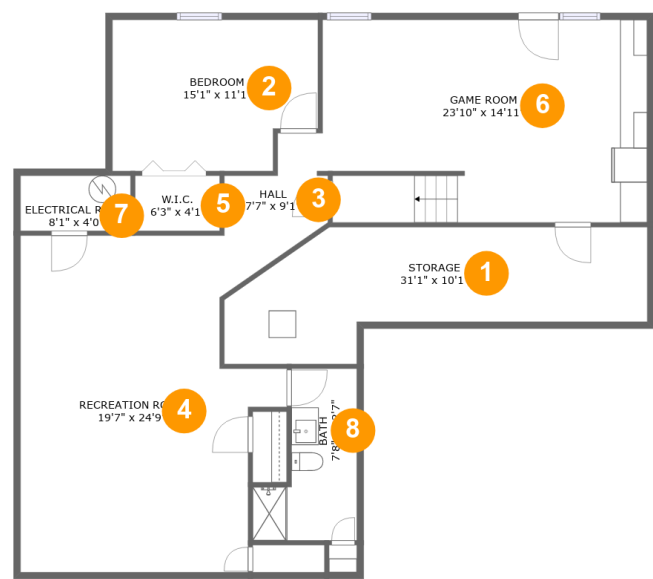


4,354

Total sqft

Home report

1506 Links View Dr,Salem,Virginia,United States



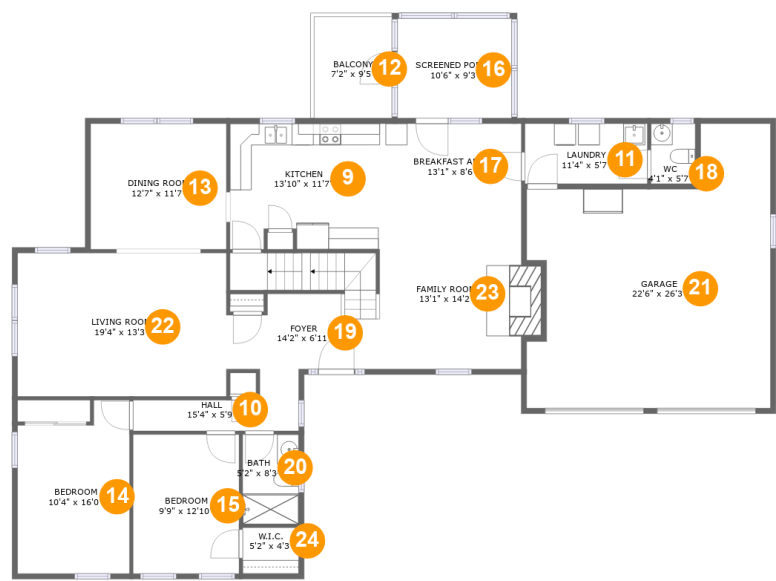
Room dimensions

Floor 1Total sqft: 1485    Living area: 1206

#		Dimensions	sqft	Counted as living area
1	Storage	31'1" x 10'1"	226 sq. ft	No
2	Bedroom	15'1" x 11'1"	157 sq. ft	Yes
3	Hall	7'7" x 9'1"	58 sq. ft	Yes
4	Recreation Room	19'7" x 24'9"	401 sq. ft	Yes
5	W.I.C.	6'3" x 4'1"	25 sq. ft	Yes
6	Game Room	23'10" x 14'11"	349 sq. ft	Yes
7	Electrical Room	8'1" x 4'0"	33 sq. ft	No
8	Bath	7'8" x 12'7"	72 sq. ft	Yes

Home report

1506 Links View Dr,Salem,Virginia,United States



Room dimensions

Floor 2

Total sqft: 2364

Living area: 1660

#		Dimensions	sqft	Counted as living area
9	Kitchen	13'10" x 11'7"	155 sq. ft	Yes
10	Hall	15'4" x 5'9"	54 sq. ft	Yes
11	Laundry	11'4" x 5'7"	63 sq. ft	Yes
12	Balcony	7'2" x 9'5"	67 sq. ft	No
13	Dining Room	12'7" x 11'7"	146 sq. ft	Yes
14	Bedroom	10'4" x 16'0"	149 sq. ft	Yes
15	Bedroom	9'9" x 12'10"	126 sq. ft	Yes
16	Screened Porch	10'6" x 9'3"	97 sq. ft	No
17	Breakfast Area	13'1" x 8'6"	112 sq. ft	Yes
18	WC	4'1" x 5'7"	23 sq. ft	Yes
19	Foyer	14'2" x 6'11"	138 sq. ft	Yes

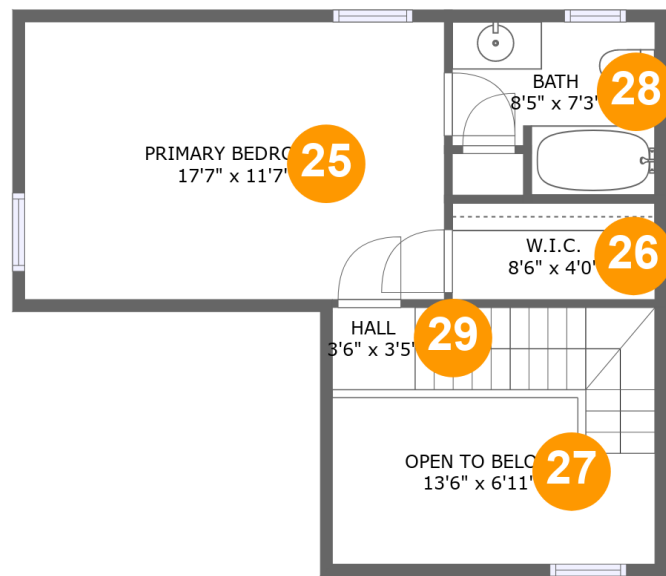
Home report

1506 Links View Dr,Salem,Virginia,United States

#		Dimensions	sqft	Counted as living area
20	Bath	5'2" x 8'3"	43 sq. ft	Yes
21	Garage	22'6" x 26'3"	481 sq. ft	No
22	Living Room	19'4" x 13'3"	256 sq. ft	Yes
23	Family Room	13'1" x 14'2"	197 sq. ft	Yes
24	W.I.C.	5'2" x 4'3"	22 sq. ft	Yes

Home report

1506 Links View Dr,Salem,Virginia,United States

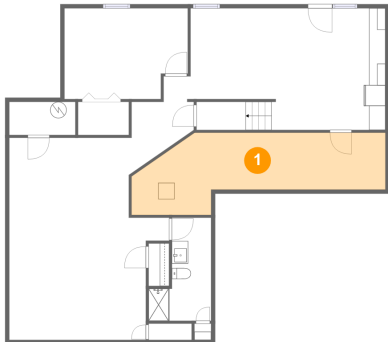


Room dimensions

Floor 3 Total sqft: 505 Living area: 406

#		Dimensions	sqft	Counted as living area
25	Primary Bedroom	17'7" x 11'7"	204 sq. ft	Yes
26	W.I.C.	8'6" x 4'0"	34 sq. ft	Yes
27	Open To Below	13'6" x 6'11"	86 sq. ft	No
28	Bath	8'5" x 7'3"	54 sq. ft	Yes
29	Hall	3'6" x 3'5"	58 sq. ft	Yes

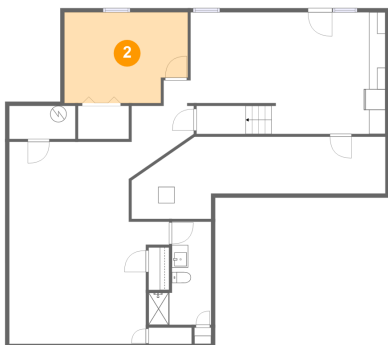
1 Floor 1 - Storage



Dimensions: 31'1" x 10'1"  
Area: 226 sq. ft  
Counted as living area: No

Heated: No  
Finished: No  
Enclosed: No  
Contiguous: Yes  
Permitted: Yes  
Wet space: No  
Addition: No  
Conversion: No

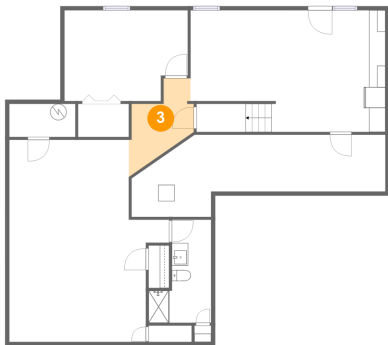
2 Floor 1 - Bedroom



Dimensions: 15'1" x 11'1"  
Area: 157 sq. ft  
Counted as living area: Yes

Heated: Yes  
Finished: Yes  
Enclosed: Yes  
Contiguous: Yes  
Permitted: Yes  
Wet space: No  
Addition: No  
Conversion: No

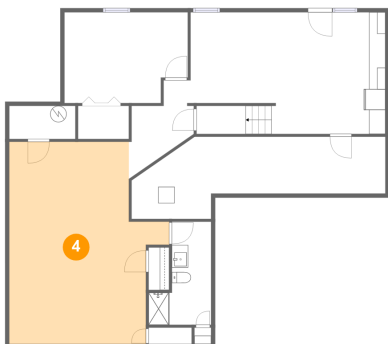
3 Floor 1 - Hall



Dimensions: 7'7" x 9'1"  
Area: 58 sq. ft  
Counted as living area: Yes

Heated: Yes  
Finished: Yes  
Enclosed: Yes  
Contiguous: Yes  
Permitted: Yes  
Wet space: No  
Addition: No  
Conversion: No

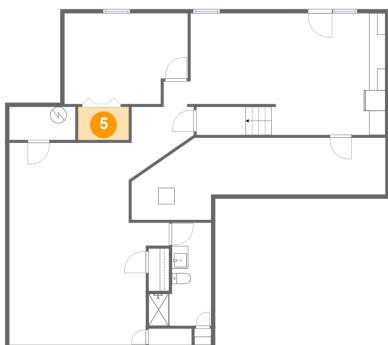
4 Floor 1 - Recreation Room



Dimensions: 19'7" x 24'9"  
Area: 401 sq. ft  
Counted as living area: Yes

Heated: Yes  
Finished: Yes  
Enclosed: Yes  
Contiguous: Yes  
Permitted: Yes  
Wet space: No  
Addition: No  
Conversion: No

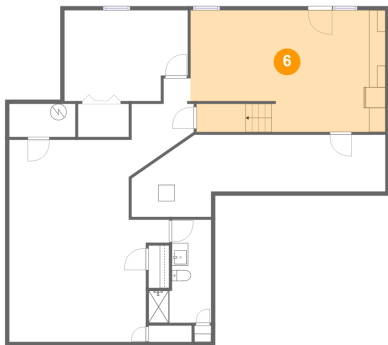
5 Floor 1 - W.I.C.



Dimensions: 6'3" x 4'1"  
Area: 25 sq. ft  
Counted as living area: Yes

Heated: Yes  
Finished: Yes  
Enclosed: Yes  
Contiguous: Yes  
Permitted: Yes  
Wet space: No  
Addition: No  
Conversion: No

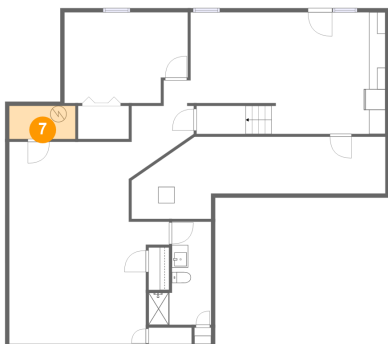
6 Floor 1 - Game Room



Dimensions: 23'10" x 14'11"  
Area: 349 sq. ft  
Counted as living area: Yes

Heated: Yes  
Finished: Yes  
Enclosed: Yes  
Contiguous: Yes  
Permitted: Yes  
Wet space: No  
Addition: No  
Conversion: No

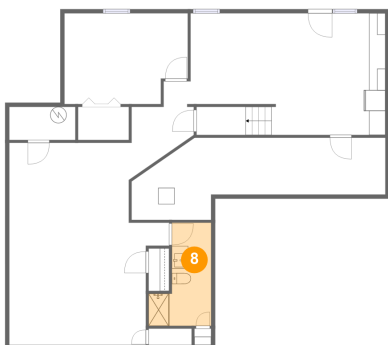
7 Floor 1 - Electrical Room



Dimensions: 8'1" x 4'0"  
Area: 33 sq. ft  
Counted as living area: No

Heated: No  
Finished: No  
Enclosed: Yes  
Contiguous: Yes  
Permitted: Yes  
Wet space: No  
Addition: No  
Conversion: No

8 Floor 1 - Bath



Dimensions: 7'8" x 12'7"  
Area: 72 sq. ft  
Counted as living area: Yes

Heated: Yes  
Finished: Yes  
Enclosed: Yes  
Contiguous: Yes  
Permitted: Yes  
Wet space: Yes  
Addition: No  
Conversion: No



## 9 Floor 2 - Kitchen



Dimensions: 13'10" x 11'7"  
Area: 155 sq. ft  
Counted as living area: Yes

Heated: Yes  
Finished: Yes  
Enclosed: Yes  
Contiguous: Yes  
Permitted: Yes  
Wet space: No  
Addition: No  
Conversion: No

## 10 Floor 2 - Hall



Dimensions: 15'4" x 5'9"  
Area: 54 sq. ft  
Counted as living area: Yes

Heated: Yes  
Finished: Yes  
Enclosed: Yes  
Contiguous: Yes  
Permitted: Yes  
Wet space: No  
Addition: No  
Conversion: No

## 11 Floor 2 - Laundry



Dimensions: 11'4" x 5'7"  
Area: 63 sq. ft  
Counted as living area: Yes

Heated: Yes  
Finished: Yes  
Enclosed: Yes  
Contiguous: Yes  
Permitted: Yes  
Wet space: No  
Addition: No  
Conversion: No

## 12 Floor 2 - Balcony



Dimensions: 7'2" x 9'5"  
Area: 67 sq. ft  
Counted as living area: No

Heated: No  
Finished: Yes  
Enclosed: No  
Contiguous: Yes  
Permitted: Yes  
Wet space: No  
Addition: No  
Conversion: No

## 13 Floor 2 - Dining Room



Dimensions: 12'7" x 11'7"  
Area: 146 sq. ft  
Counted as living area: Yes

Heated: Yes  
Finished: Yes  
Enclosed: Yes  
Contiguous: Yes  
Permitted: Yes  
Wet space: No  
Addition: No  
Conversion: No

## 14 Floor 2 - Bedroom



Dimensions: 10'4" x 16'0"  
Area: 149 sq. ft  
Counted as living area: Yes

Heated: Yes  
Finished: Yes  
Enclosed: Yes  
Contiguous: Yes  
Permitted: Yes  
Wet space: No  
Addition: No  
Conversion: No

15 Floor 2 - Bedroom



Dimensions: 9'9" x 12'10"  
Area: 126 sq. ft  
Counted as living area: Yes

Heated: Yes  
Finished: Yes  
Enclosed: Yes  
Contiguous: Yes  
Permitted: Yes  
Wet space: No  
Addition: No  
Conversion: No

16 Floor 2 - Screened Porch



Dimensions: 10'6" x 9'3"  
Area: 97 sq. ft  
Counted as living area: No

Heated: No  
Finished: Yes  
Enclosed: No  
Contiguous: Yes  
Permitted: Yes  
Wet space: No  
Addition: No  
Conversion: No

17 Floor 2 - Breakfast Area



Dimensions: 13'1" x 8'6"  
Area: 112 sq. ft  
Counted as living area: Yes

Heated: Yes  
Finished: Yes  
Enclosed: Yes  
Contiguous: Yes  
Permitted: Yes  
Wet space: No  
Addition: No  
Conversion: No

## 18 Floor 2 - WC



Dimensions: 4'1" x 5'7"  
Area: 23 sq. ft  
Counted as living area: Yes

Heated: Yes  
Finished: Yes  
Enclosed: Yes  
Contiguous: Yes  
Permitted: Yes  
Wet space: Yes  
Addition: No  
Conversion: No

## 19 Floor 2 - Foyer



Dimensions: 14'2" x 6'11"  
Area: 138 sq. ft  
Counted as living area: Yes

Heated: Yes  
Finished: Yes  
Enclosed: Yes  
Contiguous: Yes  
Permitted: Yes  
Wet space: No  
Addition: No  
Conversion: No

## 20 Floor 2 - Bath



Dimensions: 5'2" x 8'3"  
Area: 43 sq. ft  
Counted as living area: Yes

Heated: Yes  
Finished: Yes  
Enclosed: Yes  
Contiguous: Yes  
Permitted: Yes  
Wet space: Yes  
Addition: No  
Conversion: No

## 21 Floor 2 - Garage



Dimensions: 22'6" x 26'3"  
Area: 481 sq. ft  
Counted as living area: No

Heated: No  
Finished: No  
Enclosed: Yes  
Contiguous: Yes  
Permitted: Yes  
Wet space: No  
Addition: No  
Conversion: No

## 22 Floor 2 - Living Room



Dimensions: 19'4" x 13'3"  
Area: 256 sq. ft  
Counted as living area: Yes

Heated: Yes  
Finished: Yes  
Enclosed: Yes  
Contiguous: Yes  
Permitted: Yes  
Wet space: No  
Addition: No  
Conversion: No

## 23 Floor 2 - Family Room



Dimensions: 13'1" x 14'2"  
Area: 197 sq. ft  
Counted as living area: Yes

Heated: Yes  
Finished: Yes  
Enclosed: Yes  
Contiguous: Yes  
Permitted: Yes  
Wet space: No  
Addition: No  
Conversion: No

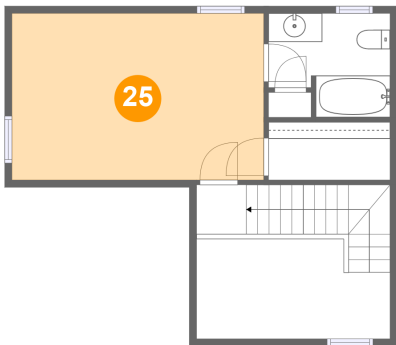
24 Floor 2 - W.I.C.



Dimensions: 5'2" x 4'3"  
Area: 22 sq. ft  
Counted as living area: Yes

Heated: Yes  
Finished: Yes  
Enclosed: Yes  
Contiguous: Yes  
Permitted: Yes  
Wet space: No  
Addition: No  
Conversion: No

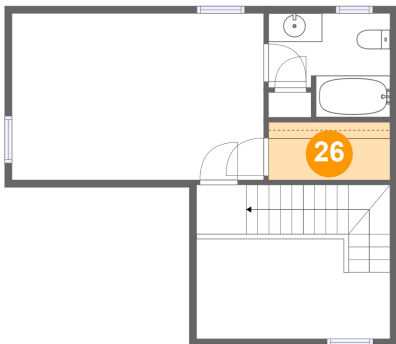
25 Floor 3 - Primary Bedroom



Dimensions: 17'7" x 11'7"  
Area: 204 sq. ft  
Counted as living area: Yes

Heated: Yes  
Finished: Yes  
Enclosed: Yes  
Contiguous: Yes  
Permitted: Yes  
Wet space: No  
Addition: No  
Conversion: No

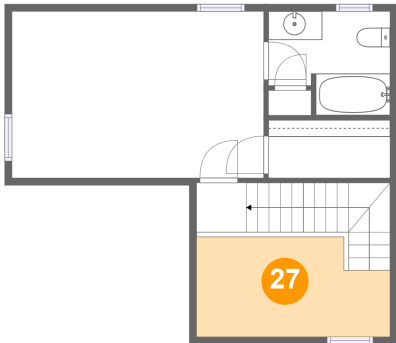
26 Floor 3 - W.I.C.



Dimensions: 8'6" x 4'0"  
Area: 34 sq. ft  
Counted as living area: Yes

Heated: Yes  
Finished: Yes  
Enclosed: Yes  
Contiguous: Yes  
Permitted: Yes  
Wet space: No  
Addition: No  
Conversion: No

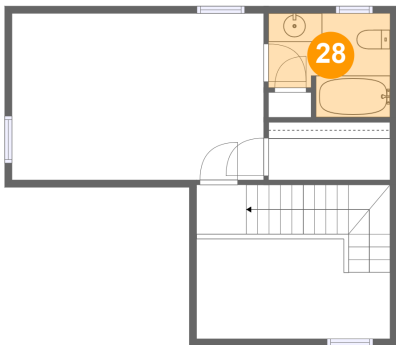
27 Floor 3 - Open To Below



Dimensions: 13'6" x 6'11"  
Area: 86 sq. ft  
Counted as living area: No

Heated: No  
Finished: No  
Enclosed: No  
Contiguous: Yes  
Permitted: No  
Wet space: No  
Addition: No  
Conversion: No

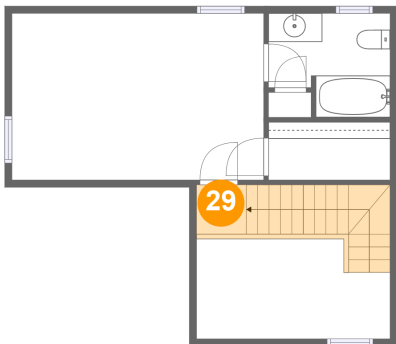
28 Floor 3 - Bath



Dimensions: 8'5" x 7'3"  
Area: 54 sq. ft  
Counted as living area: Yes

Heated: Yes  
Finished: Yes  
Enclosed: Yes  
Contiguous: Yes  
Permitted: Yes  
Wet space: Yes  
Addition: No  
Conversion: No

29 Floor 3 - Hall



Dimensions: 3'6" x 3'5"  
Area: 58 sq. ft  
Counted as living area: Yes

Heated: Yes  
Finished: Yes  
Enclosed: Yes  
Contiguous: Yes  
Permitted: Yes  
Wet space: No  
Addition: No  
Conversion: No