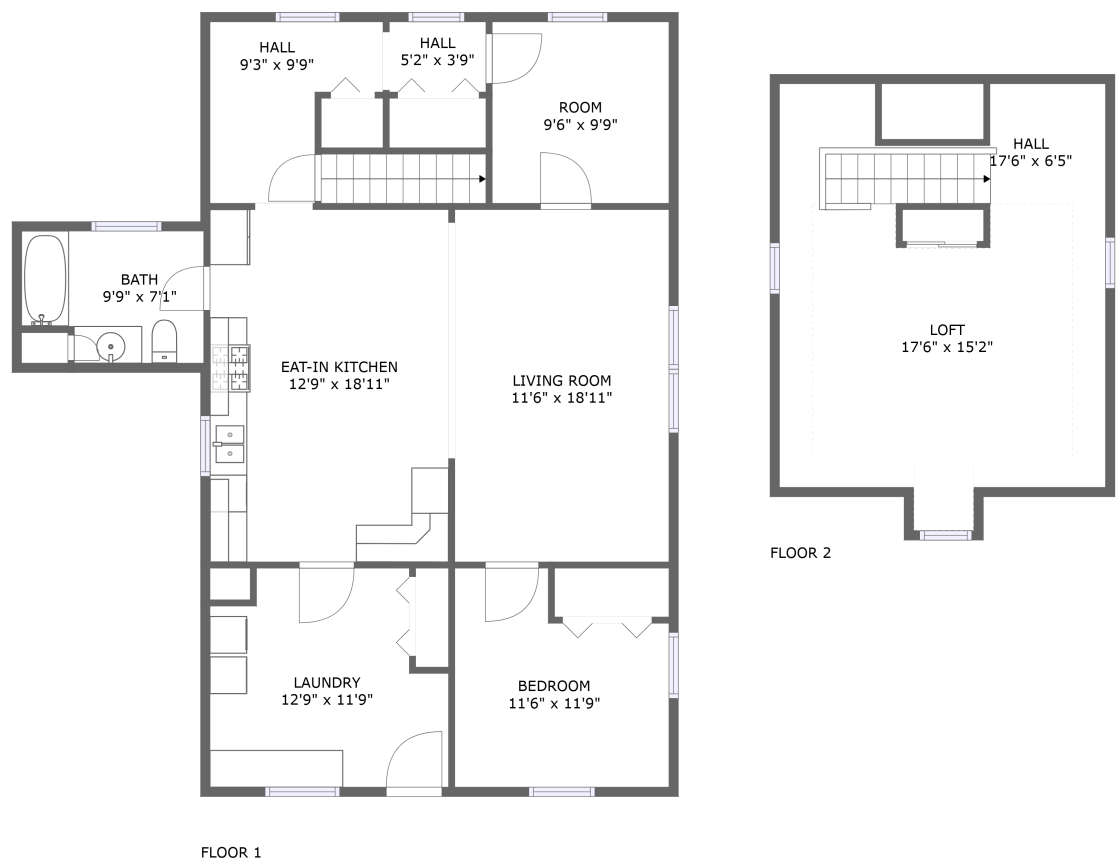



Home report


WY-211,Chugwater,WY,US




Property summary




0
Garages



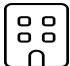
1
Bedrooms




1
Bathrooms




0
Half baths



2
Floors



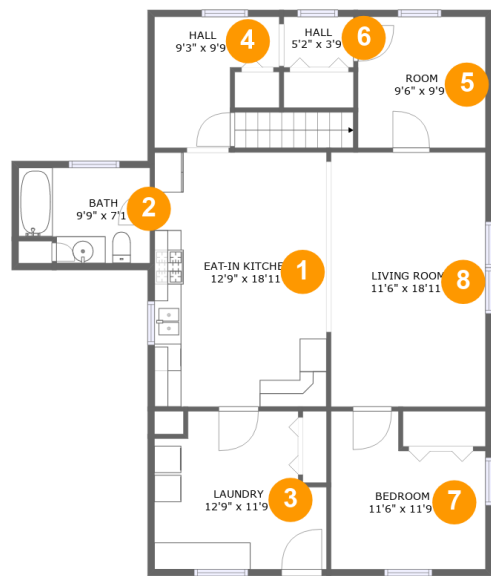
1,444
Gross living
area sqft



1,586
Total sqft

Home report

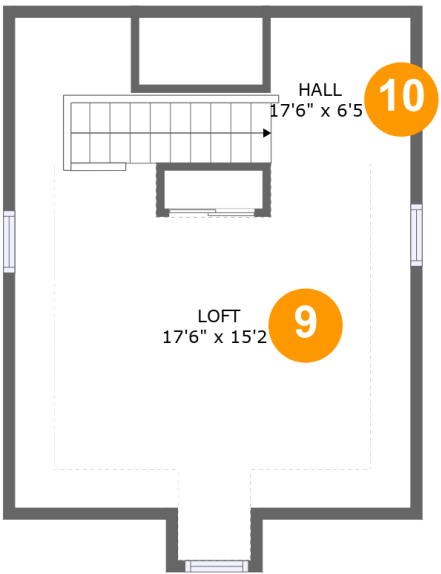
WY-211,Chugwater,WY,US



Room dimensions

Floor 1 Total sqft: 1158 Living area: 1158

#		Dimensions	sqft	Counted as living area
1	Eat-in Kitchen	12'9" x 18'11"	242 sq. ft	Yes
2	Bath	9'9" x 7'1"	64 sq. ft	Yes
3	Laundry	12'9" x 11'9"	133 sq. ft	Yes
4	Hall	9'3" x 9'9"	69 sq. ft	Yes
5	Room	9'6" x 9'9"	92 sq. ft	Yes
6	Hall	5'2" x 3'9"	20 sq. ft	Yes
7	Bedroom	11'6" x 11'9"	116 sq. ft	Yes
8	Living Room	11'6" x 18'11"	217 sq. ft	Yes



Room dimensions

Floor 2 Total sqft: 428 Living area: 286

#		Dimensions	sqft	Counted as living area
9	Loft	17'6" x 15'2"	191 sq. ft	Yes
10	Hall	17'6" x 6'5"	56 sq. ft	Yes

1 Floor 1 - Eat-in Kitchen



Dimensions: 12'9" x 18'11"
Area: 242 sq. ft
Counted as living area: Yes

Heated: Yes
Finished: Yes
Enclosed: Yes
Contiguous: Yes
Permitted: Yes
Wet space: No
Addition: No
Conversion: No

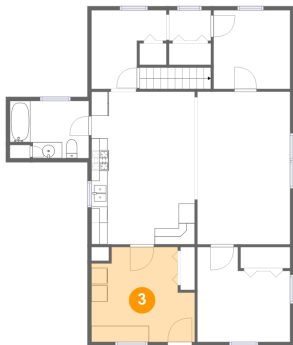
2 Floor 1 - Bath



Dimensions: 9'9" x 7'1"
Area: 64 sq. ft
Counted as living area: Yes

Heated: Yes
Finished: Yes
Enclosed: Yes
Contiguous: Yes
Permitted: Yes
Wet space: Yes
Addition: No
Conversion: No

3 Floor 1 - Laundry



Dimensions: 12'9" x 11'9"
Area: 133 sq. ft
Counted as living area: Yes

Heated: Yes
Finished: Yes
Enclosed: Yes
Contiguous: Yes
Permitted: Yes
Wet space: No
Addition: No
Conversion: No

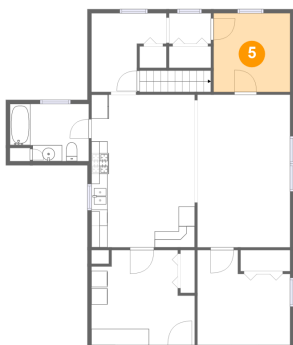
4 Floor 1 - Hall



Dimensions: 9'3" x 9'9"
Area: 69 sq. ft
Counted as living area: Yes

Heated: Yes
Finished: Yes
Enclosed: Yes
Contiguous: Yes
Permitted: Yes
Wet space: No
Addition: No
Conversion: No

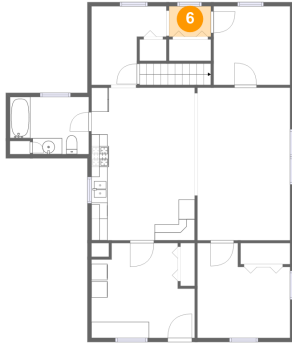
5 Floor 1 - Room



Dimensions: 9'6" x 9'9"
Area: 92 sq. ft
Counted as living area: Yes

Heated: Yes
Finished: Yes
Enclosed: Yes
Contiguous: Yes
Permitted: Yes
Wet space: No
Addition: No
Conversion: No

6 Floor 1 - Hall



Dimensions: 5'2" x 3'9"
Area: 20 sq. ft
Counted as living area: Yes

Heated: Yes
Finished: Yes
Enclosed: Yes
Contiguous: Yes
Permitted: Yes
Wet space: No
Addition: No
Conversion: No

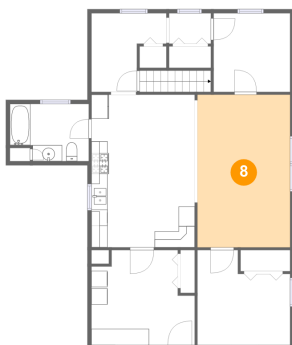
7 Floor 1 - Bedroom



Dimensions: 11'6" x 11'9"
Area: 116 sq. ft
Counted as living area: Yes

Heated: Yes
Finished: Yes
Enclosed: Yes
Contiguous: Yes
Permitted: Yes
Wet space: No
Addition: No
Conversion: No

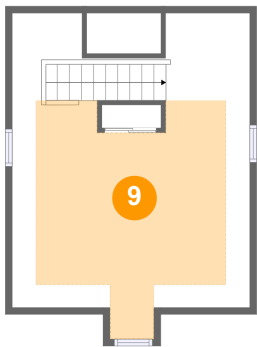
8 Floor 1 - Living Room



Dimensions: 11'6" x 18'11"
Area: 217 sq. ft
Counted as living area: Yes

Heated: Yes
Finished: Yes
Enclosed: Yes
Contiguous: Yes
Permitted: Yes
Wet space: No
Addition: No
Conversion: No

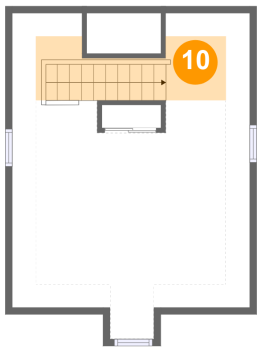
9 Floor 2 - Loft



Dimensions: 17'6" x 15'2"
Area: 191 sq. ft
Counted as living area: Yes

Heated: Yes
Finished: Yes
Enclosed: Yes
Contiguous: Yes
Permitted: Yes
Wet space: No
Addition: No
Conversion: No

10 Floor 2 - Hall



Dimensions: 17'6" x 6'5"
Area: 56 sq. ft
Counted as living area: Yes

Heated: Yes
Finished: Yes
Enclosed: Yes
Contiguous: Yes
Permitted: Yes
Wet space: No
Addition: No
Conversion: No