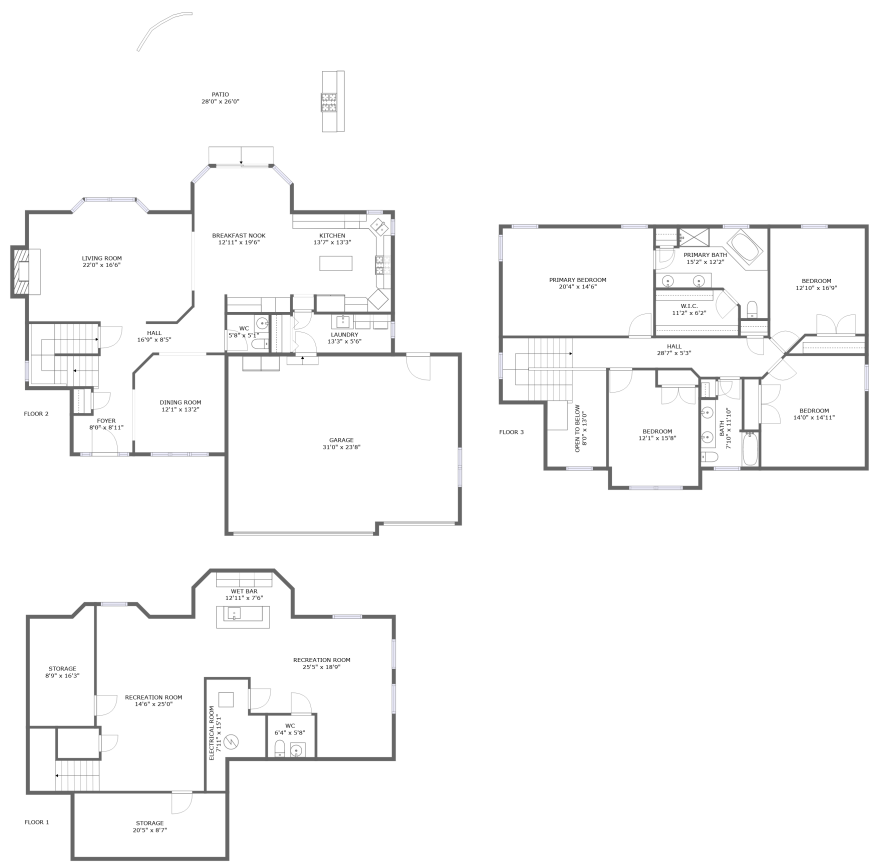





21025 Kenmare Drive, Shorewood, Will County,
Illinois, United States, 60404




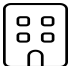
Property summary


 **1** Garages


 **4** Bedrooms

 **2** Bathrooms

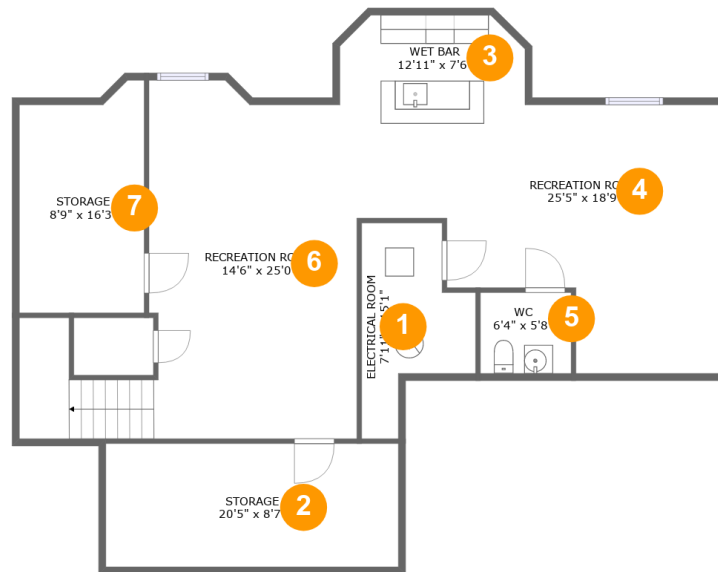
 **2** Half baths

 **3** Floors

 **3,884** Gross living area sqft

 **5,827** Total sqft

21025 Kenmare Drive, Shorewood, Will County,
Illinois, United States, 60404



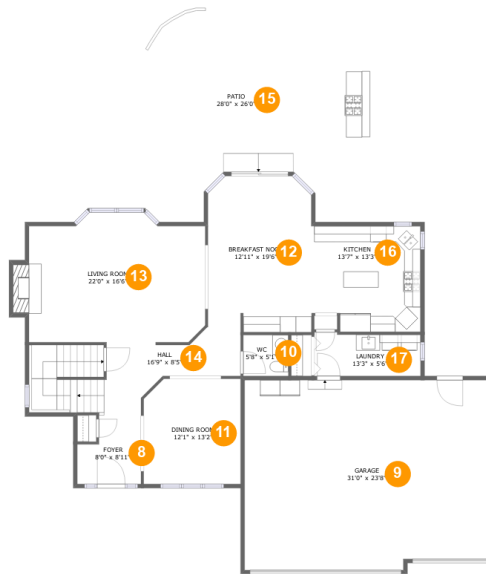
Room dimensions

Floor 1

Total sqft: 1398 Living area: 947

#		Dimensions	sqft	Counted as living area
1	Electrical Room	7'11" x 15'1"	84 sq. ft	No
2	Storage	20'5" x 8'7"	176 sq. ft	No
3	Wet Bar	12'11" x 7'6"	92 sq. ft	Yes
4	Recreation Room	25'5" x 18'9"	339 sq. ft	Yes
5	WC	6'4" x 5'8"	36 sq. ft	Yes
6	Recreation Room	14'6" x 25'0"	396 sq. ft	Yes
7	Storage	8'9" x 16'3"	130 sq. ft	No

**21025 Kenmare Drive, Shorewood, Will County,
Illinois, United States, 60404**



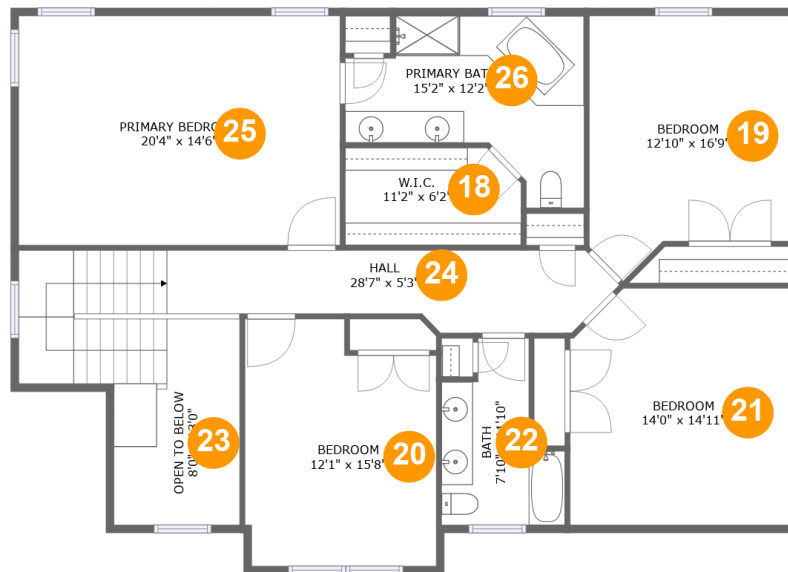
Room dimensions

Floor 2

Total sqft: 2790 Living area: 1397

#		Dimensions	sqft	Counted as living area
8	Foyer	8'0" x 8'11"	60 sq. ft	Yes
9	Garage	31'0" x 23'8"	721 sq. ft	No
10	WC	5'8" x 5'1"	29 sq. ft	Yes
11	Dining Room	12'1" x 13'2"	156 sq. ft	Yes
12	Breakfast Nook	12'11" x 19'6"	237 sq. ft	Yes
13	Living Room	22'0" x 16'6"	346 sq. ft	Yes
14	Hall	16'9" x 8'5"	186 sq. ft	Yes
15	Patio	28'0" x 26'0"	620 sq. ft	No
16	Kitchen	13'7" x 13'3"	172 sq. ft	Yes
17	Laundry	13'3" x 5'6"	70 sq. ft	Yes

**21025 Kenmare Drive, Shorewood, Will County,
Illinois, United States, 60404**



Room dimensions

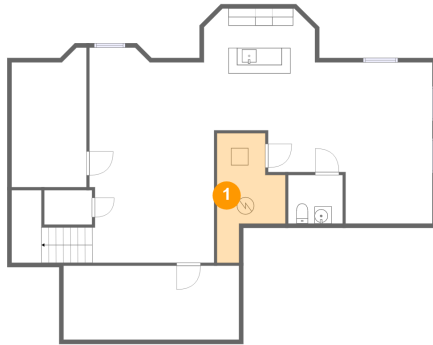
Floor 3

Total sqft: 1639 Living area: 1540

#		Dimensions	sqft	Counted as living area
18	W.I.C.	11'2" x 6'2"	66 sq. ft	Yes
19	Bedroom	12'10" x 16'9"	189 sq. ft	Yes
20	Bedroom	12'1" x 15'8"	175 sq. ft	Yes
21	Bedroom	14'0" x 14'11"	204 sq. ft	Yes
22	Bath	7'10" x 11'10"	70 sq. ft	Yes
23	Open To Below	8'0" x 13'0"	90 sq. ft	No
24	Hall	28'7" x 5'3"	203 sq. ft	Yes
25	Primary Bedroom	20'4" x 14'6"	295 sq. ft	Yes
26	Primary Bath	15'2" x 12'2"	131 sq. ft	Yes

**21025 Kenmare Drive, Shorewood, Will County,
Illinois, United States, 60404**

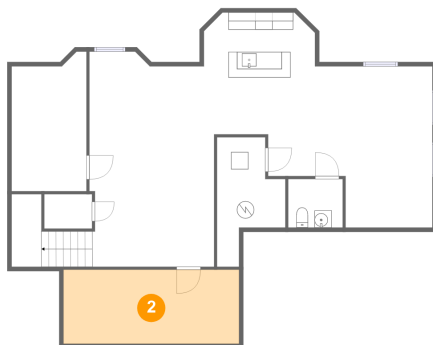
1 Floor 1 - Electrical Room



Dimensions: 7'11" x 15'1"
Area: 84 sq. ft
Counted as living area: No

Heated: No
Finished: No
Enclosed: Yes
Contiguous: Yes
Permitted: Yes
Wet space: No
Addition: No
Conversion: No

2 Floor 1 - Storage

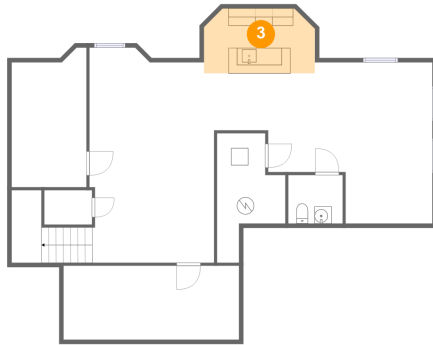


Dimensions: 20'5" x 8'7"
Area: 176 sq. ft
Counted as living area: No

Heated: No
Finished: No
Enclosed: No
Contiguous: Yes
Permitted: Yes
Wet space: No
Addition: No
Conversion: No

21025 Kenmare Drive, Shorewood, Will County,
Illinois, United States, 60404

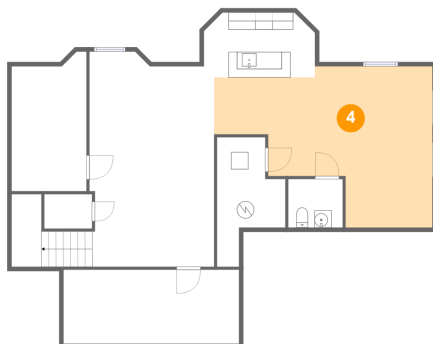
3 Floor 1 - Wet Bar



Dimensions: 12'11" x 7'6"
Area: 92 sq. ft
Counted as living area: Yes

Heated: Yes
Finished: Yes
Enclosed: Yes
Contiguous: Yes
Permitted: Yes
Wet space: No
Addition: No
Conversion: No

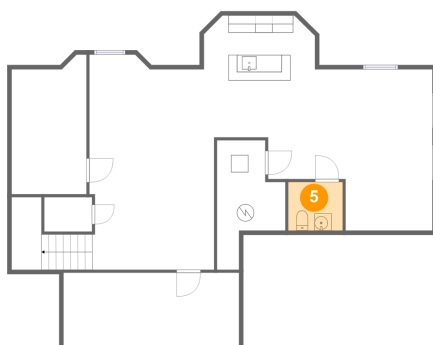
4 Floor 1 - Recreation Room



Dimensions: 25'5" x 18'9"
Area: 339 sq. ft
Counted as living area: Yes

Heated: Yes
Finished: Yes
Enclosed: Yes
Contiguous: Yes
Permitted: Yes
Wet space: No
Addition: No
Conversion: No

5 Floor 1 - WC

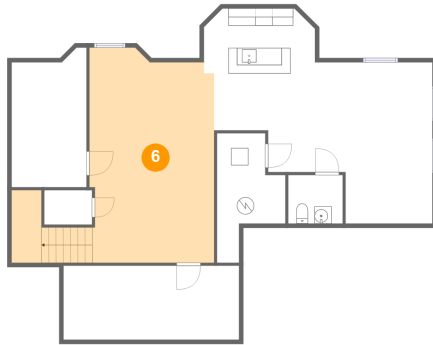


Dimensions: 6'4" x 5'8"
Area: 36 sq. ft
Counted as living area: Yes

Heated: Yes
Finished: Yes
Enclosed: Yes
Contiguous: Yes
Permitted: Yes
Wet space: Yes
Addition: No
Conversion: No

21025 Kenmare Drive, Shorewood, Will County,
Illinois, United States, 60404

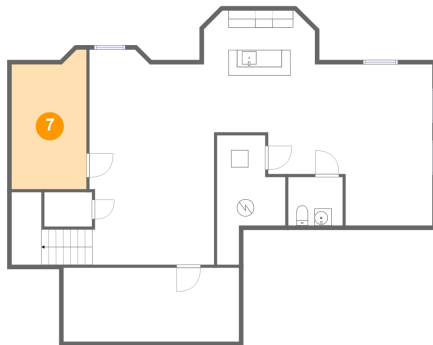
6 Floor 1 - Recreation Room



Dimensions: 14'6" x 25'0"
Area: 396 sq. ft
Counted as living area: Yes

Heated: Yes
Finished: Yes
Enclosed: Yes
Contiguous: Yes
Permitted: Yes
Wet space: No
Addition: No
Conversion: No

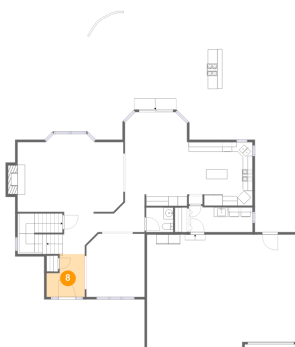
7 Floor 1 - Storage



Dimensions: 8'9" x 16'3"
Area: 130 sq. ft
Counted as living area: No

Heated: No
Finished: No
Enclosed: No
Contiguous: Yes
Permitted: Yes
Wet space: No
Addition: No
Conversion: No

8 Floor 2 - Foyer



Dimensions: 8'0" x 8'11"
Area: 60 sq. ft
Counted as living area: Yes

Heated: Yes
Finished: Yes
Enclosed: Yes
Contiguous: Yes
Permitted: Yes
Wet space: No
Addition: No
Conversion: No

21025 Kenmare Drive, Shorewood, Will County,
Illinois, United States, 60404

9 Floor 2 - Garage



Dimensions: 31'0" x 23'8"
Area: 721 sq. ft
Counted as living area: No

Heated: No
Finished: No
Enclosed: Yes
Contiguous: Yes
Permitted: Yes
Wet space: No
Addition: No
Conversion: No

10 Floor 2 - WC



Dimensions: 5'8" x 5'1"
Area: 29 sq. ft
Counted as living area: Yes

Heated: Yes
Finished: Yes
Enclosed: Yes
Contiguous: Yes
Permitted: Yes
Wet space: Yes
Addition: No
Conversion: No

11 Floor 2 - Dining Room



Dimensions: 12'1" x 13'2"
Area: 156 sq. ft
Counted as living area: Yes

Heated: Yes
Finished: Yes
Enclosed: Yes
Contiguous: Yes
Permitted: Yes
Wet space: No
Addition: No
Conversion: No

21025 Kenmare Drive, Shorewood, Will County,
Illinois, United States, 60404

12 Floor 2 - Breakfast Nook



Dimensions: 12'11" x 19'6"
Area: 237 sq. ft
Counted as living area: Yes

Heated: Yes
Finished: Yes
Enclosed: Yes
Contiguous: Yes
Permitted: Yes
Wet space: No
Addition: No
Conversion: No

13 Floor 2 - Living Room



Dimensions: 22'0" x 16'6"
Area: 346 sq. ft
Counted as living area: Yes

Heated: Yes
Finished: Yes
Enclosed: Yes
Contiguous: Yes
Permitted: Yes
Wet space: No
Addition: No
Conversion: No

14 Floor 2 - Hall



Dimensions: 16'9" x 8'5"
Area: 186 sq. ft
Counted as living area: Yes

Heated: Yes
Finished: Yes
Enclosed: Yes
Contiguous: Yes
Permitted: Yes
Wet space: No
Addition: No
Conversion: No

21025 Kenmare Drive, Shorewood, Will County,
Illinois, United States, 60404

15 Floor 2 - Patio



Dimensions: 28'0" x 26'0"
Area: 620 sq. ft
Counted as living area: No

Heated: No
Finished: Yes
Enclosed: No
Contiguous: Yes
Permitted: Yes
Wet space: No
Addition: No
Conversion: No

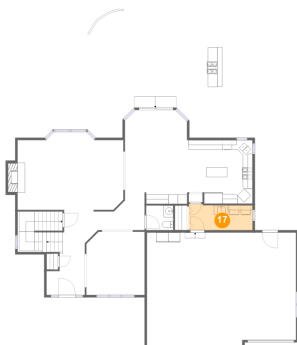
16 Floor 2 - Kitchen



Dimensions: 13'7" x 13'3"
Area: 172 sq. ft
Counted as living area: Yes

Heated: Yes
Finished: Yes
Enclosed: Yes
Contiguous: Yes
Permitted: Yes
Wet space: No
Addition: No
Conversion: No

17 Floor 2 - Laundry

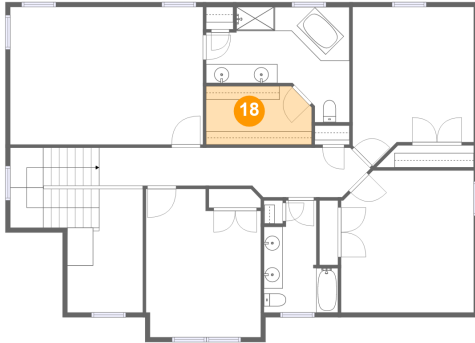


Dimensions: 13'3" x 5'6"
Area: 70 sq. ft
Counted as living area: Yes

Heated: Yes
Finished: Yes
Enclosed: Yes
Contiguous: Yes
Permitted: Yes
Wet space: No
Addition: No
Conversion: No

21025 Kenmare Drive, Shorewood, Will County,
Illinois, United States, 60404

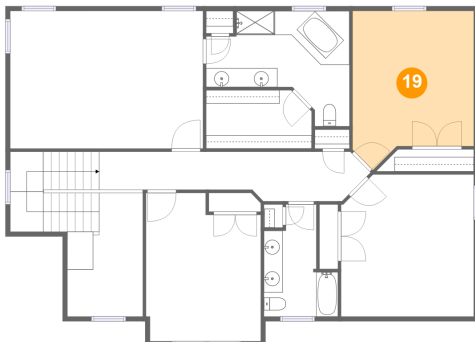
18 Floor 3 - W.I.C.



Dimensions: 11'2" x 6'2"
Area: 66 sq. ft
Counted as living area: Yes

Heated: Yes
Finished: Yes
Enclosed: Yes
Contiguous: Yes
Permitted: Yes
Wet space: No
Addition: No
Conversion: No

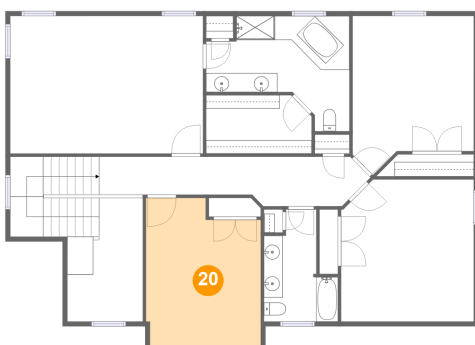
19 Floor 3 - Bedroom



Dimensions: 12'10" x 16'9"
Area: 189 sq. ft
Counted as living area: Yes

Heated: Yes
Finished: Yes
Enclosed: Yes
Contiguous: Yes
Permitted: Yes
Wet space: No
Addition: No
Conversion: No

20 Floor 3 - Bedroom

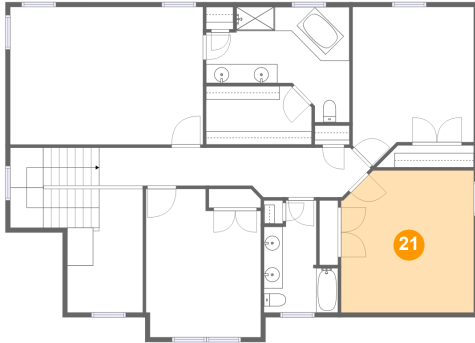


Dimensions: 12'1" x 15'8"
Area: 175 sq. ft
Counted as living area: Yes

Heated: Yes
Finished: Yes
Enclosed: Yes
Contiguous: Yes
Permitted: Yes
Wet space: No
Addition: No
Conversion: No

21025 Kenmare Drive, Shorewood, Will County,
Illinois, United States, 60404

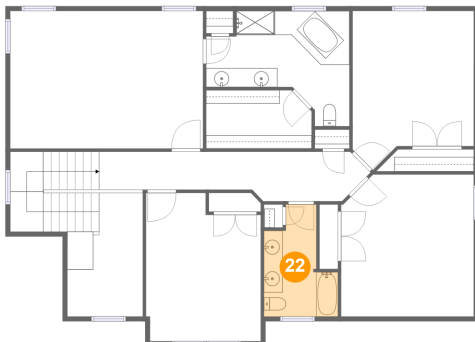
21 Floor 3 - Bedroom



Dimensions: 14'0" x 14'11"
Area: 204 sq. ft
Counted as living area: Yes

Heated: Yes
Finished: Yes
Enclosed: Yes
Contiguous: Yes
Permitted: Yes
Wet space: No
Addition: No
Conversion: No

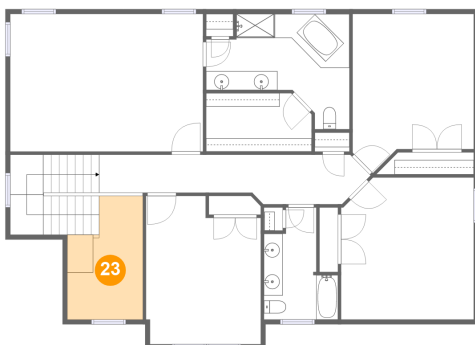
22 Floor 3 - Bath



Dimensions: 7'10" x 11'10"
Area: 70 sq. ft
Counted as living area: Yes

Heated: Yes
Finished: Yes
Enclosed: Yes
Contiguous: Yes
Permitted: Yes
Wet space: Yes
Addition: No
Conversion: No

23 Floor 3 - Open To Below

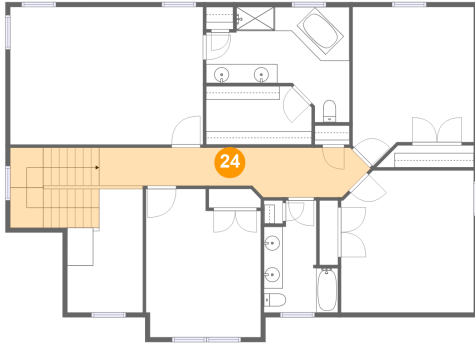


Dimensions: 8'0" x 13'0"
Area: 90 sq. ft
Counted as living area: No

Heated: No
Finished: No
Enclosed: No
Contiguous: Yes
Permitted: No
Wet space: No
Addition: No
Conversion: No

21025 Kenmare Drive, Shorewood, Will County,
Illinois, United States, 60404

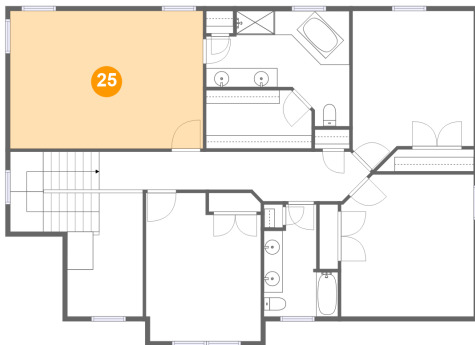
24 Floor 3 - Hall



Dimensions: 28'7" x 5'3"
Area: 203 sq. ft
Counted as living area: Yes

Heated: Yes
Finished: Yes
Enclosed: Yes
Contiguous: Yes
Permitted: Yes
Wet space: No
Addition: No
Conversion: No

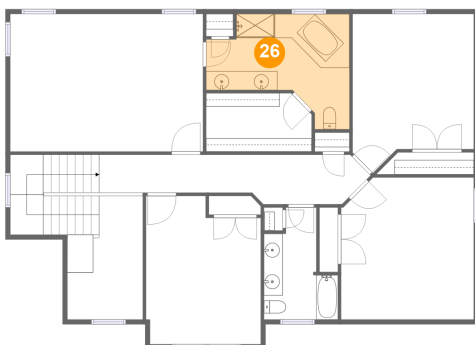
25 Floor 3 - Primary Bedroom



Dimensions: 20'4" x 14'6"
Area: 295 sq. ft
Counted as living area: Yes

Heated: Yes
Finished: Yes
Enclosed: Yes
Contiguous: Yes
Permitted: Yes
Wet space: No
Addition: No
Conversion: No

26 Floor 3 - Primary Bath



Dimensions: 15'2" x 12'2"
Area: 131 sq. ft
Counted as living area: Yes

Heated: Yes
Finished: Yes
Enclosed: Yes
Contiguous: Yes
Permitted: Yes
Wet space: Yes
Addition: No
Conversion: No