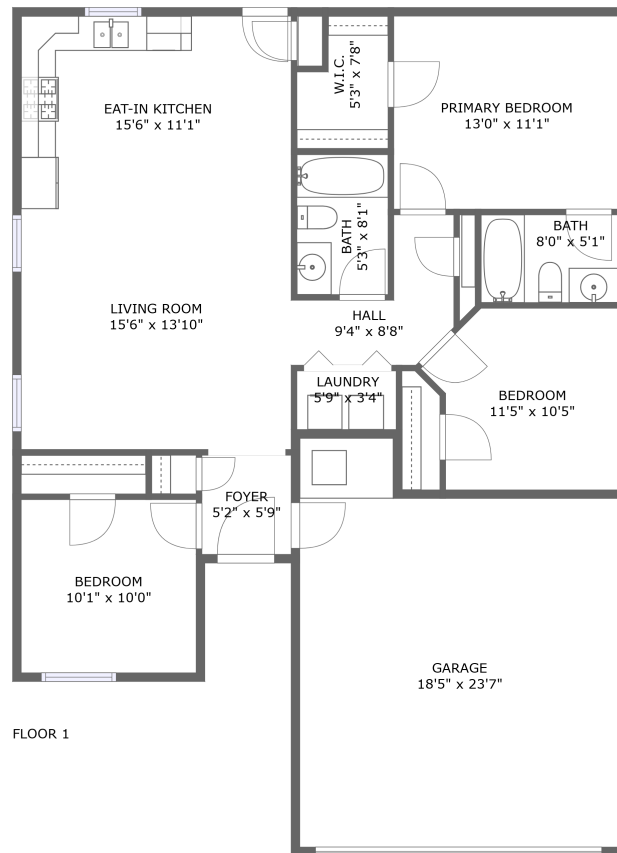



5269 Via del Cielo Ln, Santa Fe, NM, US



Property summary

 **1** Garages

 **3** Bedrooms

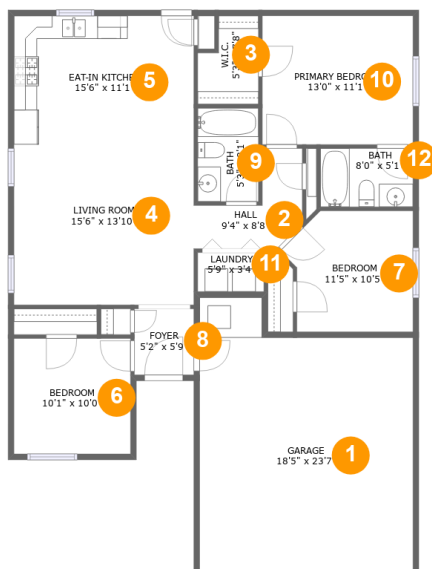
 **2** Bathrooms

 **0** Half baths

 **1** Floors

 **1,122**
Gross living
area sqft

 **1,539**
Total sqft

5269 Via del Cielo Ln, Santa Fe, NM, US**Room dimensions**

Floor 1

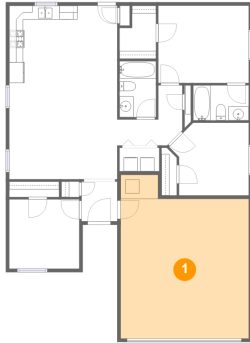
Total sqft: 1539 Living area: 1122

| # | | Dimensions | sqft | Counted as living area |
|----|-----------------|----------------|------------|------------------------|
| 1 | Garage | 18'5" x 23'7" | 389 sq. ft | No |
| 2 | Hall | 9'4" x 8'8" | 50 sq. ft | Yes |
| 3 | W.I.C. | 5'3" x 7'8" | 34 sq. ft | Yes |
| 4 | Living Room | 15'6" x 13'10" | 216 sq. ft | Yes |
| 5 | Eat-in Kitchen | 15'6" x 11'1" | 172 sq. ft | Yes |
| 6 | Bedroom | 10'1" x 10'0" | 100 sq. ft | Yes |
| 7 | Bedroom | 11'5" x 10'5" | 105 sq. ft | Yes |
| 8 | Foyer | 5'2" x 5'9" | 29 sq. ft | Yes |
| 9 | Bath | 5'3" x 8'1" | 42 sq. ft | Yes |
| 10 | Primary Bedroom | 13'0" x 11'1" | 145 sq. ft | Yes |
| 11 | Laundry | 5'9" x 3'4" | 19 sq. ft | Yes |

5269 Via del Cielo Ln, Santa Fe, NM, US

| # | | Dimensions | sqft | Counted as living area |
|----|------|-------------|-----------|------------------------|
| 12 | Bath | 8'0" x 5'1" | 40 sq. ft | Yes |

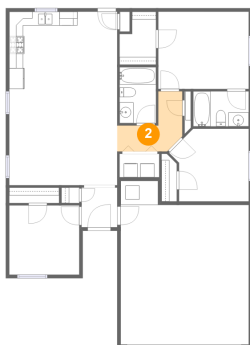
1 Floor 1 - Garage



Dimensions: 18'5" x 23'7"
Area: 389 sq. ft
Counted as living area: No

Heated: No
Finished: No
Enclosed: Yes
Contiguous: Yes
Permitted: Yes
Wet space: No
Addition: No
Conversion: No

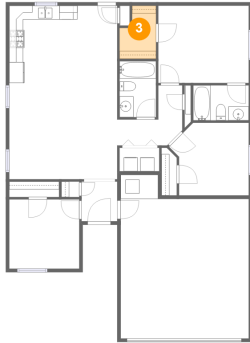
2 Floor 1 - Hall



Dimensions: 9'4" x 8'8"
Area: 50 sq. ft
Counted as living area: Yes

Heated: Yes
Finished: Yes
Enclosed: Yes
Contiguous: Yes
Permitted: Yes
Wet space: No
Addition: No
Conversion: No

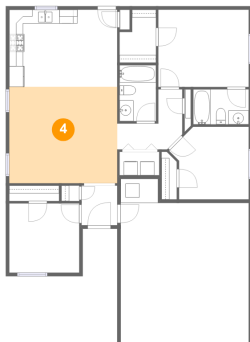
3 Floor 1 - W.I.C.



Dimensions: 5'3" x 7'8"
Area: 34 sq. ft
Counted as living area: Yes

Heated: Yes
Finished: Yes
Enclosed: Yes
Contiguous: Yes
Permitted: Yes
Wet space: No
Addition: No
Conversion: No

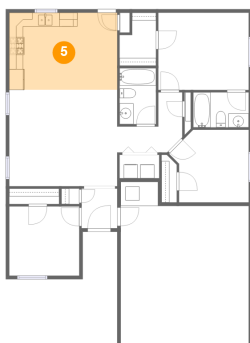
4 Floor 1 - Living Room



Dimensions: 15'6" x 13'10"
Area: 216 sq. ft
Counted as living area: Yes

Heated: Yes
Finished: Yes
Enclosed: Yes
Contiguous: Yes
Permitted: Yes
Wet space: No
Addition: No
Conversion: No

5 Floor 1 - Eat-in Kitchen

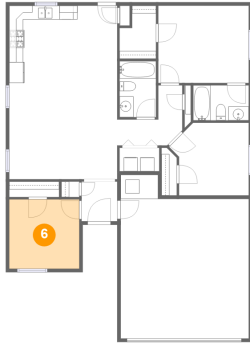


Dimensions: 15'6" x 11'1"
Area: 172 sq. ft
Counted as living area: Yes

Heated: Yes
Finished: Yes
Enclosed: Yes
Contiguous: Yes
Permitted: Yes
Wet space: No
Addition: No
Conversion: No

5269 Via del Cielo Ln, Santa Fe, NM, US

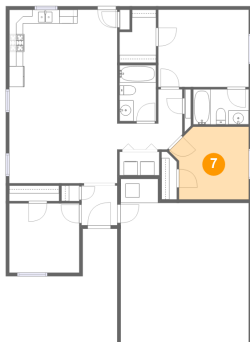
6 Floor 1 - Bedroom



Dimensions: 10'1" x 10'0"
Area: 100 sq. ft
Counted as living area: Yes

Heated: Yes
Finished: Yes
Enclosed: Yes
Contiguous: Yes
Permitted: Yes
Wet space: No
Addition: No
Conversion: No

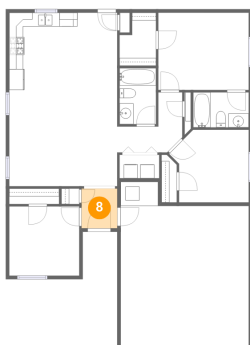
7 Floor 1 - Bedroom



Dimensions: 11'5" x 10'5"
Area: 105 sq. ft
Counted as living area: Yes

Heated: Yes
Finished: Yes
Enclosed: Yes
Contiguous: Yes
Permitted: Yes
Wet space: No
Addition: No
Conversion: No

8 Floor 1 - Foyer

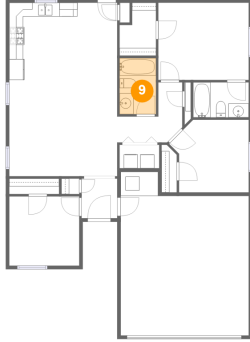


Dimensions: 5'2" x 5'9"
Area: 29 sq. ft
Counted as living area: Yes

Heated: Yes
Finished: Yes
Enclosed: Yes
Contiguous: Yes
Permitted: Yes
Wet space: No
Addition: No
Conversion: No

5269 Via del Cielo Ln, Santa Fe, NM, US

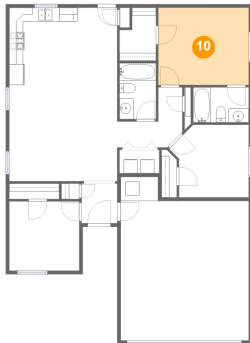
9 Floor 1 - Bath



Dimensions: 5'3" x 8'1"
Area: 42 sq. ft
Counted as living area: Yes

Heated: Yes
Finished: Yes
Enclosed: Yes
Contiguous: Yes
Permitted: Yes
Wet space: Yes
Addition: No
Conversion: No

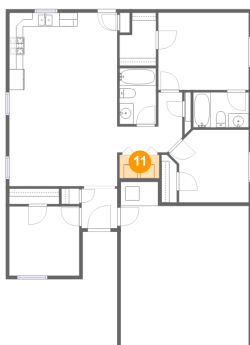
10 Floor 1 - Primary Bedroom



Dimensions: 13'0" x 11'1"
Area: 145 sq. ft
Counted as living area: Yes

Heated: Yes
Finished: Yes
Enclosed: Yes
Contiguous: Yes
Permitted: Yes
Wet space: No
Addition: No
Conversion: No

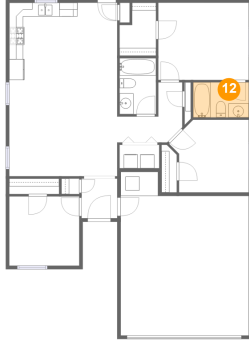
11 Floor 1 - Laundry



Dimensions: 5'9" x 3'4"
Area: 19 sq. ft
Counted as living area: Yes

Heated: Yes
Finished: Yes
Enclosed: Yes
Contiguous: Yes
Permitted: Yes
Wet space: No
Addition: No
Conversion: No

12 Floor 1 - Bath



Dimensions: 8'0" x 5'1"
Area: 40 sq. ft
Counted as living area: Yes

Heated: Yes
Finished: Yes
Enclosed: Yes
Contiguous: Yes
Permitted: Yes
Wet space: Yes
Addition: No
Conversion: No