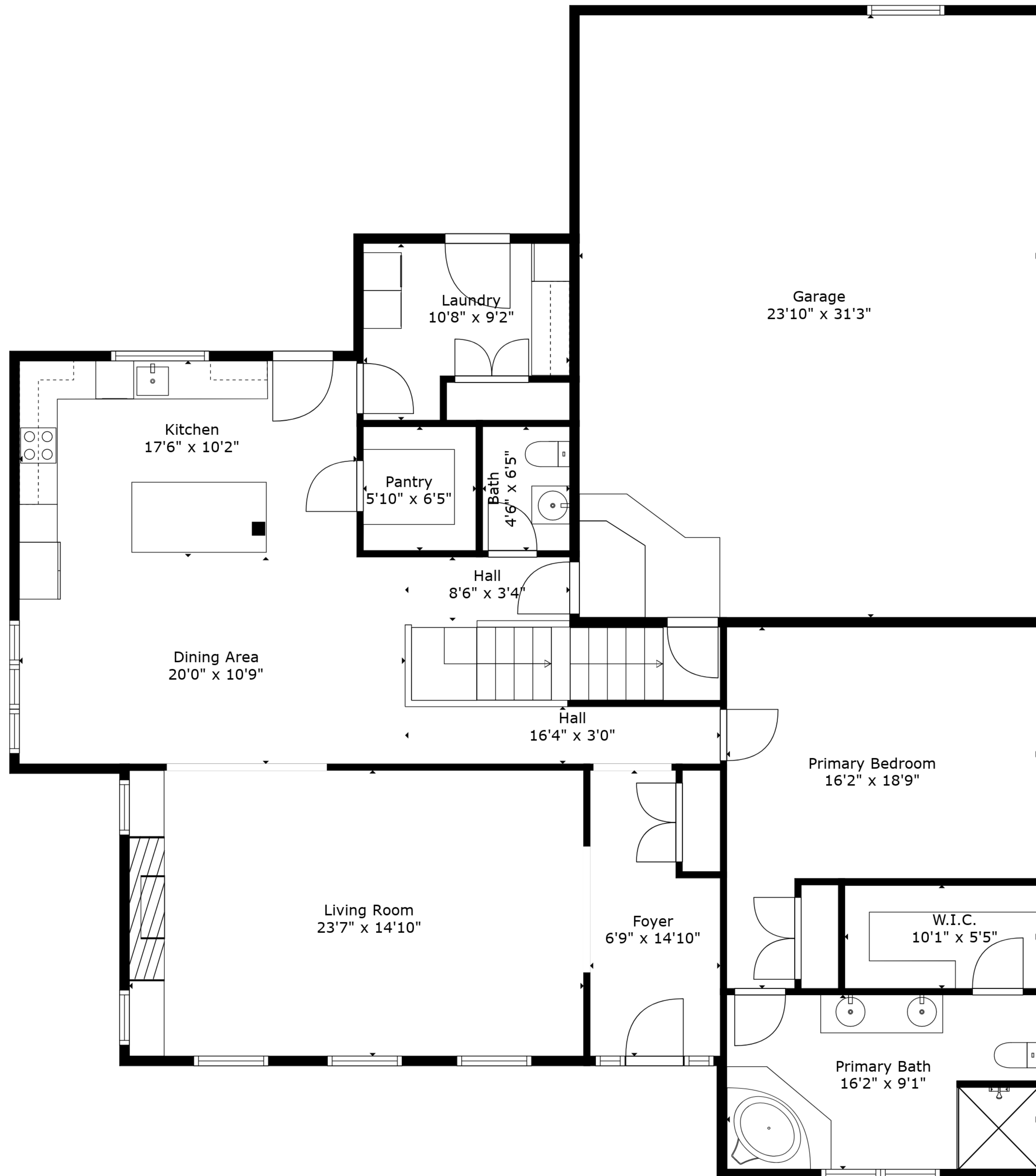


Basement
52'4" x 41'7"

TOTAL: 2788 sq. ft

BELOW GROUND: 0 sq. ft, FLOOR 2: 1634 sq. ft, FLOOR 3: 1154 sq. ft
EXCLUDED AREAS: BASEMENT: 1593 sq. ft, GARAGE: 746 sq. ft, LOW CEILING: 391 sq. ft,
ATTIC: 203 sq. ft, WALLS: 350 sq. ft

Measurements Deemed Highly Reliable But Not Guaranteed. Measured By Cubicasa Tech.

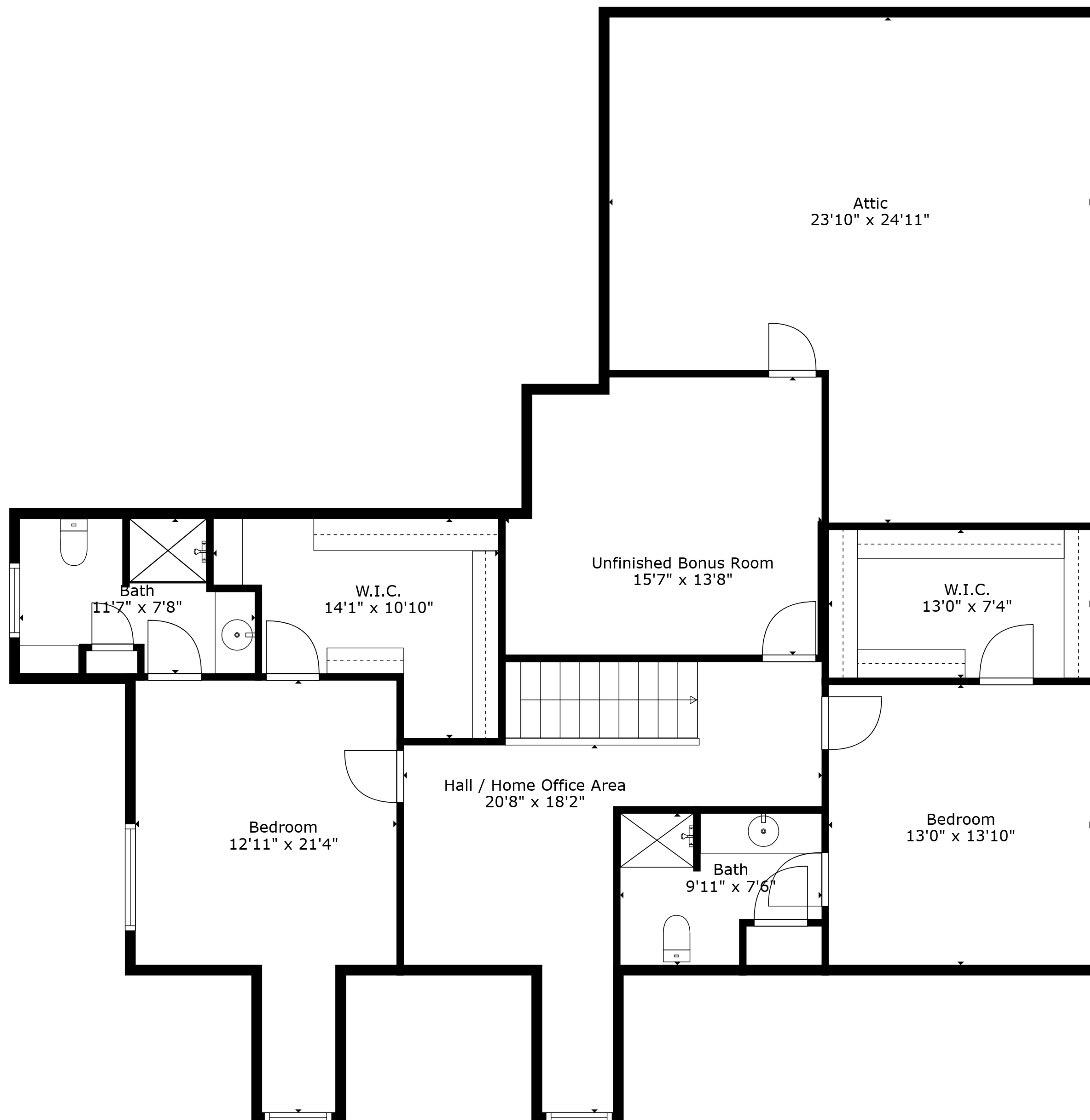


TOTAL: 2788 sq. ft

BELOW GROUND: 0 sq. ft, FLOOR 2: 1634 sq. ft, FLOOR 3: 1154 sq. ft

EXCLUDED AREAS: BASEMENT: 1593 sq. ft, GARAGE: 746 sq. ft, LOW CEILING: 391 sq. ft,
ATTIC: 203 sq. ft, WALLS: 350 sq. ft

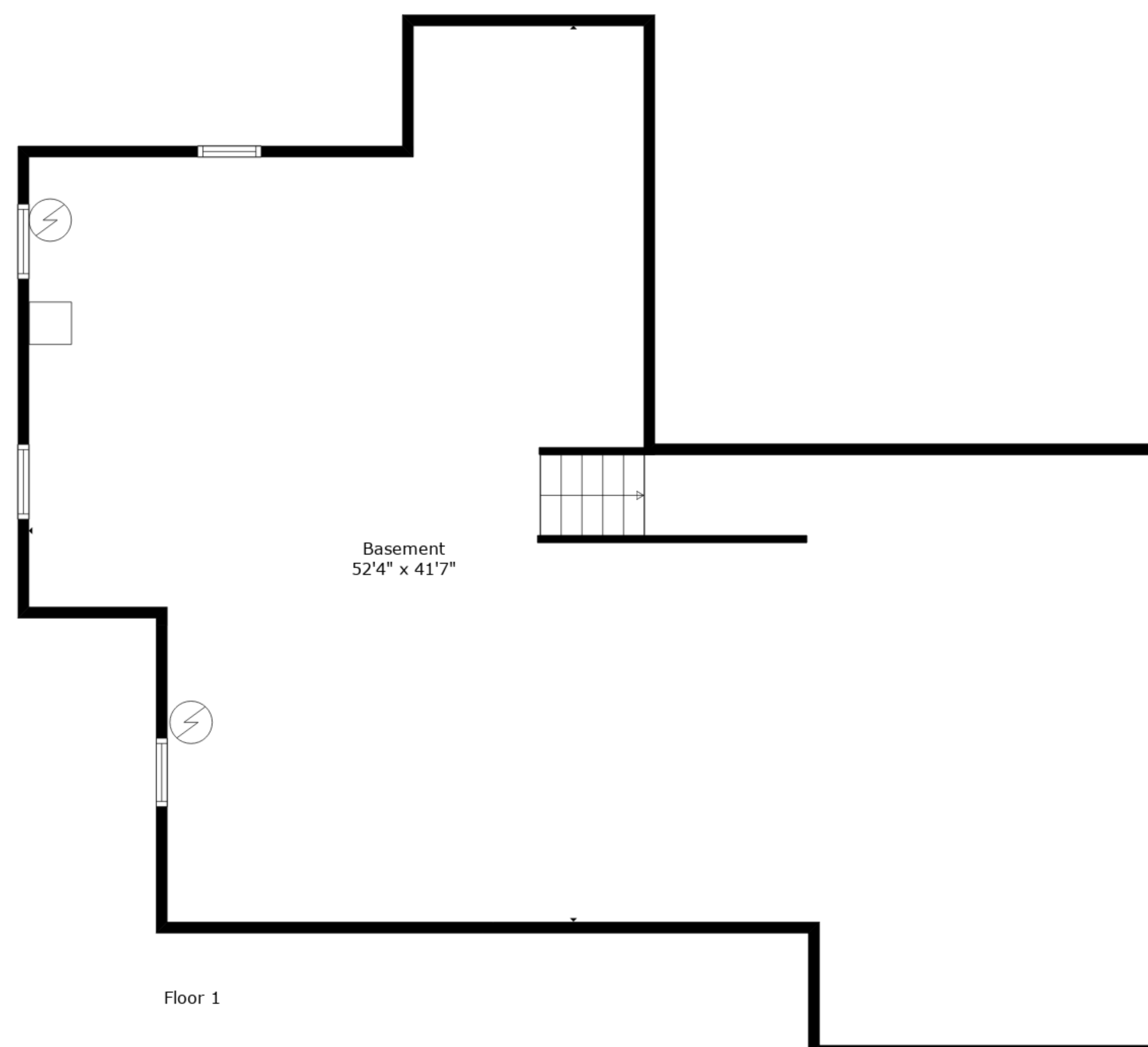
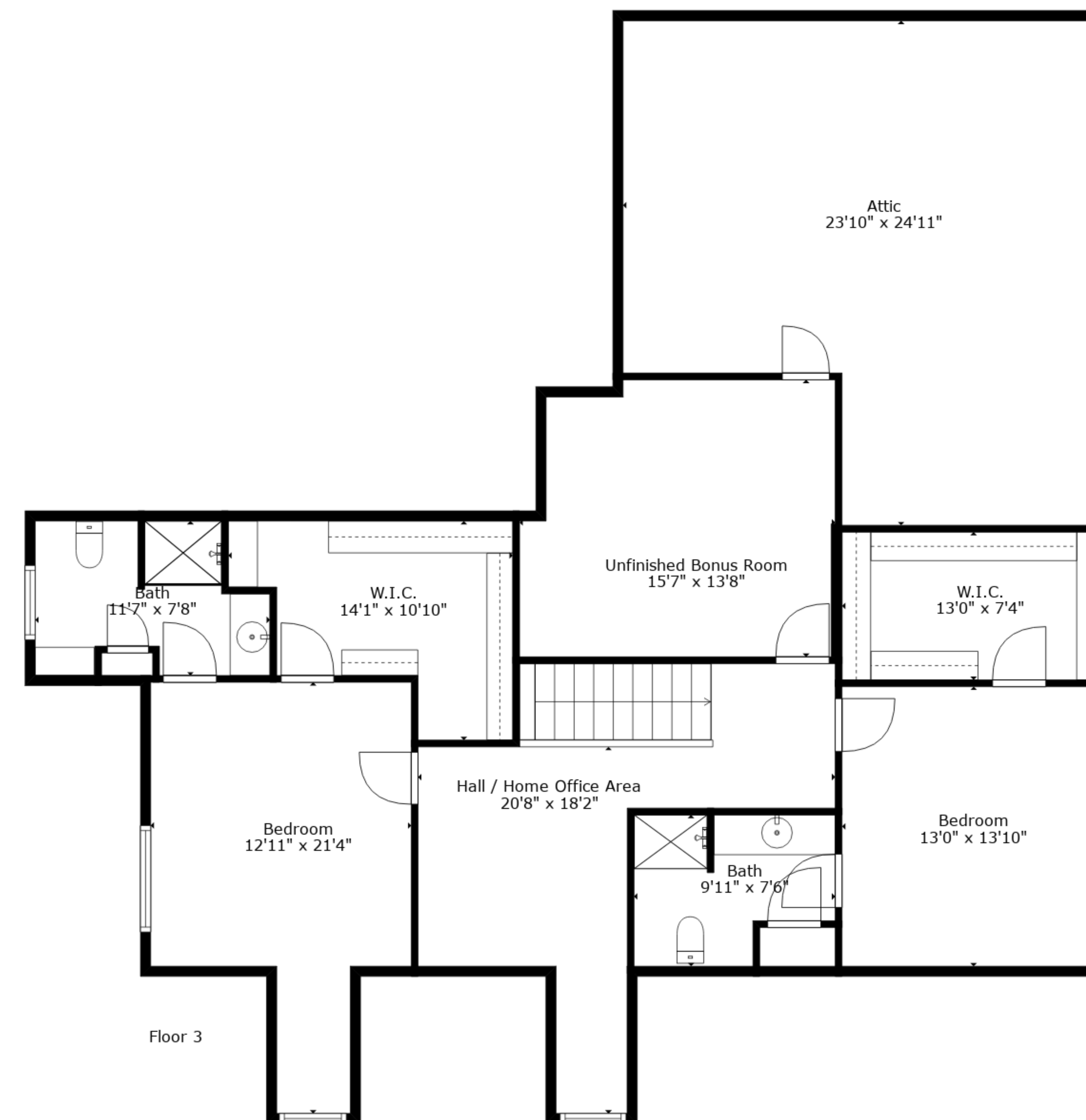
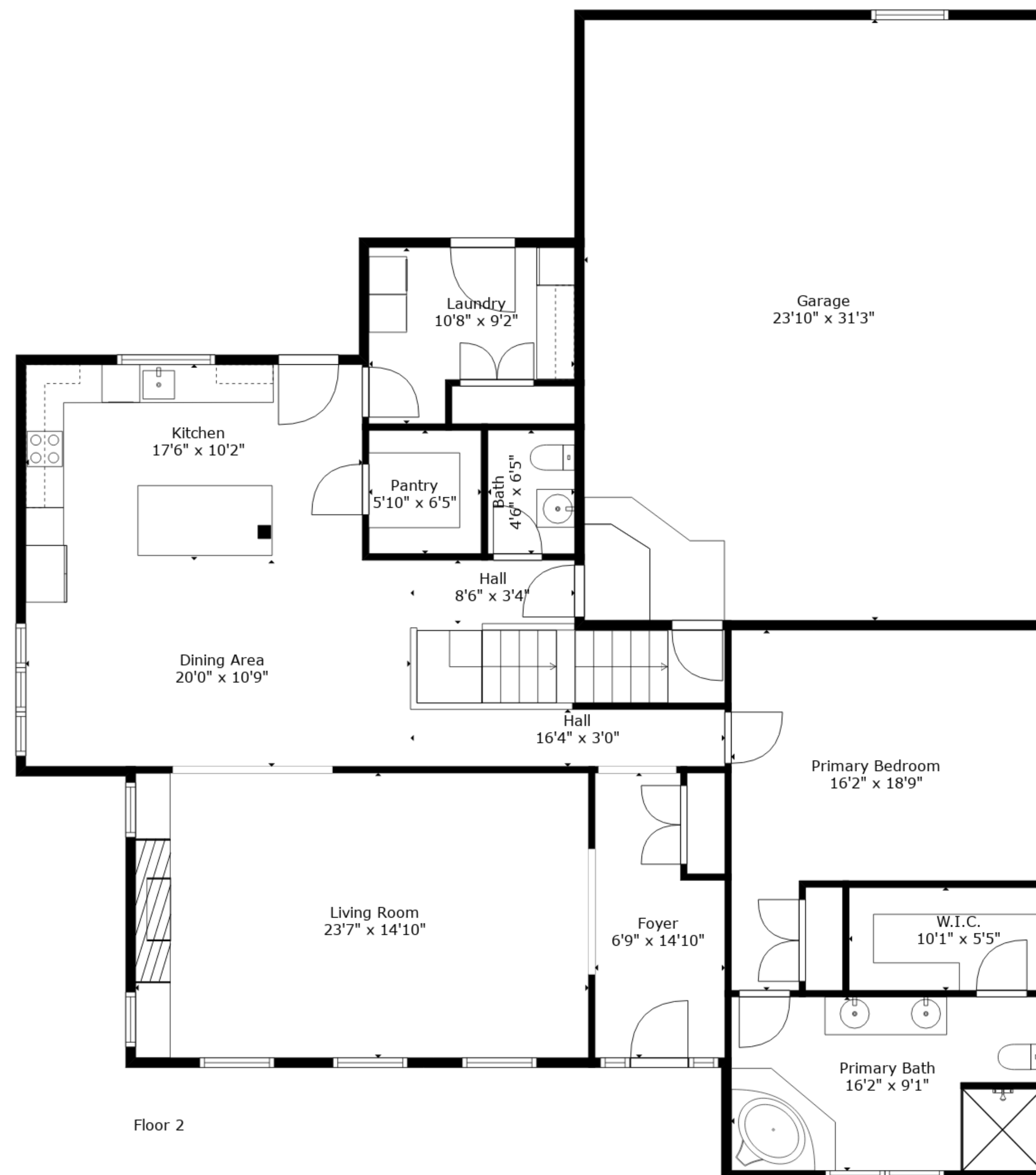
Measurements Deemed Highly Reliable But Not Guaranteed. Measured By Cubicasa Tech.



TOTAL: 2788 sq. ft

BELOW GROUND: 0 sq. ft, FLOOR 2: 1634 sq. ft, FLOOR 3: 1154 sq. ft
EXCLUDED AREAS: BASEMENT: 1593 sq. ft, GARAGE: 746 sq. ft, LOW CEILING: 391 sq. ft,
ATTIC: 203 sq. ft, WALLS: 350 sq. ft

Measurements Deemed Highly Reliable But Not Guaranteed. Measured By Cubicasa Tech.



TOTAL: 2788 sq. ft

BELOW GROUND: 0 sq. ft, FLOOR 2: 1634 sq. ft, FLOOR 3: 1154 sq. ft
 EXCLUDED AREAS: BASEMENT: 1593 sq. ft, GARAGE: 746 sq. ft, LOW CEILING: 391 sq. ft,
 ATTIC: 203 sq. ft, WALLS: 350 sq. ft

Measurements Deemed Highly Reliable But Not Guaranteed. Measured By Cubicasa Tech.