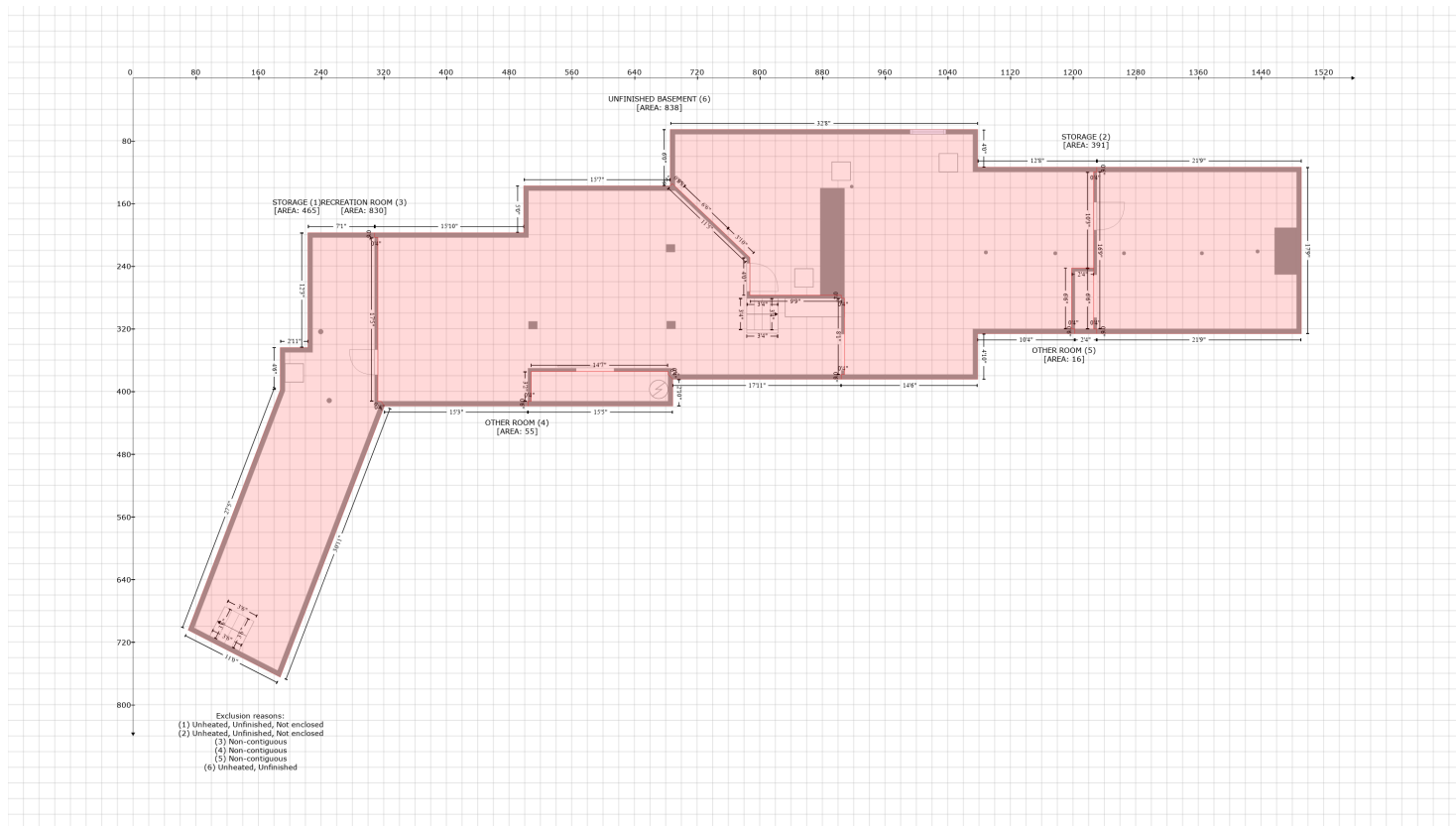


26 Laurel Drive, Bedford, Hillsborough County, New Hampshire, United States, 03110

Gross Living Area: 4156 sq. ft



Space	Area (sq. ft)	Calculation
STORAGE (Non-living area)	465	Coordinate Polygon Area Algorithm using inches $-((308.4 + 308.4) * (197.6 - 203.6) + (308.4 + 312.4) * (203.6 - 203.6) + (312.4 + 312.4) * (203.6 - 412.7) + (312.4 + 316.7) * (412.7 - 412.7) + (316.7 + 320.8) * (412.7 - 418.8) + (320.8 + 187.8) * (418.8 - 765) + (187.8 + 70.3) * (765 - 704.8) + (70.3 + 187.9) * (704.8 - 398.1) + (187.9 + 187.9) * (398.1 - 344.2) + (187.9 + 223.2) * (344.2 - 344.2) + (223.2 + 223.2) * (344.2 - 197.6) + (223.2 + 308.4) * (197.6 - 197.6)) * 0.5 * 0.00694$
STORAGE (Non-living area)	391	$-((1491.5 + 1491.5) * (113.8 - 326.4) + (1491.5 + 1230.4) * (326.4 - 326.4) + (1230.4 + 1230.4) * (326.4 - 320.4) + (1230.4 + 1226.4) * (320.4 - 320.4) + (1226.4 + 1226.4) * (320.4 - 119.8) + (1226.4 + 1230.4) * (119.8 - 119.8) + (1230.4 + 1230.4) * (119.8 - 113.8) + (1230.4 + 1491.5) * (113.8 - 113.8)) * 0.5 * 0.00694$
RECREATION ROOM (Non-living area)	830	$-((688.6 + 787.4) * (134.9 - 229.2) + (787.4 + 787.4) * (229.2 - 277.3) + (787.4 + 904.2) * (277.3 - 277.3) + (904.2 + 904.2) * (277.3 - 281.3) + (904.2 + 908.2) * (281.3 - 281.3) + (908.2 + 908.2) * (281.3 - 378.5) + (908.2 + 904.2) * (378.5 - 378.5) + (904.2 + 904.2) * (378.5 - 384.5) + (904.2 + 689.1) * (384.5 - 384.5) + (689.1 + 683.1) * (384.5 - 378.5) + (683.1 + 683.1) * (378.5 - 374.6) + (683.1 + 508.3) * (374.6 - 374.6) + (508.3 + 508.3) * (374.6 - 412.7) + (508.3 + 504.3) * (412.7 - 412.7) + (504.3 + 504.3) * (412.7 - 418.7) + (504.3 + 320.8) * (418.7 - 418.7) + (320.8 + 316.7) * (418.7 - 412.7) + (316.7 + 312.4) * (412.7 - 412.7) + (312.4 + 312.4) * (412.7 - 203.6) + (312.4 + 308.4) * (203.6 - 203.6) + (308.4 + 308.4) * (203.6 - 197.6) + (308.4 + 498.8) * (197.6 - 197.6) + (498.8 + 498.8) * (197.6 - 137.7) + (498.8 + 685.8) * (137.7 - 137.7) + (685.8 + 688.6) * (137.7 - 134.9)) * 0.5 * 0.00694$
OTHER ROOM (Non-living area)	55	$-((683.1 + 683.1) * (374.6 - 378.5) + (683.1 + 689.1) * (378.5 - 384.5) + (689.1 + 689.1) * (384.5 - 418.7) + (689.1 + 504.3) * (418.7 - 418.7) + (504.3 + 504.3) * (418.7 - 412.7) + (504.3 + 508.3) * (412.7 - 412.7) + (508.3 + 508.3) * (412.7 - 374.6) + (508.3 + 683.1) * (374.6 - 374.6)) * 0.5 * 0.00694$
OTHER ROOM (Non-living area)	16	$-((1226.4 + 1226.4) * (242.7 - 320.4) + (1226.4 + 1230.4) * (320.4 - 320.4) + (1230.4 + 1230.4) * (320.4 - 326.4) + (1230.4 + 1202.4) * (326.4 - 326.4) + (1202.4 + 1202.4) * (326.4 - 320.4) +$

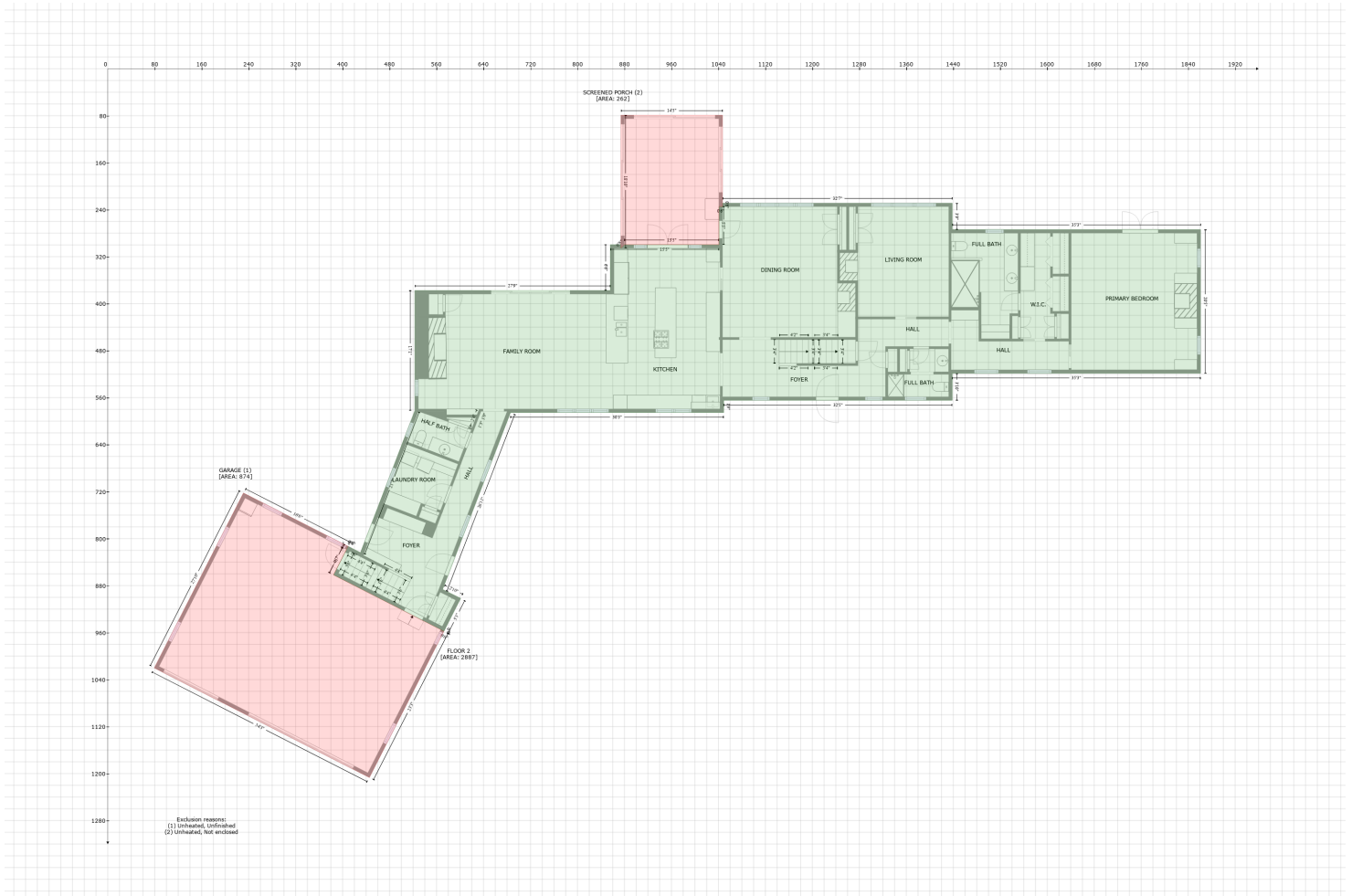
26 Laurel Drive, Bedford, Hillsborough County, New Hampshire, United States, 03110

Gross Living Area: 4156 sq. ft

Space	Area (sq. ft)	Calculation <small>Coordinate Polygon Area Algorithm using inches</small>
UNFINISHED BASEMENT (Non-living area)	838	$\begin{aligned} & (1202.4 + 1198.4) * (320.4 - 320.4) + (1198.4 + 1198.4) * (320.4 - 242.7) + (1198.4 + 1226.4) * \\ & (242.7 - 242.7) * 0.5 * 0.00694 \\ & -((1078.3 + 1078.3) * (65.7 - 113.8) + (1078.3 + 1230.4) * (113.8 - 113.8) + (1230.4 + 1230.4) * \\ & (113.8 - 119.8) + (1230.4 + 1226.4) * (119.8 - 119.8) + (1226.4 + 1226.4) * (119.8 - 242.7) + \\ & (1226.4 + 1198.4) * (242.7 - 242.7) + (1198.4 + 1198.4) * (242.7 - 320.4) + (1198.4 + 1202.4) * \\ & (320.4 - 320.4) + (1202.4 + 1202.4) * (320.4 - 326.4) + (1202.4 + 1078.3) * (326.4 - 326.4) + \\ & (1078.3 + 1078.3) * (326.4 - 384.5) + (1078.3 + 904.2) * (384.5 - 384.5) + (904.2 + 904.2) * \\ & (384.5 - 378.5) + (904.2 + 908.2) * (378.5 - 378.5) + (908.2 + 908.2) * (378.5 - 281.3) + (908.2 + \\ & 904.2) * (281.3 - 281.3) + (904.2 + 904.2) * (281.3 - 277.3) + (904.2 + 787.4) * (277.3 - 277.3) + \\ & (787.4 + 787.4) * (277.3 - 229.2) + (787.4 + 754.4) * (229.2 - 197.6) + (754.4 + 698.1) * (197.6 - \\ & 143.7) + (698.1 + 691.8) * (143.7 - 138) + (691.8 + 688.6) * (138 - 134.9) + (688.6 + 685.8) * \\ & (134.9 - 137.7) + (685.8 + 685.8) * (137.7 - 65.7) + (685.8 + 1078.3) * (65.7 - 65.7) * 0.5 * \\ & 0.00694 \end{aligned}$

26 Laurel Drive, Bedford, Hillsborough County, New Hampshire, United States, 03110

Gross Living Area: 4156 sq. ft



Space	Area (sq. ft)	Calculation
FLOOR 2 (Living area)	2887	Coordinate Polygon Area Algorithm using inches $-((567.1 + 572.5) * (955.1 - 957.7) + (572.5 + 572.5) * (957.7 - 957.8) + (572.5 + 567.1) * (957.8 - 955.1)) * 0.5 * 0.00694 + -((1438.3 + 1438.3) * (228.7 - 273.8) + (1438.3 + 1861.4) * (273.8 - 273.8) + (1861.4 + 1861.4) * (273.8 - 518.6) + (1861.4 + 1438.3) * (518.6 - 518.6) + (1438.3 + 1438.3) * (518.6 - 564.5) + (1438.3 + 1049.1) * (564.5 - 564.5) + (1049.1 + 1049.1) * (564.5 - 585.4) + (1049.1 + 685.9) * (585.4 - 585.4) + (685.9 + 570.2) * (585.4 - 886.5) + (570.2 + 601.1) * (886.5 - 901.7) + (601.1 + 572.5) * (901.7 - 957.7) + (572.5 + 432.9) * (957.7 - 886.5) + (432.9 + 384.5) * (886.5 - 861.8) + (384.5 + 406.7) * (861.8 - 818.5) + (406.7 + 408.1) * (818.5 - 815.9) + (408.1 + 409.3) * (815.9 - 813.2) + (409.3 + 414.8) * (813.2 - 815.9) + (414.8 + 414.6) * (815.9 - 815.9) + (414.6 + 430.4) * (815.9 - 823.8) + (430.4 + 523) * (823.8 - 582.1) + (523 + 523) * (582.1 - 377.6) + (523 + 855.9) * (377.6 - 377.6) + (855.9 + 855.9) * (377.6 - 299.6) + (855.9 + 874) * (299.6 - 299.6) + (874 + 874) * (299.6 - 305.6) + (874 + 880) * (305.6 - 299.6) + (880 + 1041) * (299.6 - 299.6) + (1041 + 1041) * (299.6 - 234.7) + (1041 + 1047) * (234.7 - 234.7) + (1047 + 1047) * (234.7 - 228.7) + (1047 + 1438.3) * (228.7 - 228.7)) * 0.5 * 0.00694 + -((635.6 + 624.9) * (583.4 - 610.9) + (624.9 + 631.2) * (610.9 - 594.9) + (631.2 + 635.6) * (594.9 - 583.4)) * 0.5 * 0.00694$
GARAGE (Non-living area)	874	$-((231.1 + 409.4) * (722.3 - 813.2) + (409.4 + 406.7) * (813.2 - 818.5) + (406.7 + 384.5) * (818.5 - 861.8) + (384.5 + 567.1) * (861.8 - 955.1) + (567.1 + 572.5) * (955.1 - 957.8) + (572.5 + 445.6) * (957.8 - 1206.8) + (445.6 + 79.3) * (1206.8 - 1020.2) + (79.3 + 231.1) * (1020.2 - 722.3)) * 0.5 * 0.00694$
SCREENED PORCH	262	$-((1047 + 1047) * (79.1 - 234.7) + (1047 + 1041) * (234.7 - 234.7) + (1041 + 1041) * (234.7 -$

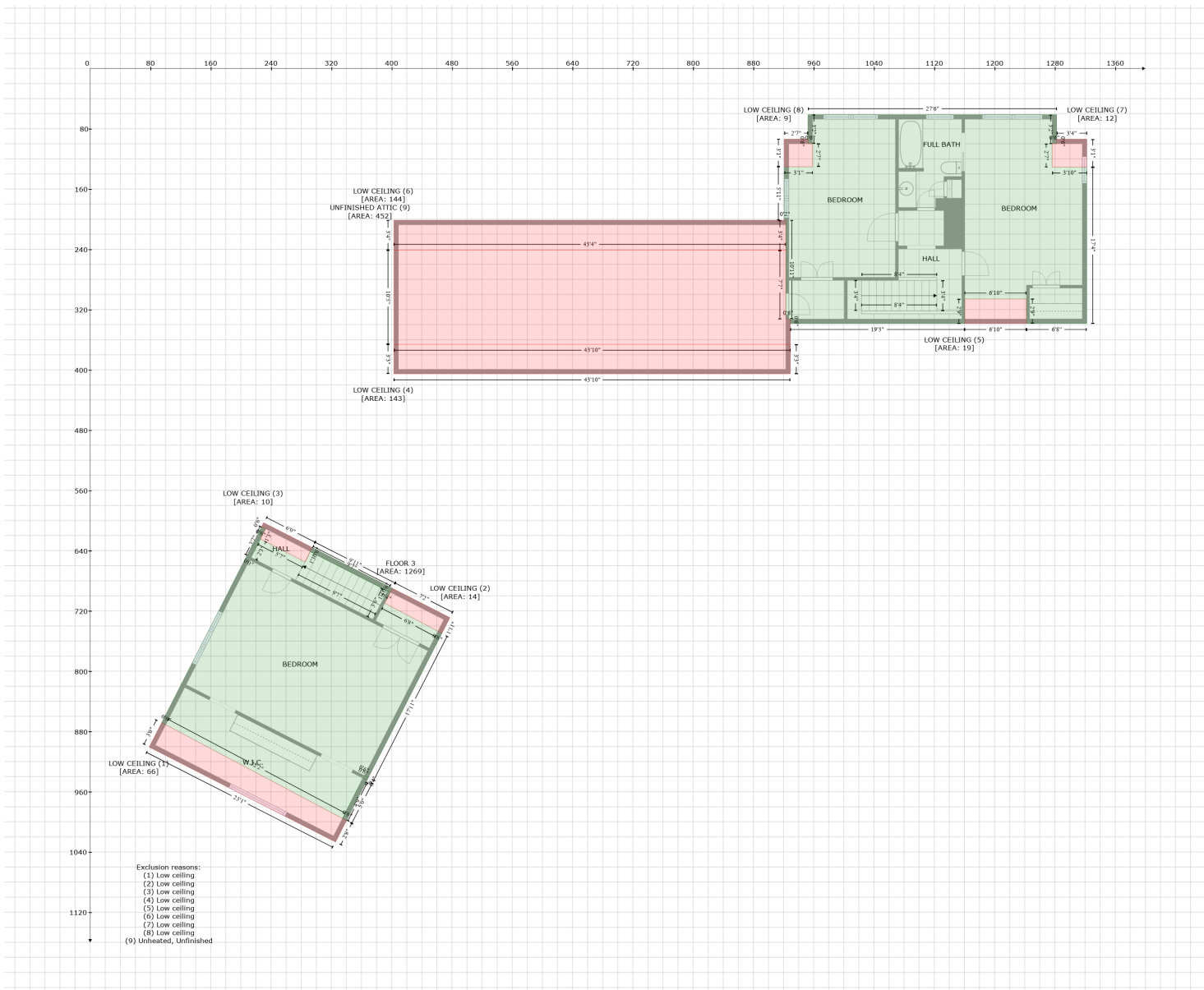
26 Laurel Drive, Bedford, Hillsborough County, New Hampshire, United States, 03110

Gross Living Area: 4156 sq. ft

Space	Area (sq. ft)	Calculation <small>Coordinate Polygon Area Algorithm using inches</small>
(Non-living area)		$299.6 + (1041 + 880) * (299.6 - 299.6) + (880 + 874) * (299.6 - 305.6) + (874 + 874) * (305.6 - 79.1) + (874 + 1047) * (79.1 - 79.1) * 0.5 * 0.00694$

26 Laurel Drive, Bedford, Hillsborough County, New Hampshire, United States, 03110

Gross Living Area: 4156 sq. ft



Space	Area (sq. ft)	Calculation
FLOOR 3 (Living area)	1269	Coordinate Polygon Area Algorithm using inches $-((227.3 + 232.8) * (608.5 - 610.9) + (232.8 + 232.8) * (610.9 - 611) + (232.8 + 213.4) * (611 - 649) + (213.4 + 213.6) * (649 - 649.1) + (213.6 + 226.1) * (649.1 - 624.6) + (226.1 + 285.4) * (624.6 - 655.1) + (285.4 + 291.9) * (655.1 - 641.2) + (291.9 + 394.6) * (641.2 - 693.5) + (394.6 + 398.2) * (693.5 - 695.4) + (398.2 + 390.7) * (695.4 - 709.7) + (390.7 + 461.4) * (709.7 - 747) + (461.4 + 466.8) * (747 - 749.7) + (466.8 + 369.3) * (749.7 - 941.1) + (369.3 + 369.1) * (941.1 - 941.2) + (369.1 + 363.8) * (941.2 - 938.6) + (363.8 + 369.2) * (938.6 - 941.3) + (369.2 + 367.5) * (941.3 - 944.7) + (367.5 + 362.1) * (944.7 - 942) + (362.1 + 367.4) * (942 - 944.7) + (367.4 + 340.2) * (944.7 - 998.2) + (340.2 + 334.8) * (998.2 - 995.5) + (334.8 + 360.4) * (995.5 - 944.7) + (360.4 + 334.8) * (944.7 - 995.5) + (334.8 + 100.2) * (995.5 - 871.1) + (100.2 + 94.9) * (871.1 - 868.4) + (94.9 + 227.3) * (868.4 - 608.5) * 0.5 * 0.00694 + -((294.6 + 401) * (635.8 - 690) + (401 + 398.3) * (690 - 695.4) + (398.3 + 291.9) * (695.4 - 641.2) + (291.9 + 294.6) * (641.2 - 635.8)) * 0.5 * 0.00694 + -((1282.4 + 1282.4) * (61.3 - 99.8) + (1282.4 + 1276.4) * (99.8 - 99.8) + (1276.4 +$

26 Laurel Drive, Bedford, Hillsborough County, New Hampshire, United States, 03110

Gross Living Area: 4156 sq. ft

Space	Area (sq. ft)	Calculation <small>Coordinate Polygon Area Algorithm using inches</small>
		$1276.4 * (99.8 - 130.8) + (1276.4 + 1322.4) * (130.8 - 130.8) + (1322.4 + 1322.4) * (130.8 - 338.6) + (1322.4 + 1242.3) * (338.6 - 338.6) + (1242.3 + 1242.3) * (338.6 - 305.9) + (1242.3 + 1160.5) * (305.9 - 305.9) + (1160.5 + 1160.5) * (305.9 - 338.6) + (1160.5 + 929.1) * (338.6 - 338.6) + (929.1 + 929.1) * (338.6 - 332.6) + (929.1 + 923.1) * (332.6 - 332.6) + (923.1 + 923.1) * (332.6 - 201.5) + (923.1 + 921) * (201.5 - 201.5) + (921 + 921) * (201.5 - 130.5) + (921 + 958.4) * (130.5 - 130.5) + (958.4 + 958.4) * (130.5 - 99.8) + (958.4 + 952.4) * (99.8 - 99.8) + (952.4 + 952.4) * (99.8 - 61.3) + (952.4 + 1282.4) * (61.3 - 61.3) * 0.5 * 0.00694$
LOW CEILING (Non-living area)	66	$-(94.9 + 100.2) * (868.4 - 871.1) + (100.2 + 334.8) * (871.1 - 995.5) + (334.8 + 340.2) * (995.5 - 998.2) + (340.2 + 325.6) * (998.2 - 1026.8) + (325.6 + 78.4) * (1026.8 - 900.9) + (78.4 + 94.9) * (900.9 - 868.4) * 0.5 * 0.00694$
LOW CEILING (Non-living area)	14	$-((401 + 477.4) * (690 - 728.9) + (477.4 + 466.8) * (728.9 - 749.7) + (466.8 + 461.4) * (749.7 - 747) + (461.4 + 390.7) * (747 - 709.7) + (390.7 + 398.3) * (709.7 - 695.4) + (398.3 + 401) * (695.4 - 690)) * 0.5 * 0.00694$
LOW CEILING (Non-living area)	10	$-((230.1 + 294.6) * (603 - 635.8) + (294.6 + 291.9) * (635.8 - 641.2) + (291.9 + 285.4) * (641.2 - 655.1) + (285.4 + 226.1) * (655.1 - 624.6) + (226.1 + 232.8) * (624.6 - 611) + (232.8 + 227.4) * (611 - 608.3) + (227.4 + 230.1) * (608.3 - 603)) * 0.5 * 0.00694$
LOW CEILING (Non-living area)	143	$-(929.1 + 929.1) * (366.1 - 405.4) + (929.1 + 403) * (405.4 - 405.4) + (403 + 403) * (405.4 - 366.1) + (403 + 929.1) * (366.1 - 366.1) * 0.5 * 0.00694$
LOW CEILING (Non-living area)	19	$-((1242.3 + 1242.3) * (305.9 - 338.6) + (1242.3 + 1160.5) * (338.6 - 338.6) + (1160.5 + 1160.5) * (338.6 - 305.9) + (1160.5 + 1242.3) * (305.9 - 305.9)) * 0.5 * 0.00694$
LOW CEILING (Non-living area)	144	$-((923.1 + 923.1) * (201.5 - 241.3) + (923.1 + 403) * (241.3 - 241.3) + (403 + 403) * (241.3 - 201.5) + (403 + 923.1) * (201.5 - 201.5)) * 0.5 * 0.00694$
LOW CEILING (Non-living area)	12	$-((1322.4 + 1322.4) * (93.8 - 130.8) + (1322.4 + 1276.4) * (130.8 - 130.8) + (1276.4 + 1276.4) * (130.8 - 99.8) + (1276.4 + 1282.4) * (99.8 - 99.8) + (1282.4 + 1282.4) * (99.8 - 93.8) + (1282.4 + 1322.4) * (93.8 - 93.8)) * 0.5 * 0.00694$
LOW CEILING (Non-living area)	9	$-(952.4 + 952.4) * (93.8 - 99.8) + (952.4 + 958.4) * (99.8 - 99.8) + (958.4 + 958.4) * (99.8 - 130.5) + (958.4 + 921) * (130.5 - 130.5) + (921 + 921) * (130.5 - 93.8) + (921 + 952.4) * (93.8 - 93.8) * 0.5 * 0.00694$
UNFINISHED ATTIC (Non-living area)	452	$-((923.1 + 923.1) * (241.3 - 332.6) + (923.1 + 929.1) * (332.6 - 332.6) + (929.1 + 929.1) * (332.6 - 366.1) + (929.1 + 403) * (366.1 - 366.1) + (403 + 403) * (366.1 - 241.3) + (403 + 923.1) * (241.3 - 241.3)) * 0.5 * 0.00694$