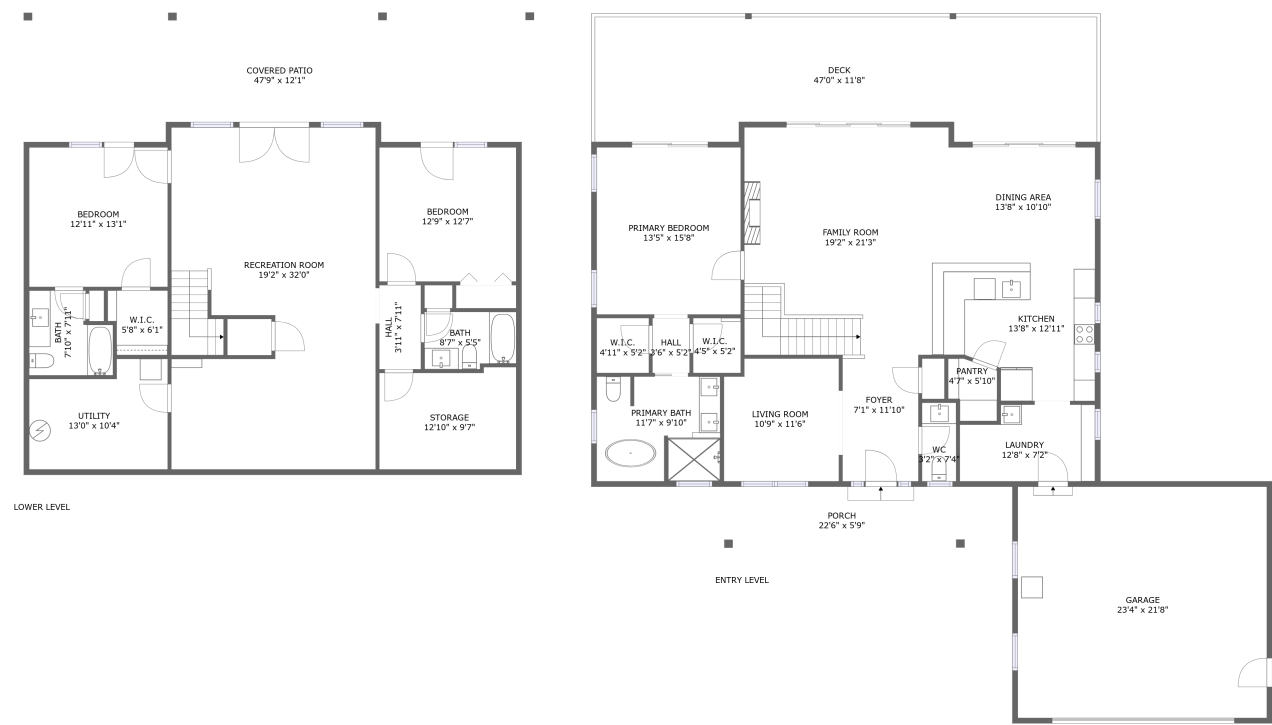


Home report

7012 Horseshoe Bend Road, Goodview, Bedford County,
Virginia, United States, 24095



Total Area: 2667 sq. ft
Floor 1: 1173 sq. ft, Floor 2: 1494 sq. ft
Excluded: Storage 118 sq. ft, Utility 119 sq. ft, Covered patio 542 sq. ft, Garage 505 sq. ft,
Deck 512 sq. ft, Porch 129 sq. ft, Walls: 201 sq. ft

Property summary

 **2** Floors

 **3** Bedrooms

 **3** Bathrooms

Home report

**7012 Horseshoe Bend Road, Goodview, Bedford County,
Virginia, United States, 24095**



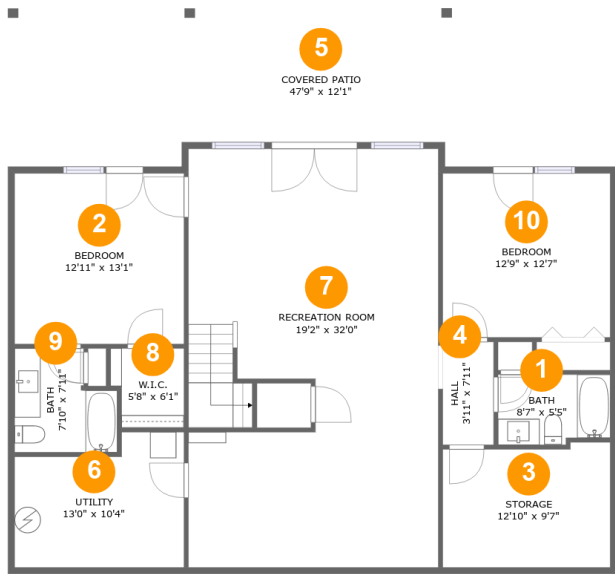
1
Half baths



1
Garages

Home report

7012 Horseshoe Bend Road, Goodview, Bedford County,
Virginia, United States, 24095



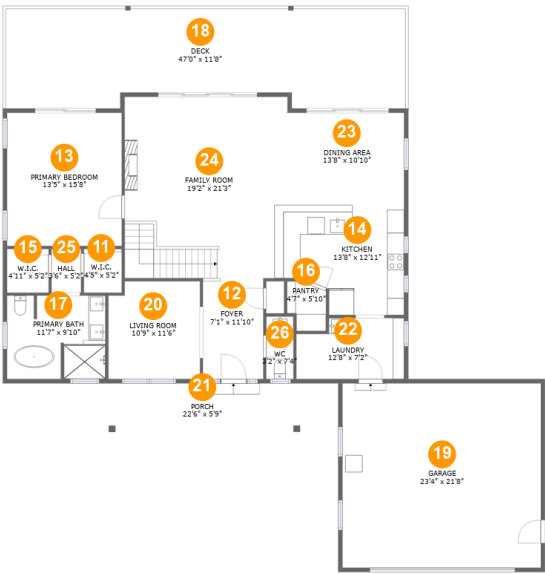
Room dimensions

Floor 1 Total:1173sqft Excluded: 779sqft

#		Max Dimensions	sqft	Included
1	Bath	8'7" x 5'5"	44 sq. ft	Yes
2	Bedroom	12'11" x 13'1"	169 sq. ft	Yes
3	Storage	12'10" x 9'7"	118 sq. ft	No
4	Hall	3'11" x 7'11"	31 sq. ft	Yes
5	Covered Patio	47'9" x 12'1"	542 sq. ft	No
6	Utility	13'0" x 10'4"	119 sq. ft	No
7	Recreation Room	19'2" x 32'0"	590 sq. ft	Yes
8	W.I.C.	5'8" x 6'1"	31 sq. ft	Yes
9	Bath	7'10" x 7'11"	54 sq. ft	Yes
10	Bedroom	12'9" x 12'7"	161 sq. ft	Yes

Home report

7012 Horseshoe Bend Road, Goodview, Bedford County,
Virginia, United States, 24095



Room dimensions

Floor 2 Total:1494sqft Excluded: 1146sqft

#		Max Dimensions	sqft	Included
11	W.I.C.	4'5" x 5'2"	23 sq. ft	Yes
12	Foyer	7'1" x 11'10"	84 sq. ft	Yes
13	Primary Bedroom	13'5" x 15'8"	211 sq. ft	Yes
14	Kitchen	13'8" x 12'11"	158 sq. ft	Yes
15	W.I.C.	4'11" x 5'2"	25 sq. ft	Yes
16	Pantry	4'7" x 5'10"	23 sq. ft	Yes
17	Primary Bath	11'7" x 9'10"	111 sq. ft	Yes
18	Deck	47'0" x 11'8"	512 sq. ft	No
19	Garage	23'4" x 21'8"	505 sq. ft	No
20	Living Room	10'9" x 11'6"	120 sq. ft	Yes
21	Porch	22'6" x 5'9"	129 sq. ft	No

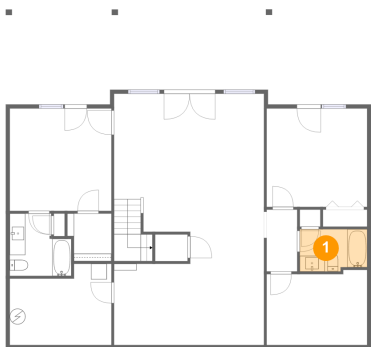
Home report

**7012 Horseshoe Bend Road, Goodview, Bedford County,
Virginia, United States, 24095**

#		Max Dimensions	sqft	Included
22	Laundry	12'8" x 7'2"	84 sq. ft	Yes
23	Dining Area	13'8" x 10'10"	148 sq. ft	Yes
24	Family Room	19'2" x 21'3"	408 sq. ft	Yes
25	Hall	3'6" x 5'2"	18 sq. ft	Yes
26	WC	3'2" x 7'4"	24 sq. ft	Yes

7012 Horseshoe Bend Road, Goodview, Bedford County,
Virginia, United States, 24095

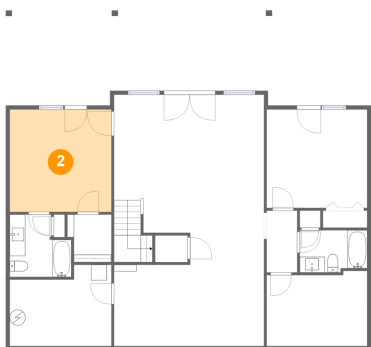
1 Floor 1 - Bath



Max Dimensions: 8'7" x 5'5"
Calculated Area: 44 sq. ft
Included: Yes

Heated: Yes
Finished: Yes
Enclosed: Yes
Contiguous: Yes
Permitted: Yes
Wet space: Yes
Addition: No
Conversion: No

2 Floor 1 - Bedroom

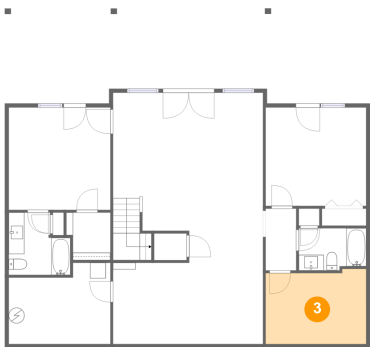


Max Dimensions: 12'11" x 13'1"
Calculated Area: 169 sq. ft
Included: Yes

Heated: Yes
Finished: Yes
Enclosed: Yes
Contiguous: Yes
Permitted: Yes
Wet space: No
Addition: No
Conversion: No

7012 Horseshoe Bend Road, Goodview, Bedford County,
Virginia, United States, 24095

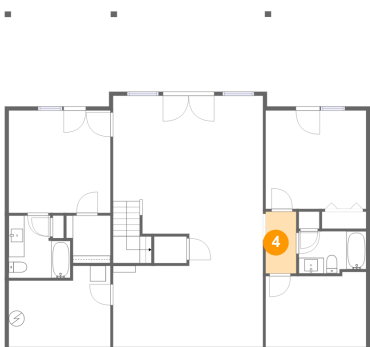
3 Floor 1 - Storage



Max Dimensions: 12'10" x 9'7"
Calculated Area: 118 sq. ft
Included: No

Heated: No
Finished: No
Enclosed: No
Contiguous: No
Permitted: Yes
Wet space: No
Addition: No
Conversion: No

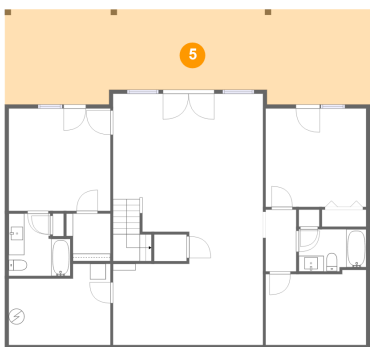
4 Floor 1 - Hall



Max Dimensions: 3'11" x 7'11"
Calculated Area: 31 sq. ft
Included: Yes

Heated: Yes
Finished: Yes
Enclosed: Yes
Contiguous: Yes
Permitted: Yes
Wet space: No
Addition: No
Conversion: No

5 Floor 1 - Covered Patio

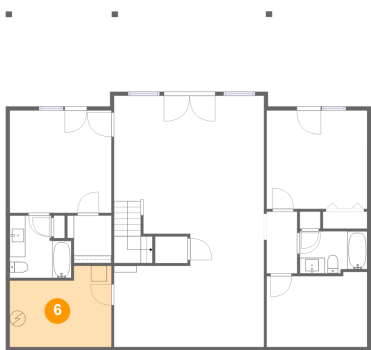


Max Dimensions: 47'9" x 12'1"
Calculated Area: 542 sq. ft
Included: No

Heated: No
Finished: Yes
Enclosed: No
Contiguous: Yes
Permitted: Yes
Wet space: No
Addition: No
Conversion: No

7012 Horseshoe Bend Road, Goodview, Bedford County,
Virginia, United States, 24095

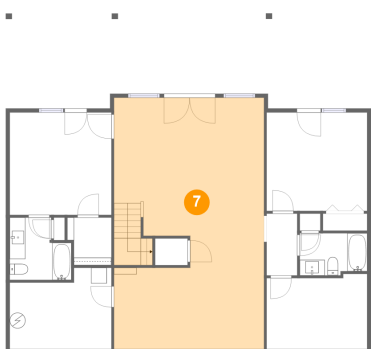
6 Floor 1 - Utility



Max Dimensions: 13'0" x 10'4"
Calculated Area: 119 sq. ft
Included: No

Heated: Yes
Finished: No
Enclosed: Yes
Contiguous: Yes
Permitted: Yes
Wet space: No
Addition: No
Conversion: No

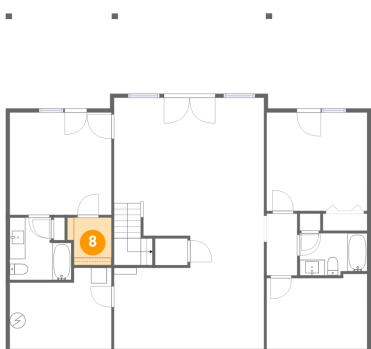
7 Floor 1 - Recreation Room



Max Dimensions: 19'2" x 32'0"
Calculated Area: 590 sq. ft
Included: Yes

Heated: Yes
Finished: Yes
Enclosed: Yes
Contiguous: Yes
Permitted: Yes
Wet space: No
Addition: No
Conversion: No

8 Floor 1 - W.I.C.

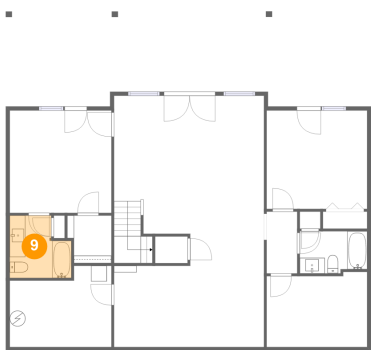


Max Dimensions: 5'8" x 6'1"
Calculated Area: 31 sq. ft
Included: Yes

Heated: Yes
Finished: Yes
Enclosed: Yes
Contiguous: Yes
Permitted: Yes
Wet space: No
Addition: No
Conversion: No

7012 Horseshoe Bend Road, Goodview, Bedford County,
Virginia, United States, 24095

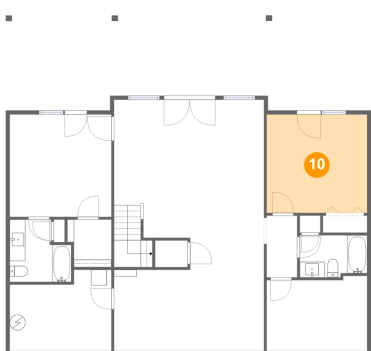
9 Floor 1 - Bath



Max Dimensions: 7'10" x 7'11"
Calculated Area: 54 sq. ft
Included: Yes

Heated: Yes
Finished: Yes
Enclosed: Yes
Contiguous: Yes
Permitted: Yes
Wet space: Yes
Addition: No
Conversion: No

10 Floor 1 - Bedroom



Max Dimensions: 12'9" x 12'7"
Calculated Area: 161 sq. ft
Included: Yes

Heated: Yes
Finished: Yes
Enclosed: Yes
Contiguous: Yes
Permitted: Yes
Wet space: No
Addition: No
Conversion: No

11 Floor 2 - W.I.C.



Max Dimensions: 4'5" x 5'2"
Calculated Area: 23 sq. ft
Included: Yes

Heated: Yes
Finished: Yes
Enclosed: Yes
Contiguous: Yes
Permitted: Yes
Wet space: No
Addition: No
Conversion: No

7012 Horseshoe Bend Road, Goodview, Bedford County,
Virginia, United States, 24095

12 Floor 2 - Foyer



Max Dimensions: 7'1" x
11'10"
Calculated Area: 84 sq. ft
Included: Yes

Heated: Yes
Finished: Yes
Enclosed: Yes
Contiguous:
Yes
Permitted: Yes
Wet space: No
Addition: No
Conversion: No

13 Floor 2 - Primary Bedroom



Max Dimensions: 13'5" x
15'8"
Calculated Area: 211 sq. ft
Included: Yes

Heated: Yes
Finished: Yes
Enclosed: Yes
Contiguous:
Yes
Permitted: Yes
Wet space: No
Addition: No
Conversion: No

14 Floor 2 - Kitchen

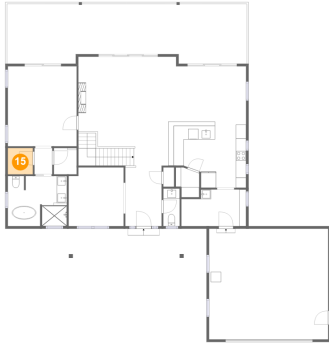


Max Dimensions: 13'8" x
12'11"
Calculated Area: 158 sq. ft
Included: Yes

Heated: Yes
Finished: Yes
Enclosed: Yes
Contiguous:
Yes
Permitted: Yes
Wet space: No
Addition: No
Conversion: No

7012 Horseshoe Bend Road, Goodview, Bedford County,
Virginia, United States, 24095

15 Floor 2 - W.I.C.



Max Dimensions: 4'11" x 5'2"
Calculated Area: 25 sq. ft
Included: Yes

Heated: Yes
Finished: Yes
Enclosed: Yes
Contiguous: Yes
Permitted: Yes
Wet space: No
Addition: No
Conversion: No

16 Floor 2 - Pantry



Max Dimensions: 4'7" x 5'10"
Calculated Area: 23 sq. ft
Included: Yes

Heated: Yes
Finished: Yes
Enclosed: Yes
Contiguous: Yes
Permitted: Yes
Wet space: No
Addition: No
Conversion: No

17 Floor 2 - Primary Bath



Max Dimensions: 11'7" x 9'10"
Calculated Area: 111 sq. ft
Included: Yes

Heated: Yes
Finished: Yes
Enclosed: Yes
Contiguous: Yes
Permitted: Yes
Wet space: Yes
Addition: No
Conversion: No

7012 Horseshoe Bend Road, Goodview, Bedford County,
Virginia, United States, 24095

18 Floor 2 - Deck



Max Dimensions: 47'0" x 11'8"
Calculated Area: 512 sq. ft
Included: No

Heated: No
Finished: Yes
Enclosed: No
Contiguous: No
Permitted: Yes
Wet space: No
Addition: No
Conversion: No

19 Floor 2 - Garage



Max Dimensions: 23'4" x 21'8"
Calculated Area: 505 sq. ft
Included: No

Heated: No
Finished: No
Enclosed: Yes
Contiguous: Yes
Permitted: Yes
Wet space: No
Addition: No
Conversion: No

20 Floor 2 - Living Room



Max Dimensions: 10'9" x 11'6"
Calculated Area: 120 sq. ft
Included: Yes

Heated: Yes
Finished: Yes
Enclosed: Yes
Contiguous: Yes
Permitted: Yes
Wet space: No
Addition: No
Conversion: No

7012 Horseshoe Bend Road, Goodview, Bedford County,
Virginia, United States, 24095

21 Floor 2 - Porch



Max Dimensions: 22'6" x 5'9"
Calculated Area: 129 sq. ft
Included: No

Heated: No
Finished: Yes
Enclosed: No
Contiguous: Yes
Permitted: Yes
Wet space: No
Addition: No
Conversion: No

22 Floor 2 - Laundry



Max Dimensions: 12'8" x 7'2"
Calculated Area: 84 sq. ft
Included: Yes

Heated: Yes
Finished: Yes
Enclosed: Yes
Contiguous: Yes
Permitted: Yes
Wet space: No
Addition: No
Conversion: No

23 Floor 2 - Dining Area

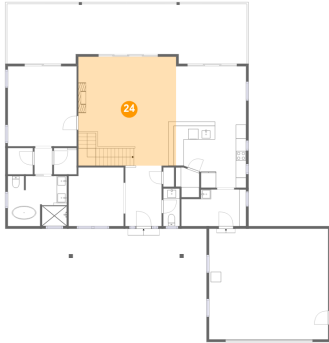


Max Dimensions: 13'8" x 10'10"
Calculated Area: 148 sq. ft
Included: Yes

Heated: Yes
Finished: Yes
Enclosed: Yes
Contiguous: Yes
Permitted: Yes
Wet space: No
Addition: No
Conversion: No

7012 Horseshoe Bend Road, Goodview, Bedford County,
Virginia, United States, 24095

24 Floor 2 - Family Room



Max Dimensions: 19'2" x 21'3"
Calculated Area: 408 sq. ft
Included: Yes

Heated: Yes
Finished: Yes
Enclosed: Yes
Contiguous: Yes
Permitted: Yes
Wet space: No
Addition: No
Conversion: No

25 Floor 2 - Hall



Max Dimensions: 3'6" x 5'2"
Calculated Area: 18 sq. ft
Included: Yes

Heated: Yes
Finished: Yes
Enclosed: Yes
Contiguous: Yes
Permitted: Yes
Wet space: No
Addition: No
Conversion: No

26 Floor 2 - WC



Max Dimensions: 3'2" x 7'4"
Calculated Area: 24 sq. ft
Included: Yes

Heated: Yes
Finished: Yes
Enclosed: Yes
Contiguous: Yes
Permitted: Yes
Wet space: Yes
Addition: No
Conversion: No