

Total Area: 1667 sq. ft

Floor 1: 1667 sq. ft

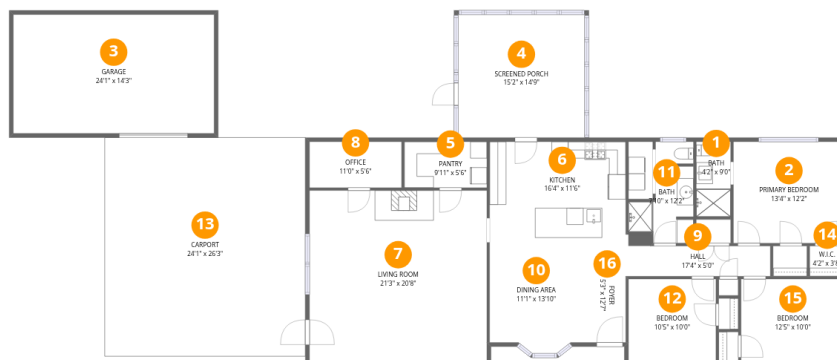
Excluded: Carport 632 sq. ft, Screened porch 224 sq. ft, Garage 343 sq. ft, Walls: 156 sq. ft

Property summary



Home data report

6076 Highland Dr, Kaufman, TX, US



Room dimensions

Floor 1

Total: 1667sqft Excluded: 1199sqft

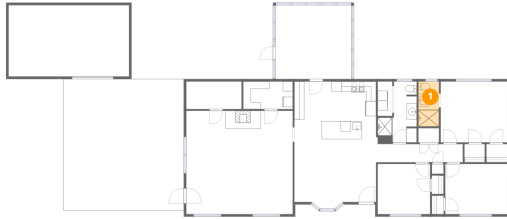
| # | | Dimensions | sqft | Counted as living area |
|----|-----------------|----------------|------------|------------------------|
| 1 | Bath | 4'2" x 9'0" | 37 sq. ft | Yes |
| 2 | Primary Bedroom | 13'4" x 12'2" | 162 sq. ft | Yes |
| 3 | Garage | 24'1" x 14'3" | 343 sq. ft | No |
| 4 | Screened Porch | 15'2" x 14'9" | 224 sq. ft | No |
| 5 | Pantry | 9'11" x 5'6" | 55 sq. ft | Yes |
| 6 | Kitchen | 16'4" x 11'6" | 188 sq. ft | Yes |
| 7 | Living Room | 21'3" x 20'8" | 440 sq. ft | Yes |
| 8 | Office | 11'0" x 5'6" | 61 sq. ft | Yes |
| 9 | Hall | 17'4" x 5'0" | 67 sq. ft | Yes |
| 10 | Dining Area | 11'1" x 13'10" | 146 sq. ft | Yes |
| 11 | Bath | 7'10" x 12'2" | 66 sq. ft | Yes |



| # | | Dimensions | sqft | Counted as living area |
|----|---------|---------------|------------|------------------------|
| 12 | Bedroom | 10'5" x 10'0" | 105 sq. ft | Yes |
| 13 | Carport | 24'1" x 26'3" | 632 sq. ft | No |
| 14 | W.I.C. | 4'2" x 3'8" | 15 sq. ft | Yes |
| 15 | Bedroom | 12'5" x 10'0" | 125 sq. ft | Yes |
| 16 | Foyer | 5'3" x 12'7" | 66 sq. ft | Yes |



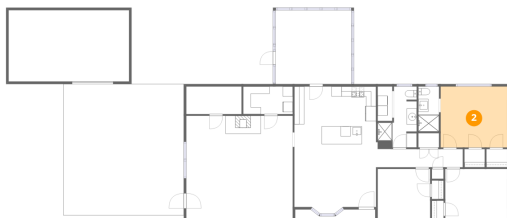
1 Floor 1 - Bath



Dimensions: 4'2" x 9'0"
Area: 37 sq. ft
Counted as living area: Yes

Heated: Yes
Finished: Yes
Enclosed: Yes
Contiguous: Yes
Permitted: Yes
Wet space: Yes
Addition: No
Conversion: No

2 Floor 1 - Primary Bedroom

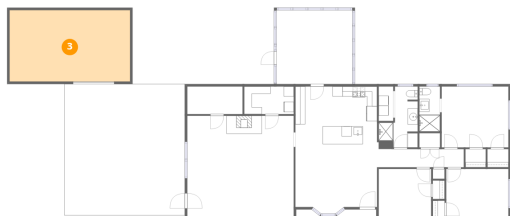


Dimensions: 13'4" x 12'2"
Area: 162 sq. ft
Counted as living area: Yes

Heated: Yes
Finished: Yes
Enclosed: Yes
Contiguous: Yes
Permitted: Yes
Wet space: No
Addition: No
Conversion: No



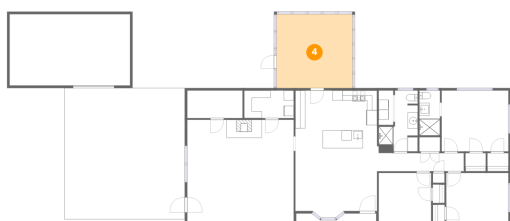
3 Floor 1 - Garage



Dimensions: 24'1" x 14'3"
Area: 343 sq. ft
Counted as living area: No

Heated: No
Finished: No
Enclosed: Yes
Contiguous: Yes
Permitted: Yes
Wet space: No
Addition: No
Conversion: No

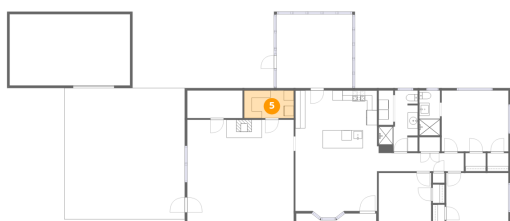
4 Floor 1 - Screened Porch



Dimensions: 15'2" x 14'9"
Area: 224 sq. ft
Counted as living area: No

Heated: No
Finished: No
Enclosed: No
Contiguous: Yes
Permitted: Yes
Wet space: No
Addition: No
Conversion: No

5 Floor 1 - Pantry



Dimensions: 9'11" x 5'6"
Area: 55 sq. ft
Counted as living area: Yes

Heated: Yes
Finished: Yes
Enclosed: Yes
Contiguous: Yes
Permitted: Yes
Wet space: No
Addition: No
Conversion: No



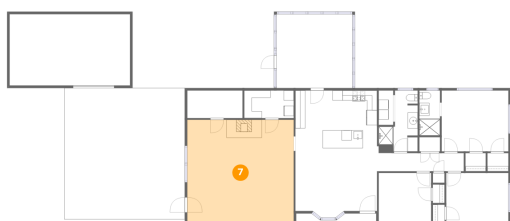
6 Floor 1 - Kitchen



Dimensions: 16'4" x 11'6"
Area: 188 sq. ft
Counted as living area: Yes

Heated: Yes
Finished: Yes
Enclosed: Yes
Contiguous: Yes
Permitted: Yes
Wet space: No
Addition: No
Conversion: No

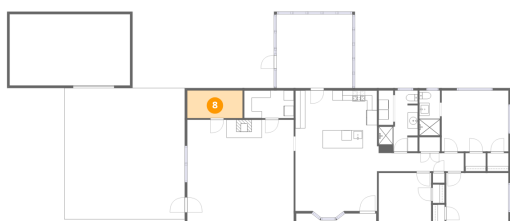
7 Floor 1 - Living Room



Dimensions: 21'3" x 20'8"
Area: 440 sq. ft
Counted as living area: Yes

Heated: Yes
Finished: Yes
Enclosed: Yes
Contiguous: Yes
Permitted: Yes
Wet space: No
Addition: No
Conversion: No

8 Floor 1 - Office

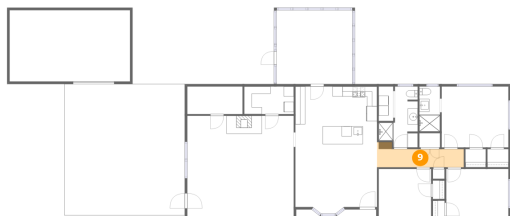


Dimensions: 11'0" x 5'6"
Area: 61 sq. ft
Counted as living area: Yes

Heated: Yes
Finished: Yes
Enclosed: Yes
Contiguous: Yes
Permitted: Yes
Wet space: No
Addition: No
Conversion: No



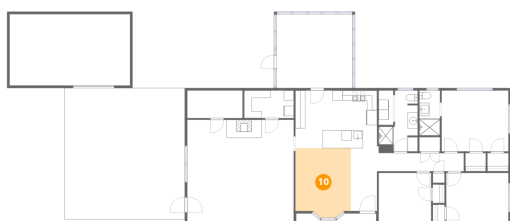
9 Floor 1 - Hall



Dimensions: 17'4" x 5'0"
Area: 67 sq. ft
Counted as living area: Yes

Heated: Yes
Finished: Yes
Enclosed: Yes
Contiguous: Yes
Permitted: Yes
Wet space: No
Addition: No
Conversion: No

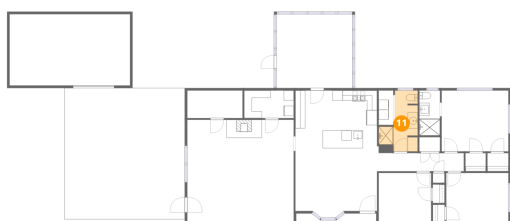
10 Floor 1 - Dining Area



Dimensions: 11'1" x 13'10"
Area: 146 sq. ft
Counted as living area: Yes

Heated: Yes
Finished: Yes
Enclosed: Yes
Contiguous: Yes
Permitted: Yes
Wet space: No
Addition: No
Conversion: No

11 Floor 1 - Bath

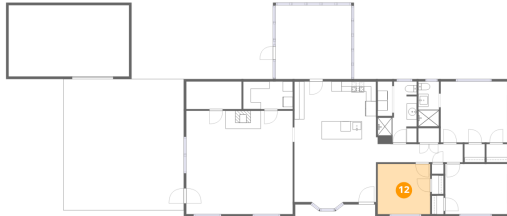


Dimensions: 7'10" x 12'2"
Area: 66 sq. ft
Counted as living area: Yes

Heated: Yes
Finished: Yes
Enclosed: Yes
Contiguous: Yes
Permitted: Yes
Wet space: Yes
Addition: No
Conversion: No



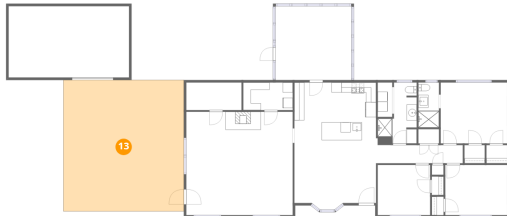
12 Floor 1 - Bedroom



Dimensions: 10'5" x 10'0"
Area: 105 sq. ft
Counted as living area: Yes

Heated: Yes
Finished: Yes
Enclosed: Yes
Contiguous: Yes
Permitted: Yes
Wet space: No
Addition: No
Conversion: No

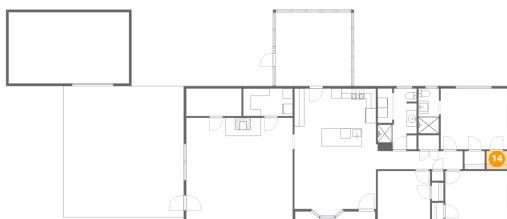
13 Floor 1 - Carport



Dimensions: 24'1" x 26'3"
Area: 632 sq. ft
Counted as living area: No

Heated: No
Finished: Yes
Enclosed: No
Contiguous: Yes
Permitted: Yes
Wet space: No
Addition: No
Conversion: No

14 Floor 1 - W.I.C.

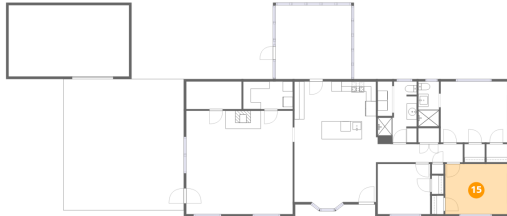


Dimensions: 4'2" x 3'8"
Area: 15 sq. ft
Counted as living area: Yes

Heated: Yes
Finished: Yes
Enclosed: Yes
Contiguous: Yes
Permitted: Yes
Wet space: No
Addition: No
Conversion: No



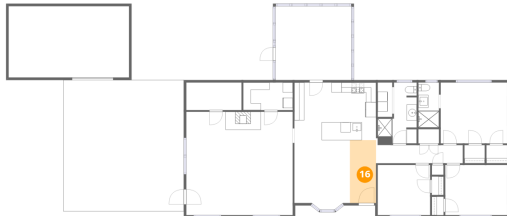
15 Floor 1 - Bedroom



Dimensions: 12'5" x 10'0"
Area: 125 sq. ft
Counted as living area: Yes

Heated: Yes
Finished: Yes
Enclosed: Yes
Contiguous: Yes
Permitted: Yes
Wet space: No
Addition: No
Conversion: No

16 Floor 1 - Foyer



Dimensions: 5'3" x 12'7"
Area: 66 sq. ft
Counted as living area: Yes

Heated: Yes
Finished: Yes
Enclosed: Yes
Contiguous: Yes
Permitted: Yes
Wet space: No
Addition: No
Conversion: No