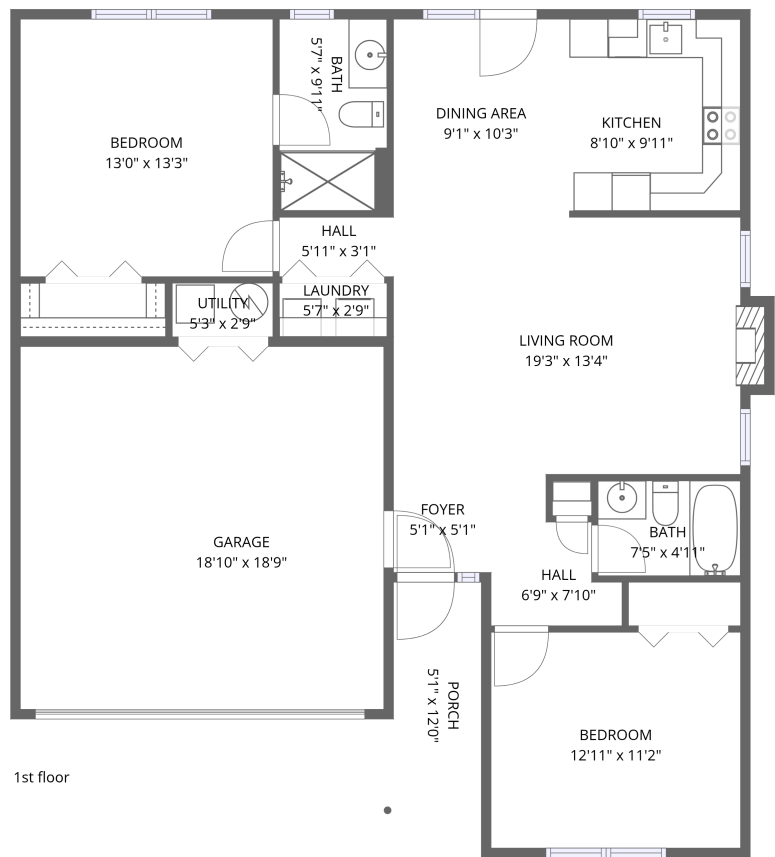


Home data report

776 Ripplebrook Dr,Culpeper,VA,US



Total Area: 1005 sq. ft

1st Floor: 1005 sq. ft


Excluded: Garage 354 sq. ft, Utility 14 sq. ft, Porch 57 sq. ft, Fireplace 6 sq. ft, Walls: 101 sq. ft

Property summary

 **1** Floors

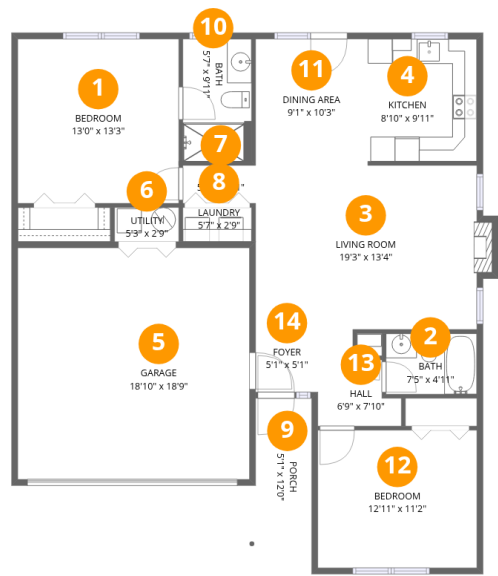
 **2** Bedrooms

 **2** Bathrooms

 **1** Garages

Home data report

776 Ripplebrook Dr,Culpeper,VA,US



Room dimensions

Floor 1 Total:1005sqft Excluded: 431sqft

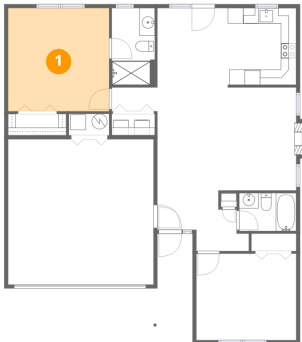
#		Dimensions	sqft	Counted as living area
1	Bedroom	13'0" x 13'3"	175 sq. ft	Yes
2	Bath	7'5" x 4'11"	36 sq. ft	Yes
3	Living Room	19'3" x 13'4"	244 sq. ft	Yes
4	Kitchen	8'10" x 9'11"	88 sq. ft	Yes
5	Garage	18'10" x 18'9"	354 sq. ft	No
6	Utility	5'3" x 2'9"	14 sq. ft	No
7	Hall	5'11" x 3'1"	18 sq. ft	Yes
8	Laundry	5'7" x 2'9"	16 sq. ft	Yes
9	Porch	5'1" x 12'0"	57 sq. ft	No
10	Bath	5'7" x 9'11"	55 sq. ft	Yes
11	Dining Area	9'1" x 10'3"	94 sq. ft	Yes

Home data report

776 Ripplebrook Dr,Culpeper,VA,US

#		Dimensions	sqft	Counted as living area
12	Bedroom	12'11" x 11'2"	144 sq. ft	Yes
13	Hall	6'9" x 7'10"	39 sq. ft	Yes
14	Foyer	5'1" x 5'1"	26 sq. ft	Yes

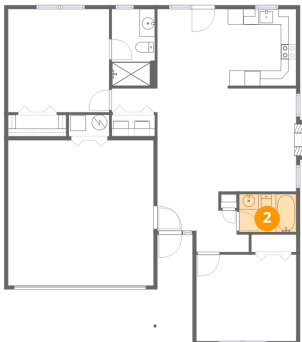
1 Floor 1 - Bedroom



Dimensions: 13'0" x 13'3"
Area: 175 sq. ft
Counted as living area: Yes

Heated: Yes
Finished: Yes
Enclosed: Yes
Contiguous: Yes
Permitted: Yes
Wet space: No
Addition: No
Conversion: No

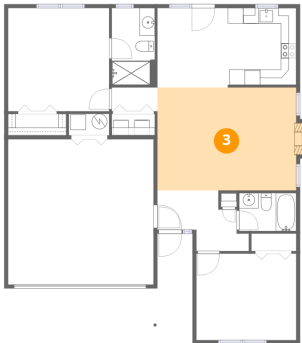
2 Floor 1 - Bath



Dimensions: 7'5" x 4'11"
Area: 36 sq. ft
Counted as living area: Yes

Heated: Yes
Finished: Yes
Enclosed: Yes
Contiguous: Yes
Permitted: Yes
Wet space: Yes
Addition: No
Conversion: No

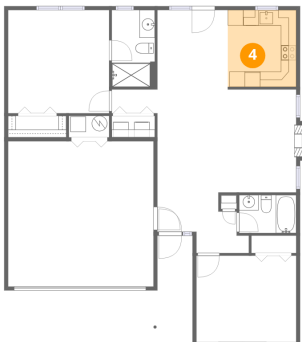
3 Floor 1 - Living Room



Dimensions: 19'3" x 13'4"
Area: 244 sq. ft
Counted as living area: Yes

Heated: Yes
Finished: Yes
Enclosed: Yes
Contiguous: Yes
Permitted: Yes
Wet space: No
Addition: No
Conversion: No

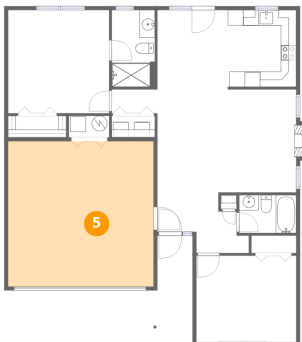
4 Floor 1 - Kitchen



Dimensions: 8'10" x 9'11"
Area: 88 sq. ft
Counted as living area: Yes

Heated: Yes
Finished: Yes
Enclosed: Yes
Contiguous: Yes
Permitted: Yes
Wet space: No
Addition: No
Conversion: No

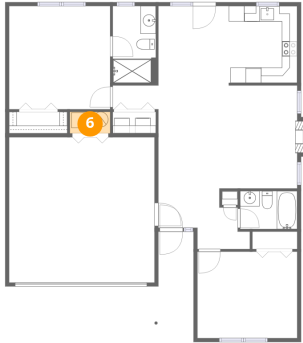
5 Floor 1 - Garage



Dimensions: 18'10" x 18'9"
Area: 354 sq. ft
Counted as living area: No

Heated: No
Finished: No
Enclosed: Yes
Contiguous: Yes
Permitted: Yes
Wet space: No
Addition: No
Conversion: No

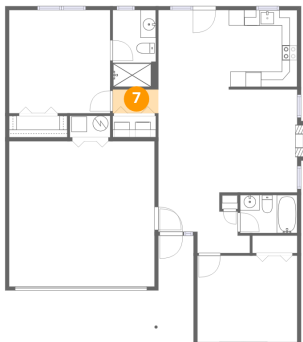
6 Floor 1 - Utility



Dimensions: 5'3" x 2'9"
Area: 14 sq. ft
Counted as living area: No

Heated: Yes
Finished: No
Enclosed: Yes
Contiguous: Yes
Permitted: Yes
Wet space: No
Addition: No
Conversion: No

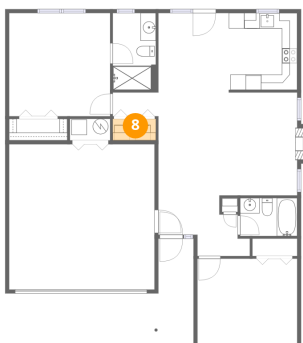
7 Floor 1 - Hall



Dimensions: 5'11" x 3'1"
Area: 18 sq. ft
Counted as living area: Yes

Heated: Yes
Finished: Yes
Enclosed: Yes
Contiguous: Yes
Permitted: Yes
Wet space: No
Addition: No
Conversion: No

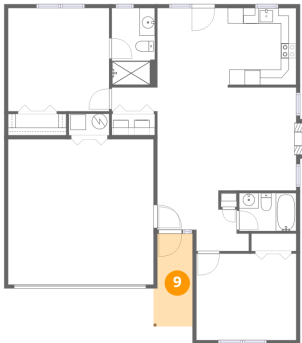
8 Floor 1 - Laundry



Dimensions: 5'7" x 2'9"
Area: 16 sq. ft
Counted as living area: Yes

Heated: Yes
Finished: Yes
Enclosed: Yes
Contiguous: Yes
Permitted: Yes
Wet space: No
Addition: No
Conversion: No

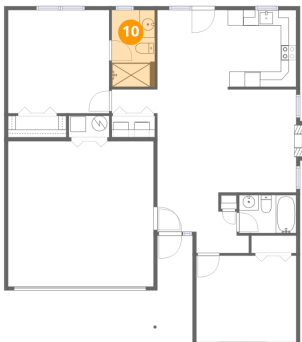
9 Floor 1 - Porch



Dimensions: 5'1" x 12'0"
Area: 57 sq. ft
Counted as living area: No

Heated: No
Finished: No
Enclosed: No
Contiguous: Yes
Permitted: Yes
Wet space: No
Addition: No
Conversion: No

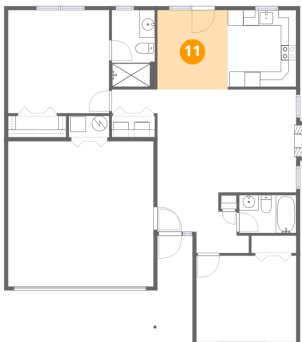
10 Floor 1 - Bath



Dimensions: 5'7" x 9'11"
Area: 55 sq. ft
Counted as living area: Yes

Heated: Yes
Finished: Yes
Enclosed: Yes
Contiguous: Yes
Permitted: Yes
Wet space: Yes
Addition: No
Conversion: No

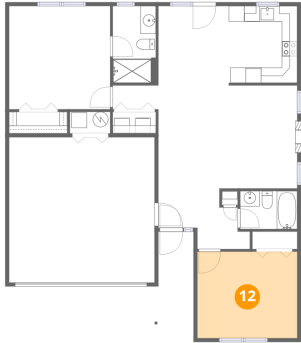
11 Floor 1 - Dining Area



Dimensions: 9'1" x 10'3"
Area: 94 sq. ft
Counted as living area: Yes

Heated: Yes
Finished: Yes
Enclosed: Yes
Contiguous: Yes
Permitted: Yes
Wet space: No
Addition: No
Conversion: No

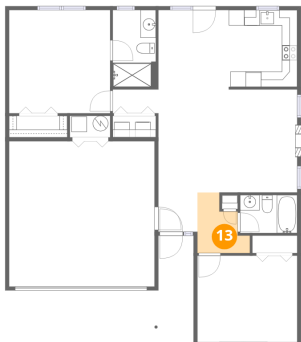
12 Floor 1 - Bedroom



Dimensions: 12'11" x 11'2"
Area: 144 sq. ft
Counted as living area: Yes

Heated: Yes
Finished: Yes
Enclosed: Yes
Contiguous: Yes
Permitted: Yes
Wet space: No
Addition: No
Conversion: No

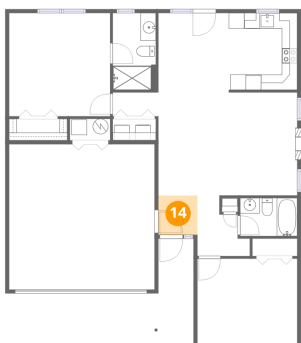
13 Floor 1 - Hall



Dimensions: 6'9" x 7'10"
Area: 39 sq. ft
Counted as living area: Yes

Heated: Yes
Finished: Yes
Enclosed: Yes
Contiguous: Yes
Permitted: Yes
Wet space: No
Addition: No
Conversion: No

14 Floor 1 - Foyer



Dimensions: 5'1" x 5'1"
Area: 26 sq. ft
Counted as living area: Yes

Heated: Yes
Finished: Yes
Enclosed: Yes
Contiguous: Yes
Permitted: Yes
Wet space: No
Addition: No
Conversion: No