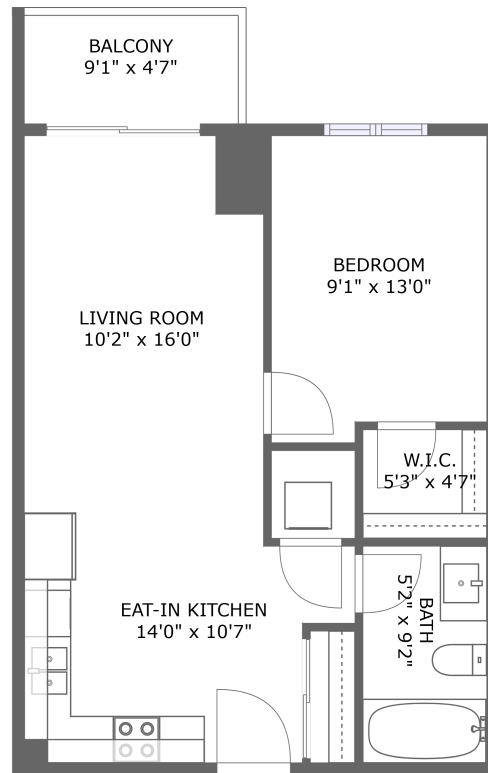


Home report

**2486 Old Bronte Road, Westmount, Palermo, Oakville, Halton County, Ontario, Canada, L6M 4J2, 819**



FLOOR 1

**Total Area: 523 sq. ft**

Floor 1: 523 sq. ft

Excluded: Balcony 42 sq. ft, Walls: 0 sq. ft

## Property summary

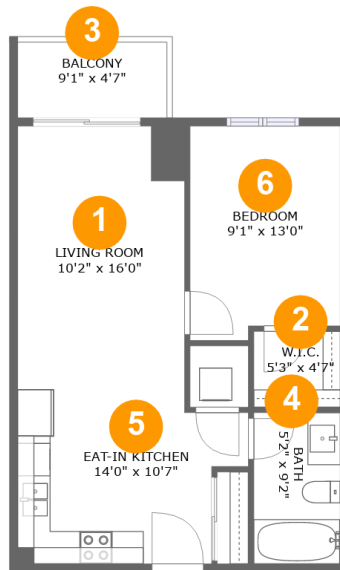
 **1** Floors

 **1** Bedrooms

 **1** Bathrooms

## Home report

2486 Old Bronte Road, Westmount, Palermo, Oakville, Halton County, Ontario, Canada, L6M 4J2, 819



## Room dimensions

Floor 1

Total:523sqft

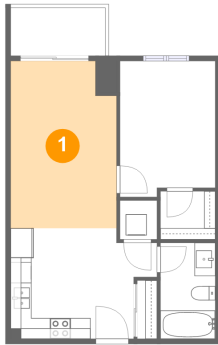
Excluded: 42sqft

#		Max Dimensions	sqft	Included
1	Living Room	10'2" x 16'0"	156 sq. ft	Yes
2	W.I.C.	5'3" x 4'7"	24 sq. ft	Yes
3	Balcony	9'1" x 4'7"	42 sq. ft	No
4	Bath	5'2" x 9'2"	48 sq. ft	Yes
5	Eat-in Kitchen	14'0" x 10'7"	130 sq. ft	Yes
6	Bedroom	9'1" x 13'0"	114 sq. ft	Yes

2486 Old Bronte Road, Westmount, Palermo, Oakville, Halton County, Ontario, Canada, L6M 4J2, 819

## 1 Floor 1 - Living Room

---

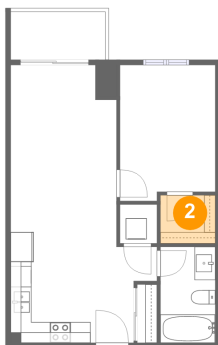


Max Dimensions: 10'2" x 16'0"  
Calculated Area: 156 sq. ft  
Included: Yes

Heated: Yes  
Finished: Yes  
Enclosed: Yes  
Contiguous: Yes  
Permitted: Yes  
Wet space: No  
Addition: No  
Conversion: No

## 2 Floor 1 - W.I.C.

---

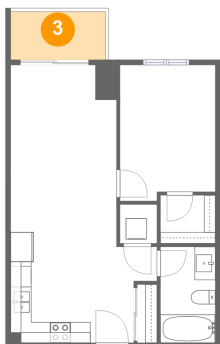


Max Dimensions: 5'3" x 4'7"  
Calculated Area: 24 sq. ft  
Included: Yes

Heated: Yes  
Finished: Yes  
Enclosed: Yes  
Contiguous: Yes  
Permitted: Yes  
Wet space: No  
Addition: No  
Conversion: No

2486 Old Bronte Road, Westmount, Palermo, Oakville, Halton County, Ontario, Canada, L6M 4J2, 819

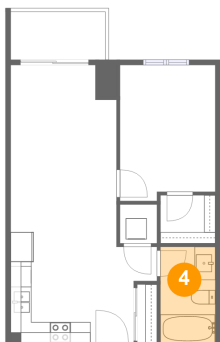
### 3 Floor 1 - Balcony



Max Dimensions: 9'1" x 4'7"  
Calculated Area: 42 sq. ft  
Included: No

Heated: No  
Finished: Yes  
Enclosed: No  
Contiguous: Yes  
Permitted: Yes  
Wet space: No  
Addition: No  
Conversion: No

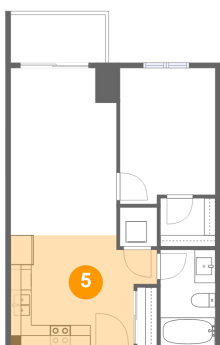
### 4 Floor 1 - Bath



Max Dimensions: 5'2" x 9'2"  
Calculated Area: 48 sq. ft  
Included: Yes

Heated: Yes  
Finished: Yes  
Enclosed: Yes  
Contiguous: Yes  
Permitted: Yes  
Wet space: Yes  
Addition: No  
Conversion: No

### 5 Floor 1 - Eat-in Kitchen



Max Dimensions: 14'0" x 10'7"  
Calculated Area: 130 sq. ft  
Included: Yes

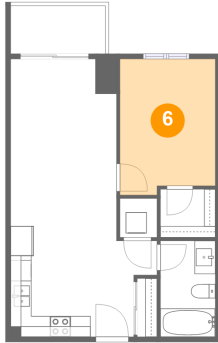
Heated: Yes  
Finished: Yes  
Enclosed: Yes  
Contiguous: Yes  
Permitted: Yes  
Wet space: No  
Addition: No  
Conversion: No

Home report

2486 Old Bronte Road, Westmount, Palermo, Oakville, Halton County, Ontario, Canada, L6M 4J2, 819

**6** Floor 1 - Bedroom

---



Max Dimensions: 9'1" x  
13'0"  
Calculated Area: 114 sq. ft  
Included: Yes

Heated: Yes  
Finished: Yes  
Enclosed: Yes  
Contiguous:  
Yes  
Permitted: Yes  
Wet space: No  
Addition: No  
Conversion: No